

Standard Drive Base



Scroll for
building
instructions



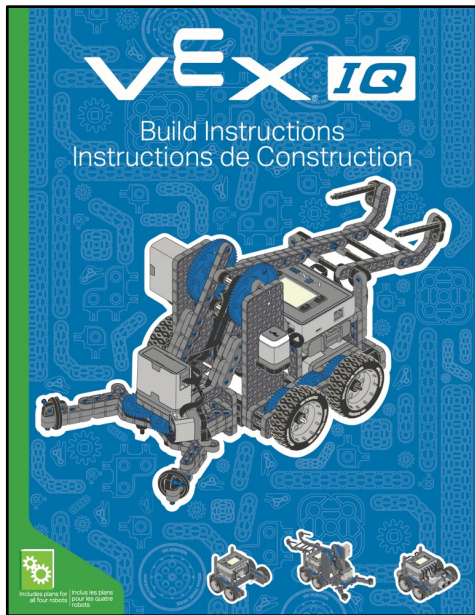




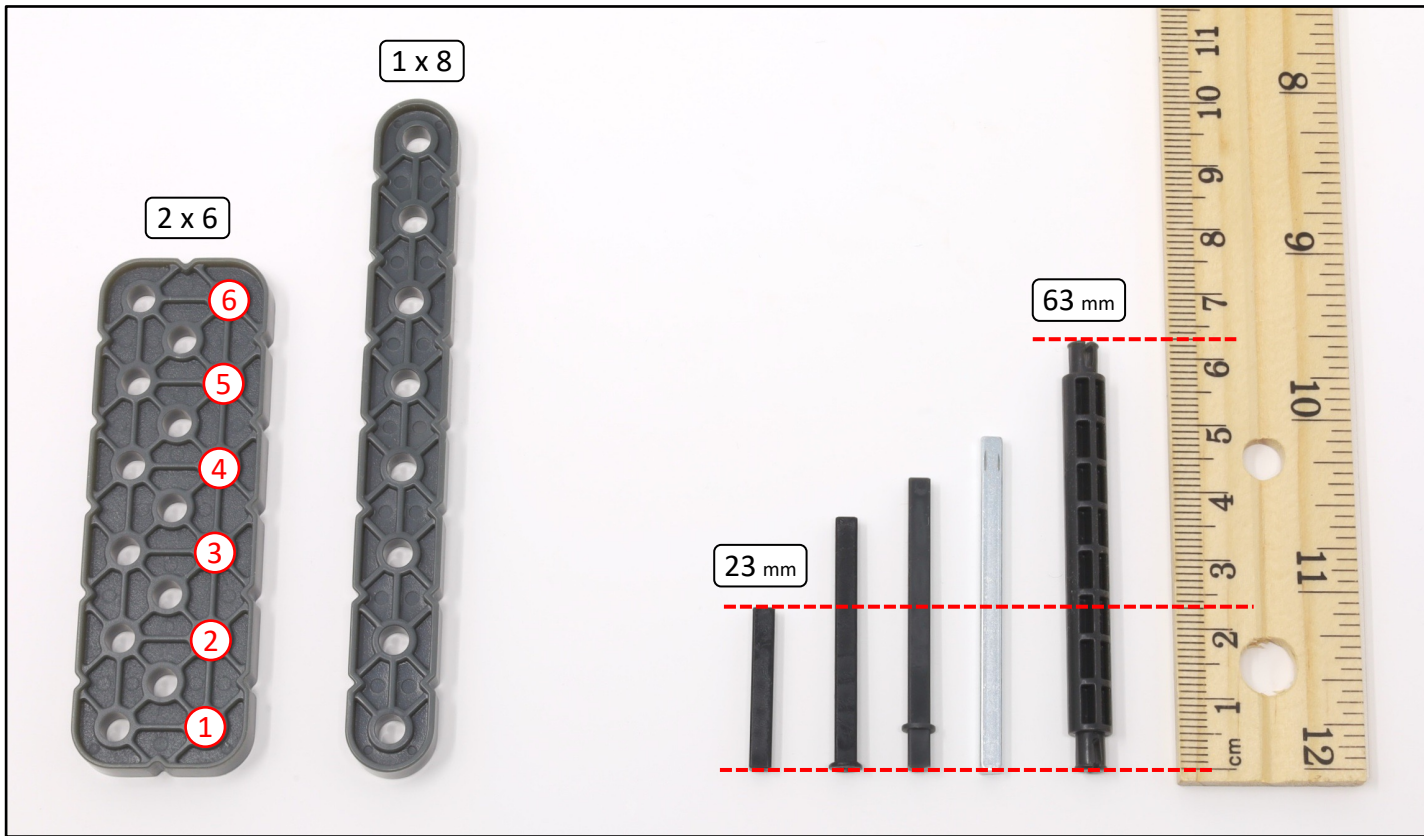


Table of Contents Table des Matières	
1 VEX IQ Build Tips Conseils d'Assemblage VEX IQ	3
2 Standard Drive Base Base Mobile Standard	4
 Build Steps Étapes de Construction	1-19
3 Clawbot IQ Clawbot IQ	20-28
3 Clawbot IQ with Sensors Clawbot IQ avec Capteurs	28
 Build Steps Étapes de Construction	20-87
3 Clawbot IQ with Sensors Clawbot IQ avec Capteurs	28
 Build Steps Étapes de Construction	88-101
4 Autopilot Instructions Instruction pour l'Autopilote	32
 Build Steps Étapes de Construction	102-117

(This model is the same design as the “Standard Drive Base” in the Vex IQ build instructions)

Parts Sizing Guide



Count holes on beams

Use a metric ruler for axles and standoffs



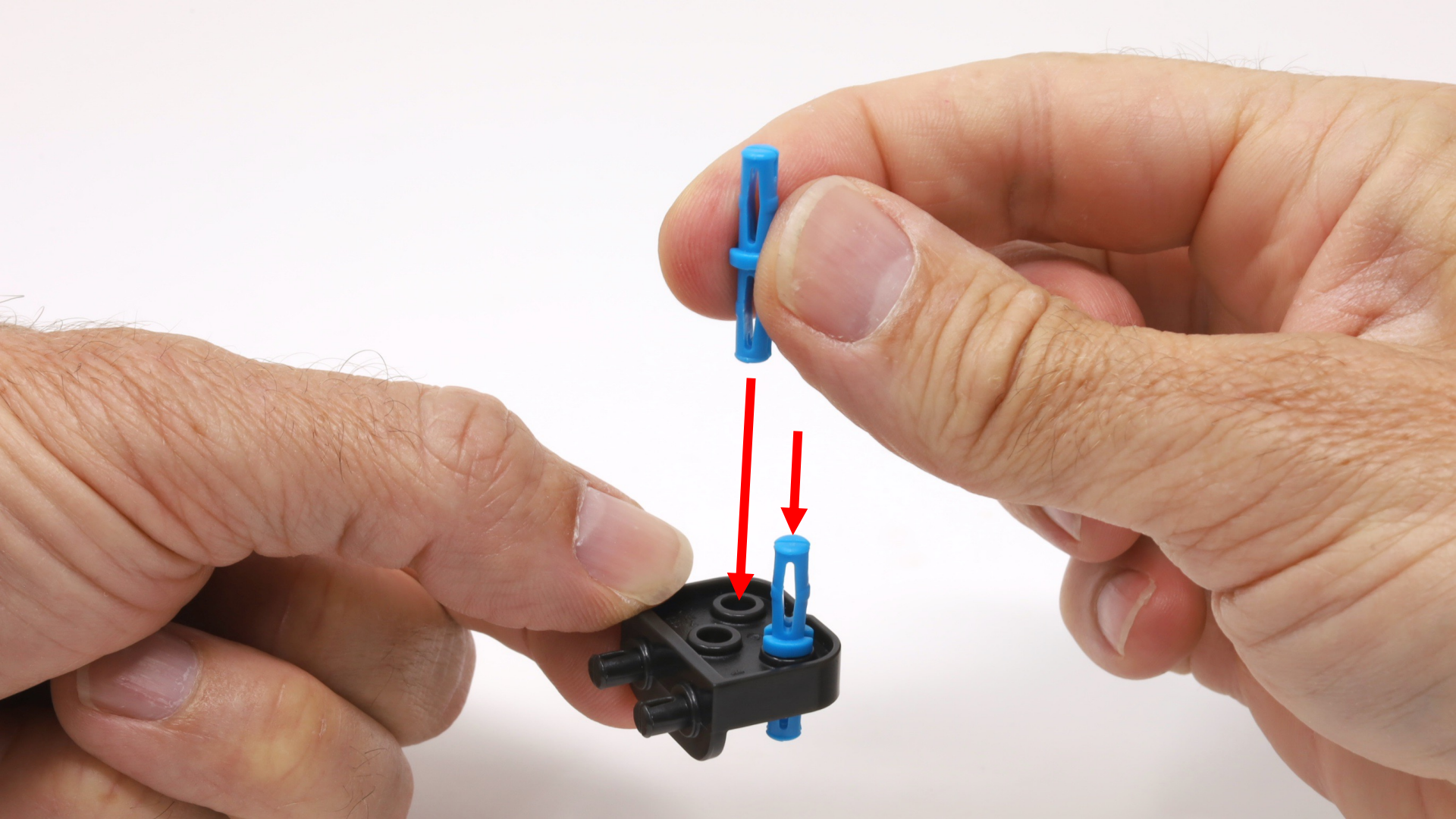
Watch orientation of connectors

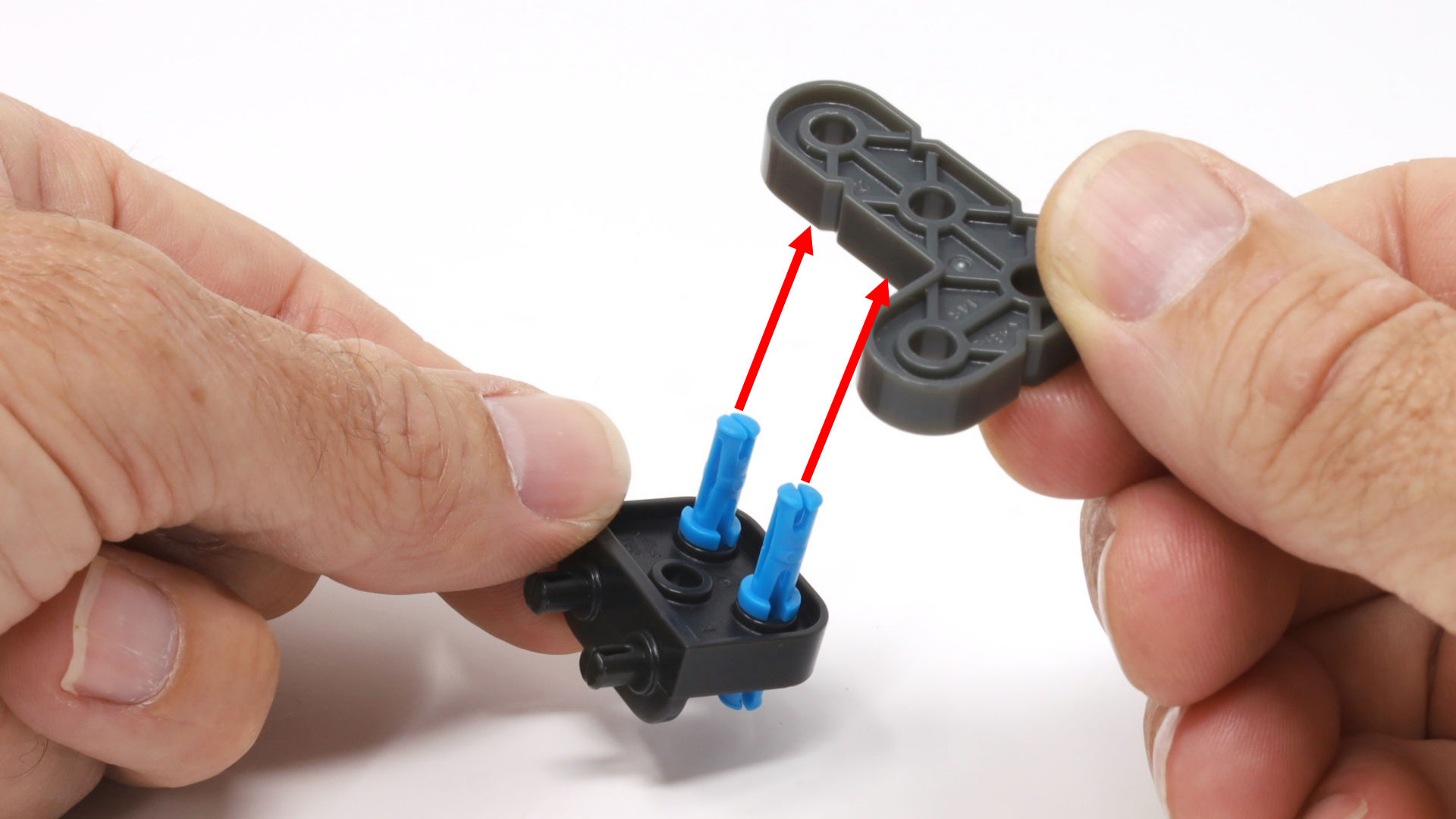


2 x 12

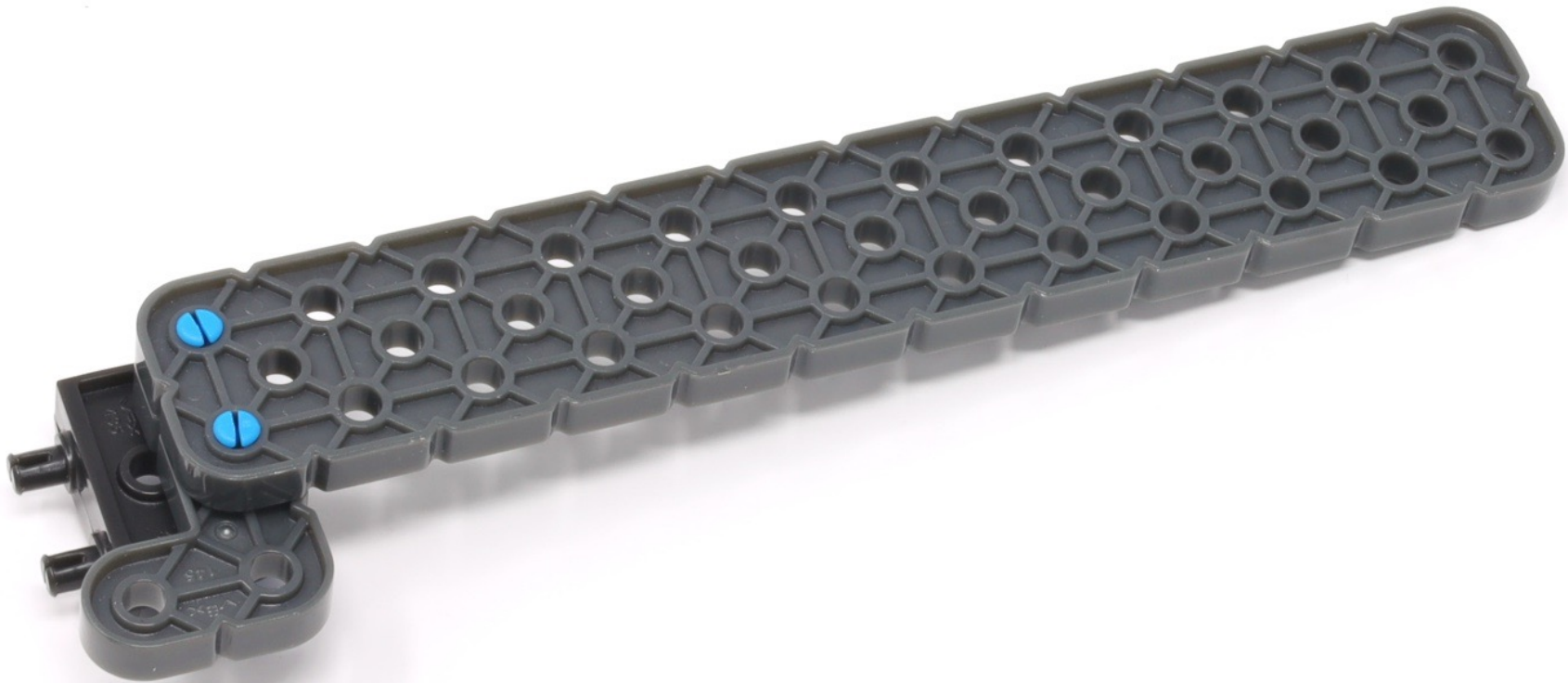


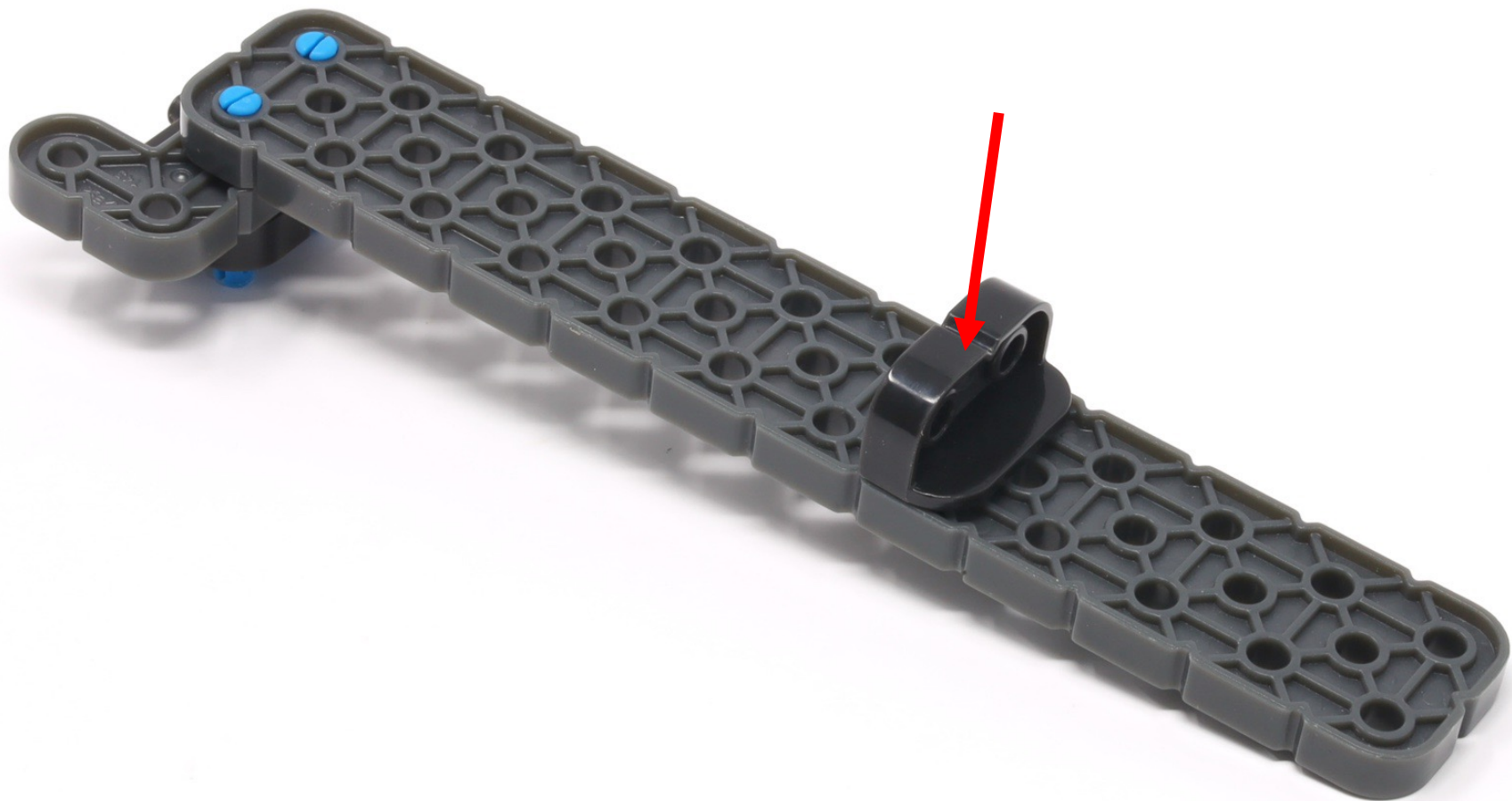
(4 thickness size)













48 mm



25 mm



25 mm



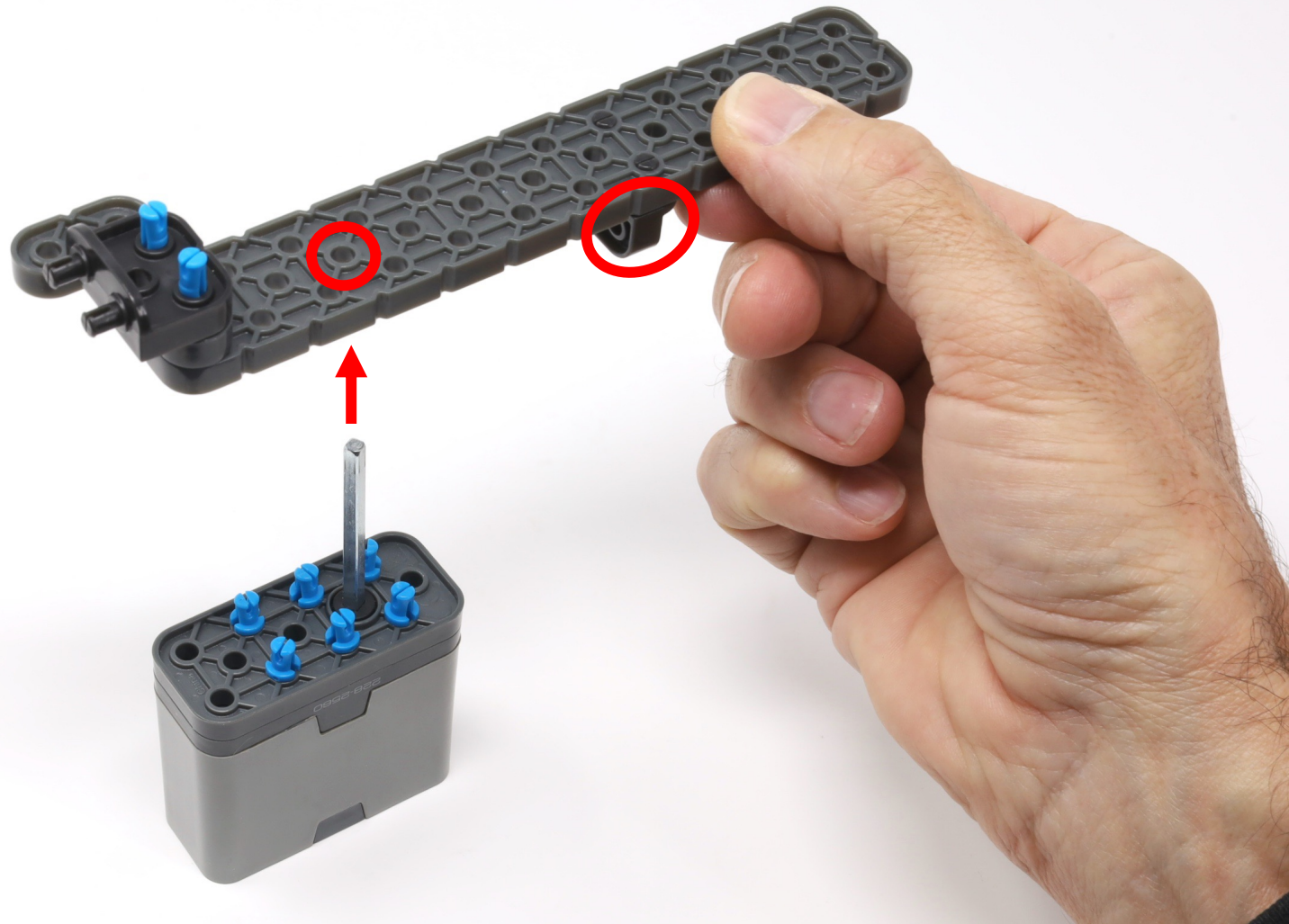
(6 x)



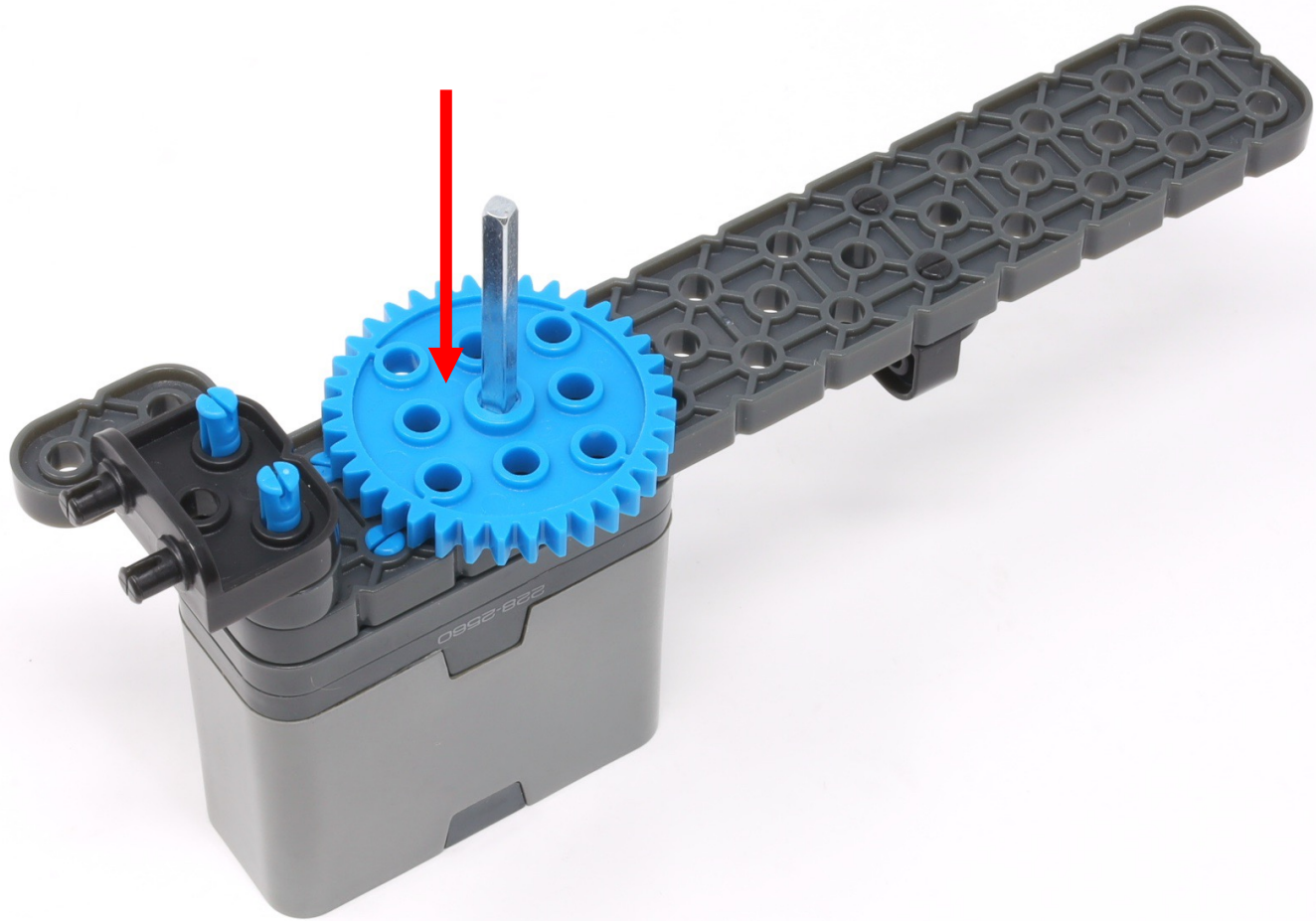


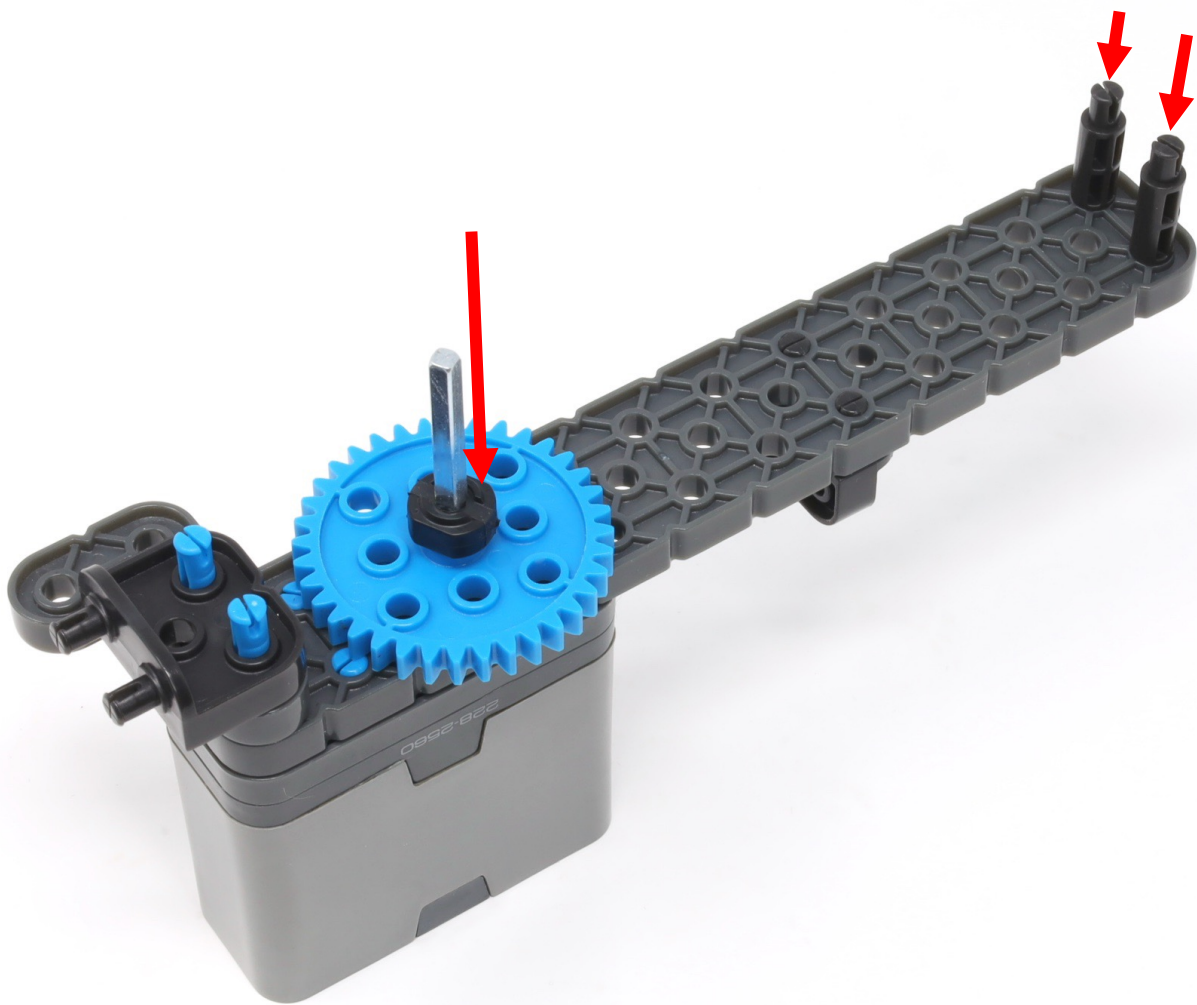
48 mm

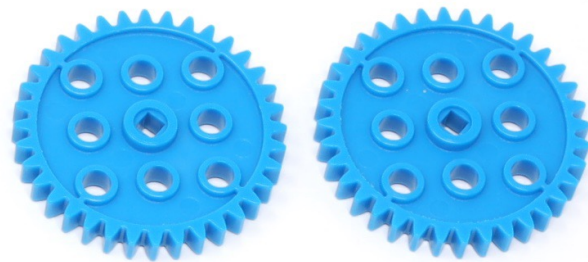












2 x 12

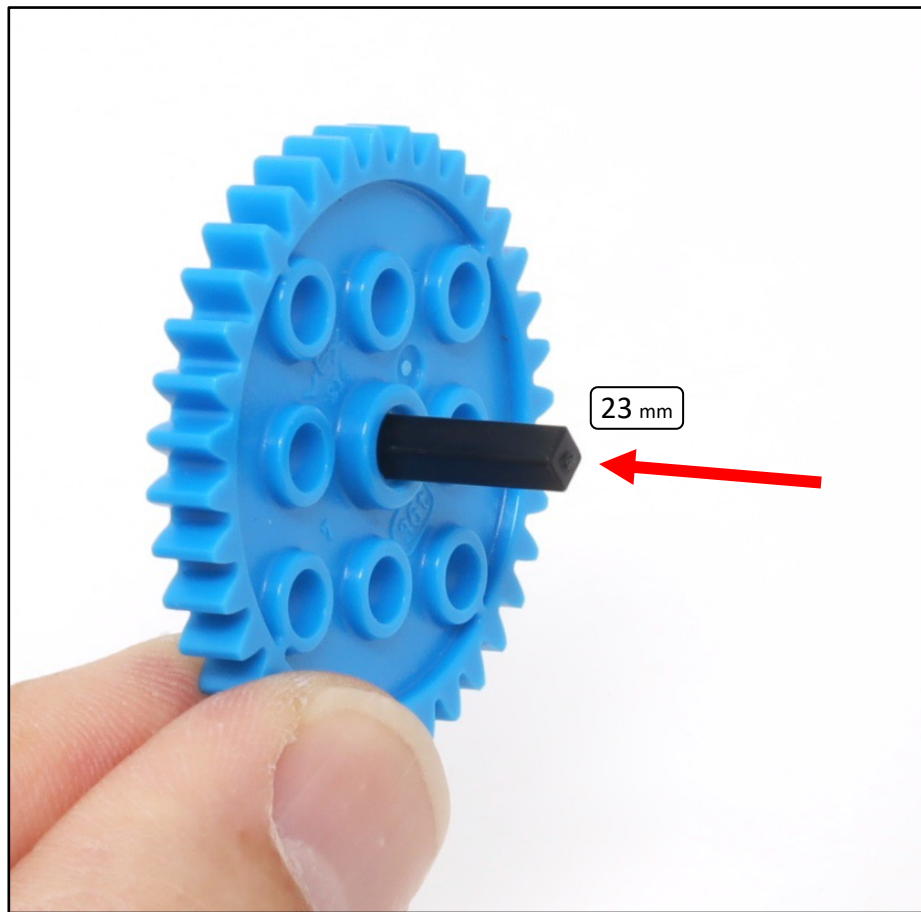


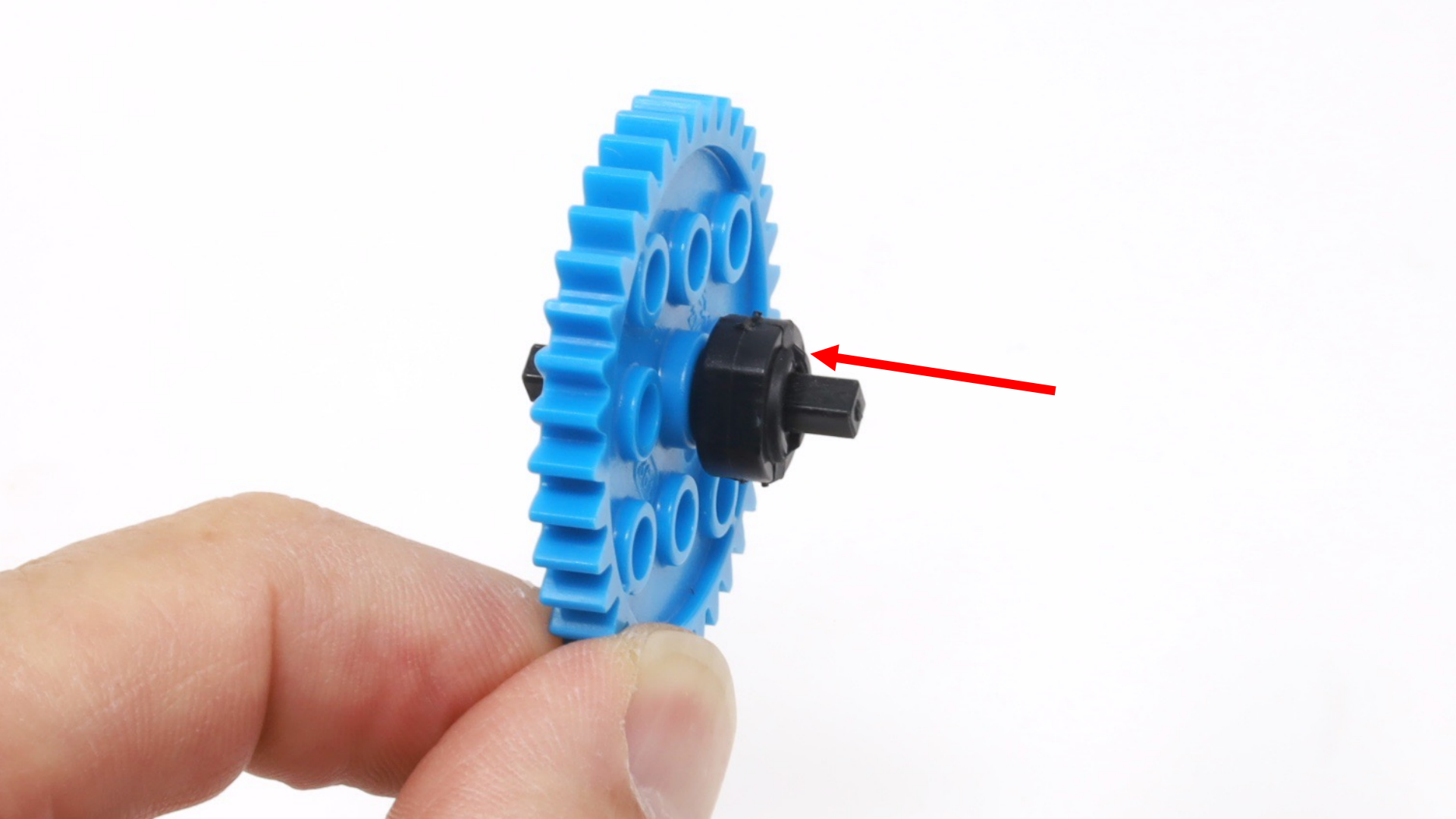
74 mm

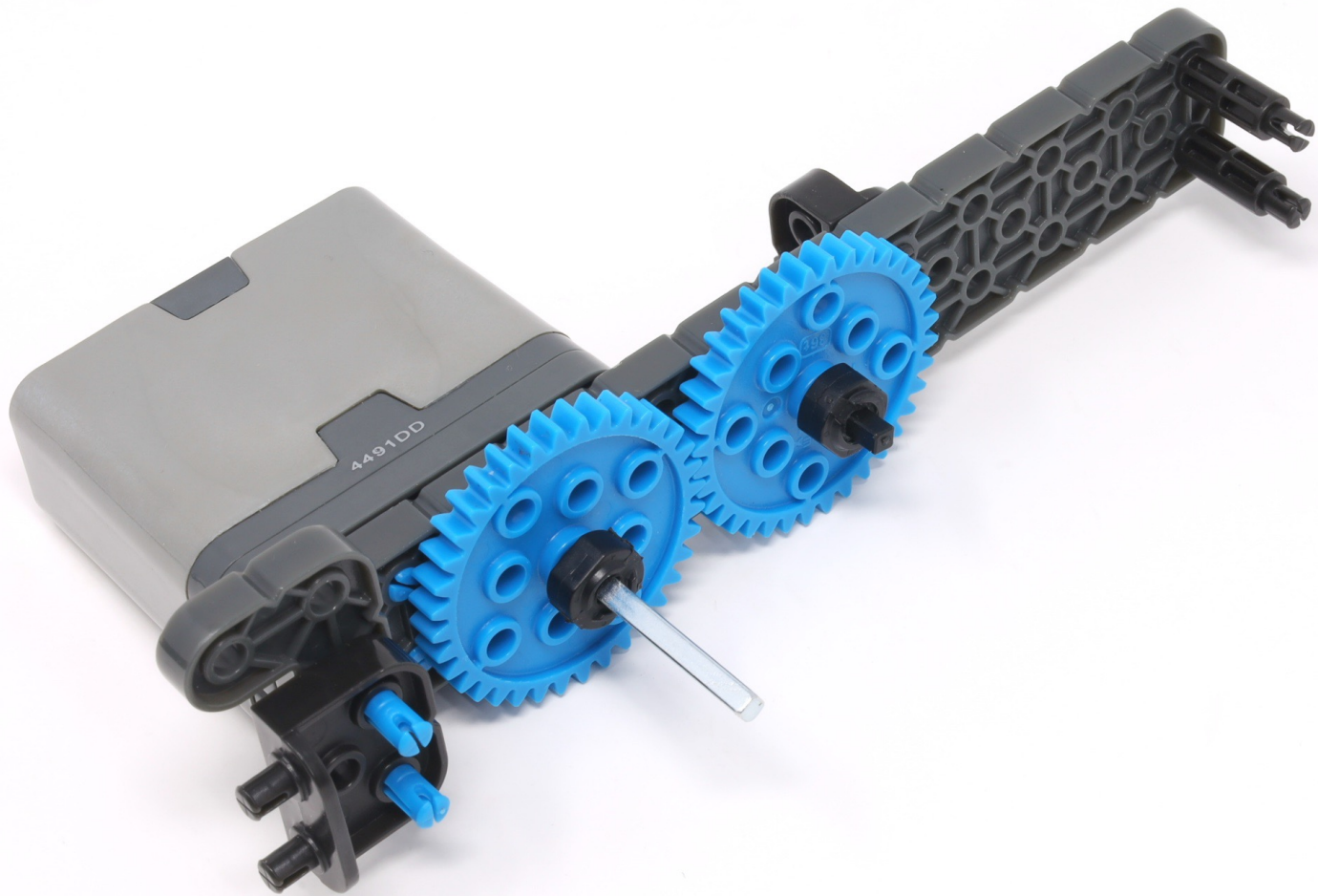


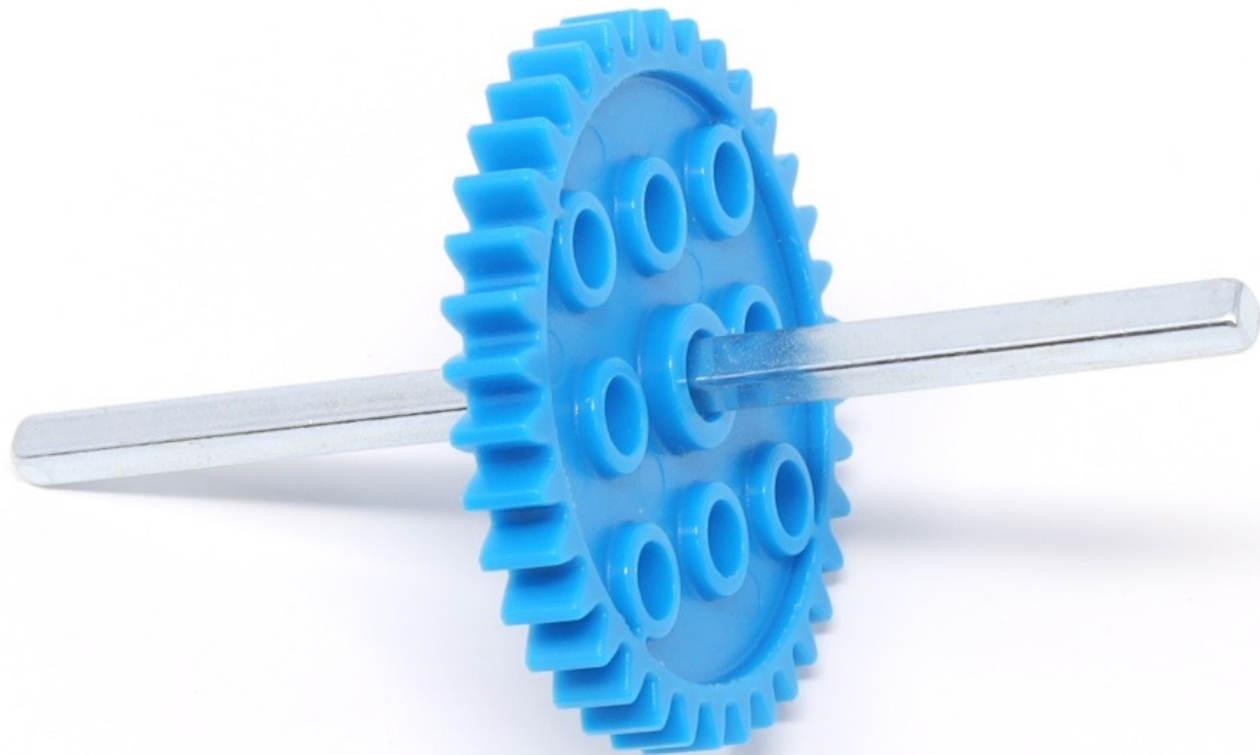
23 mm



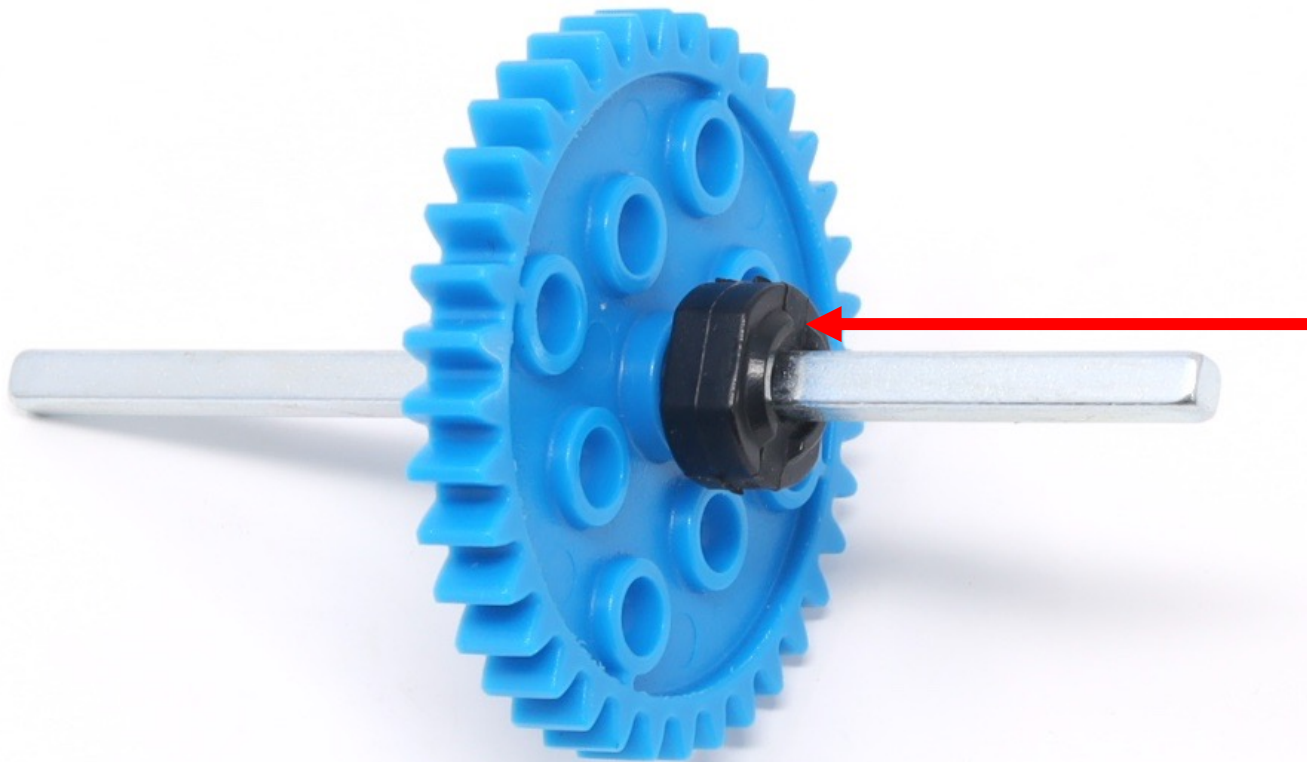


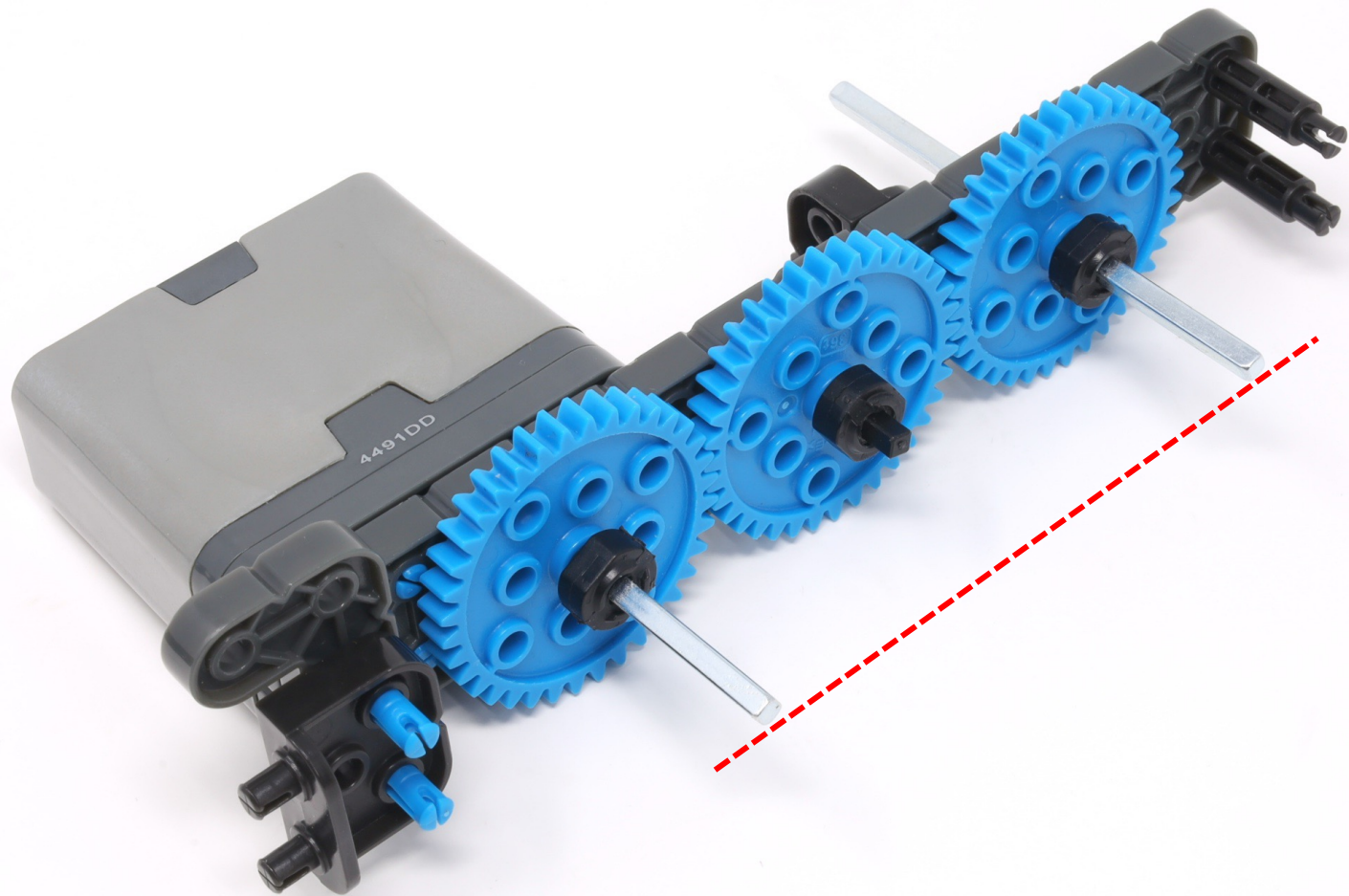


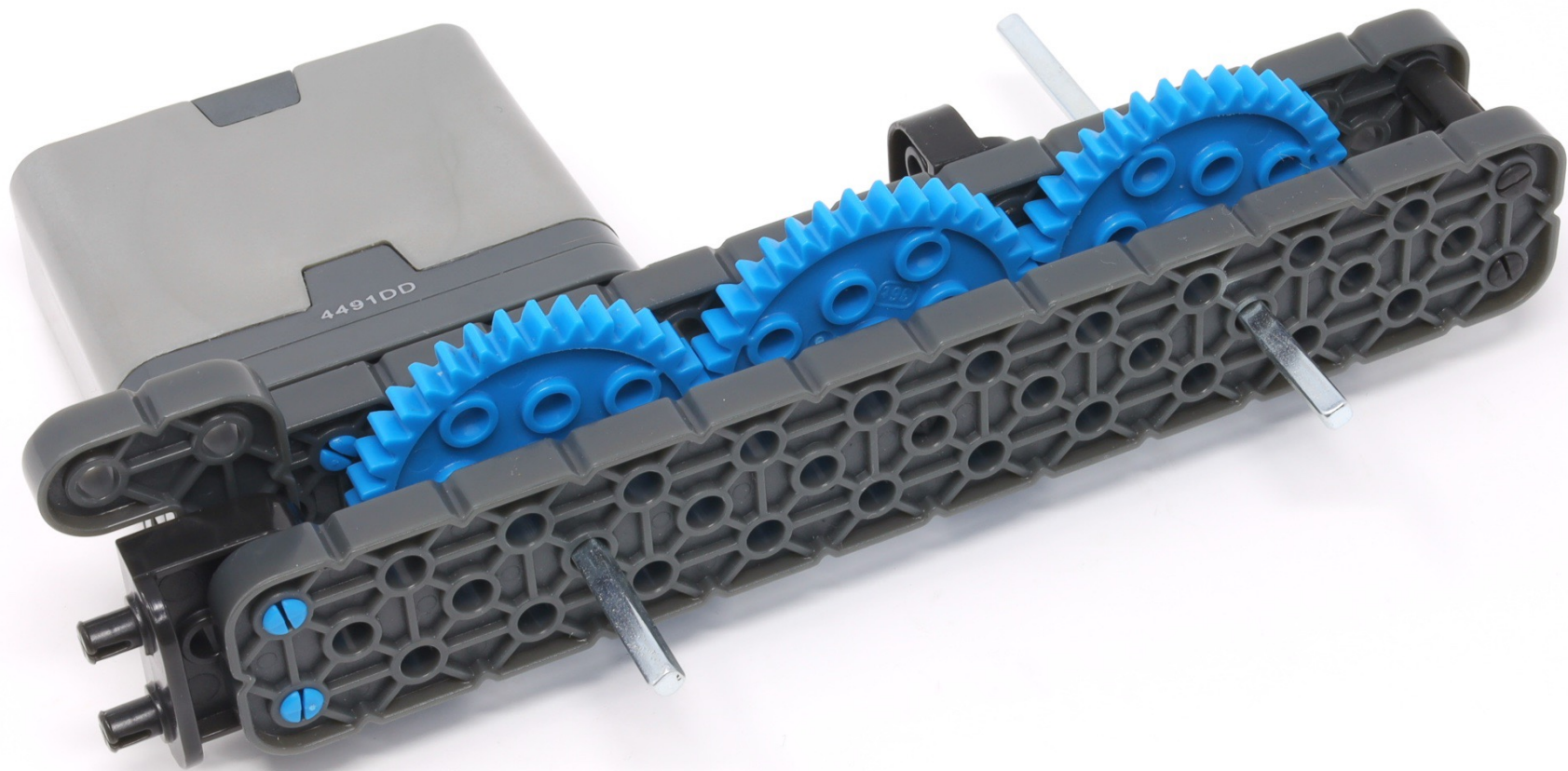




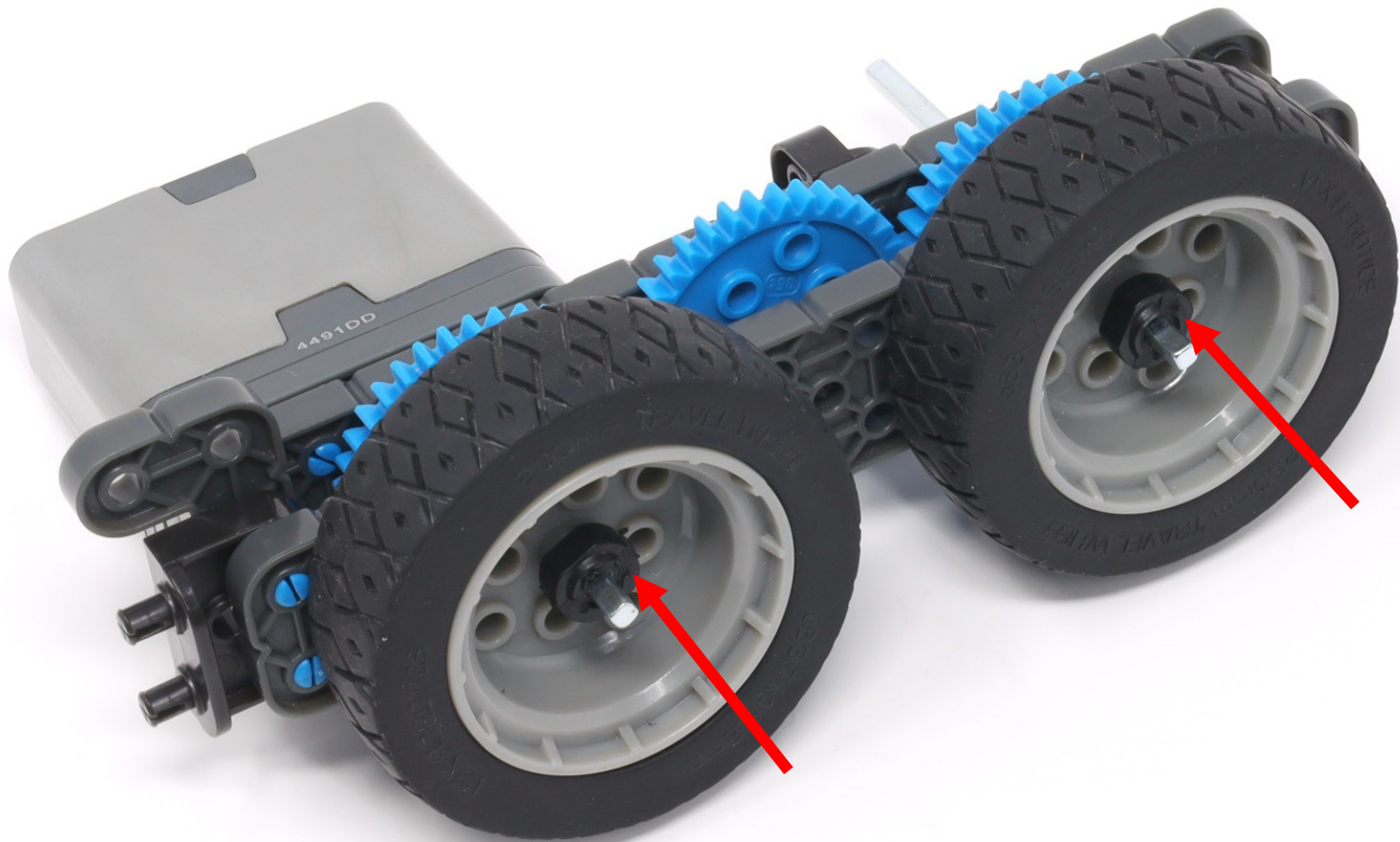
74 mm









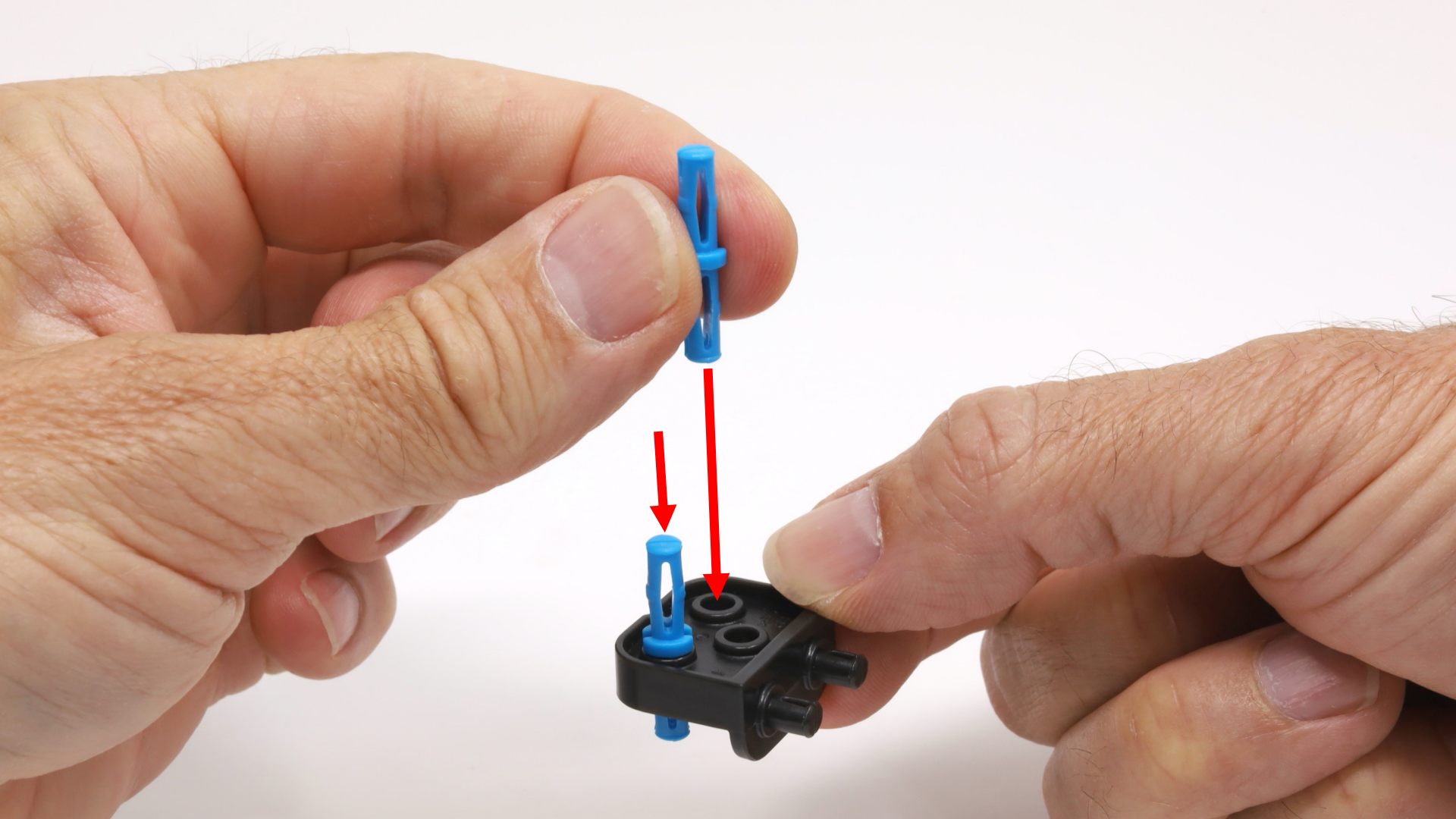


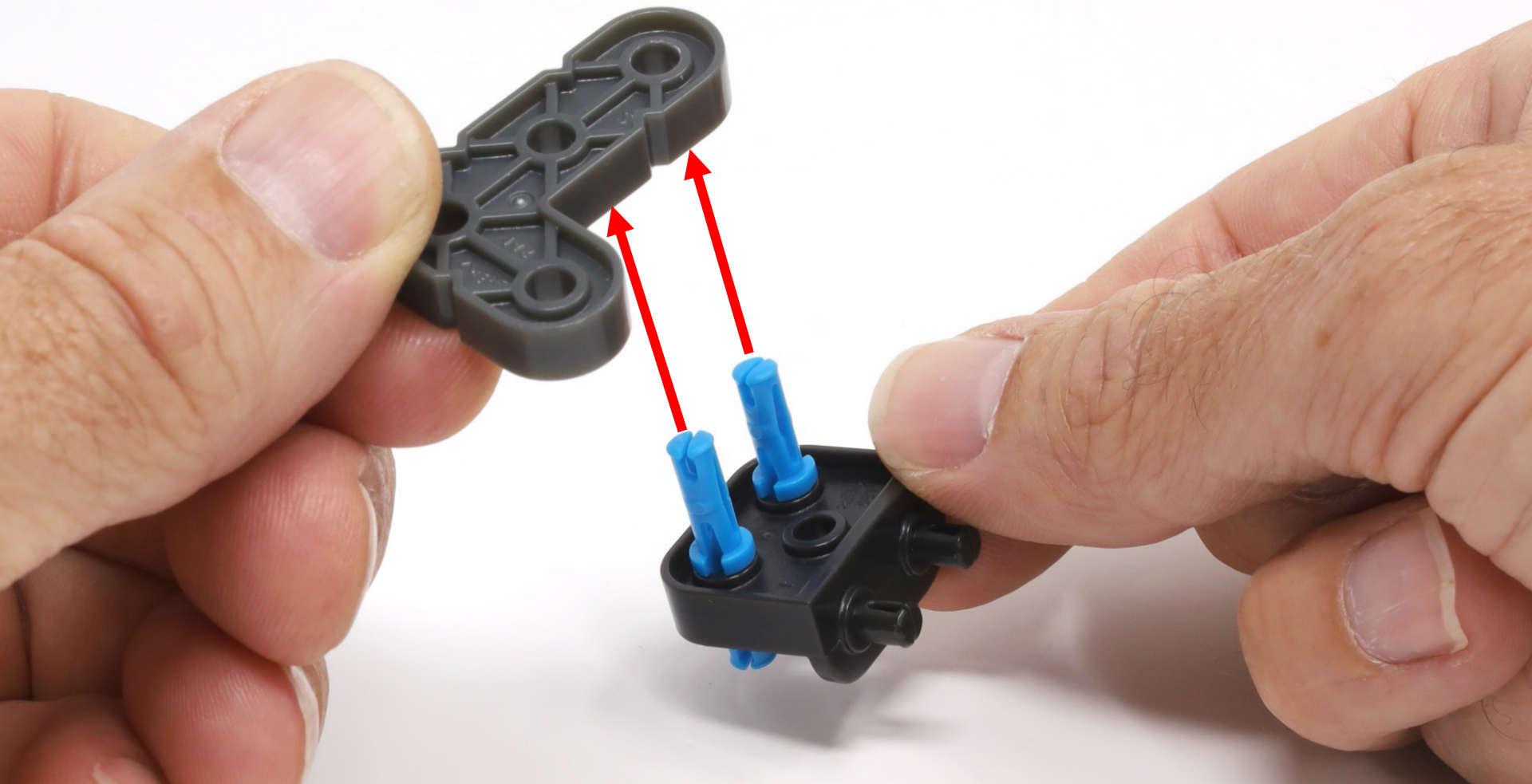


2 x 12

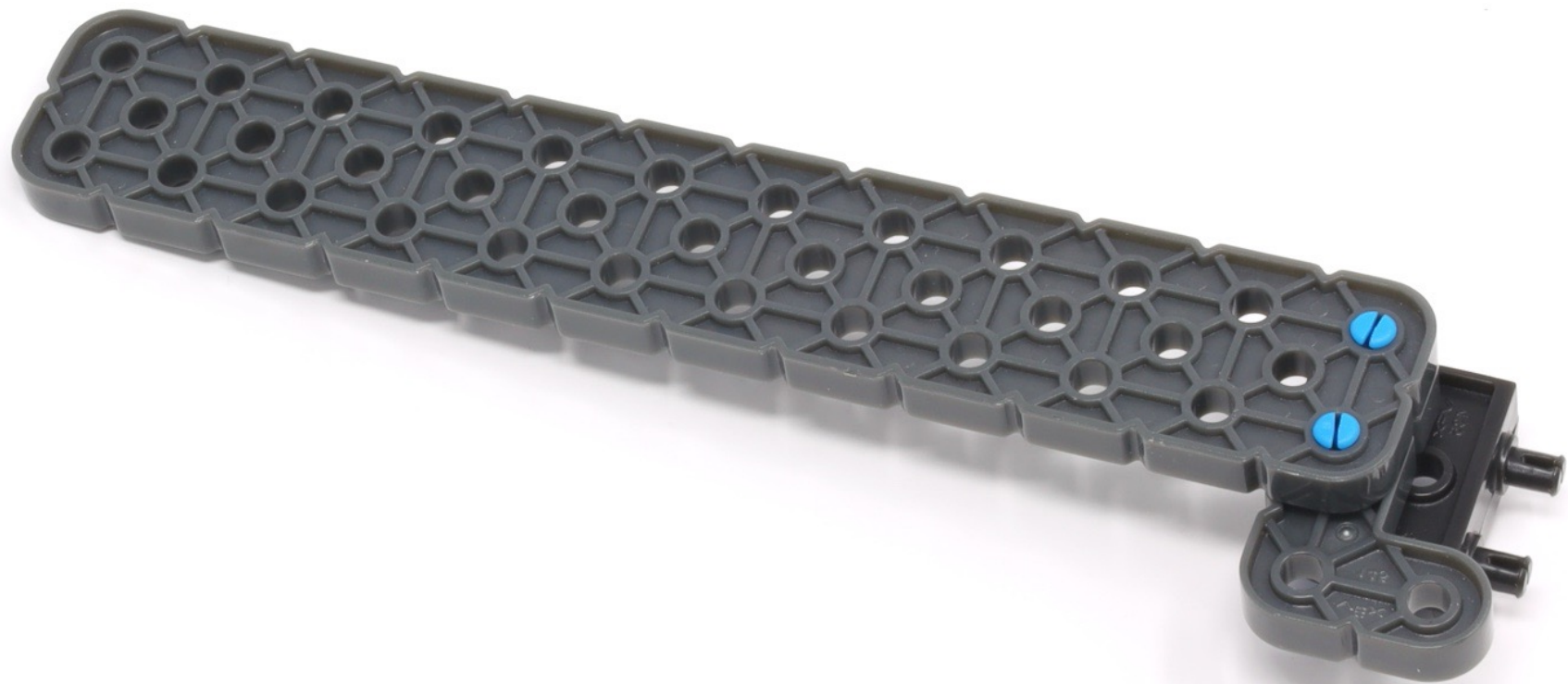


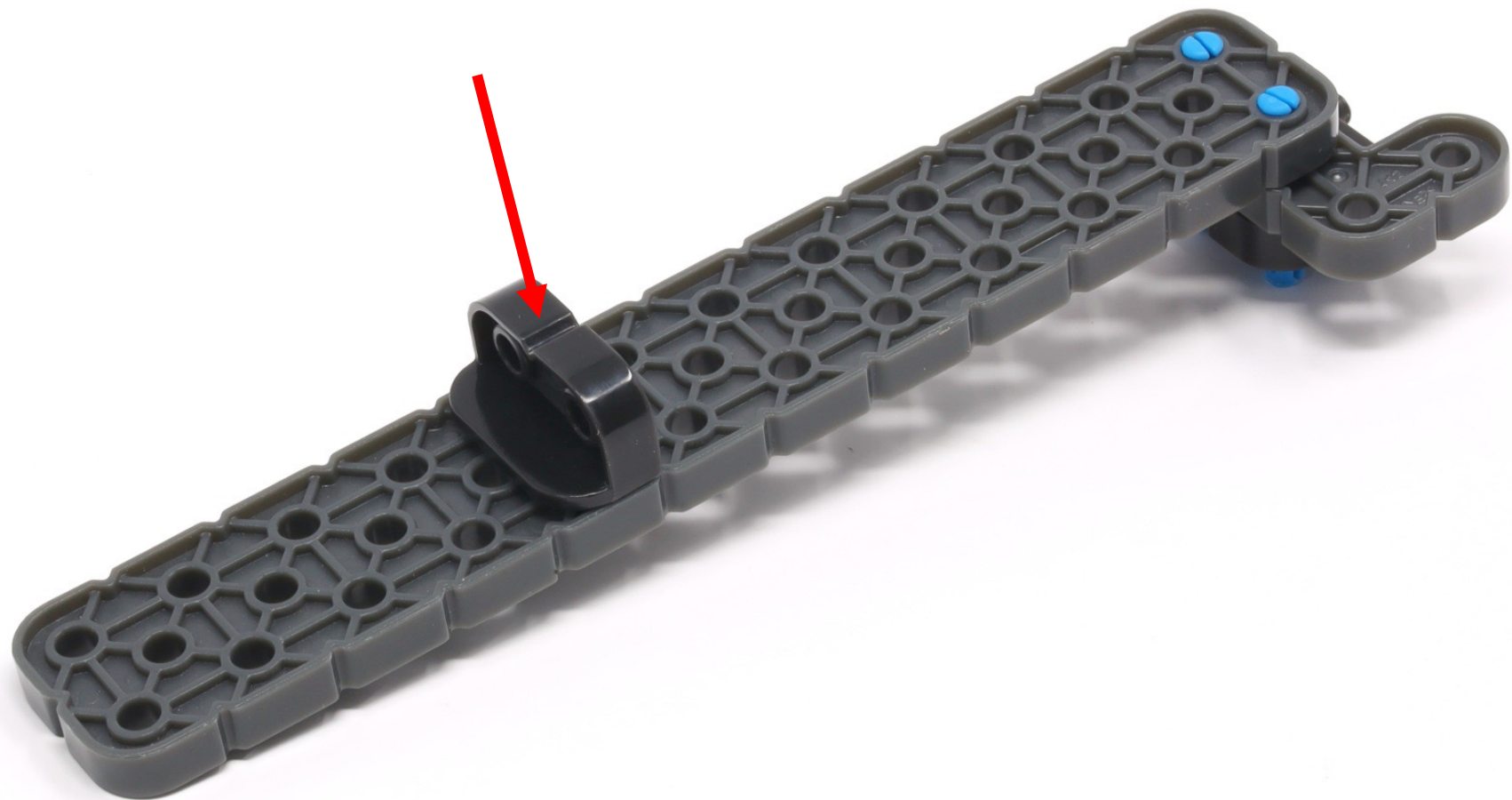
(4 thickness size)













48 mm



25 mm



25 mm



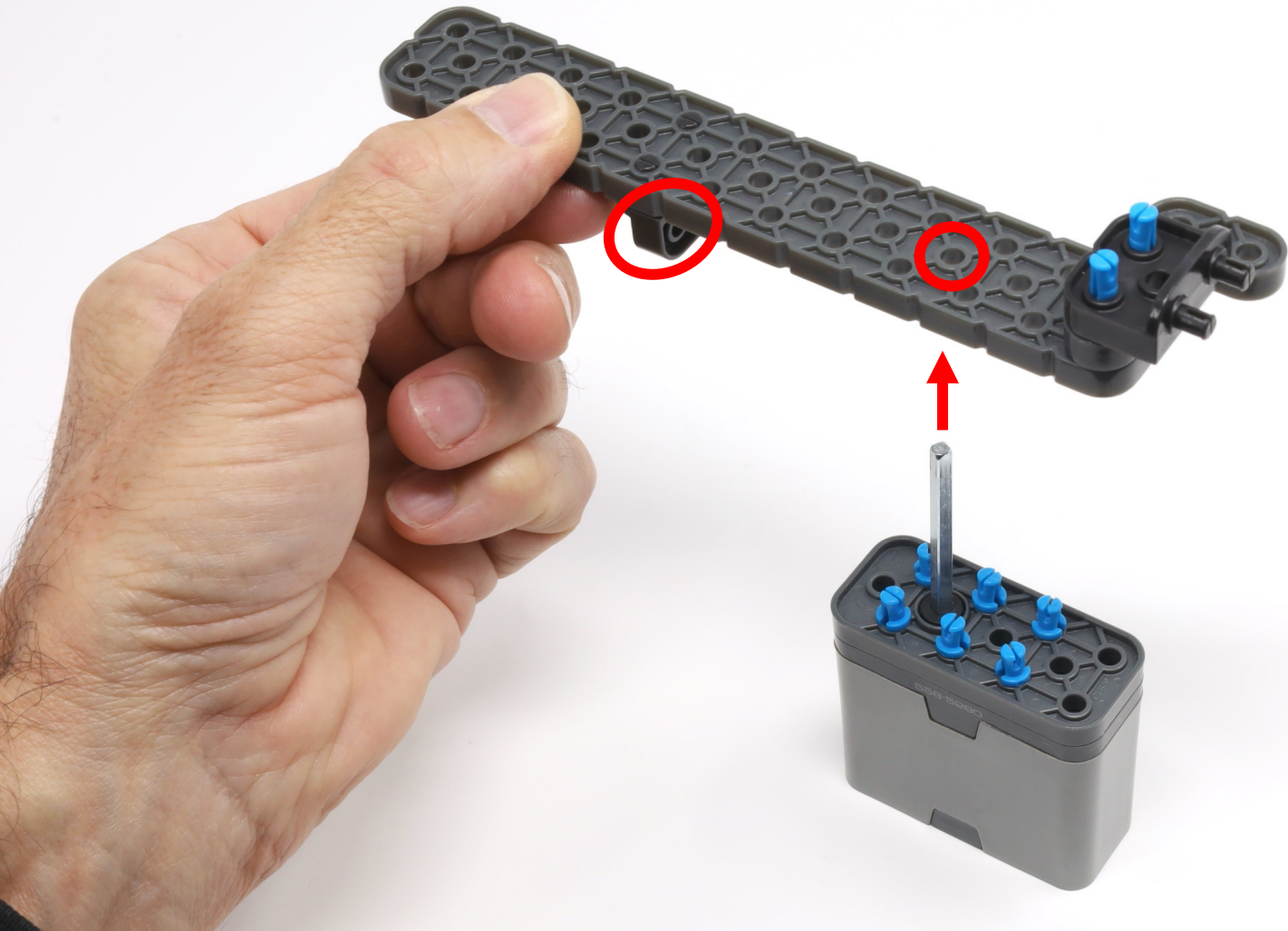
(6 x)

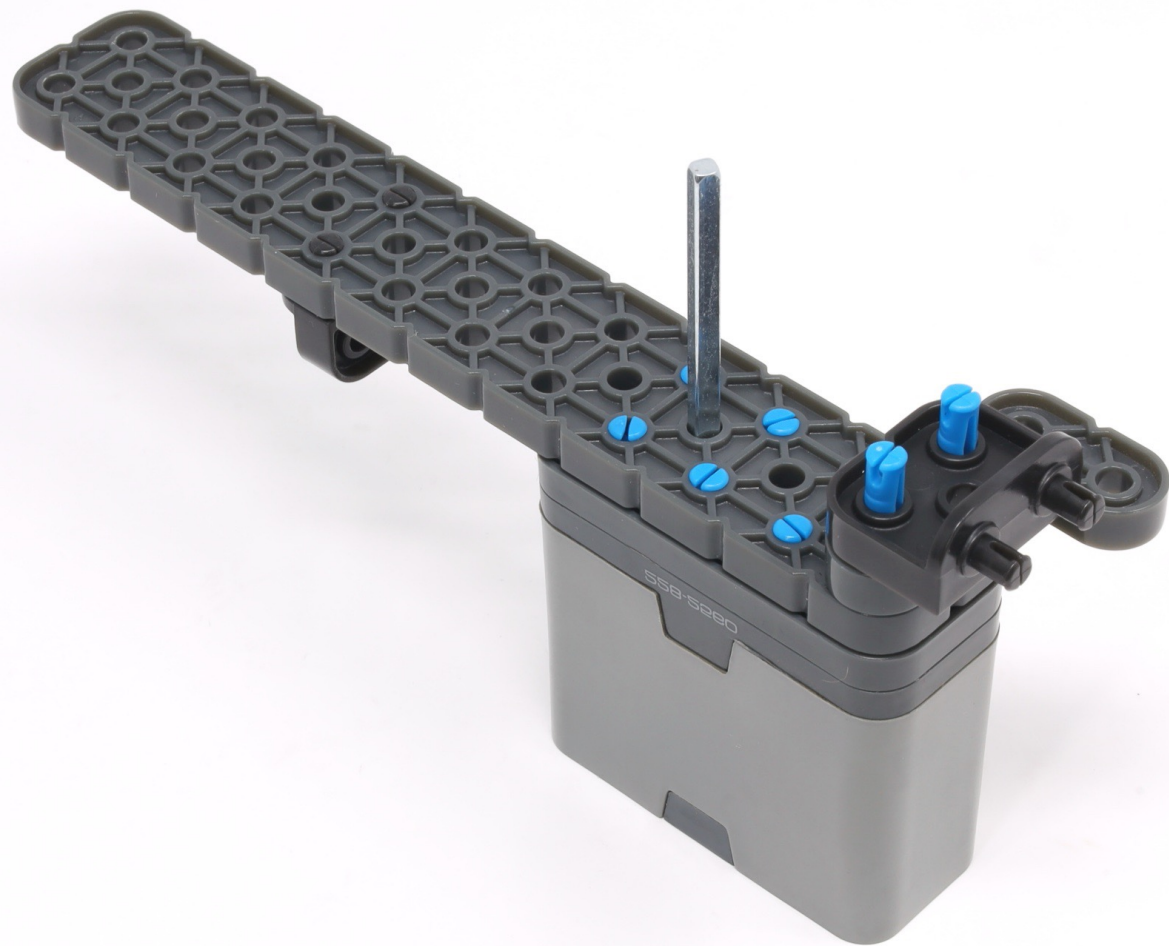


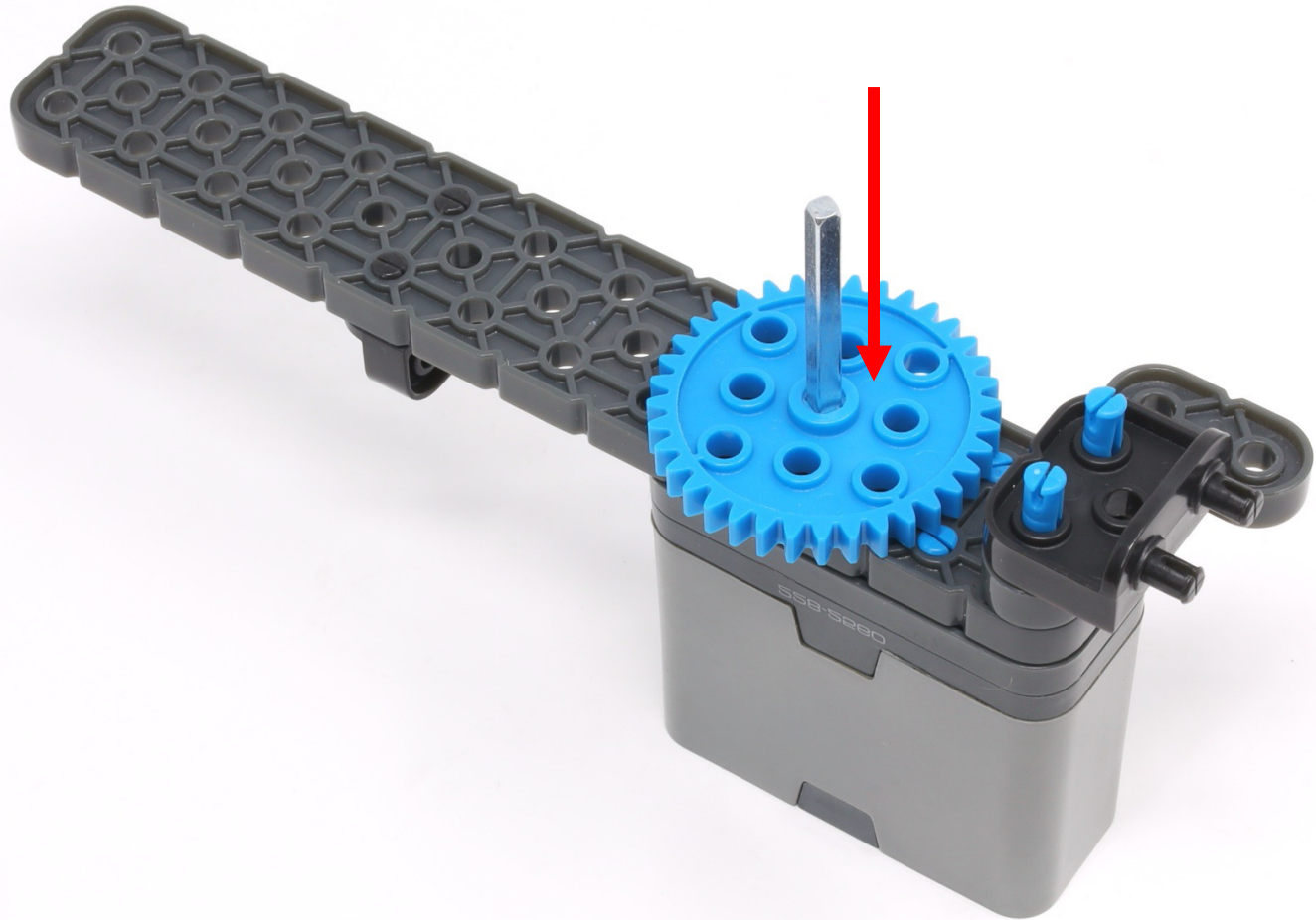


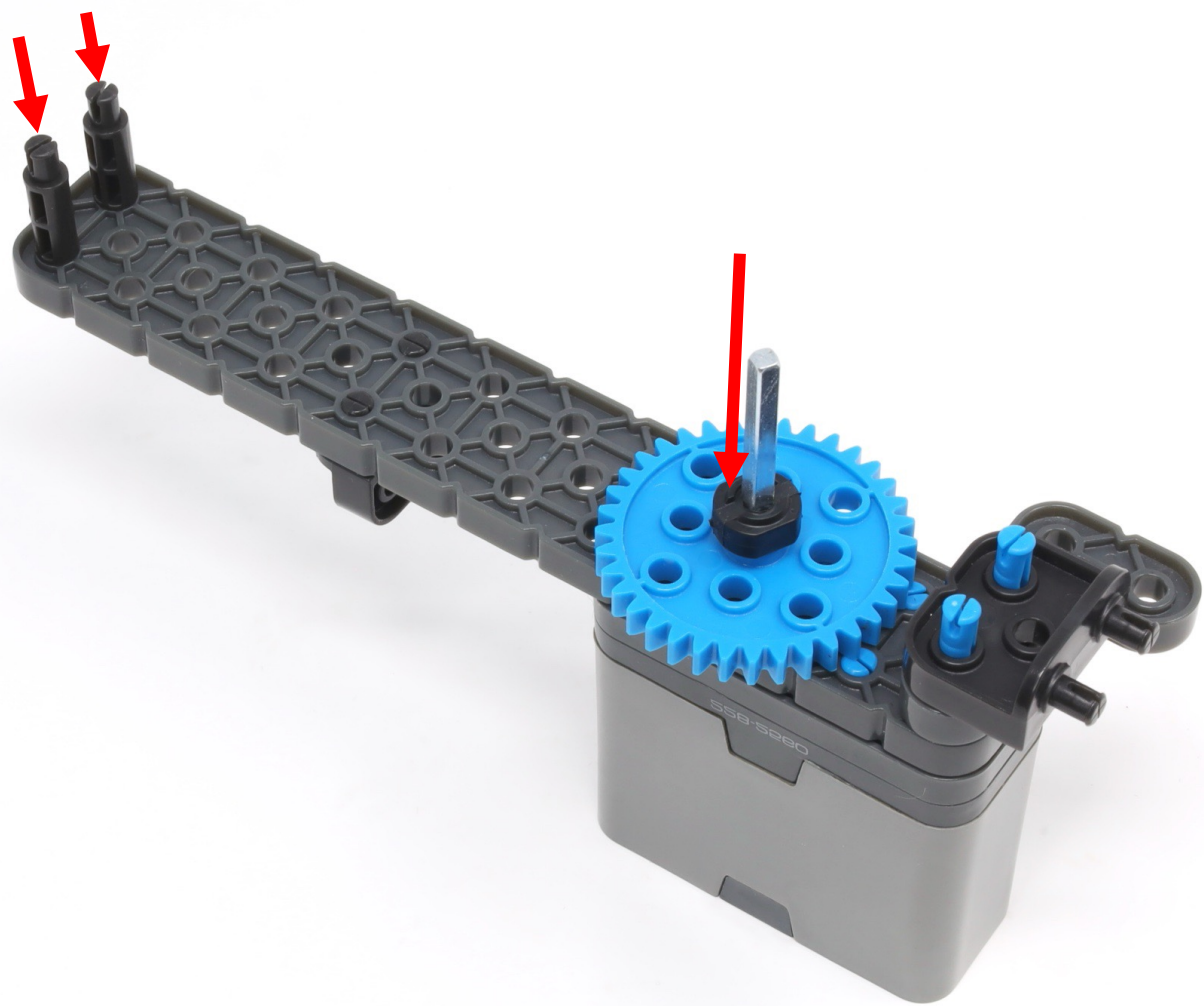
48 mm













2 x 12

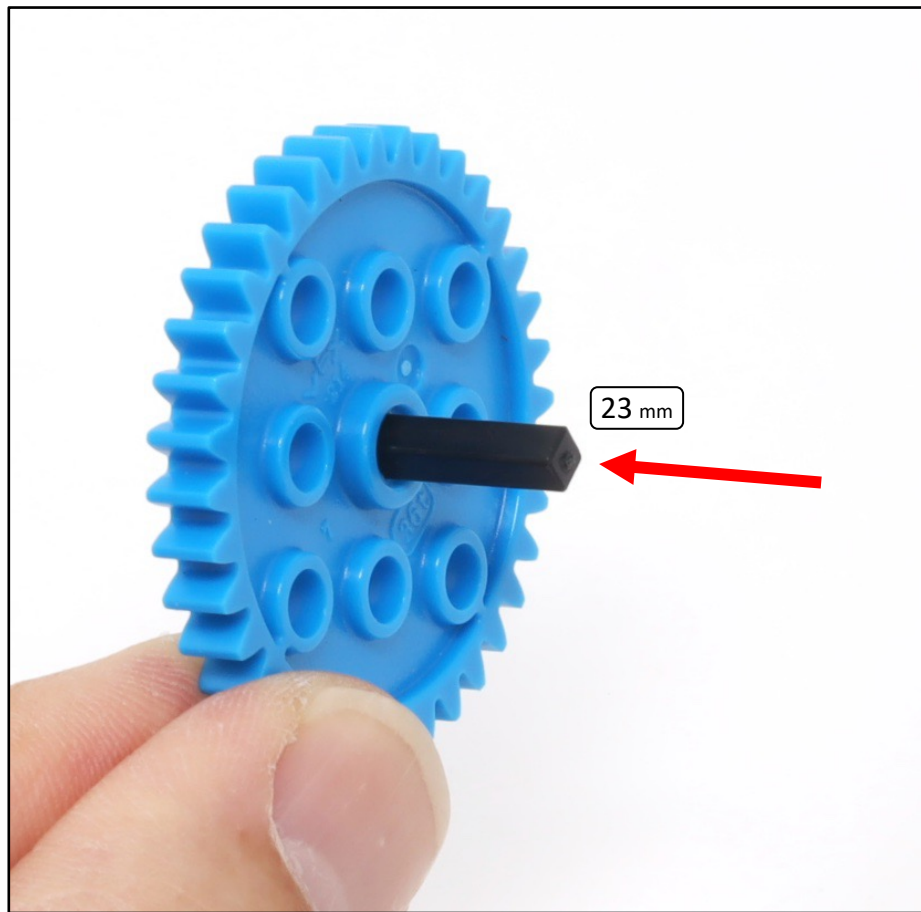


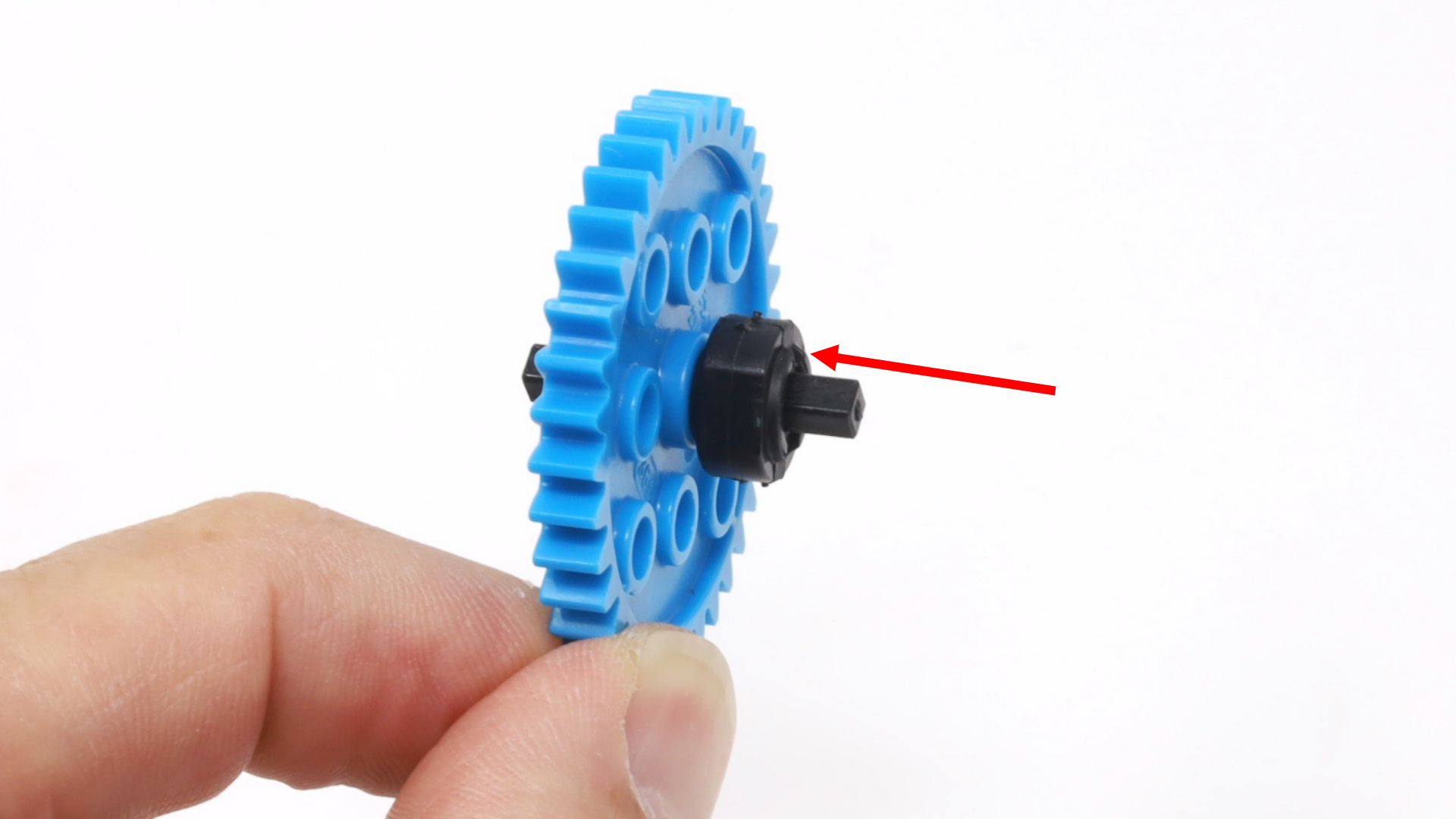
74 mm

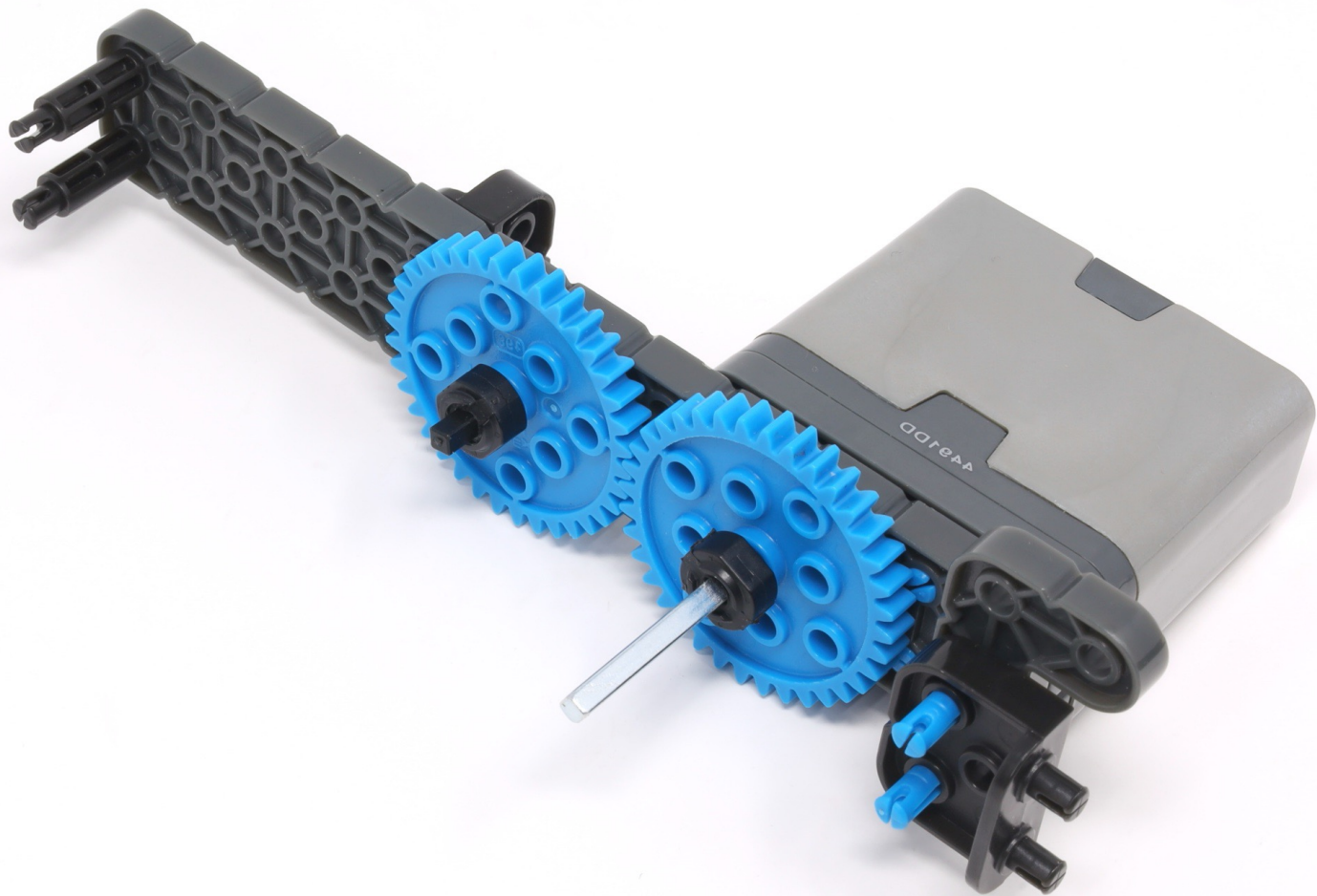


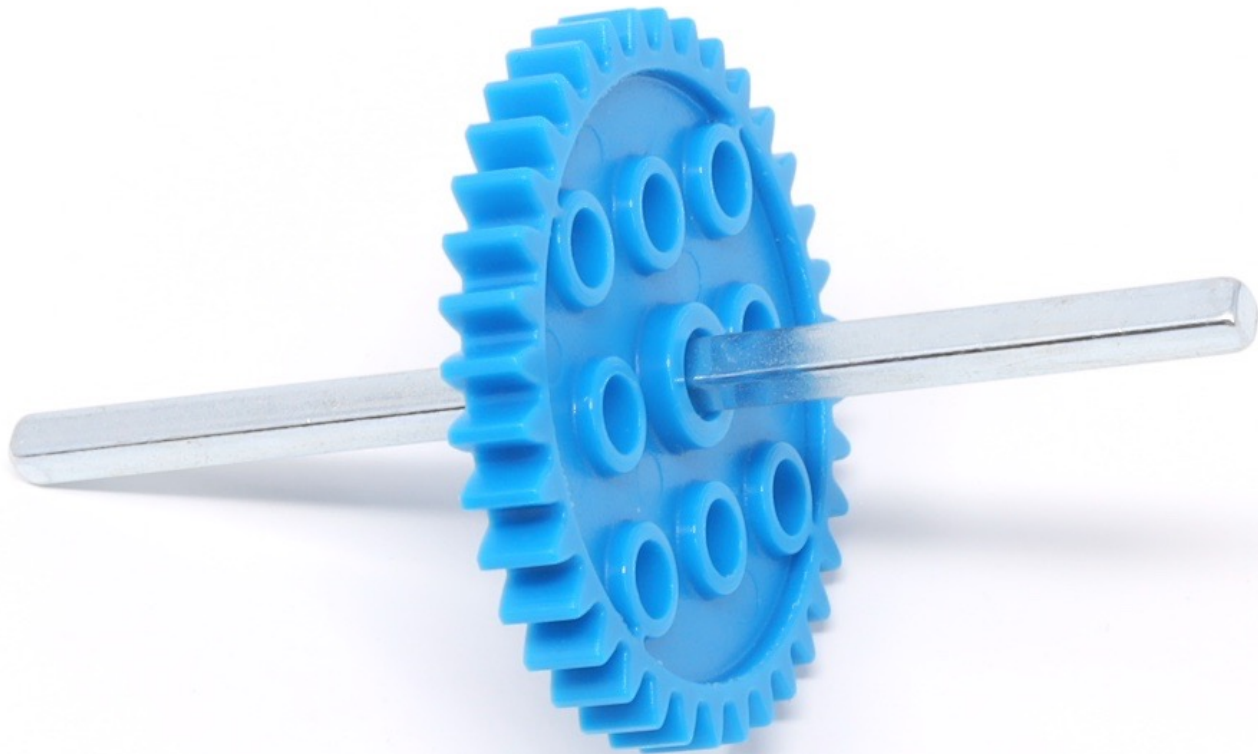
23 mm



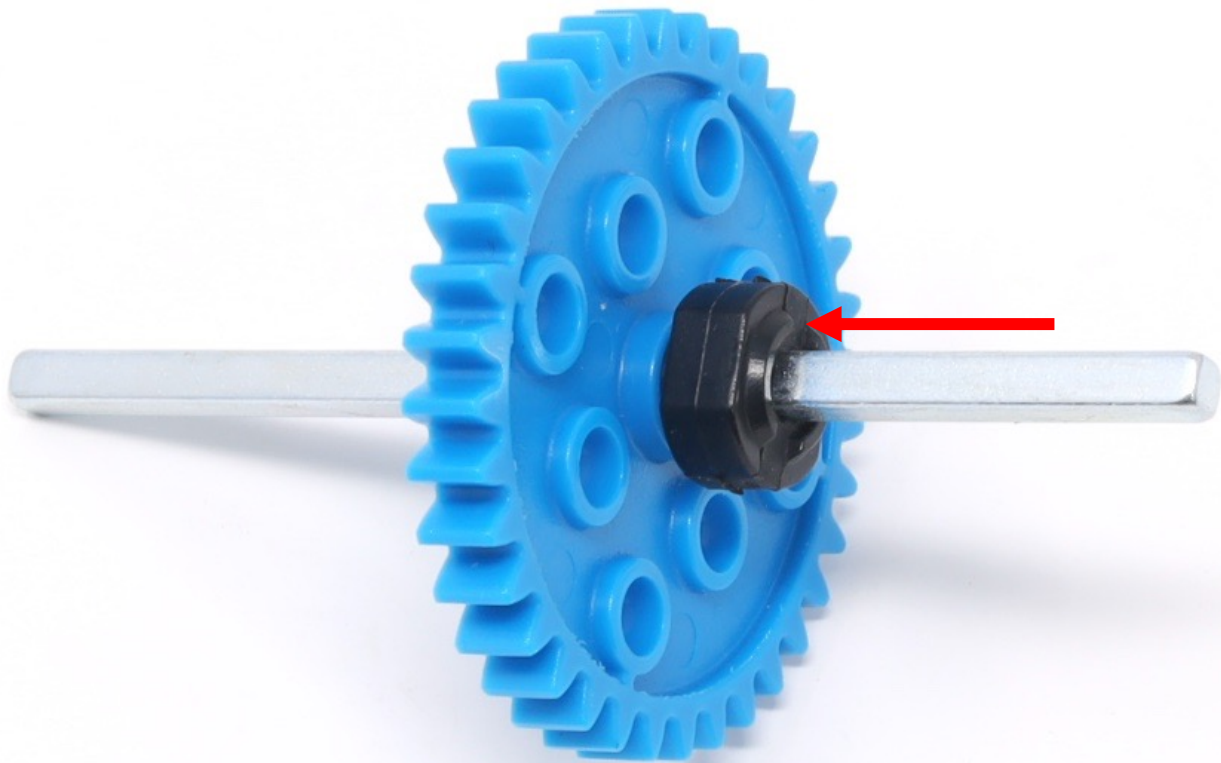


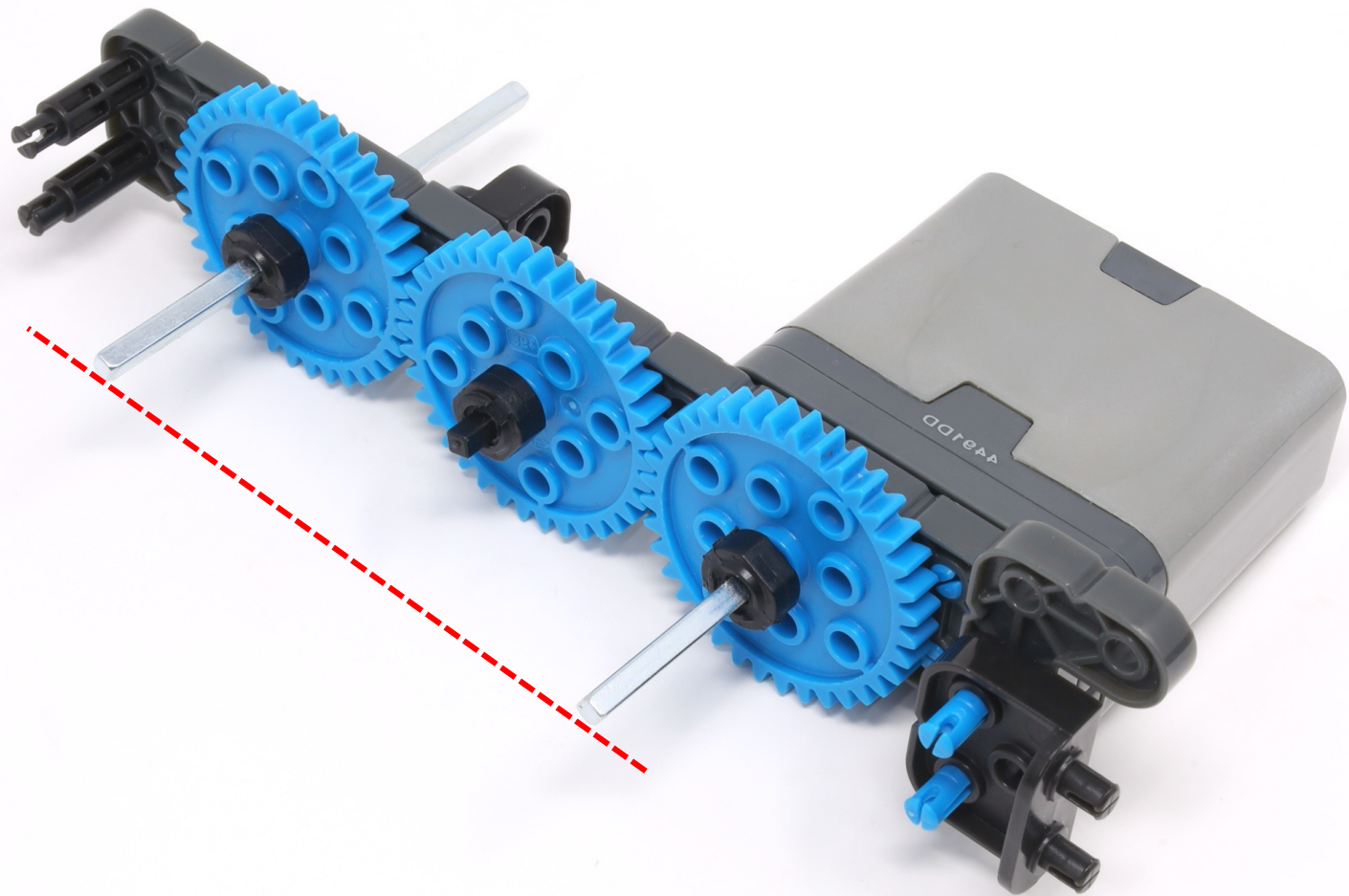


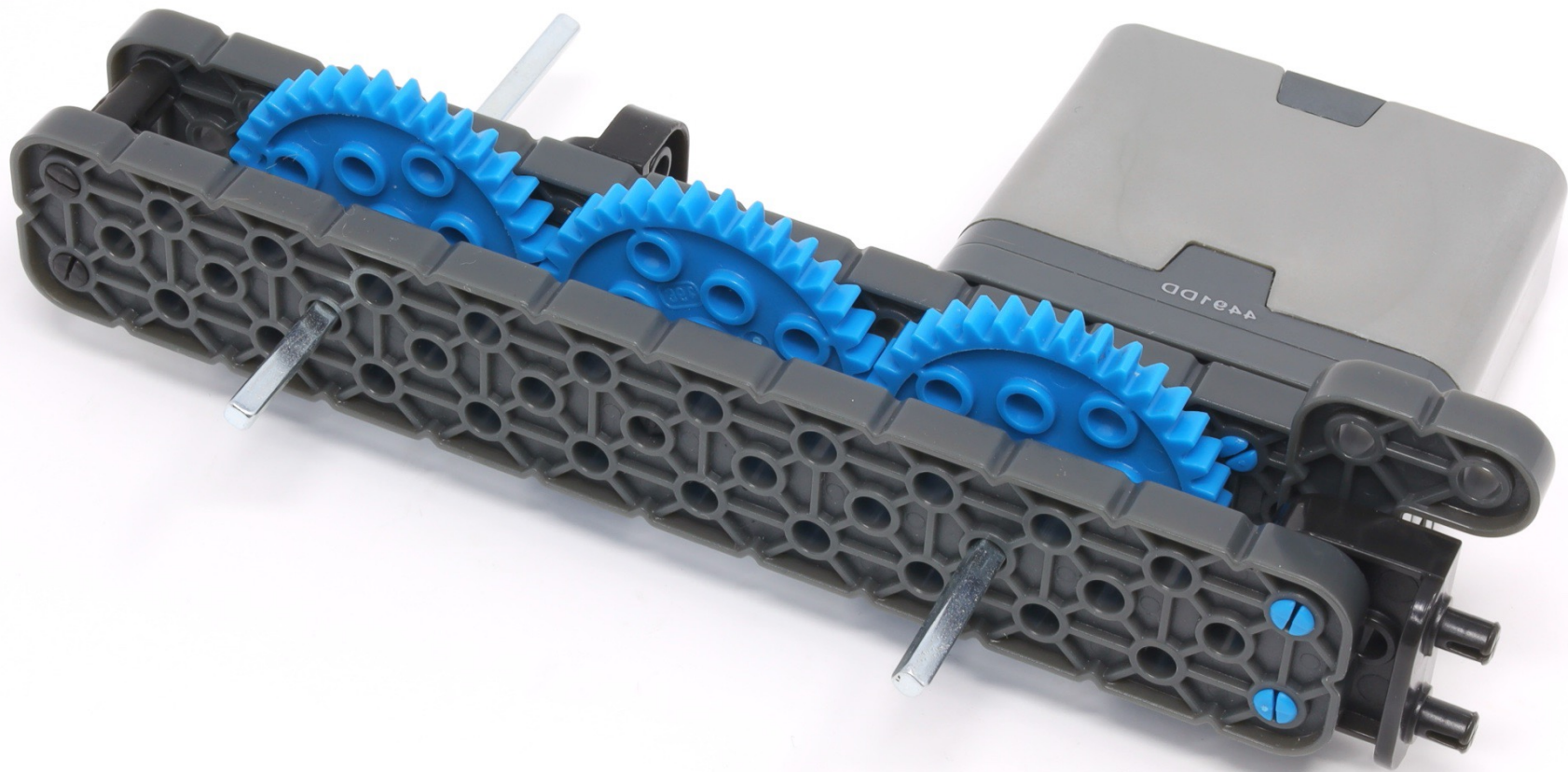




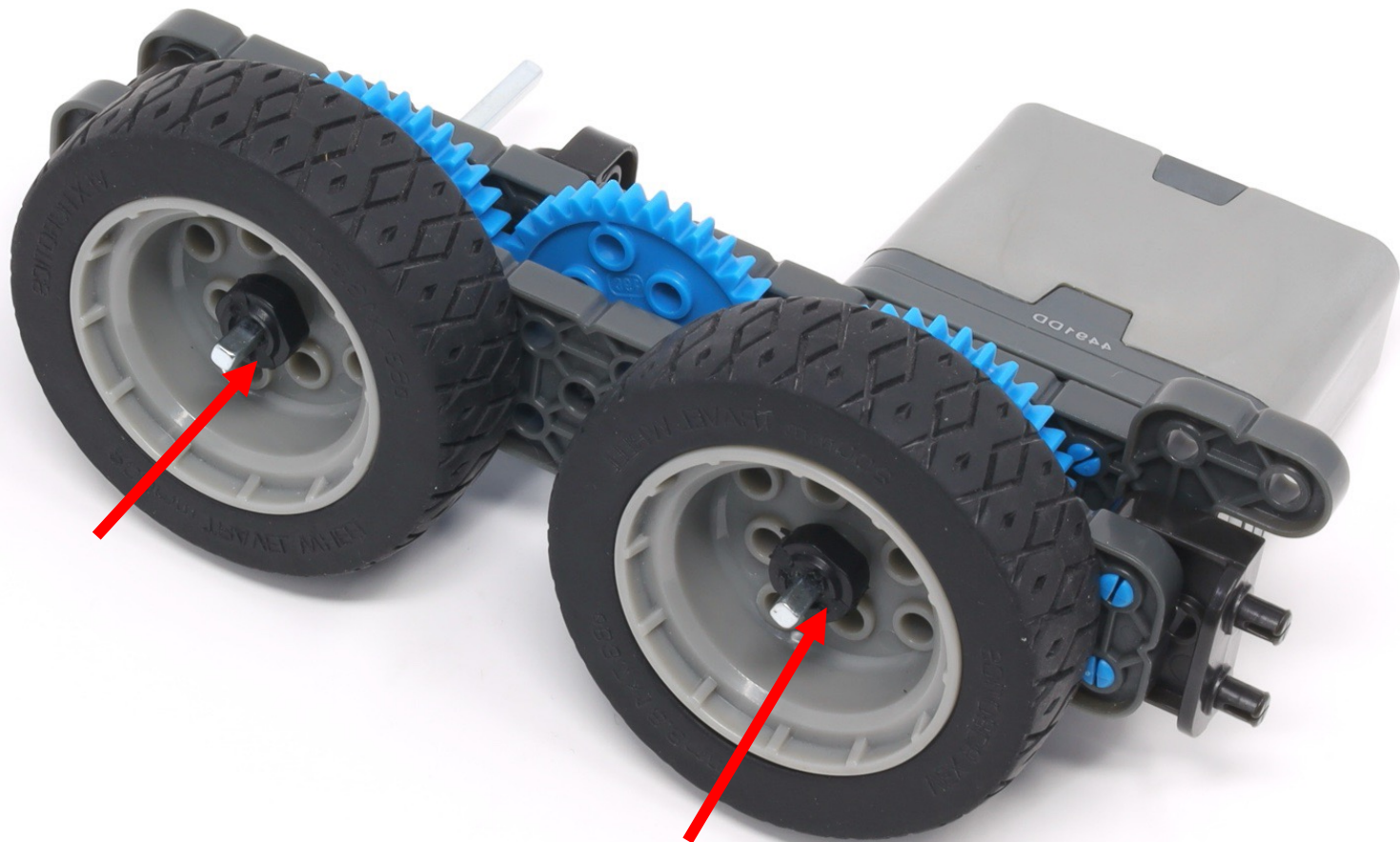
74 mm







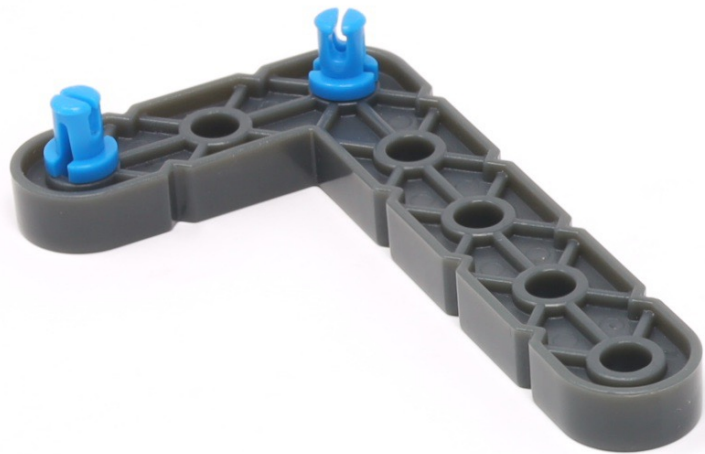




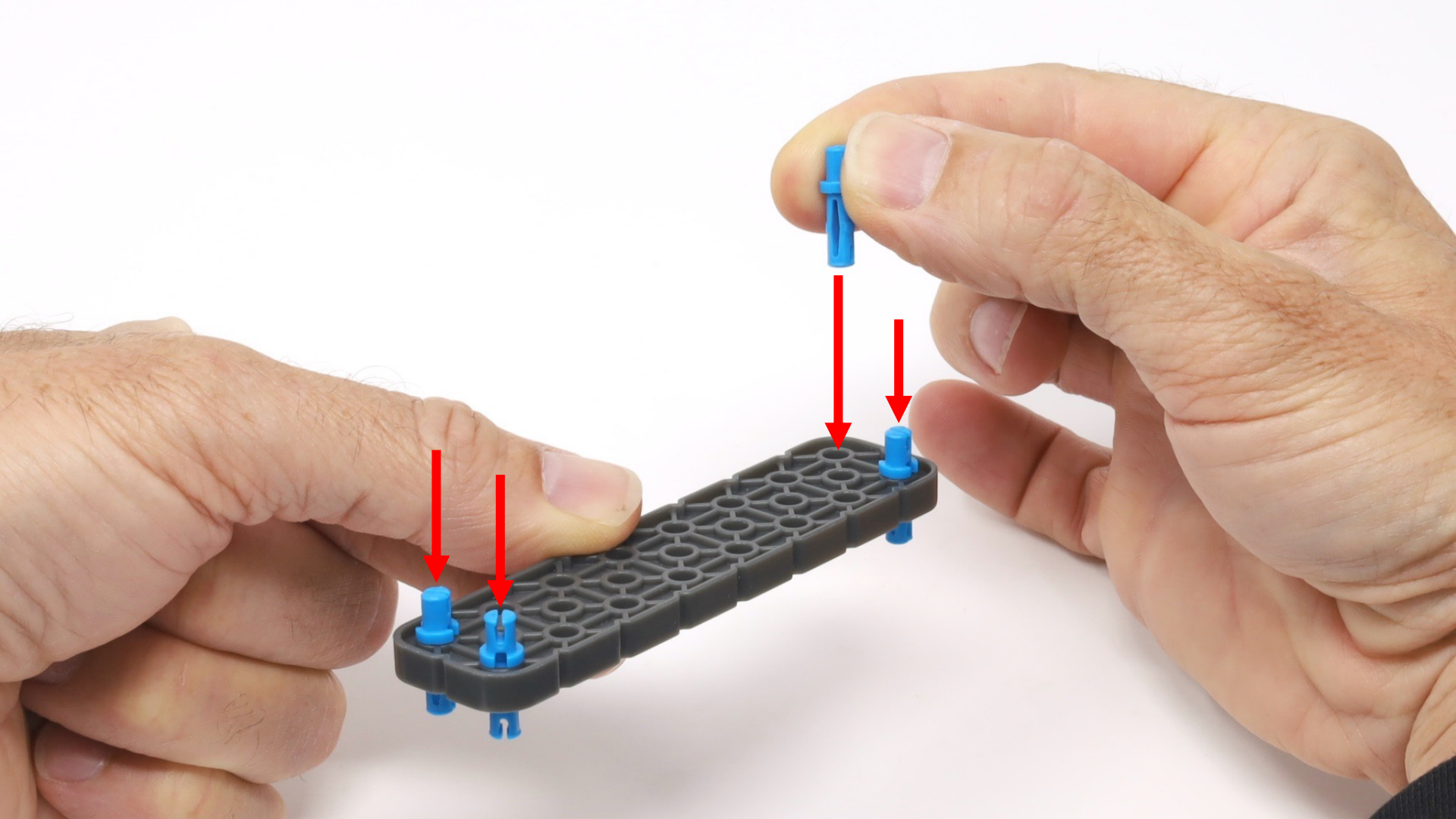


2 x 8









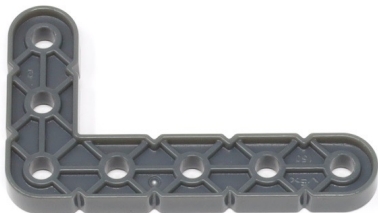




2 x 12



200 mm



1 x 6



1 x 6

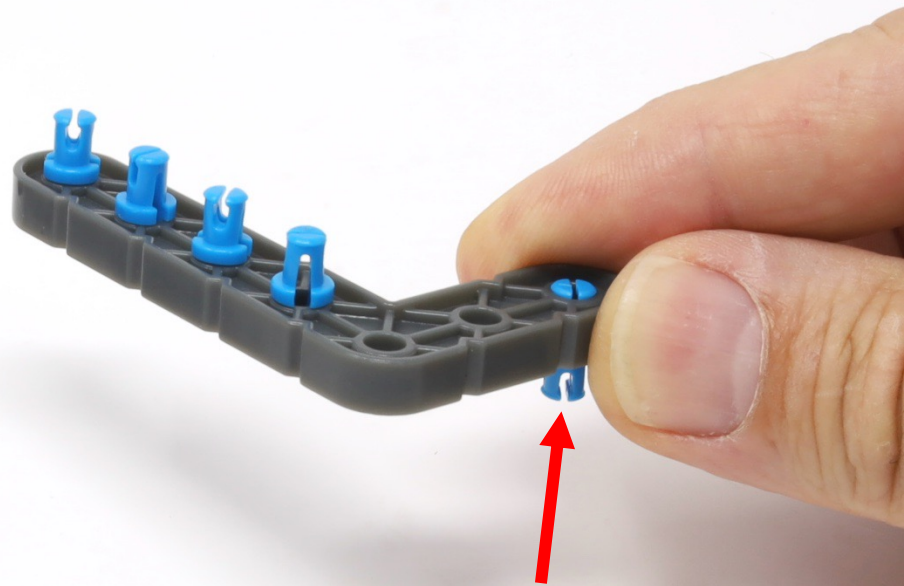
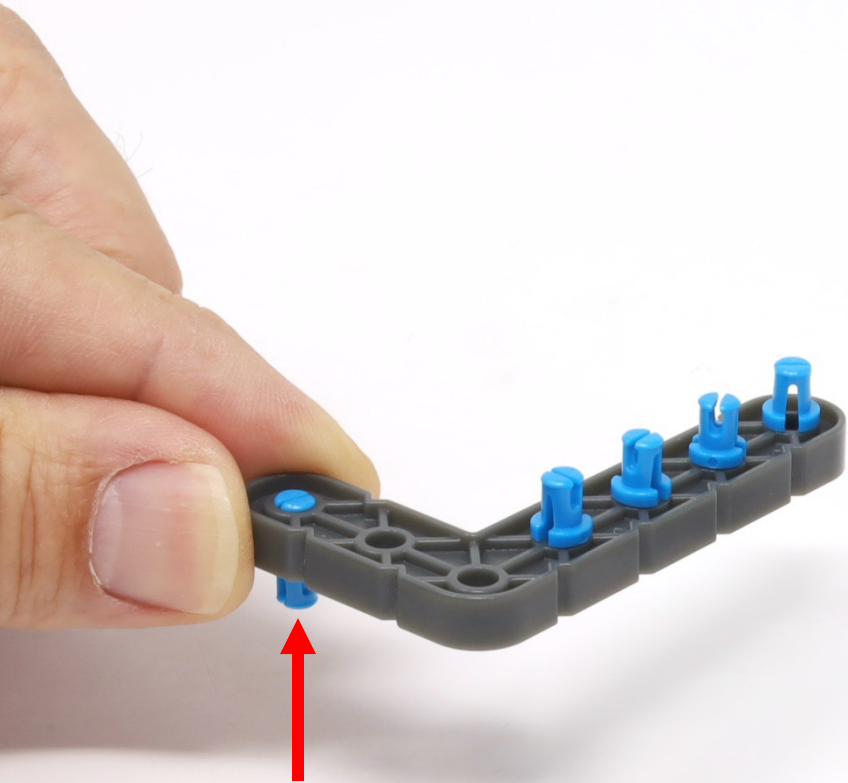


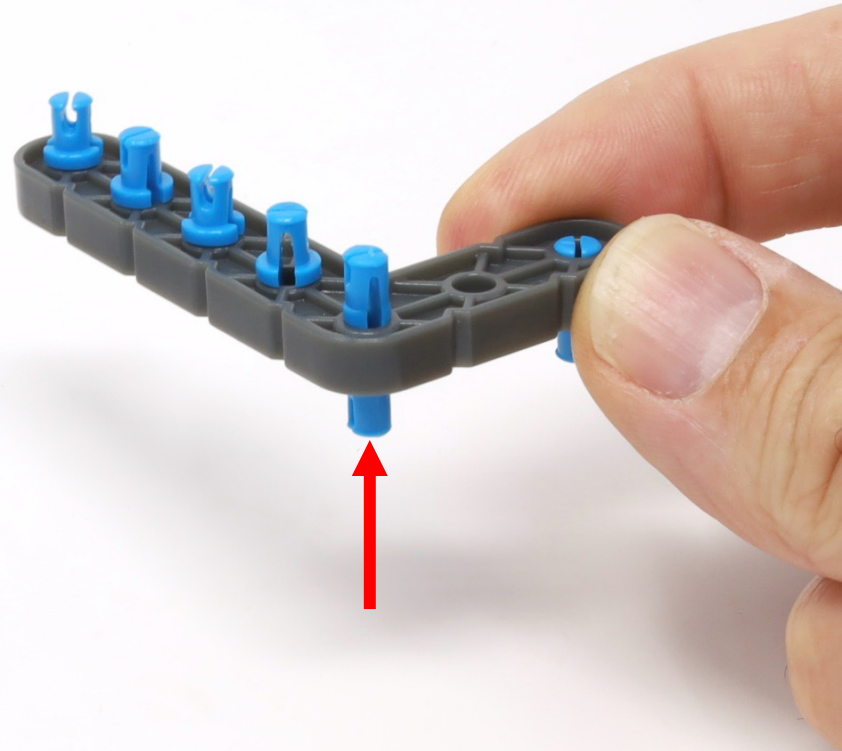
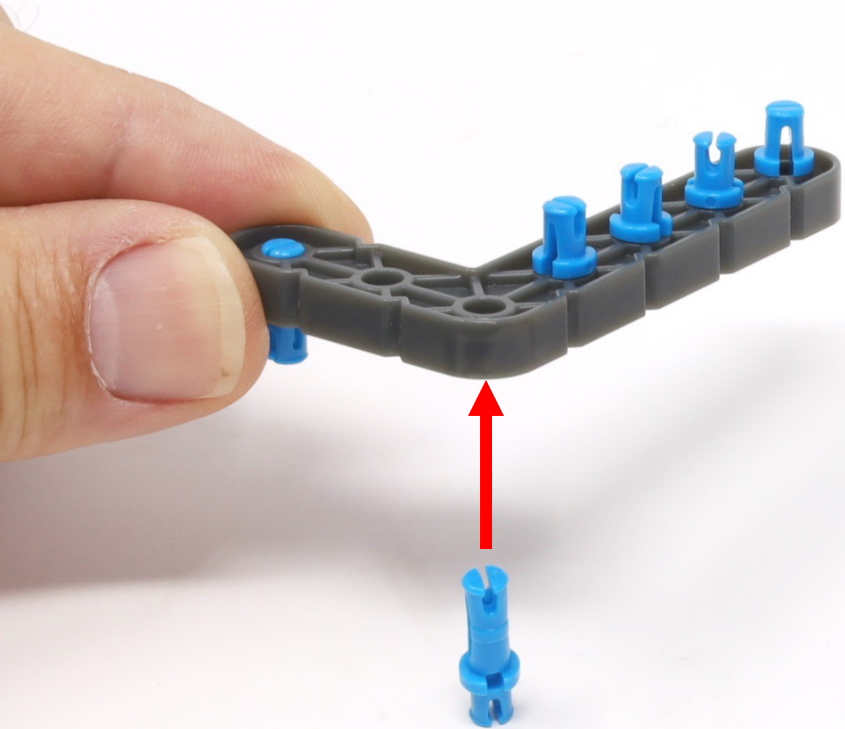
4 x 4



(18 x)

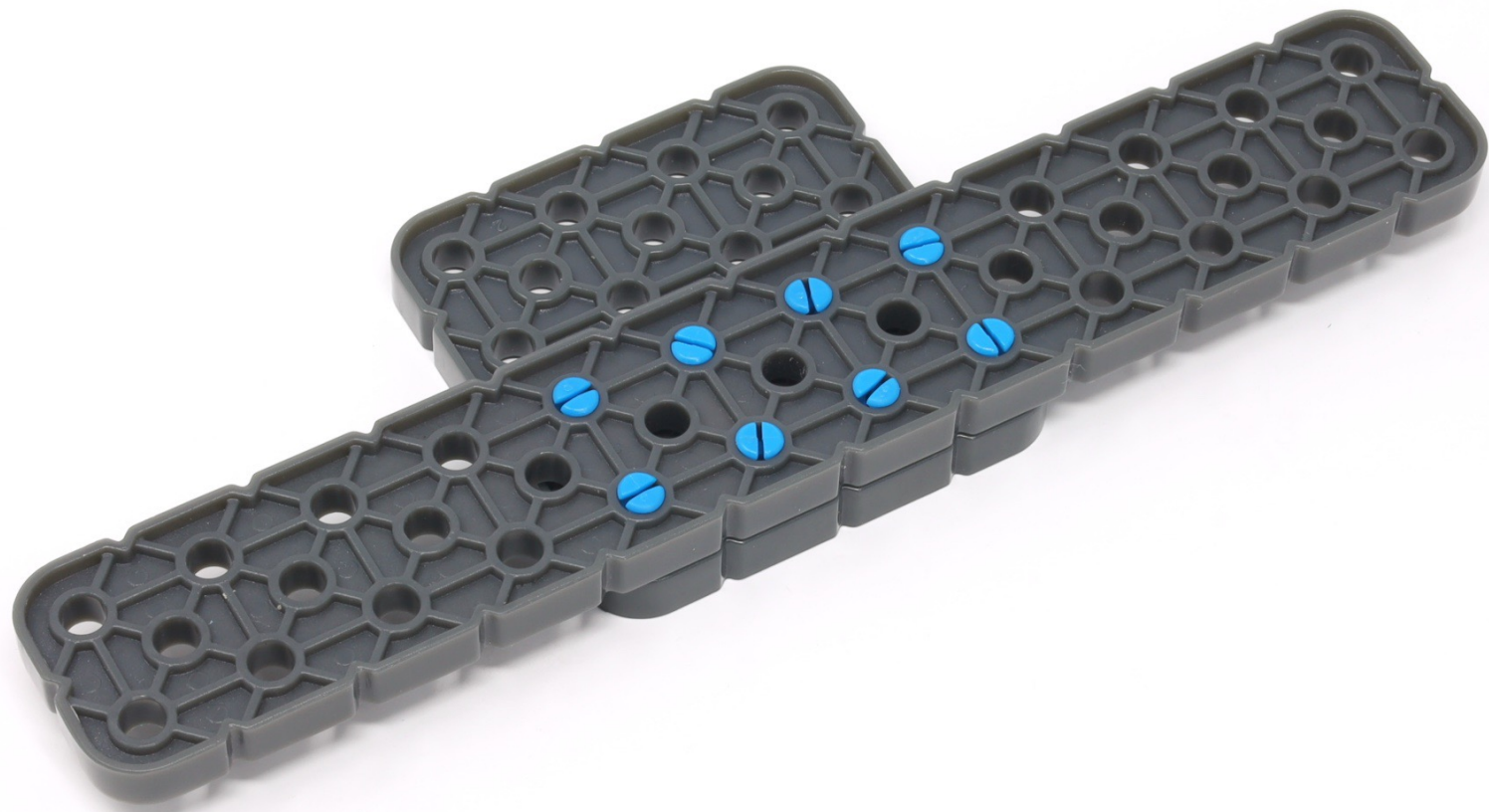






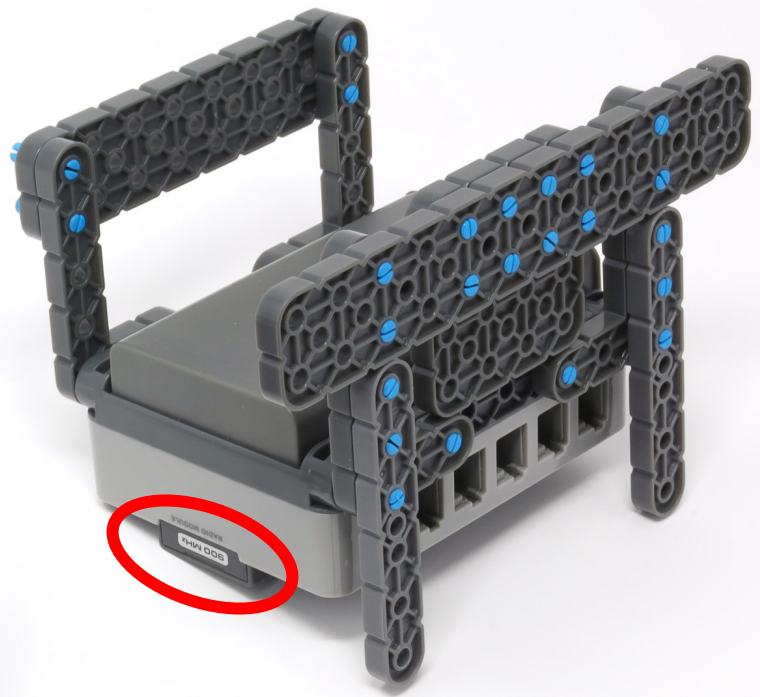
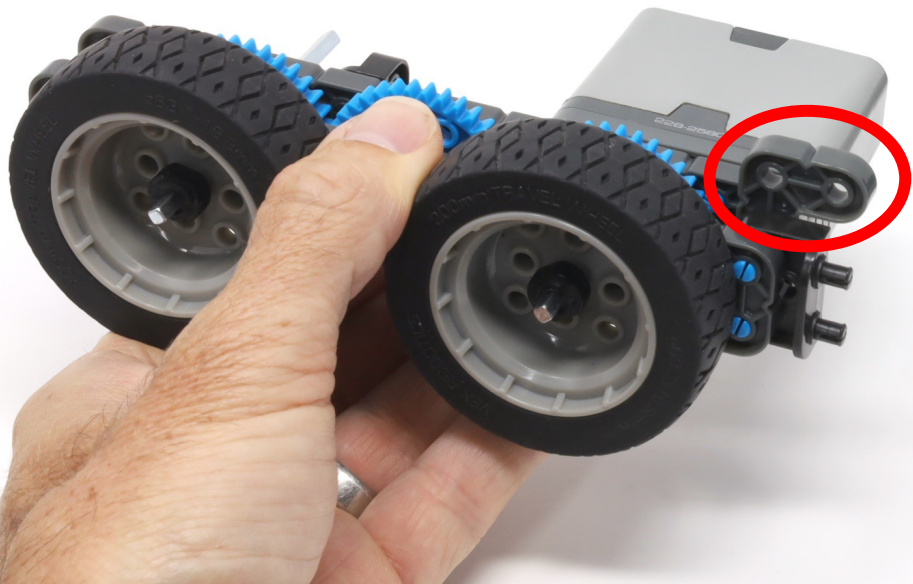


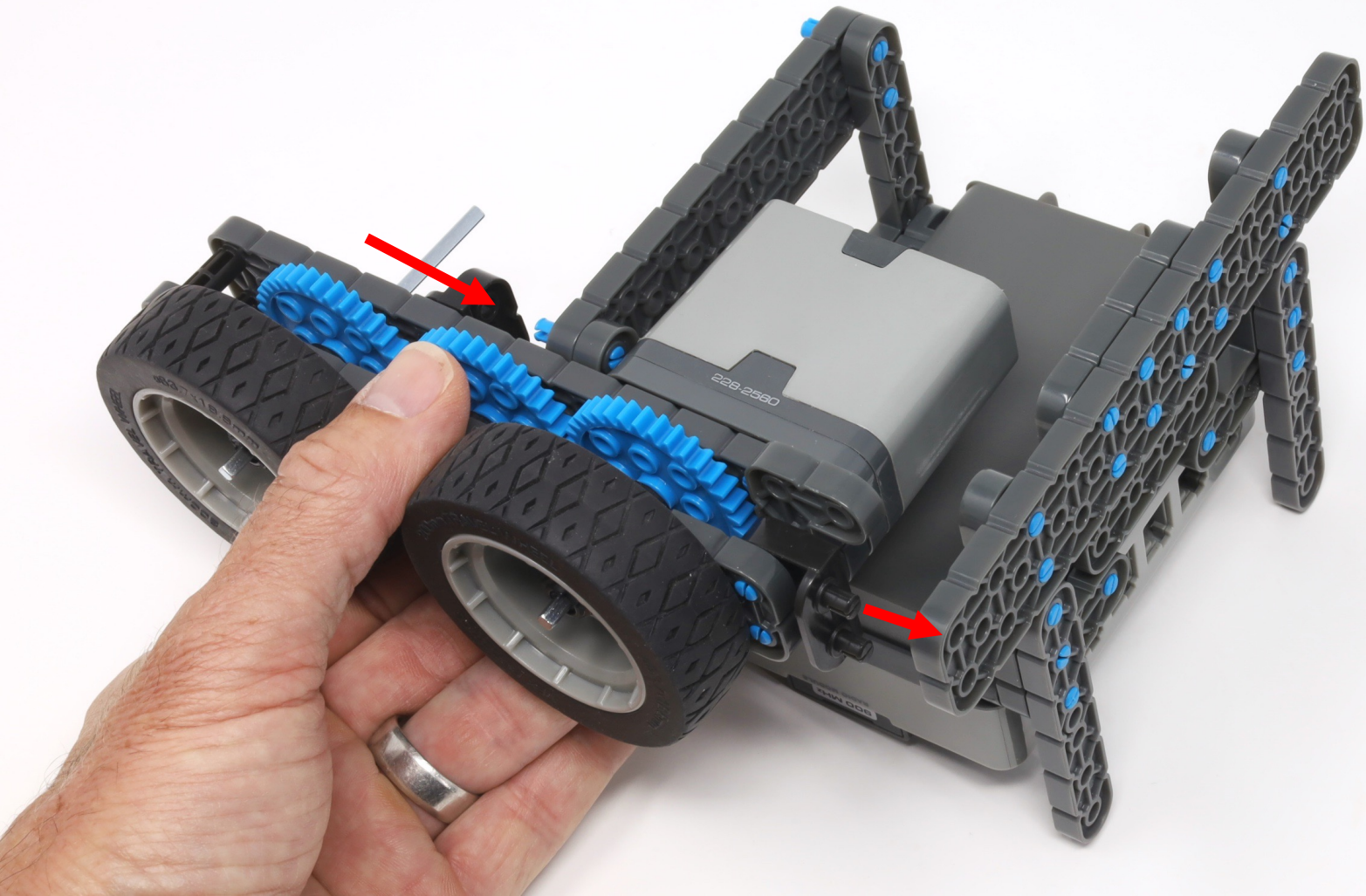


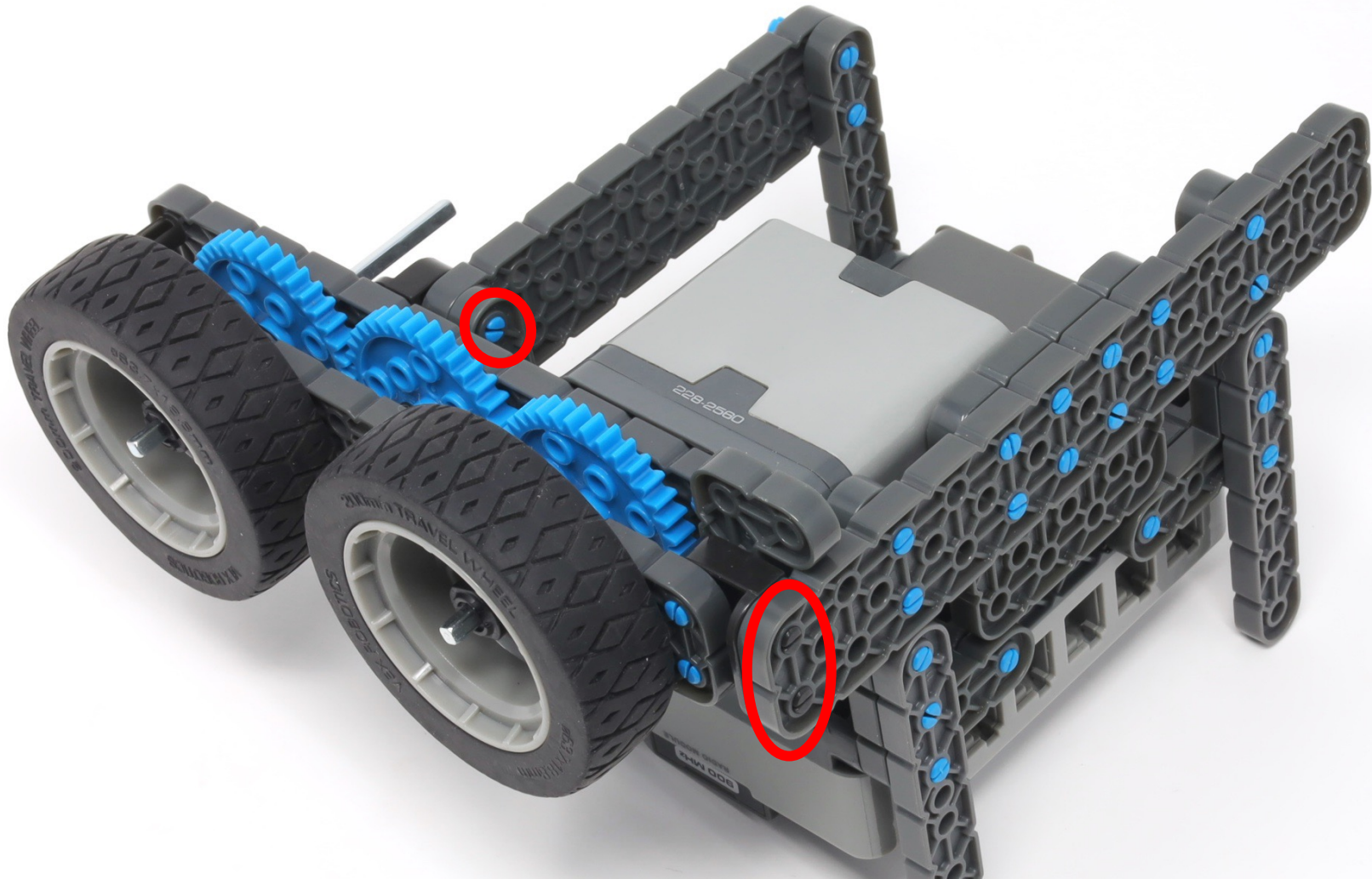


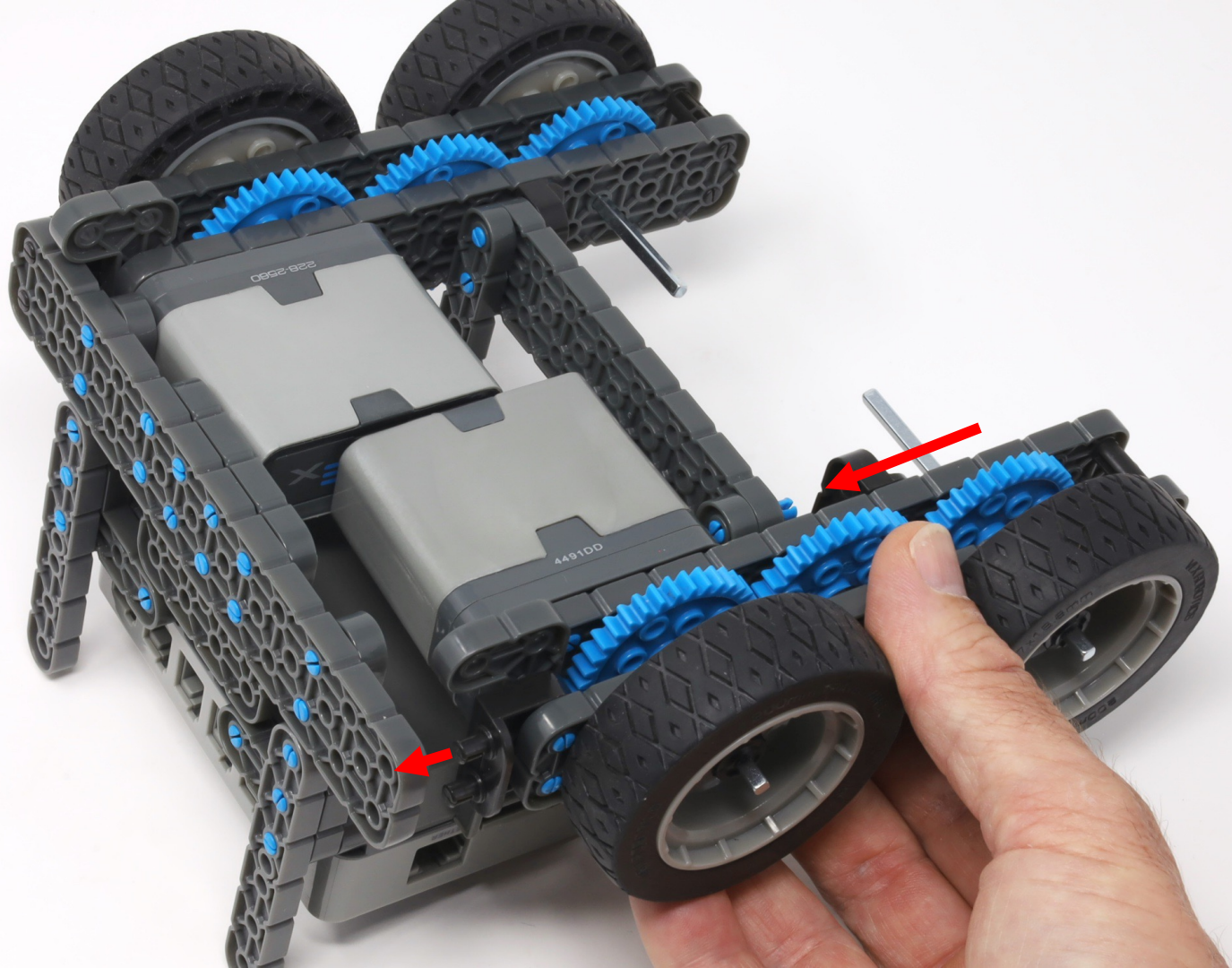


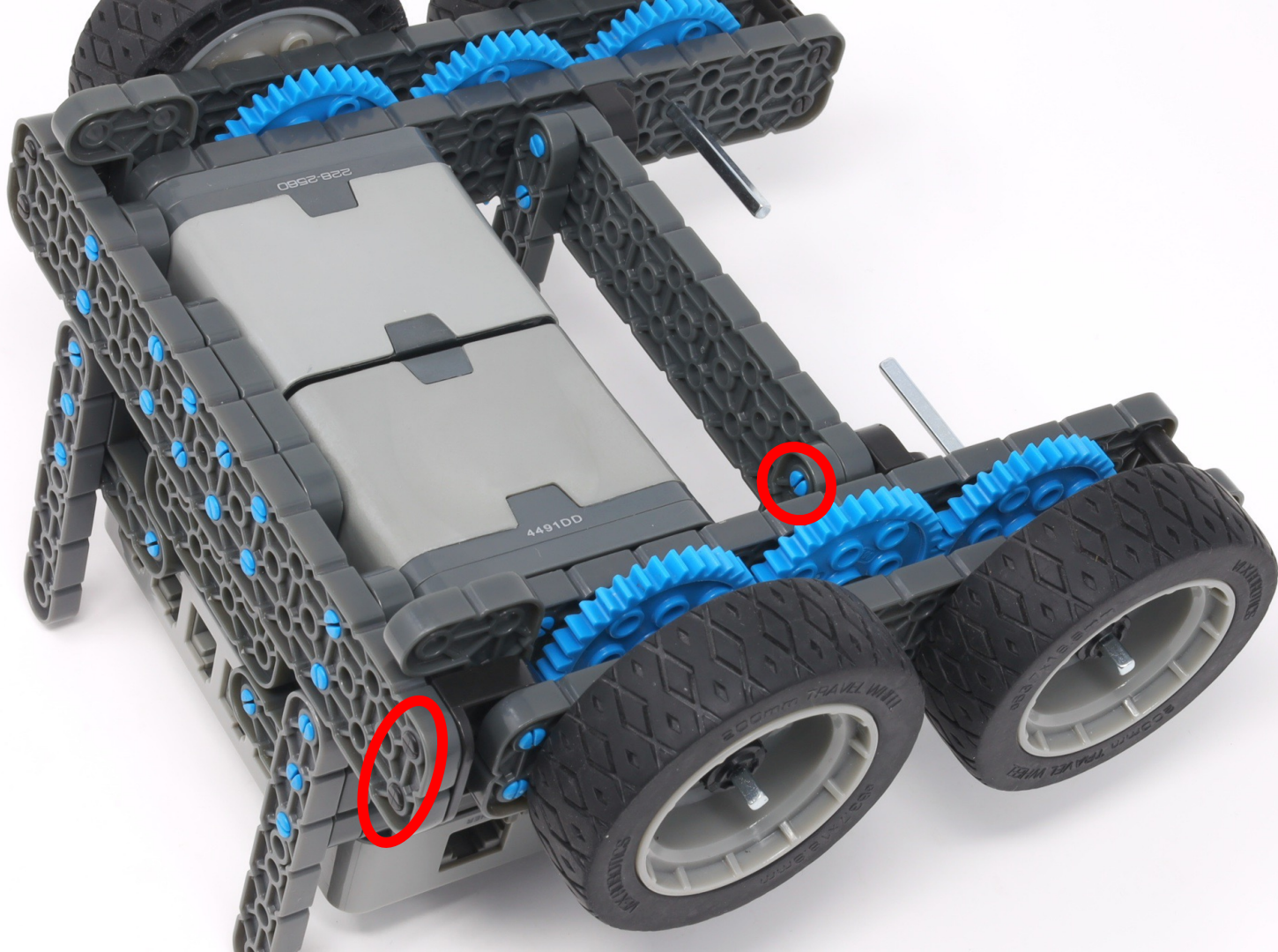




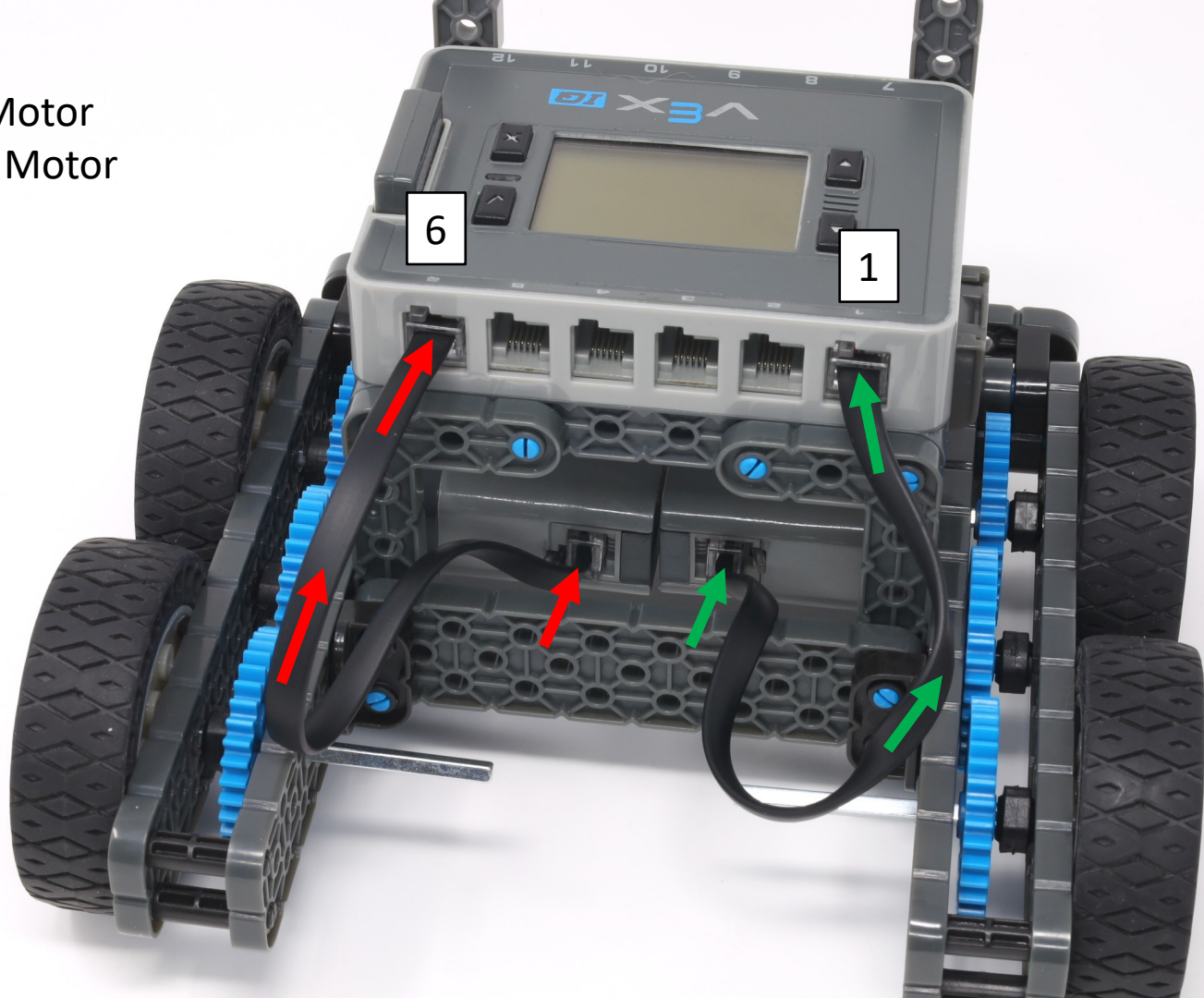








1 = Left Motor
6 = Right Motor





You can push the extra wire into this space.