

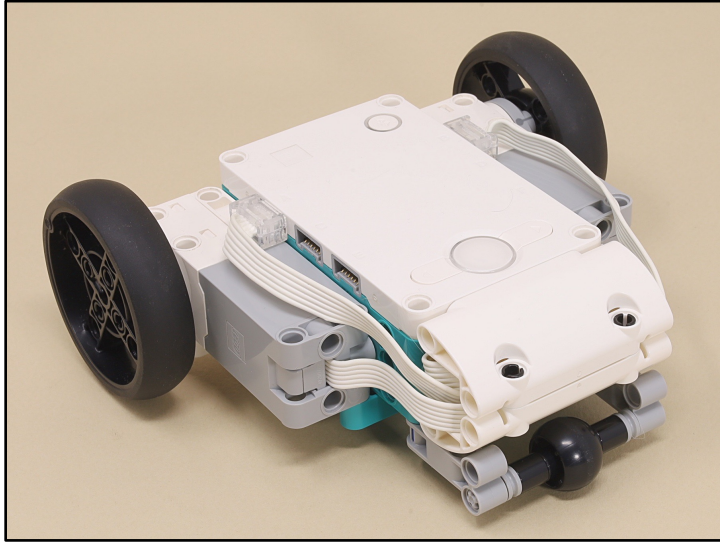
Hammer Car



Scroll for
building
instructions



First, build:



Front Drive Platform

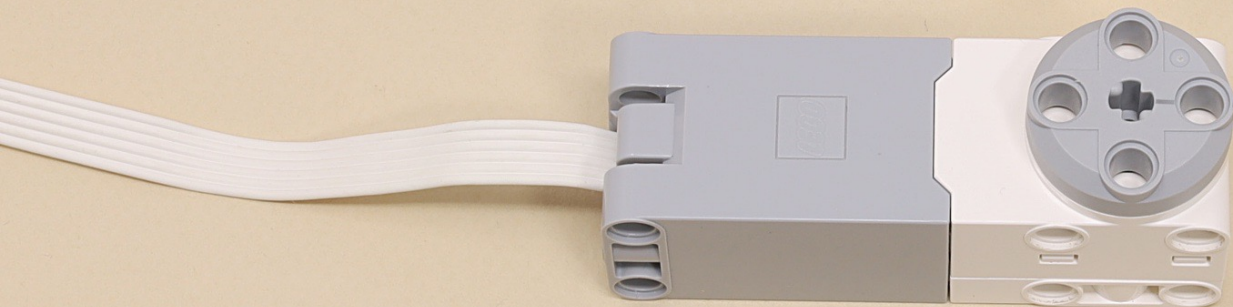
and

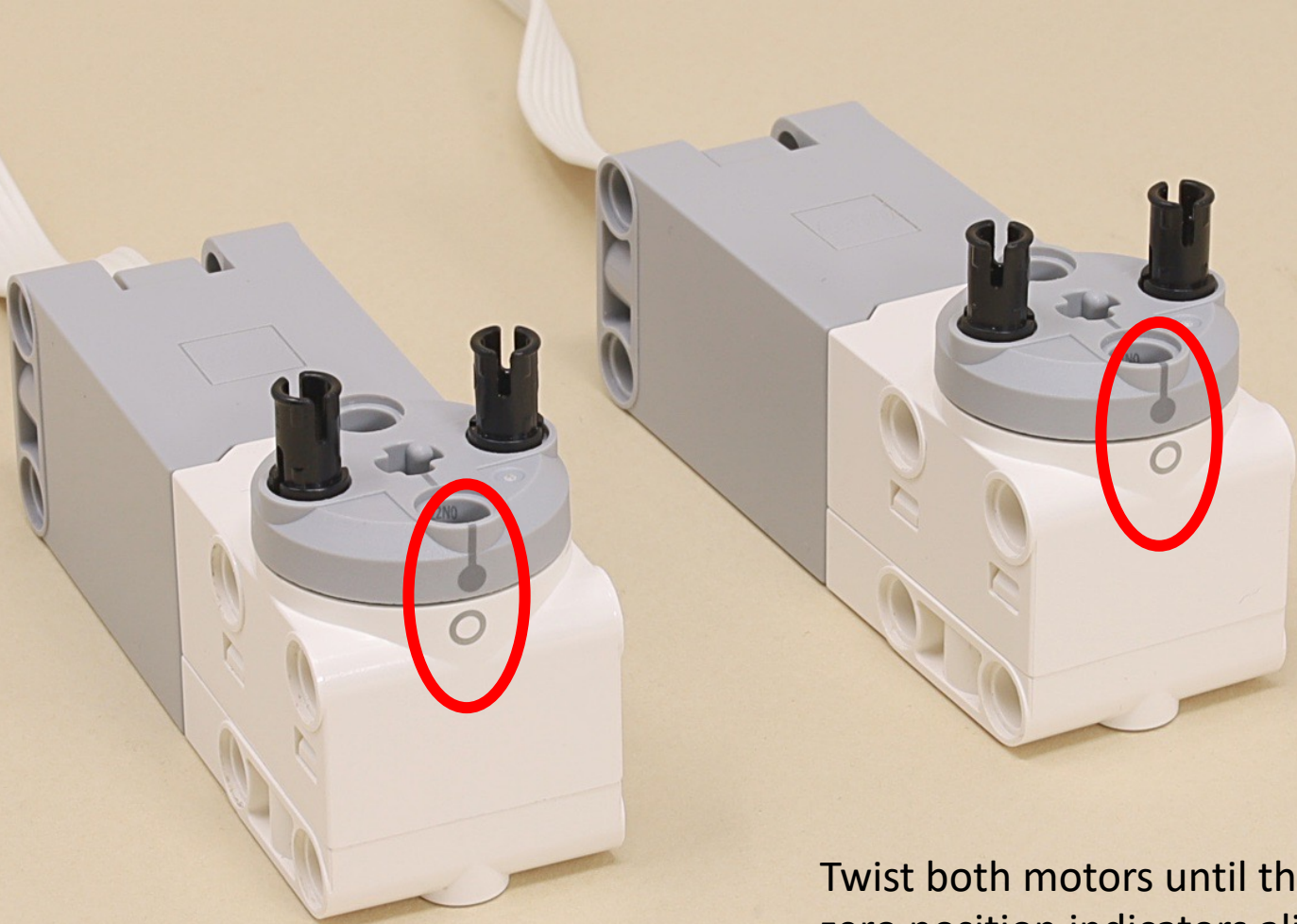


Hammer for Hammer Car

...then continue here for the final assembly of the Hammer Car







Twist both motors until the zero position indicators align.



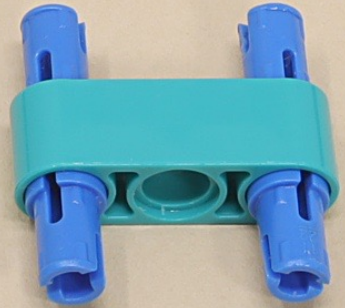
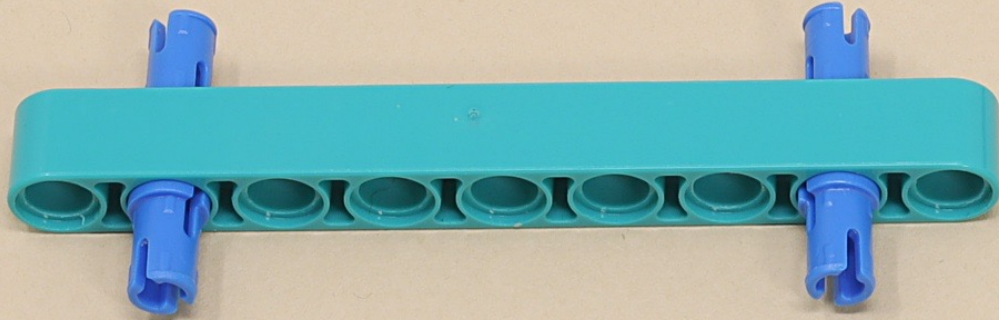
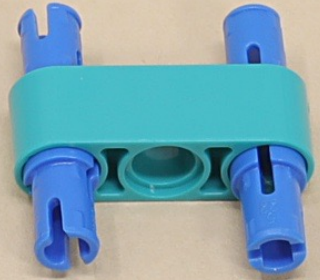
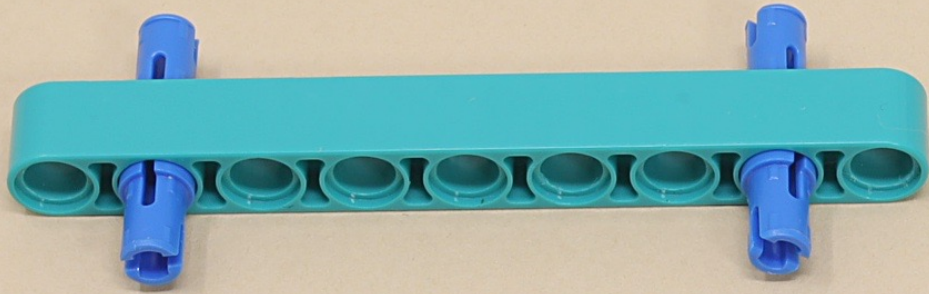
9

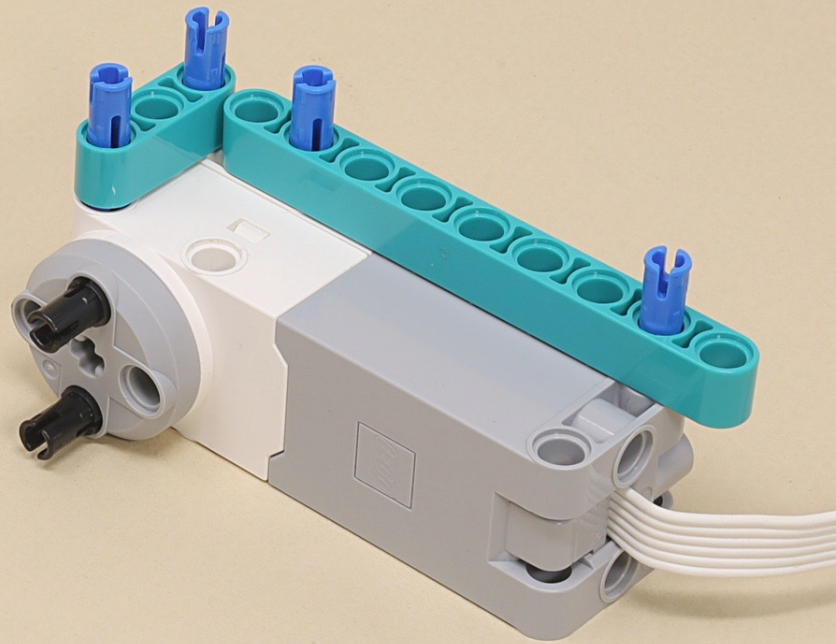
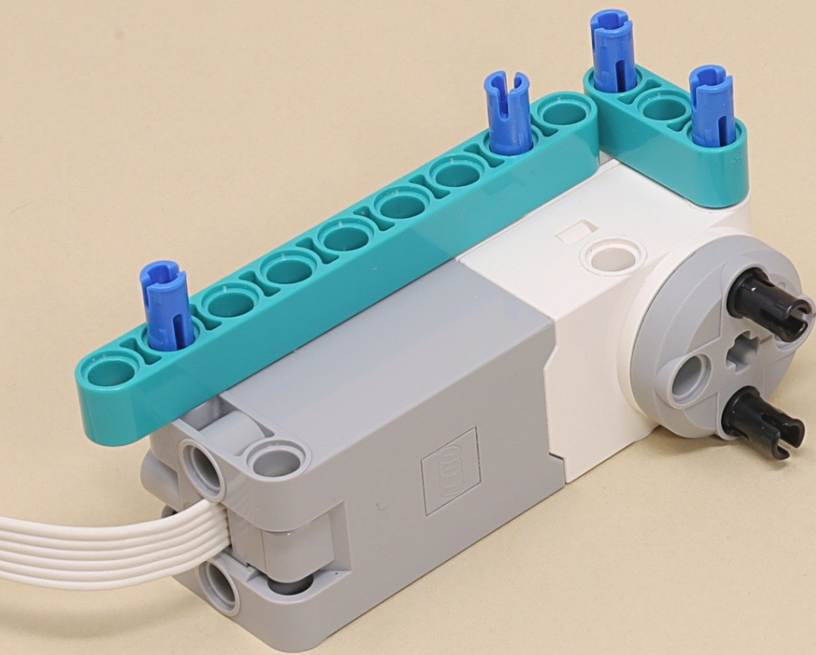


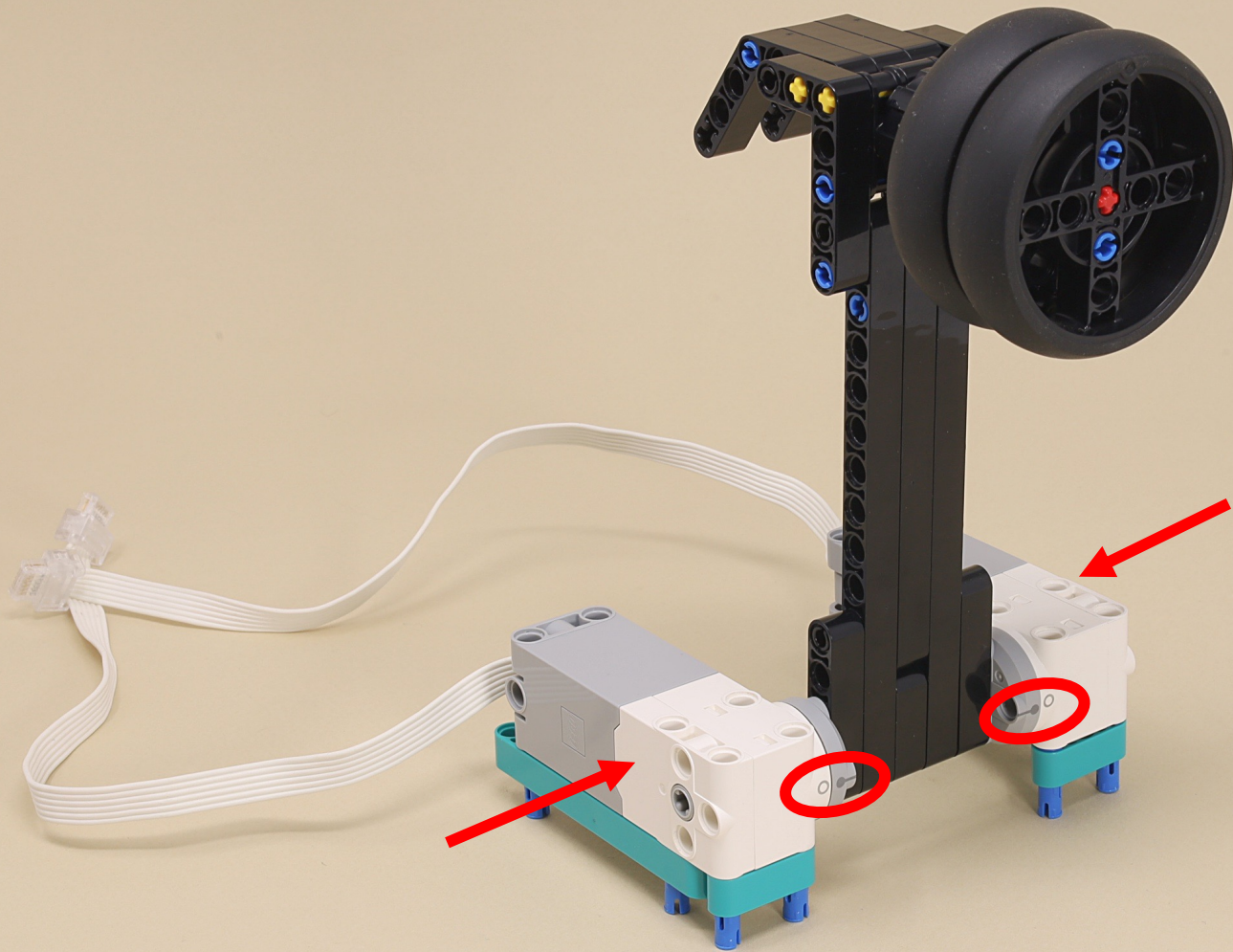
9



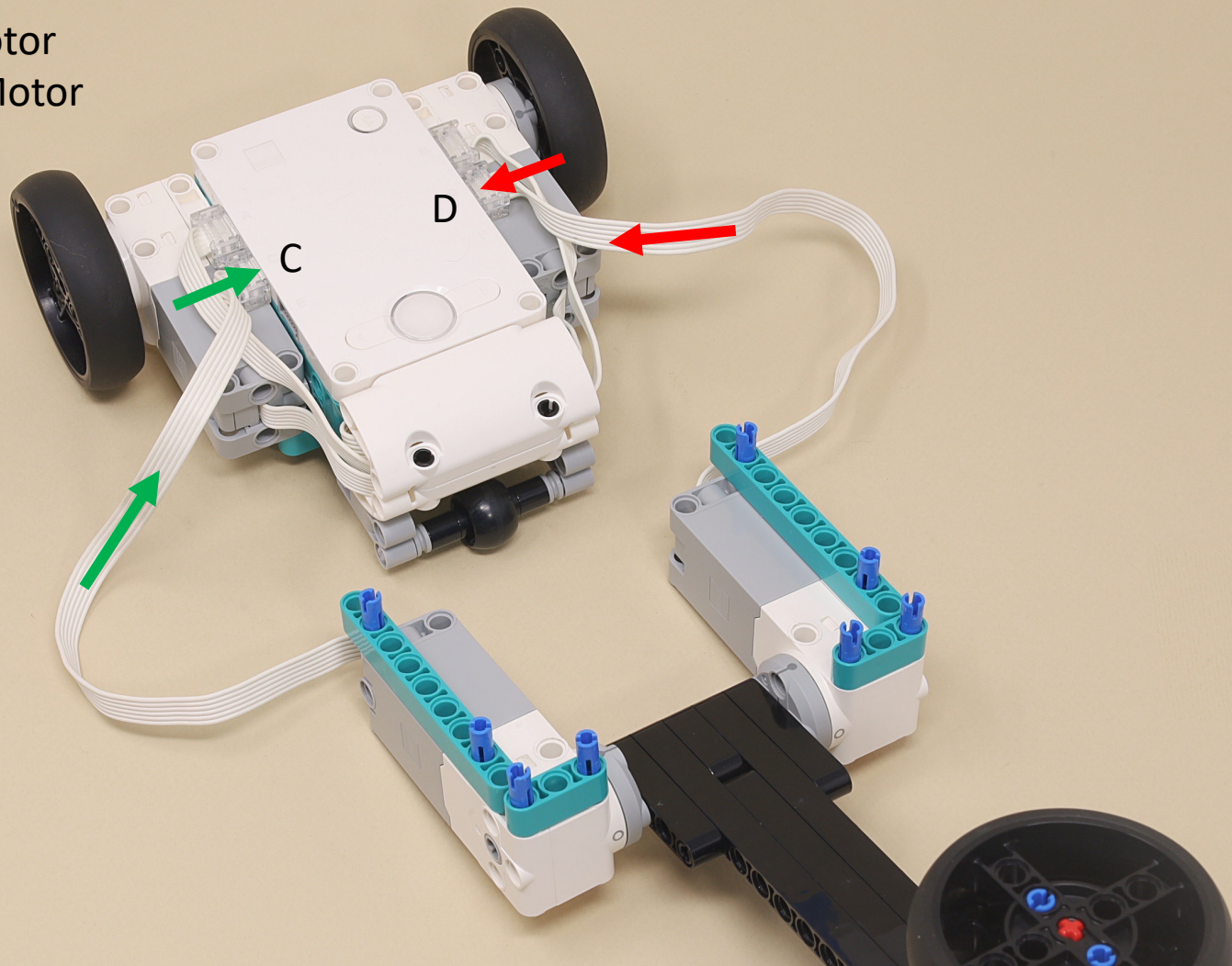
(8 x)

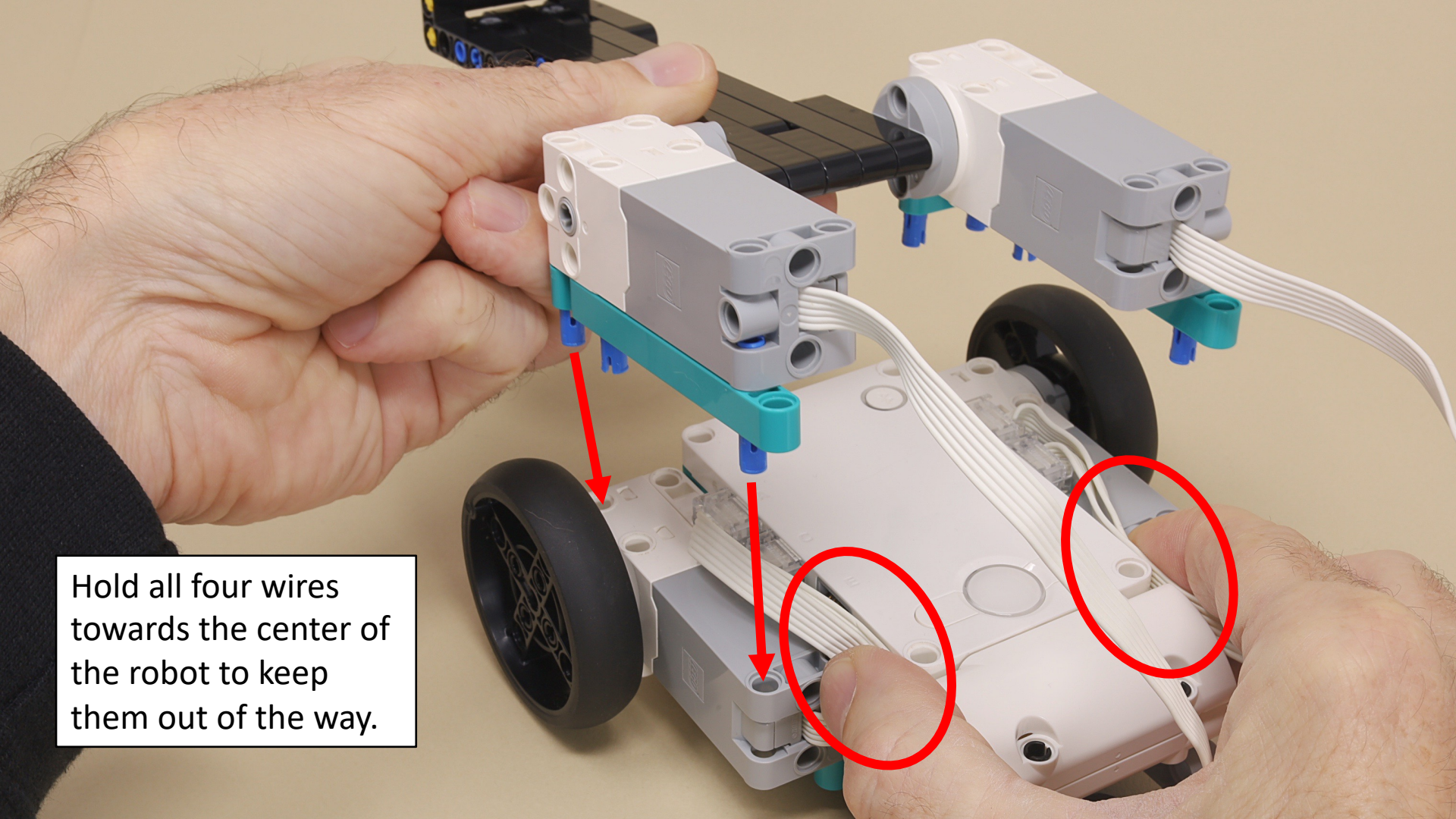




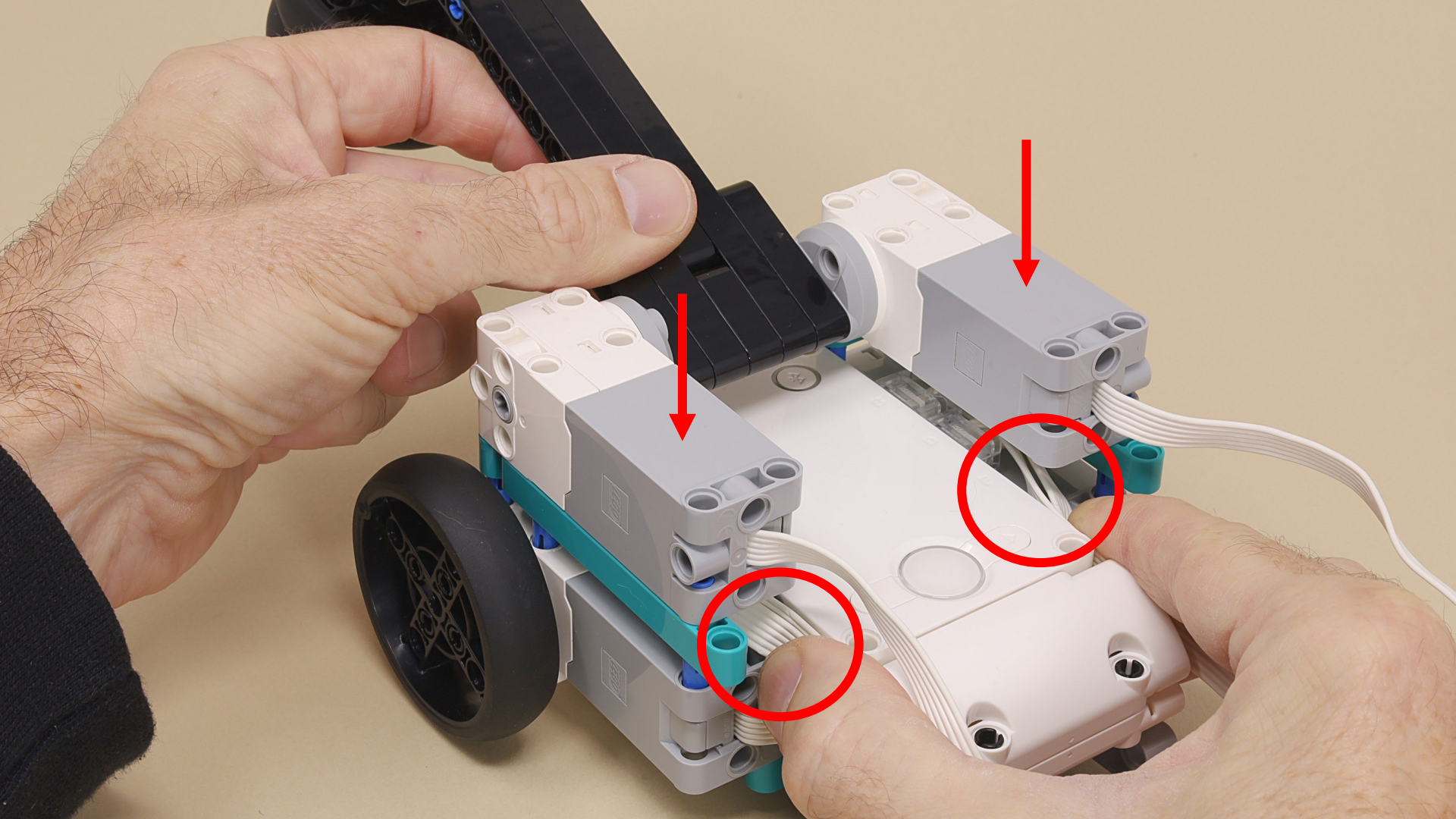


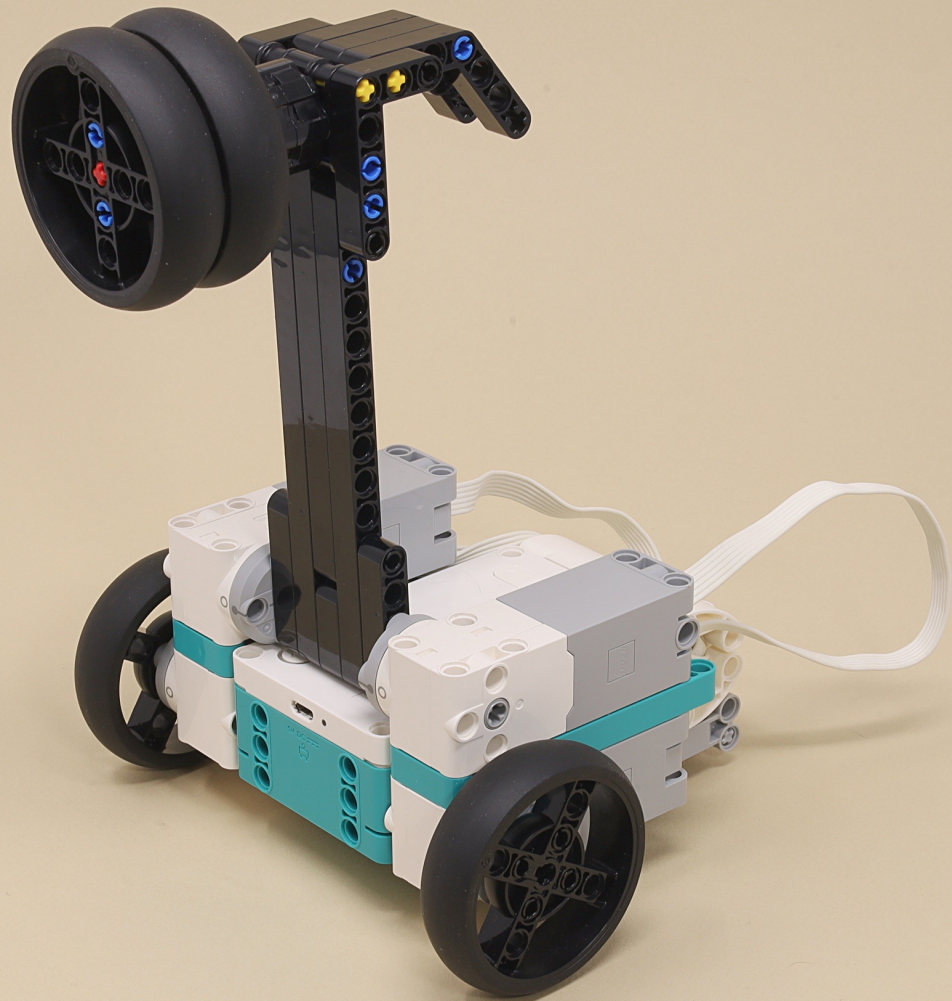
C = Left Hammer Motor
D = Right Hammer Motor





Hold all four wires towards the center of the robot to keep them out of the way.

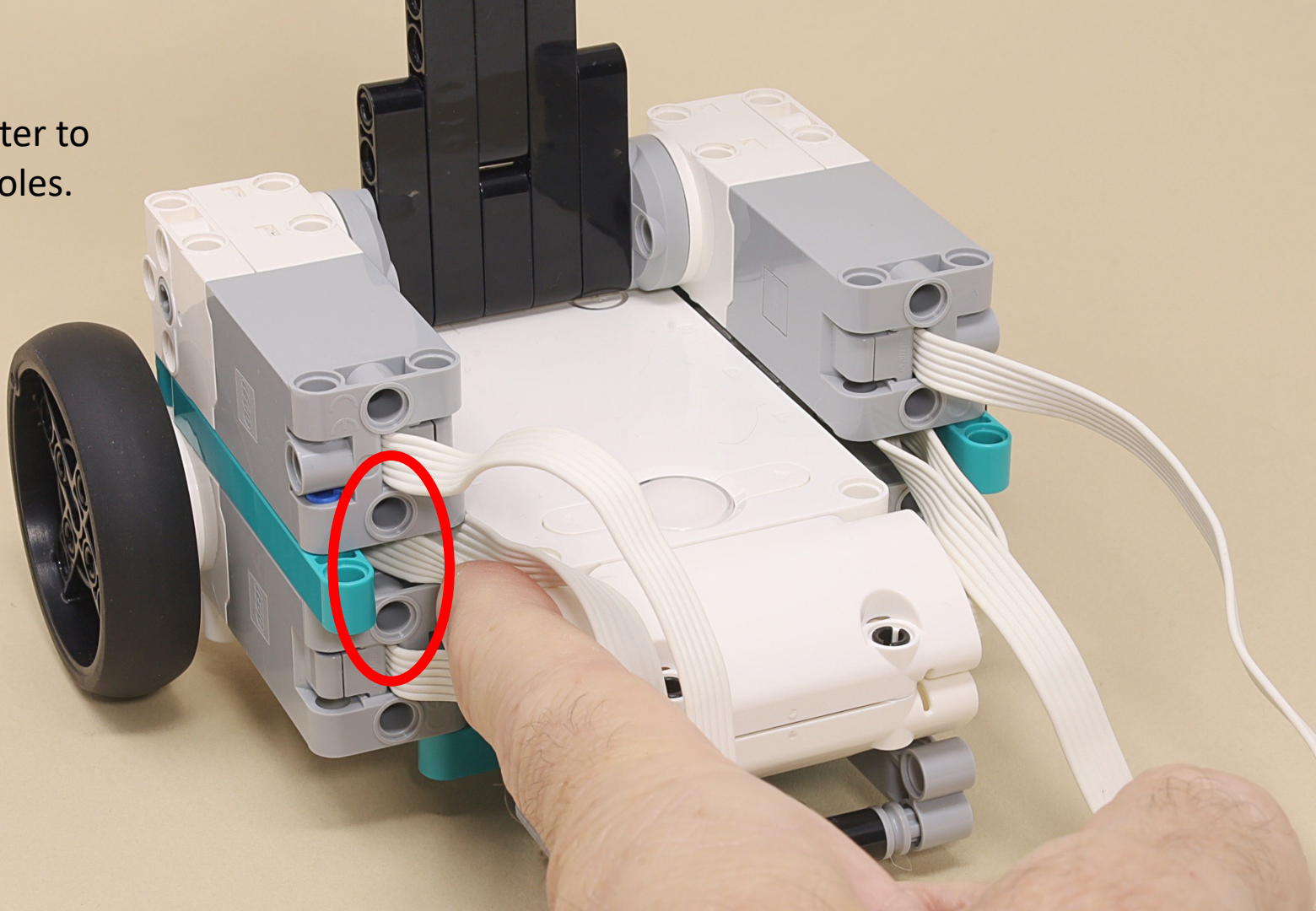


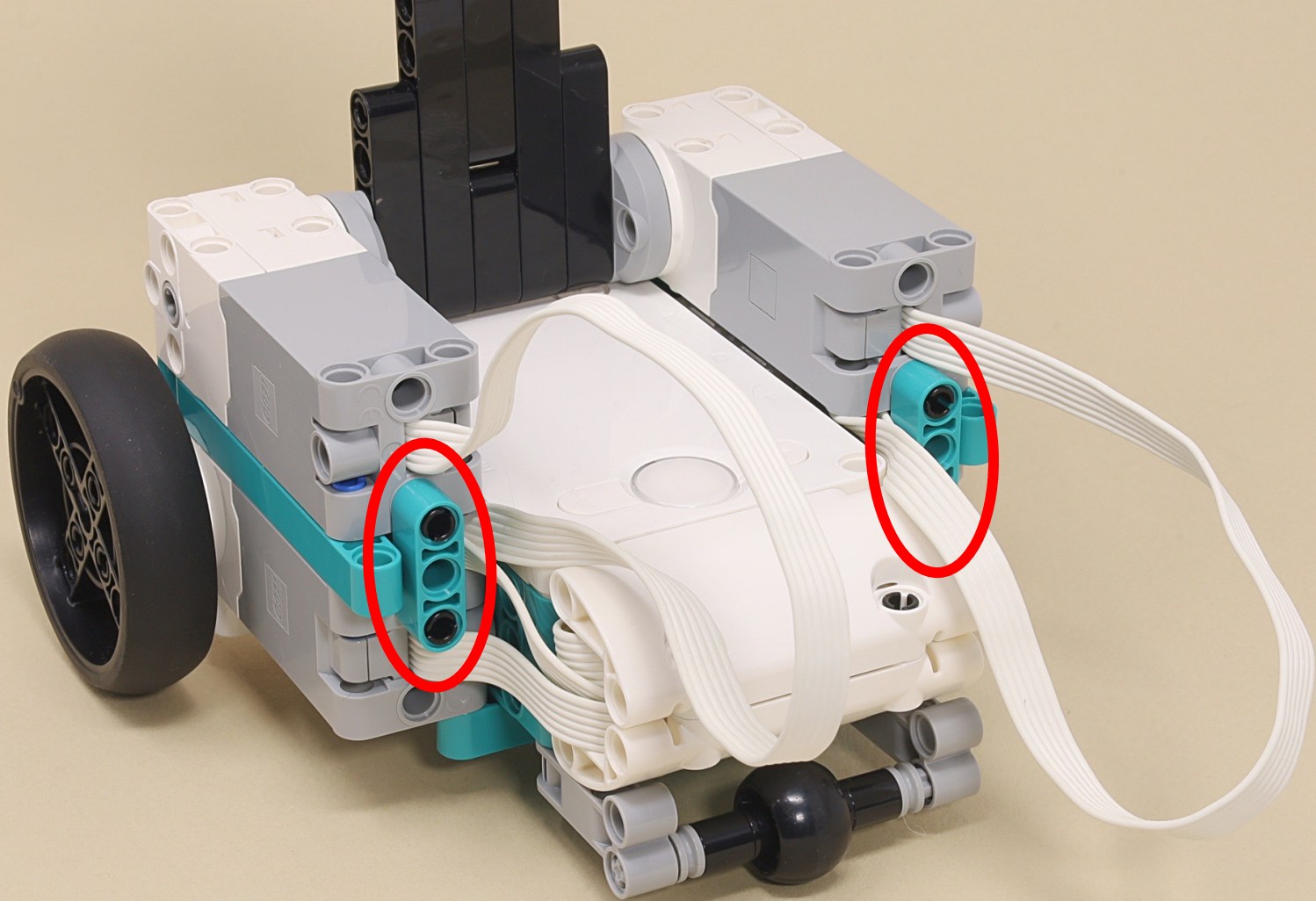






Push the wires
toward the center to
expose these holes.





You can fold and stuff the extra wire lengths into this space.

