

# Explorer

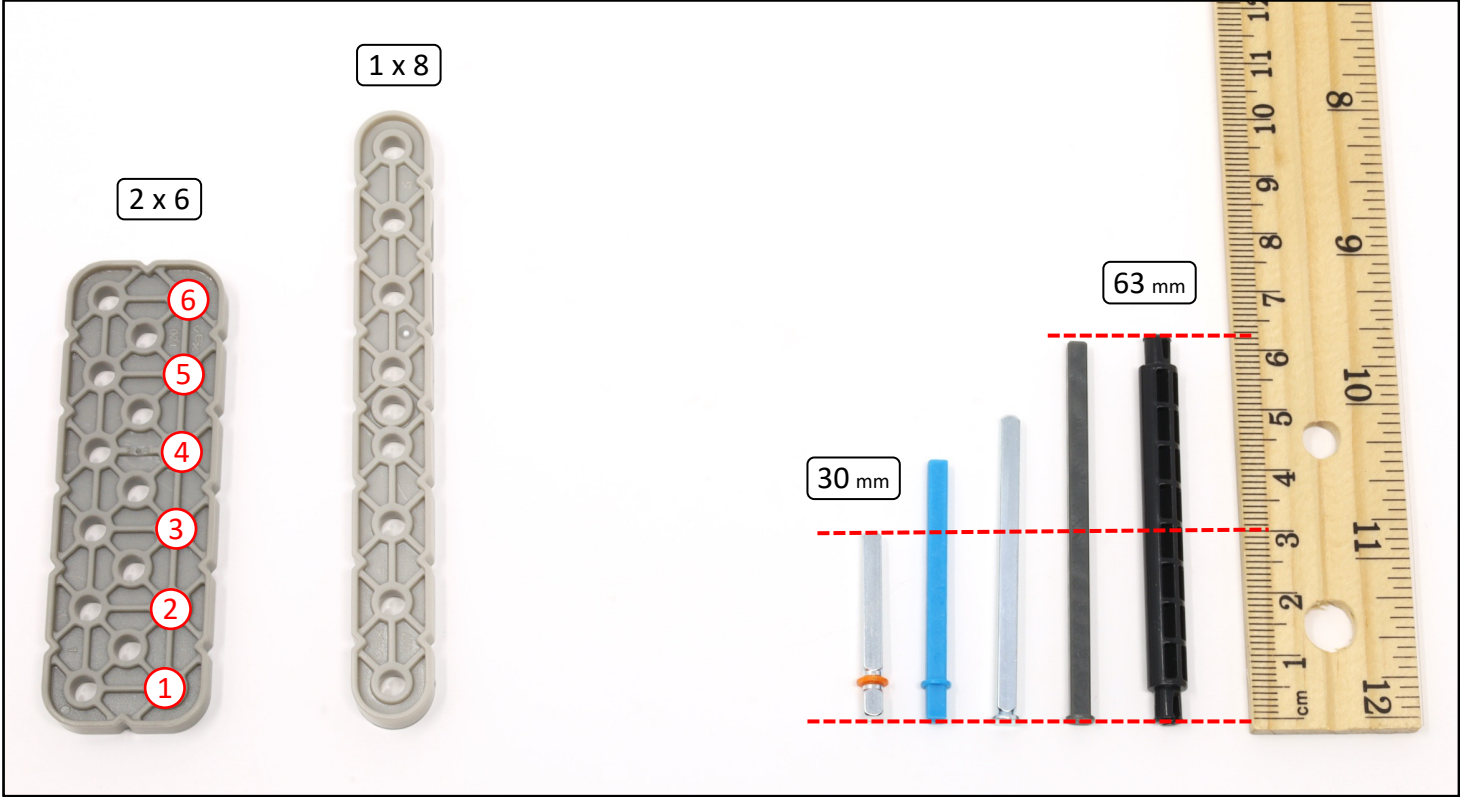


**IQ** 2<sup>nd</sup> gen

Scroll for  
building  
instructions

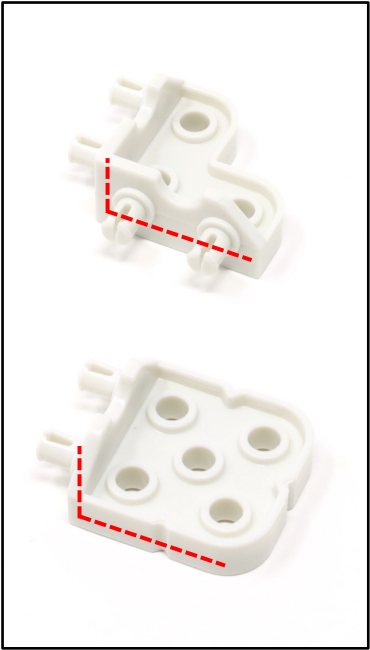


# Parts Sizing Guide



Count holes on beams

Use a metric ruler for axles and standoffs



Watch orientation of connectors

First, build:



Bumper Car

...then continue here to complete the Explorer





2 x 10



2 x 10



2 x 8



30 mm



(6 x)

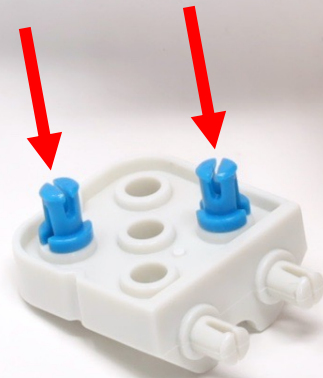


(6 x)



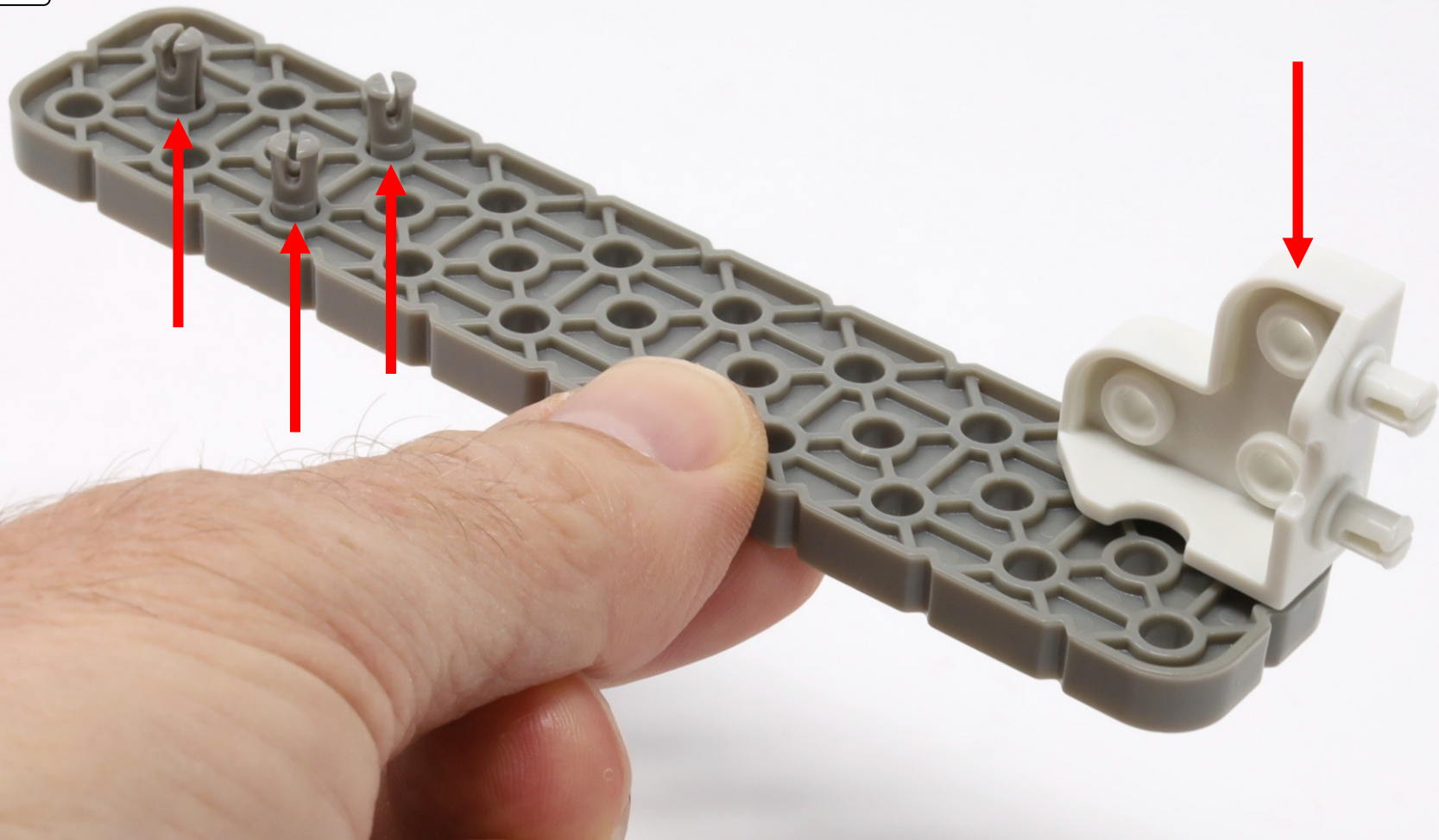
300 mm

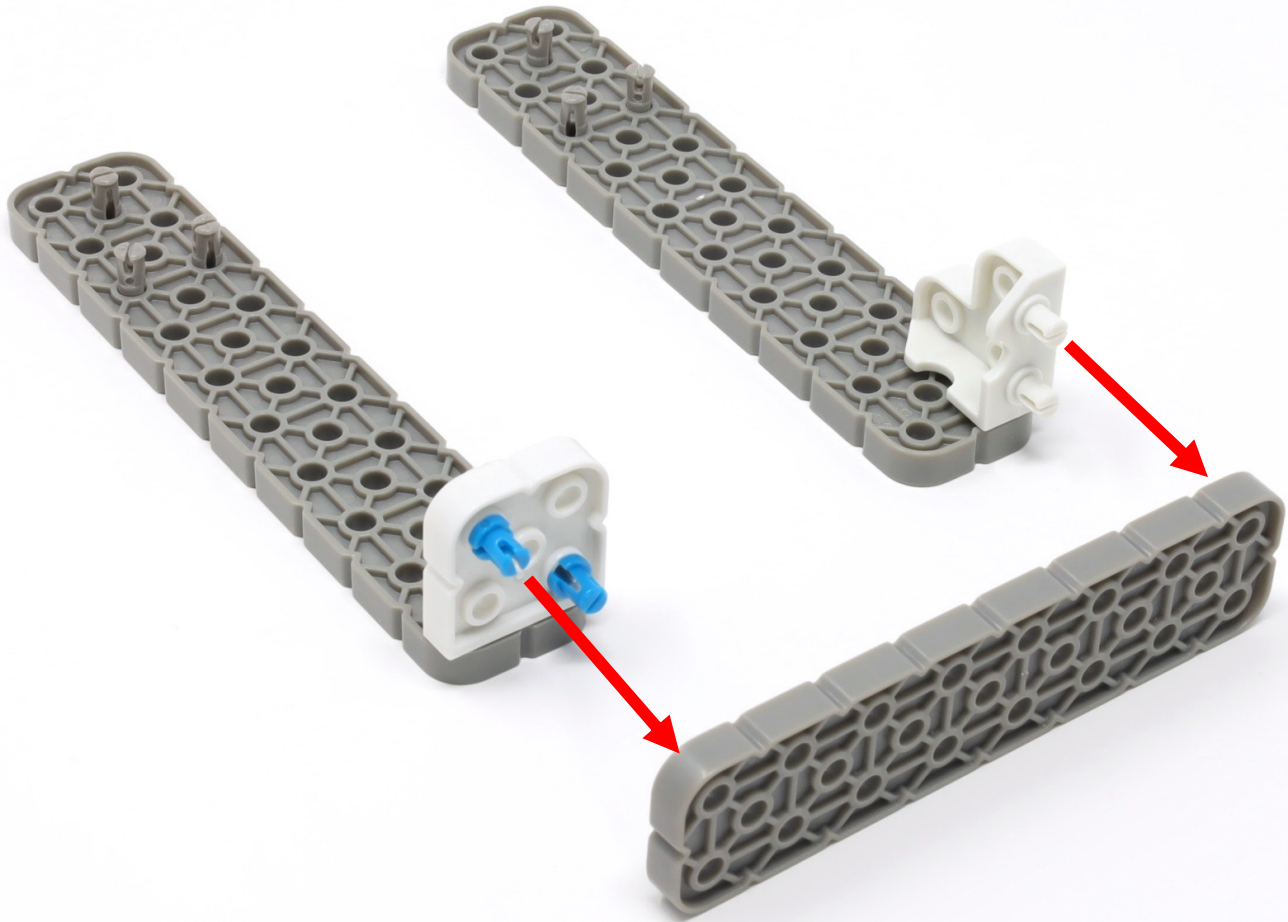
2 x 10





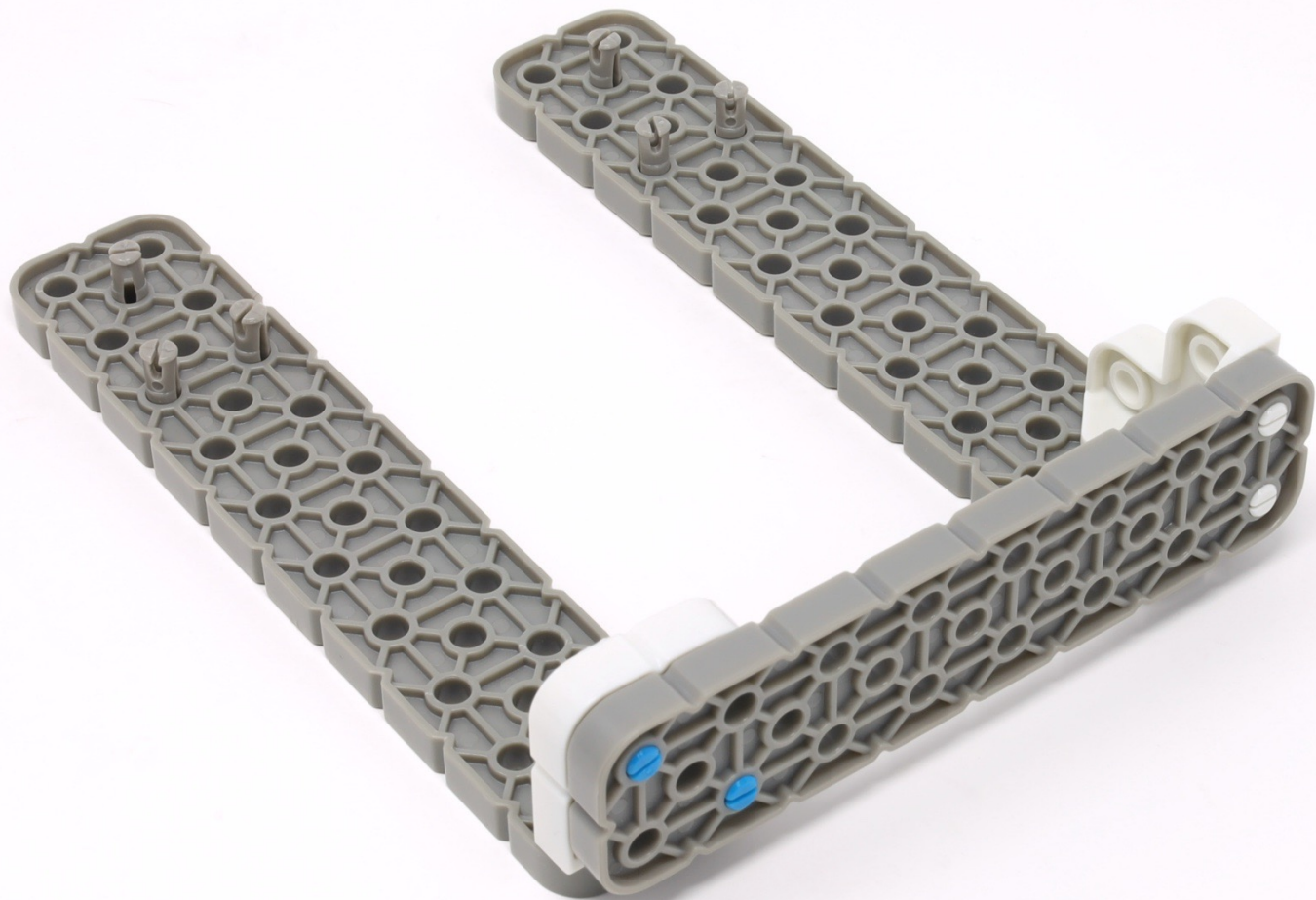
2 x 10



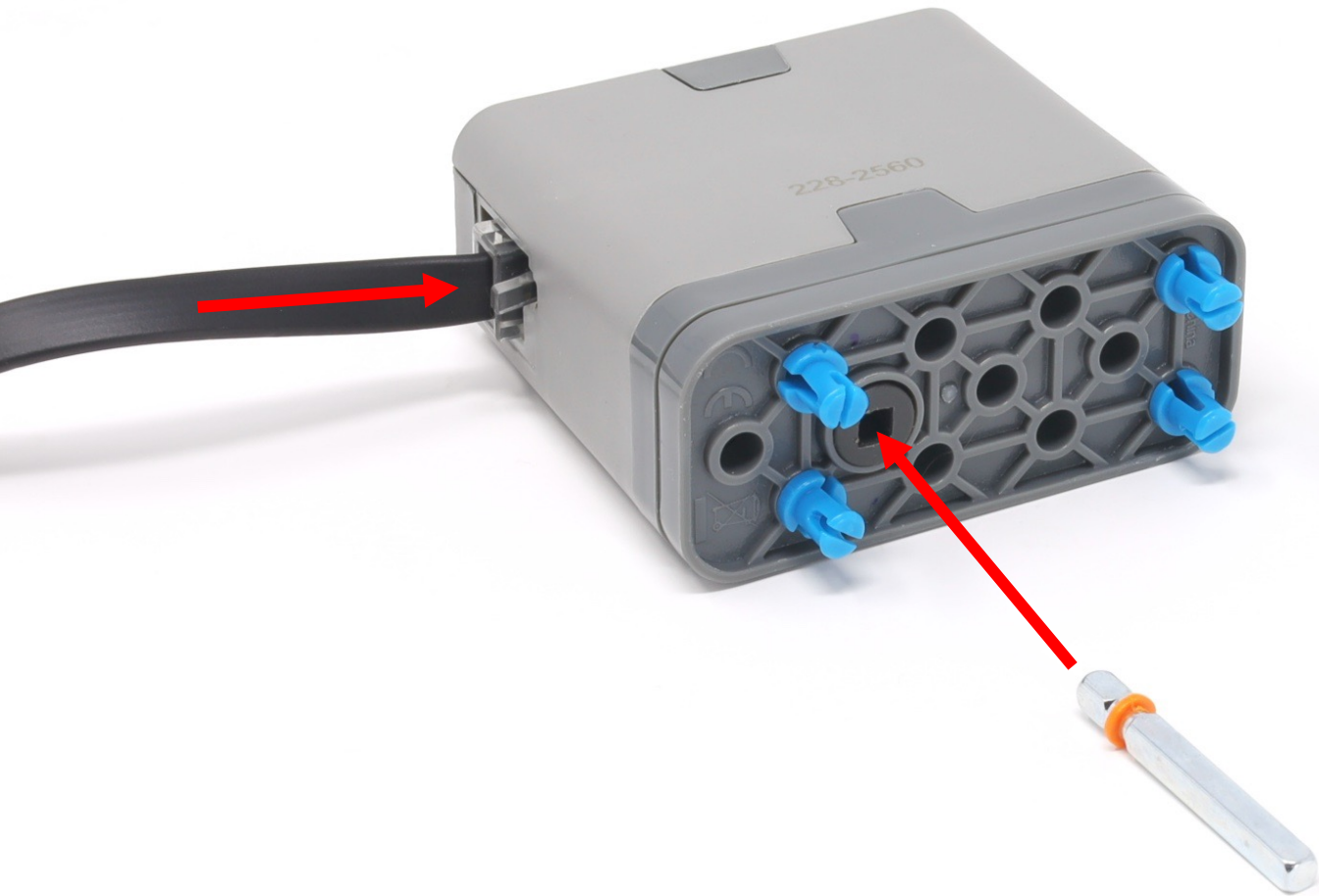


2 x 8



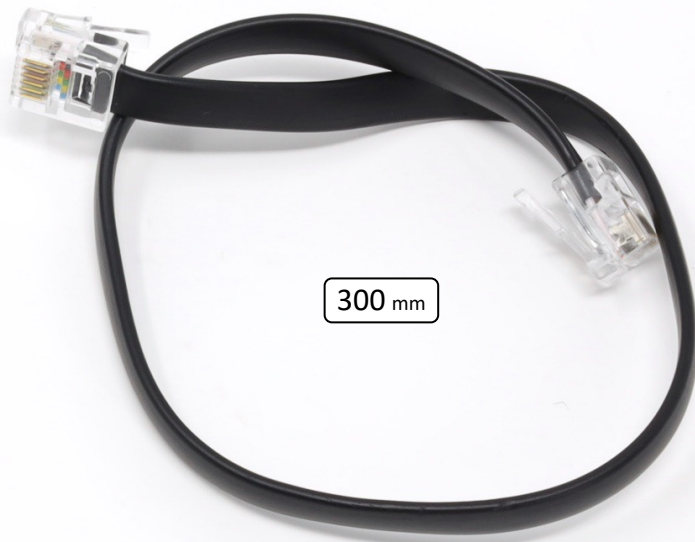


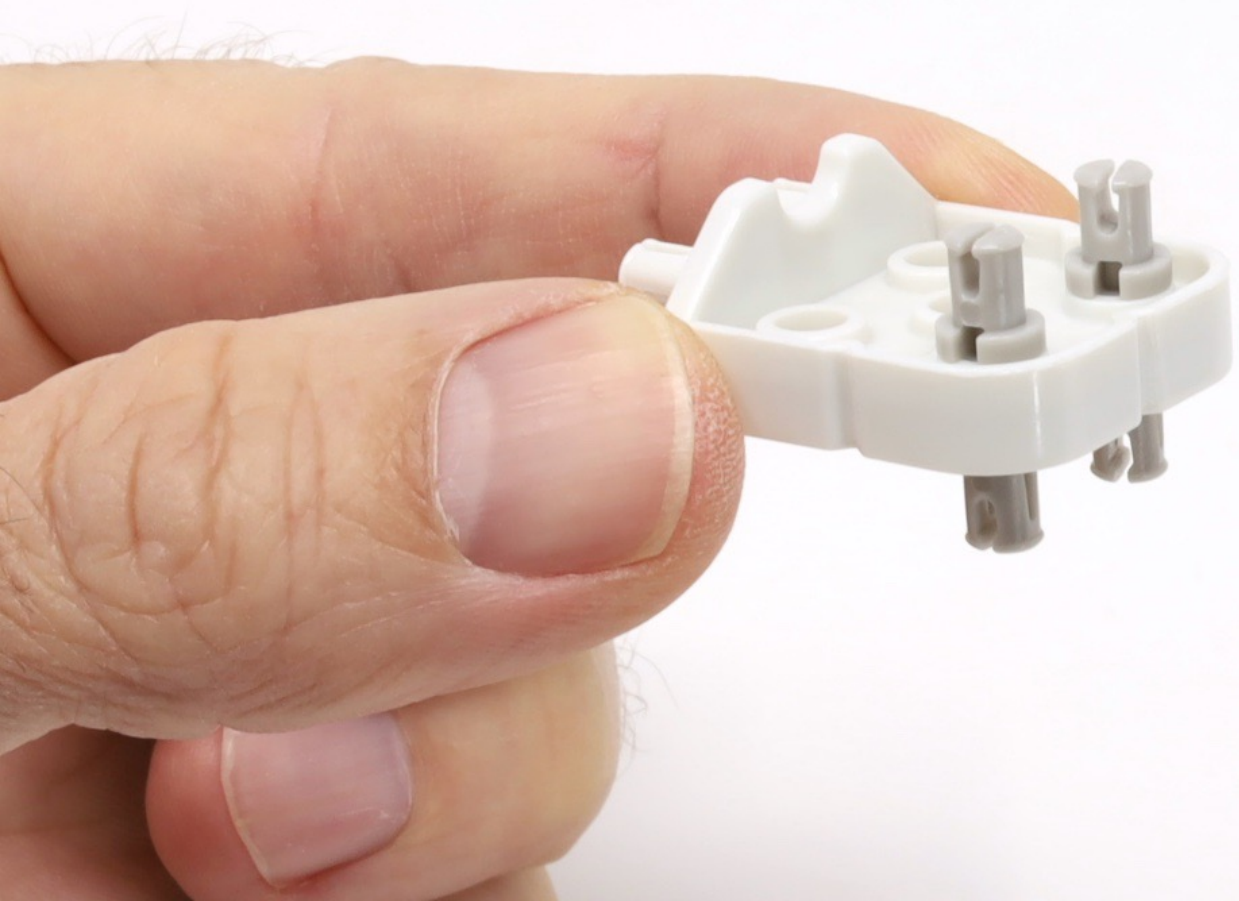


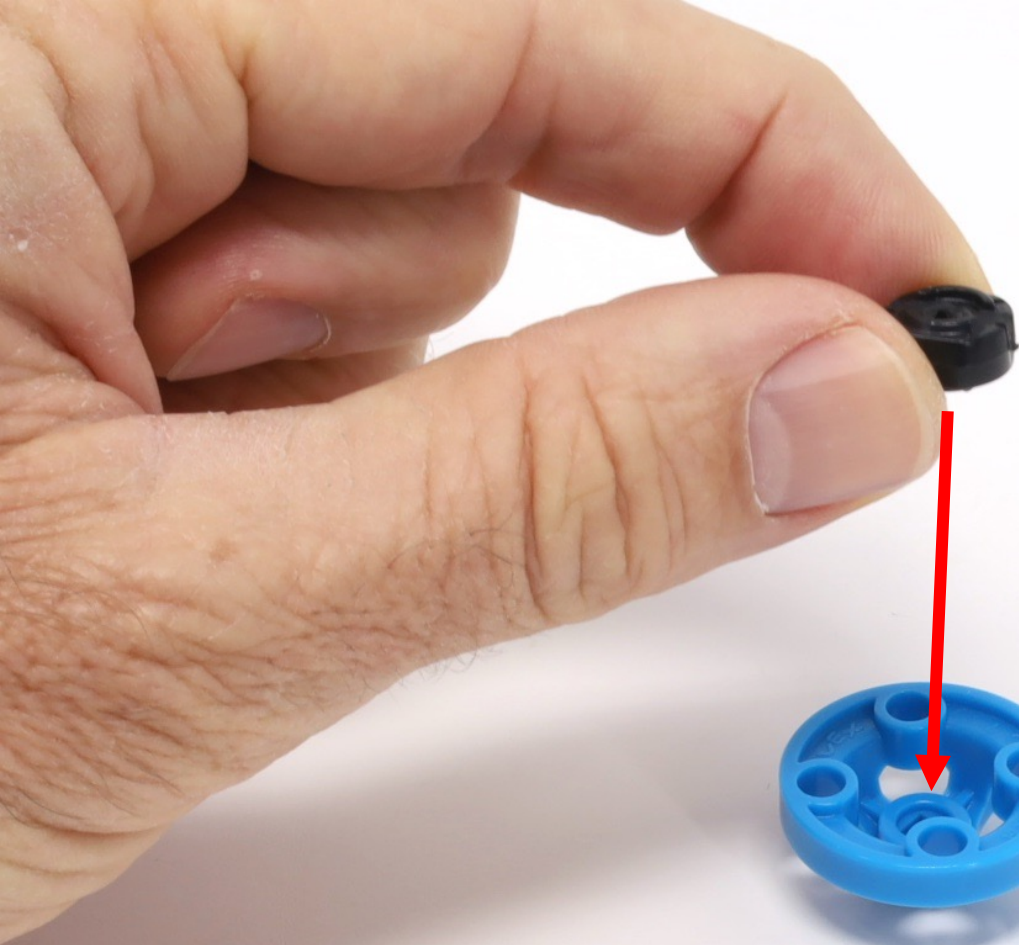


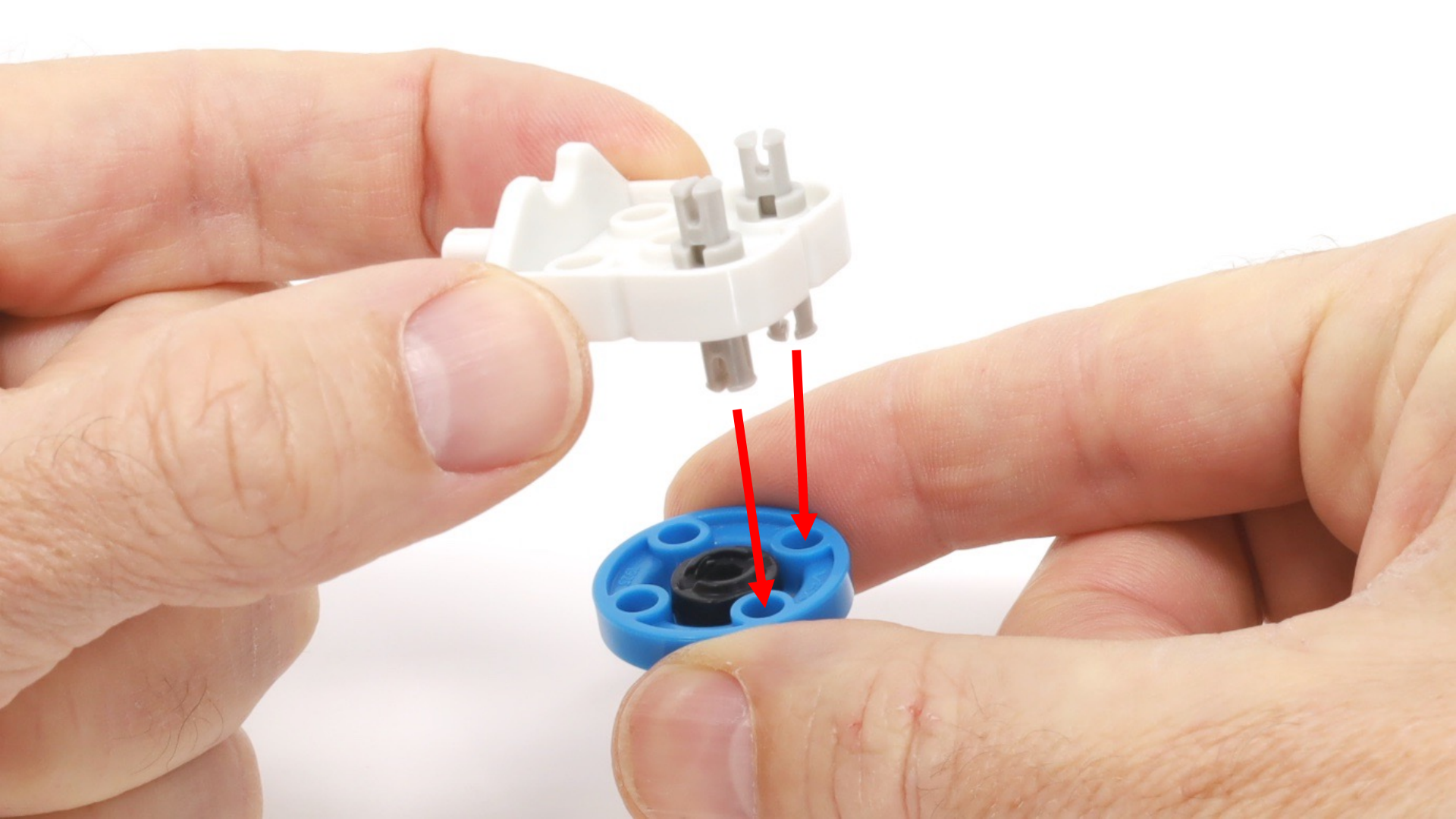
228-2560





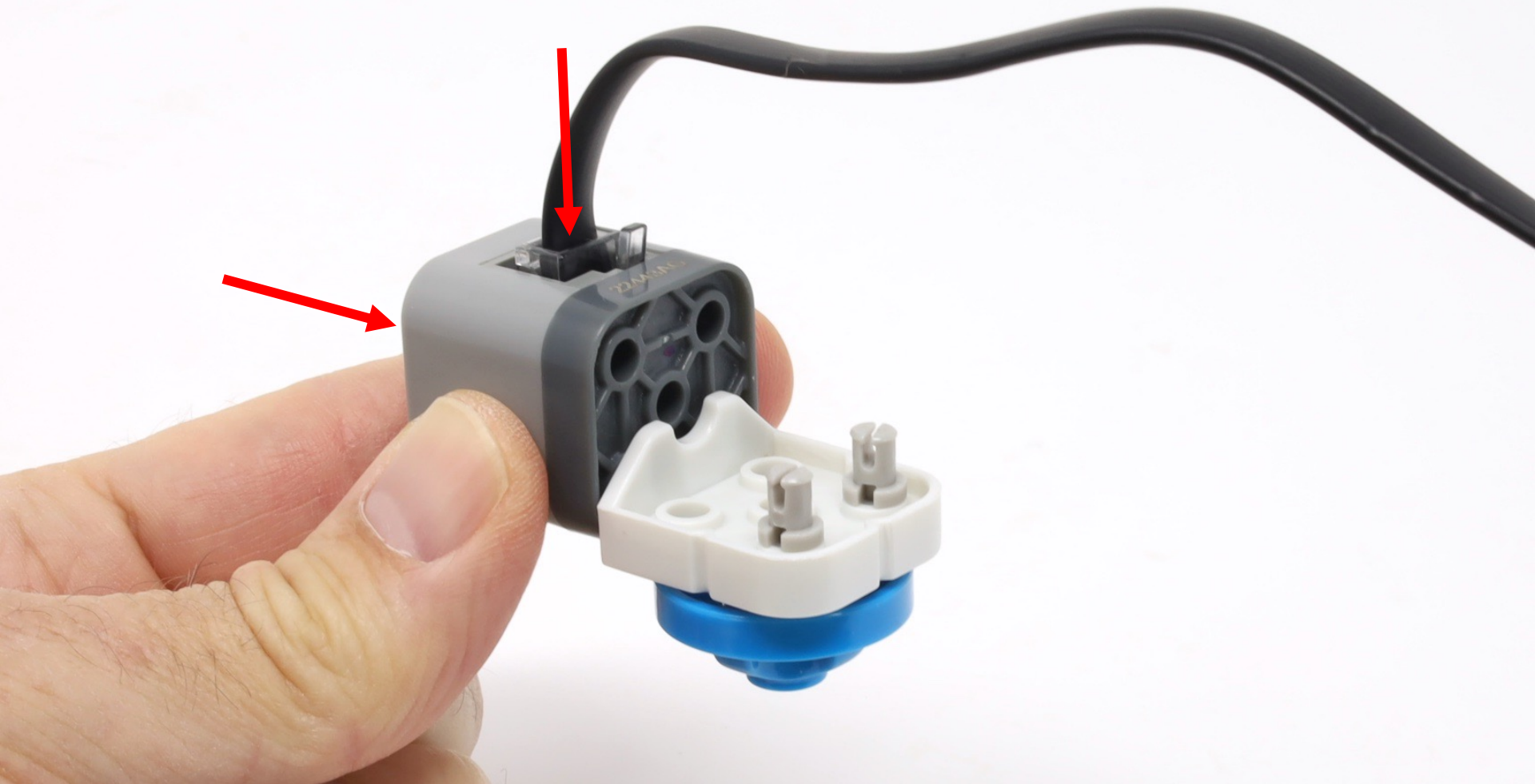








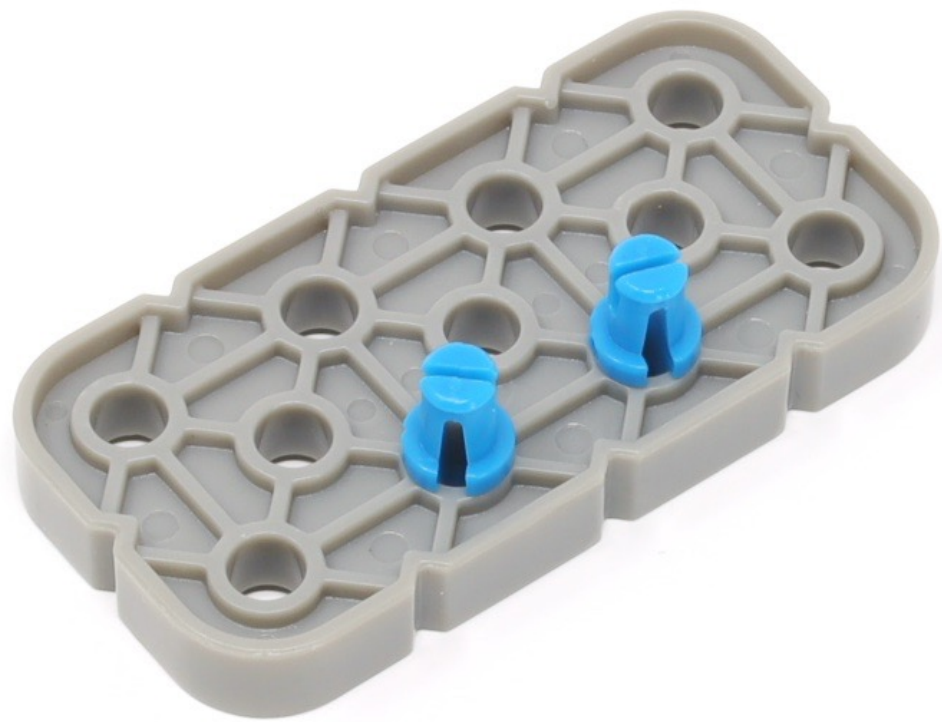


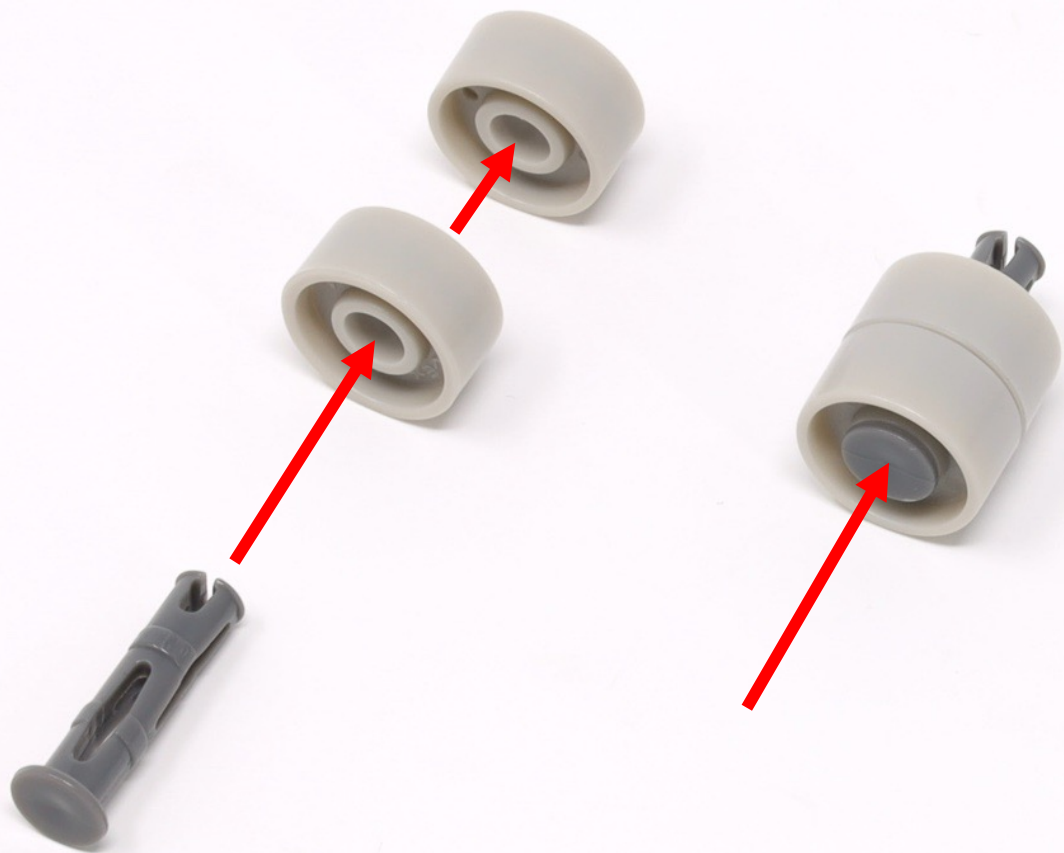


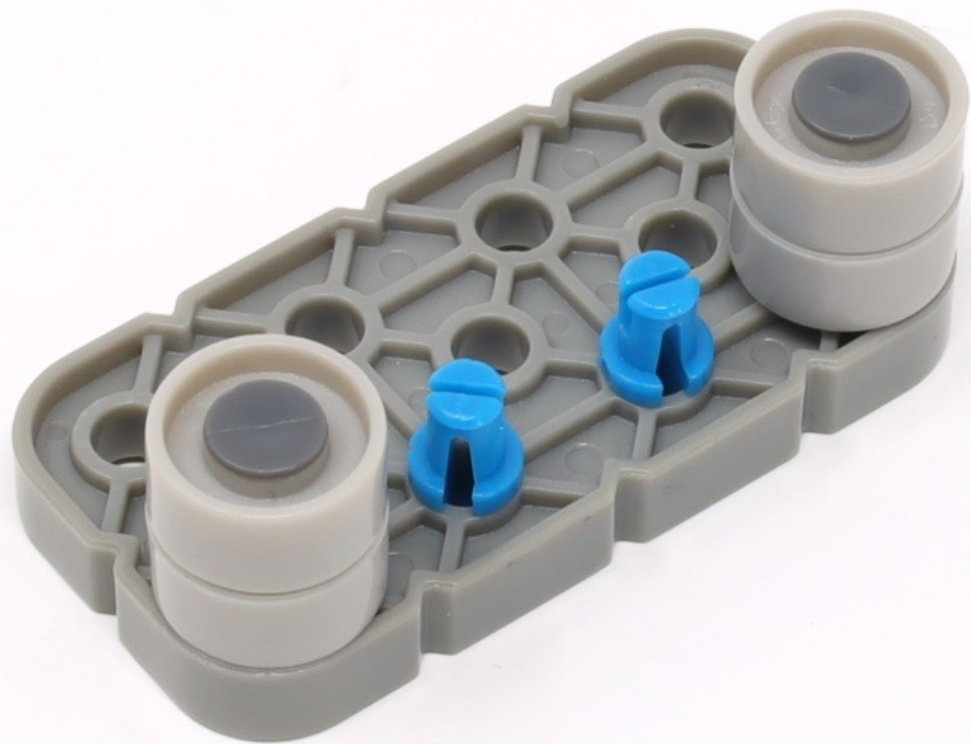


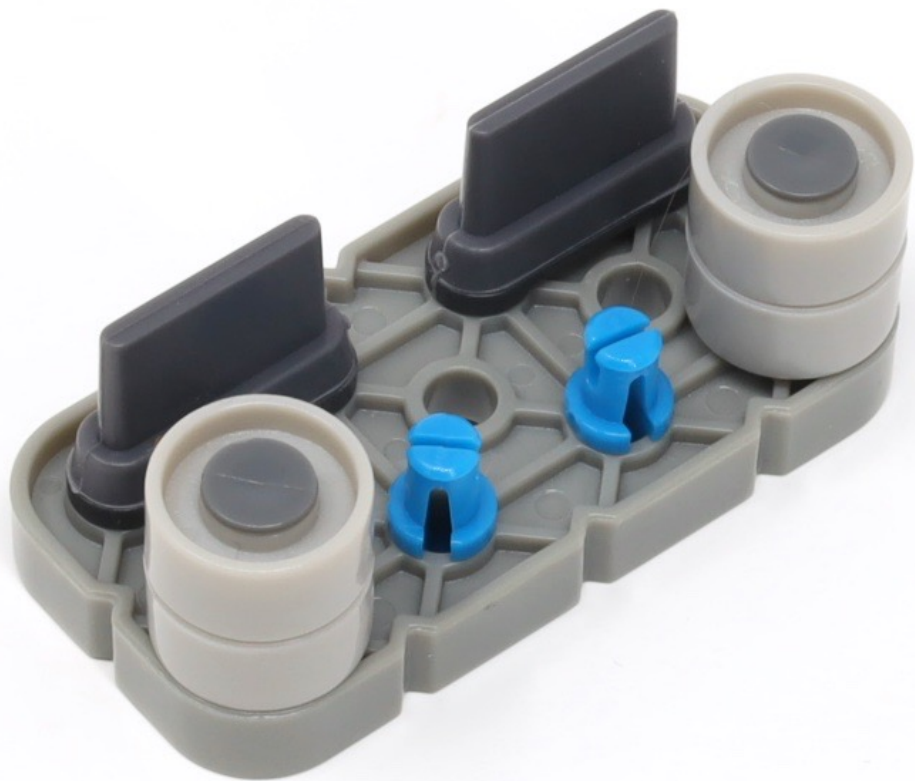
2 x 4





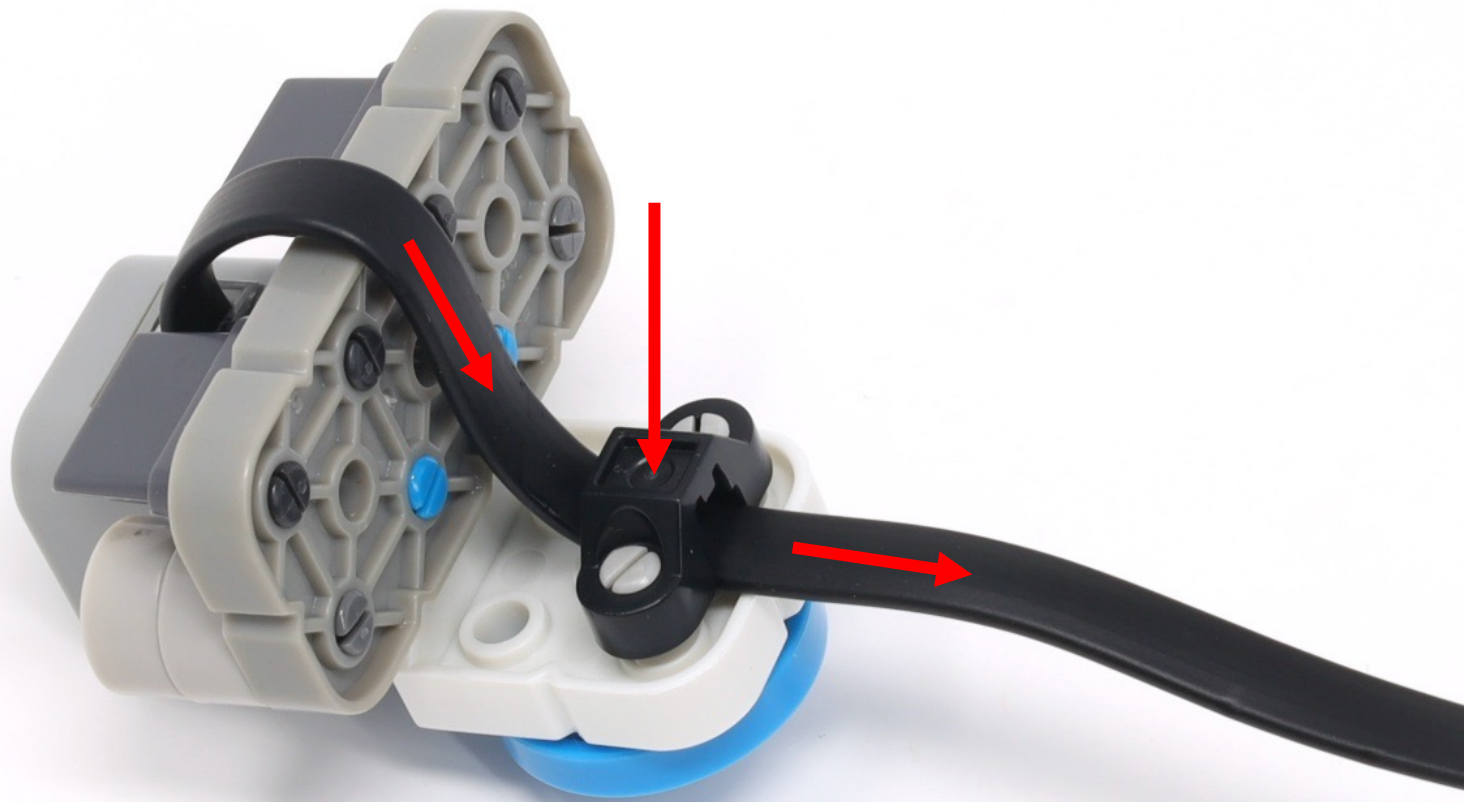


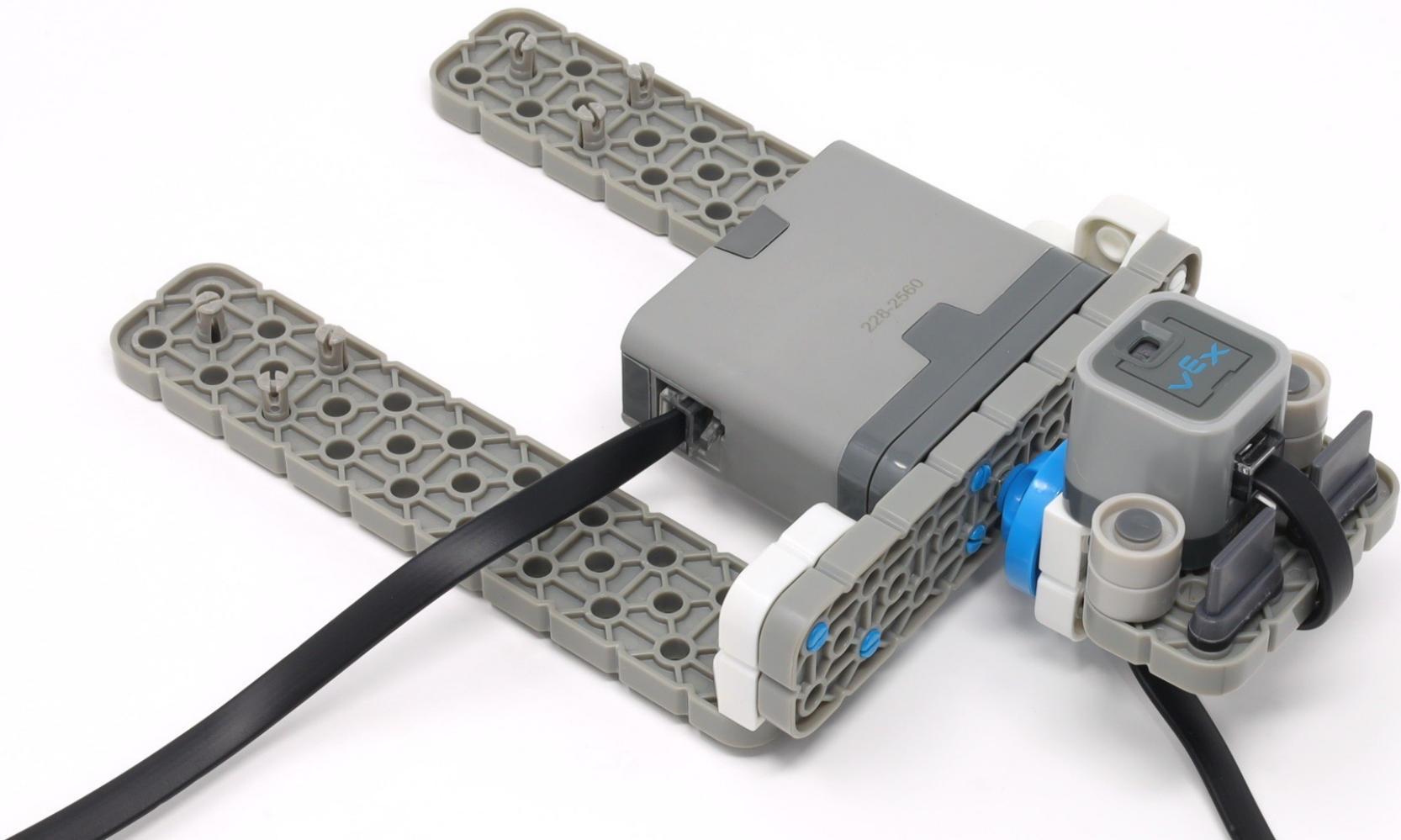


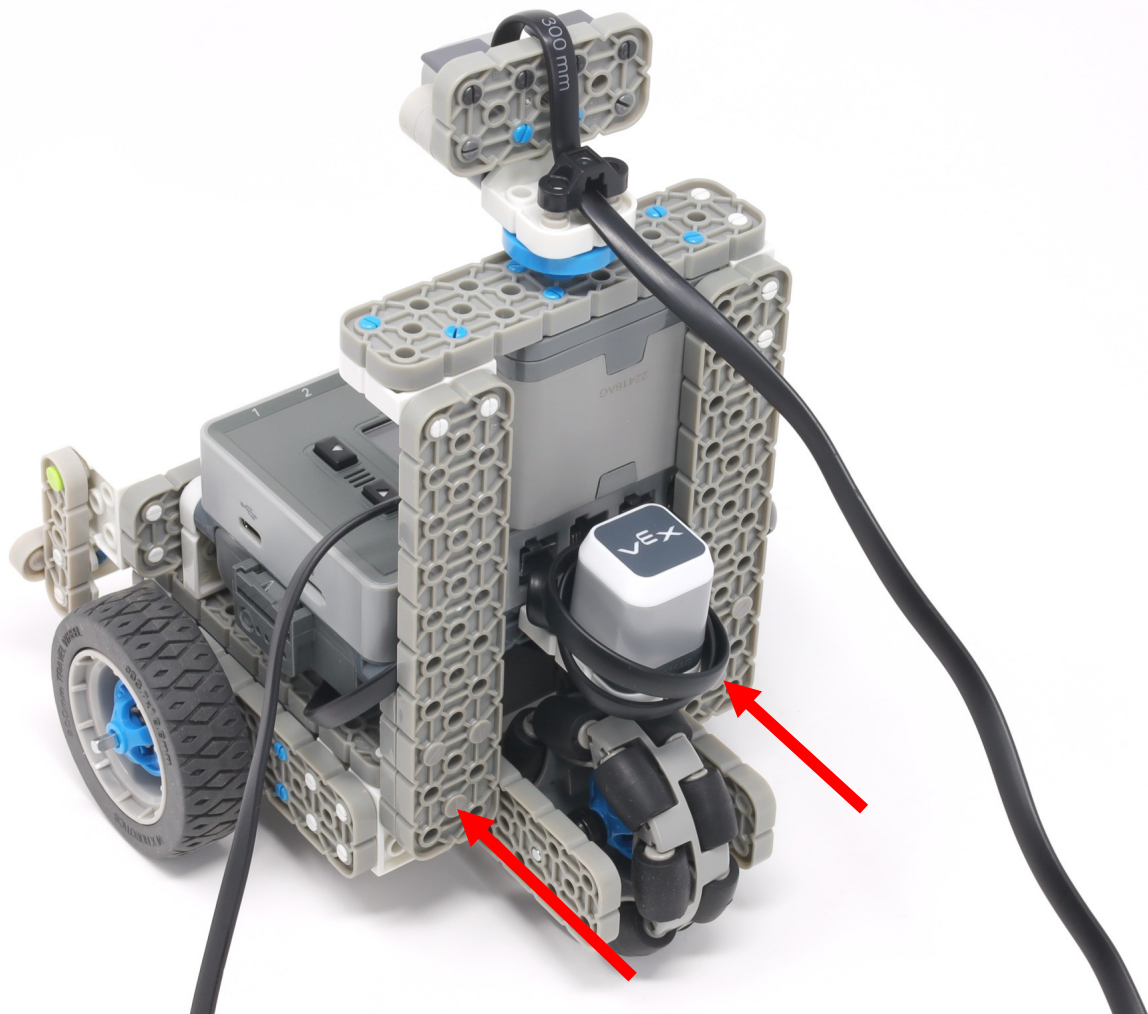




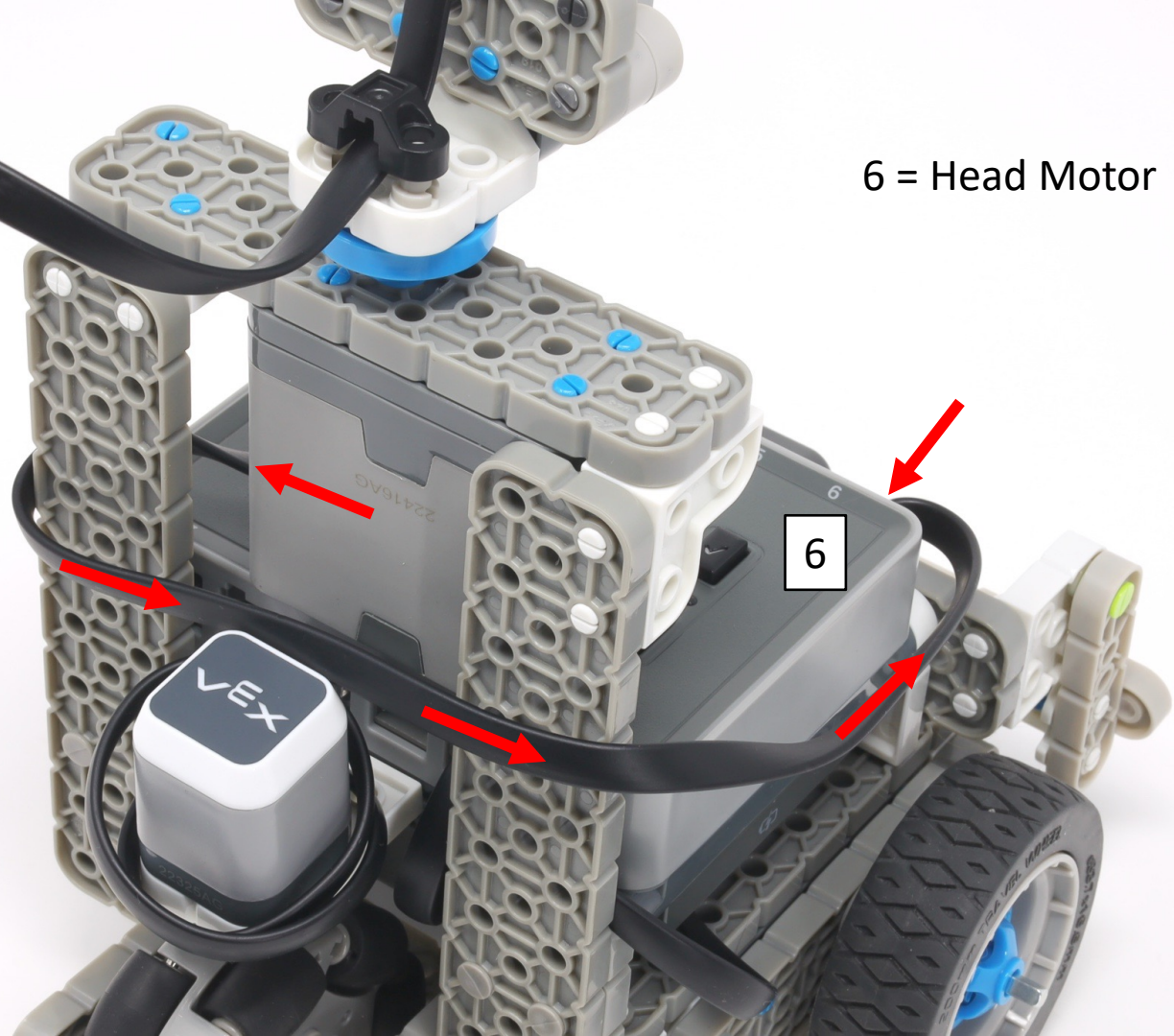








6 = Head Motor



8 = Distance Sensor

