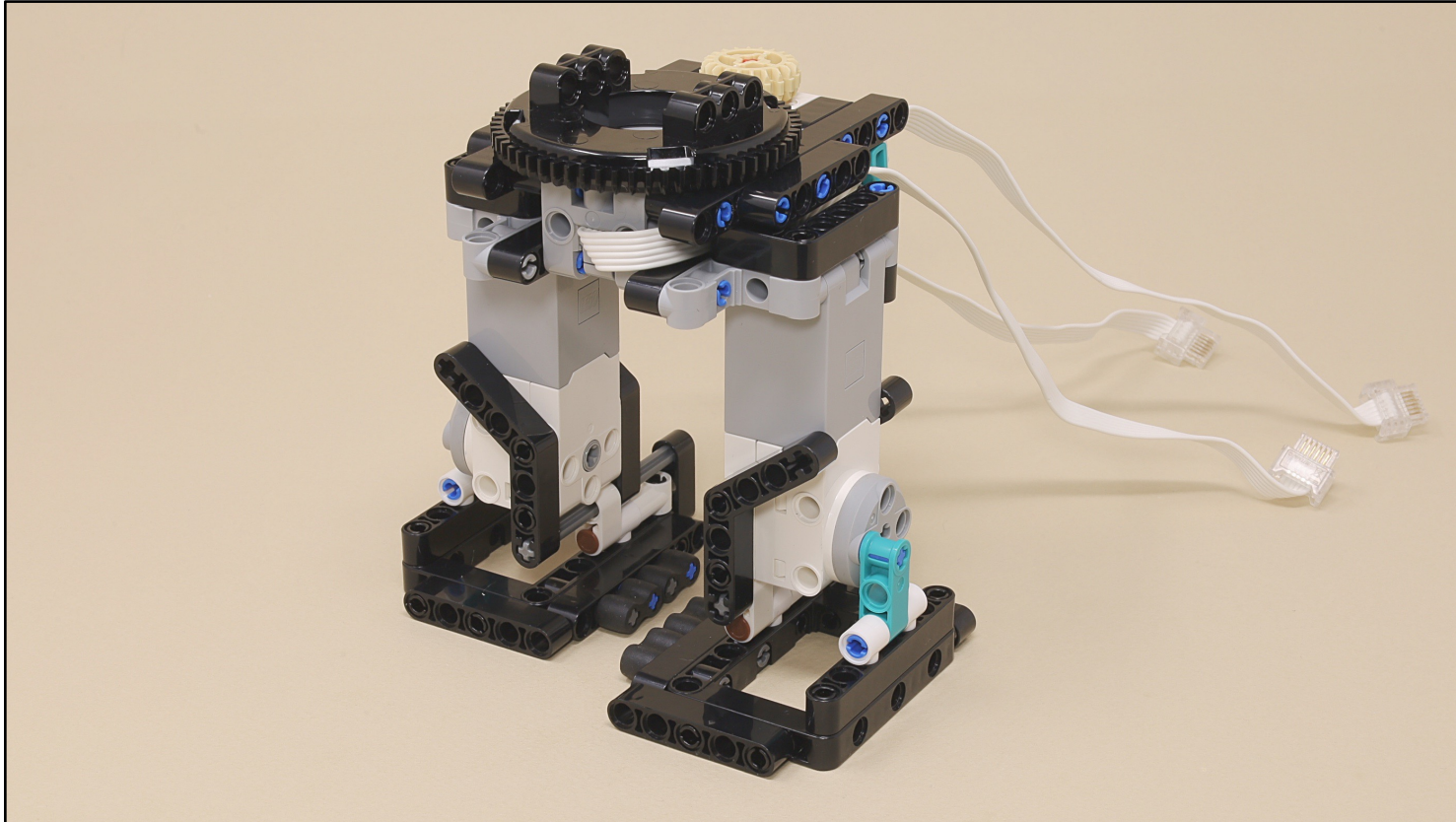
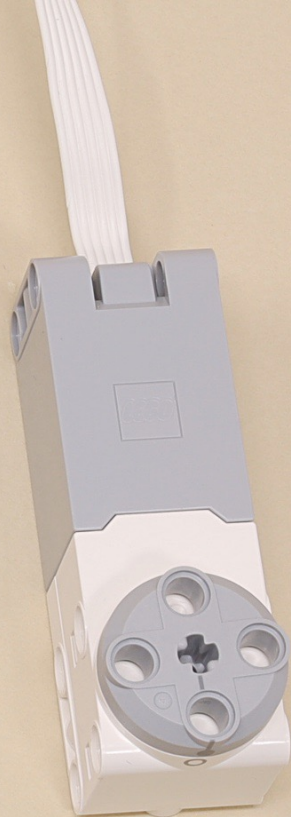
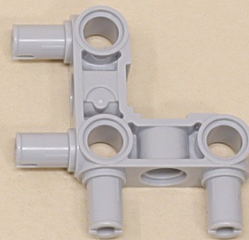
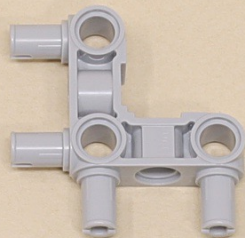
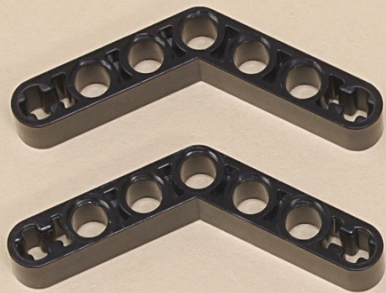
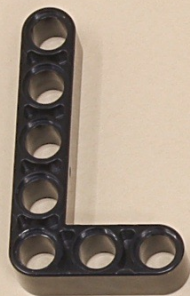


Legs for Scout Walker



Scroll for
building
instructions



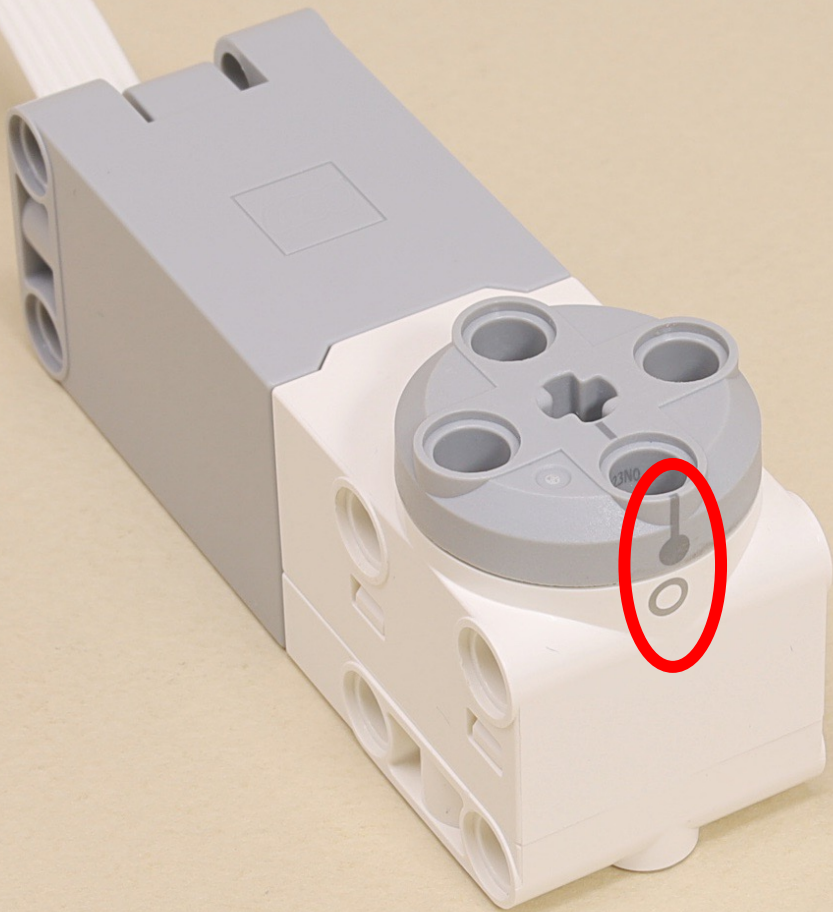


11

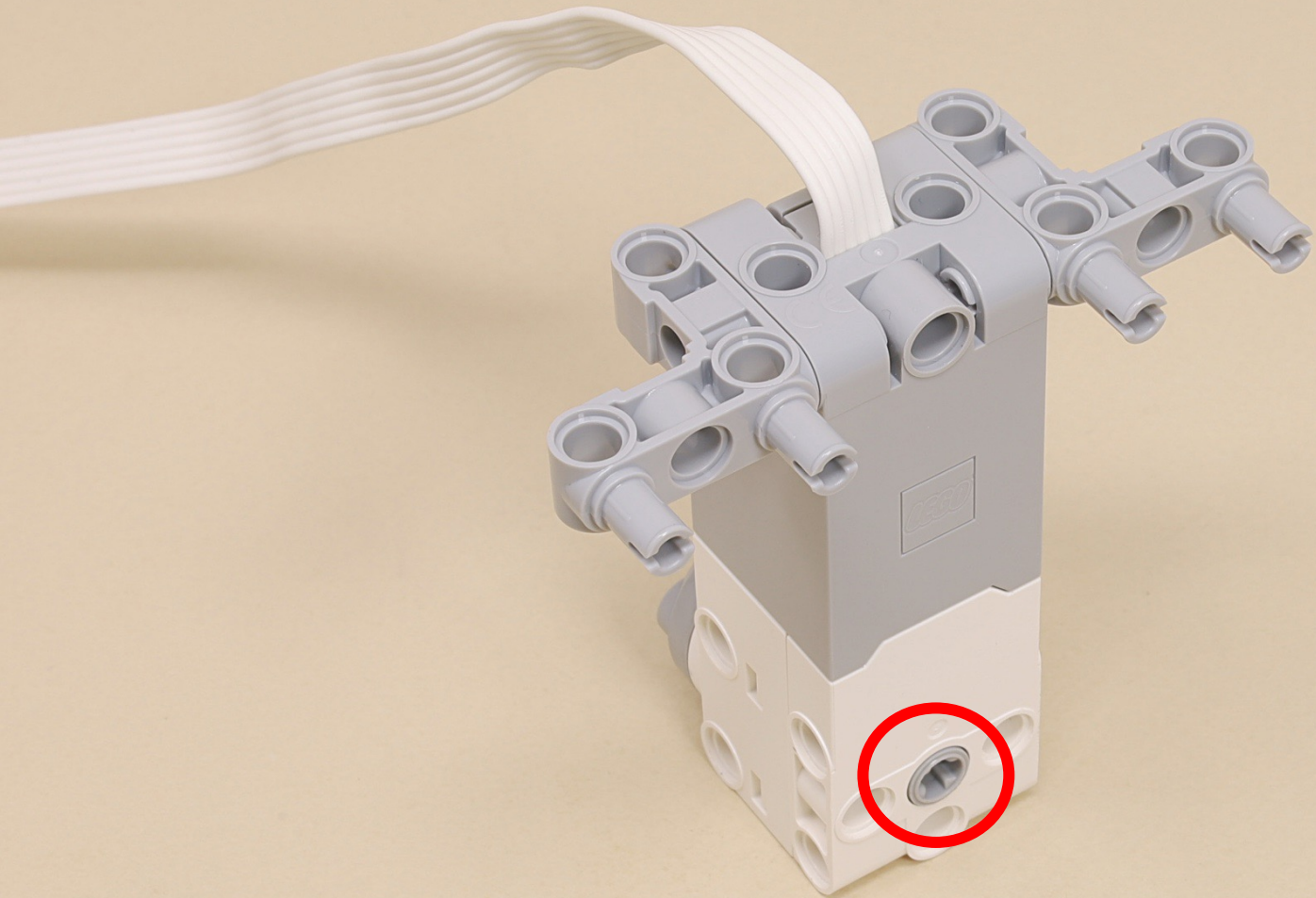


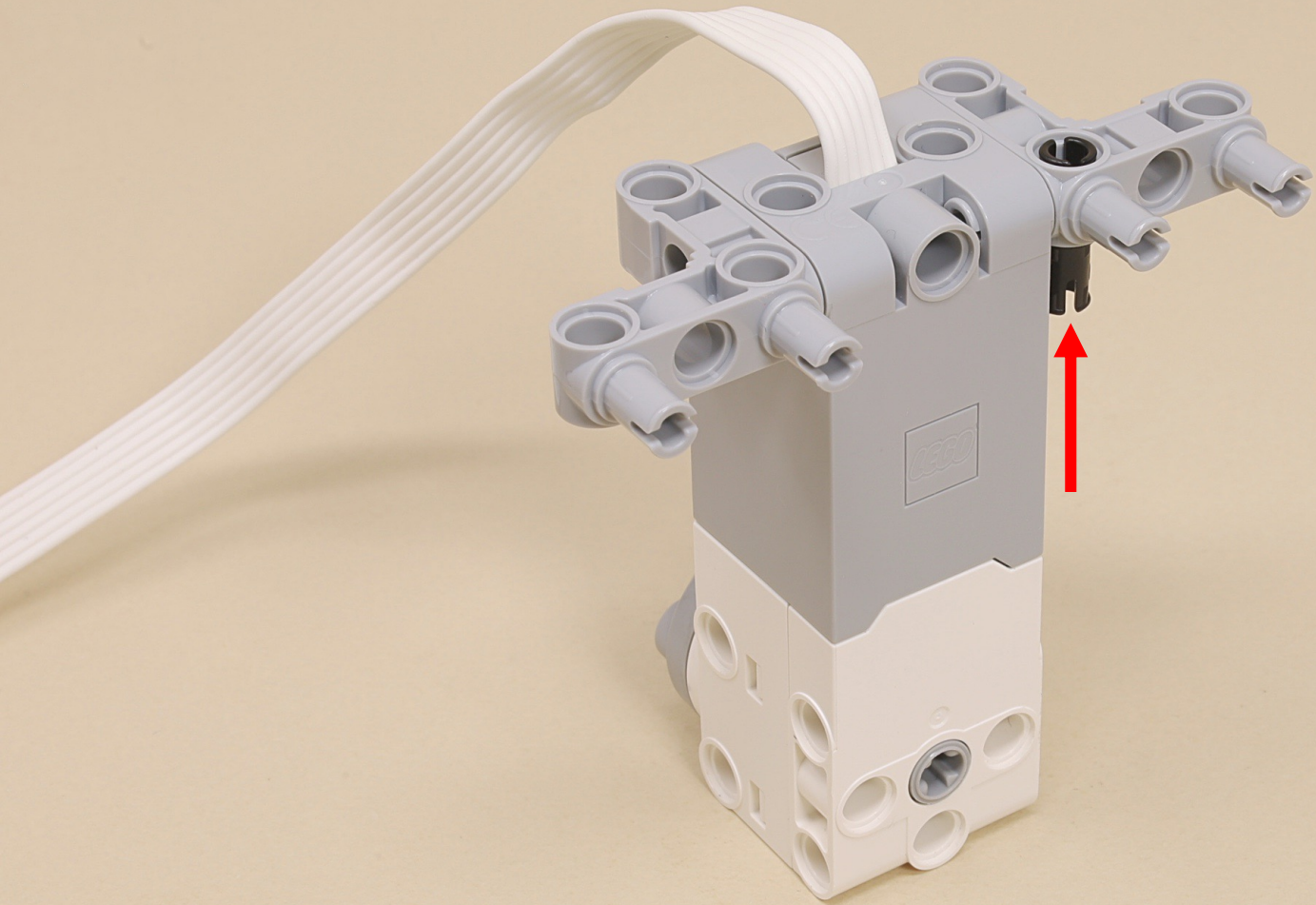
(7 x)

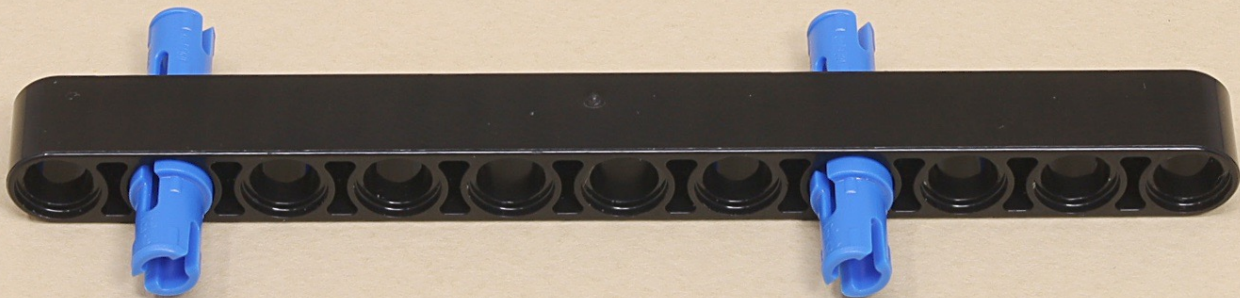
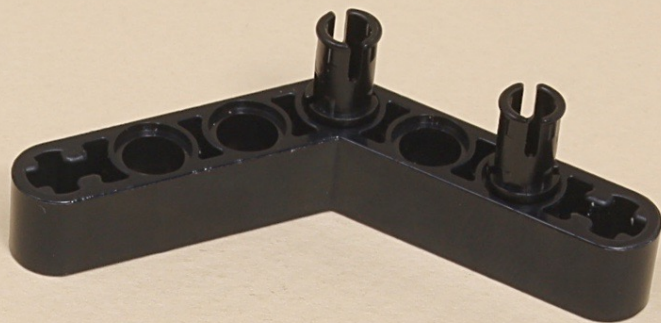
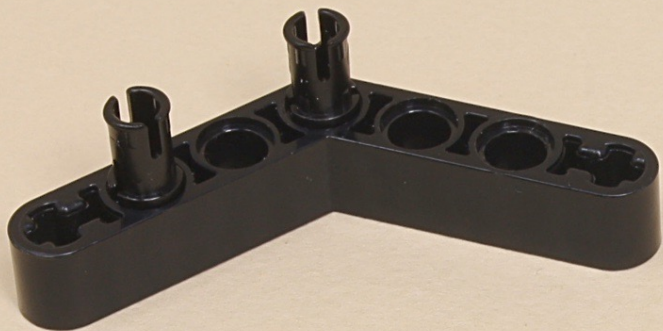


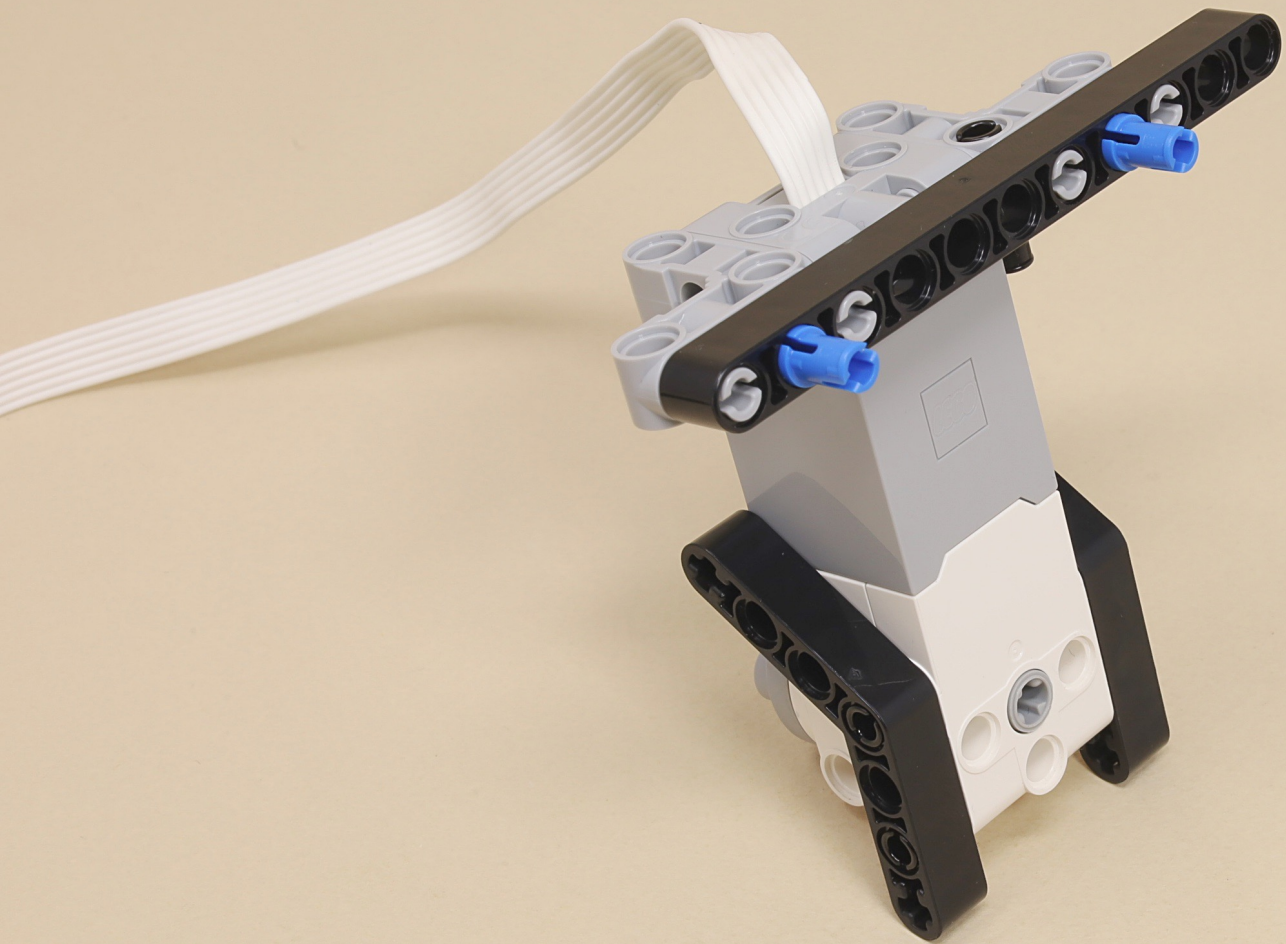


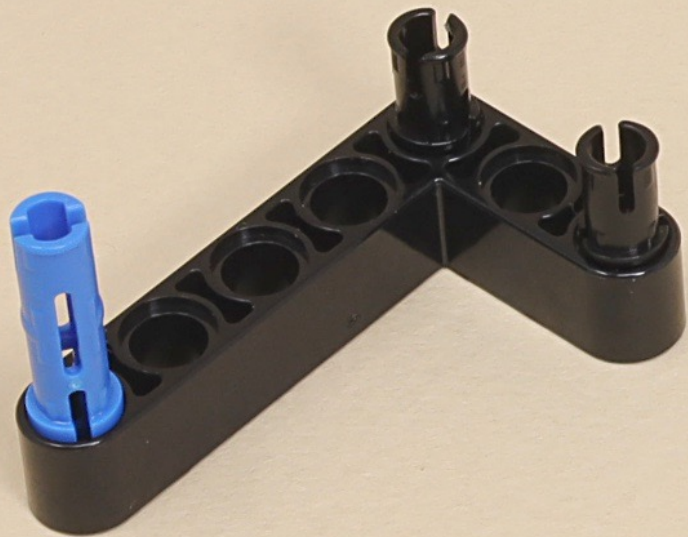
Keep all motors at their zero position for this build.

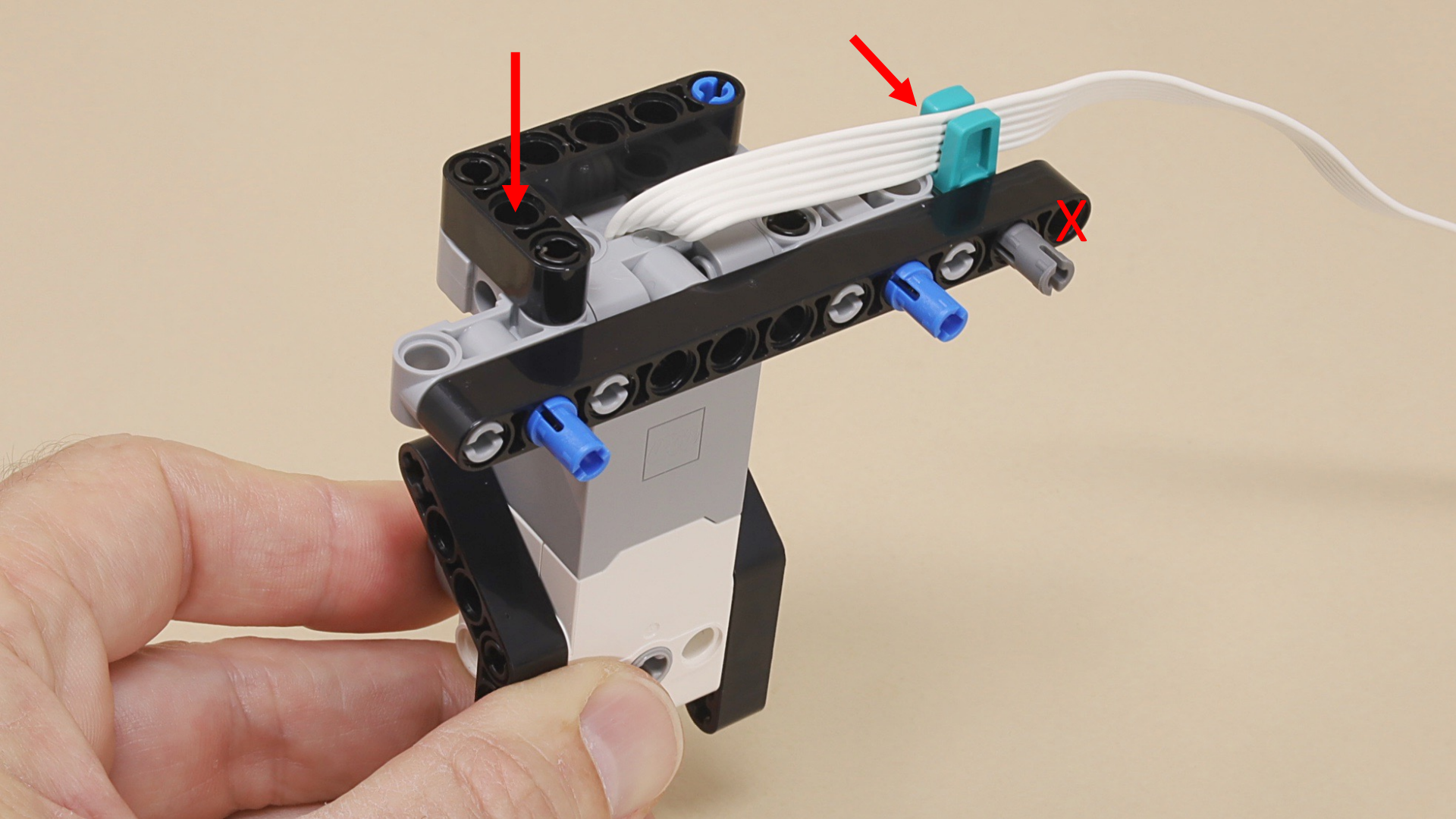


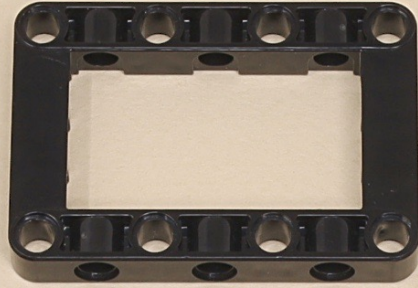
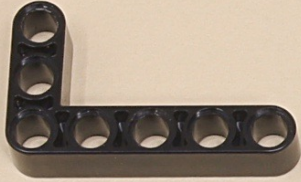












7



7



8

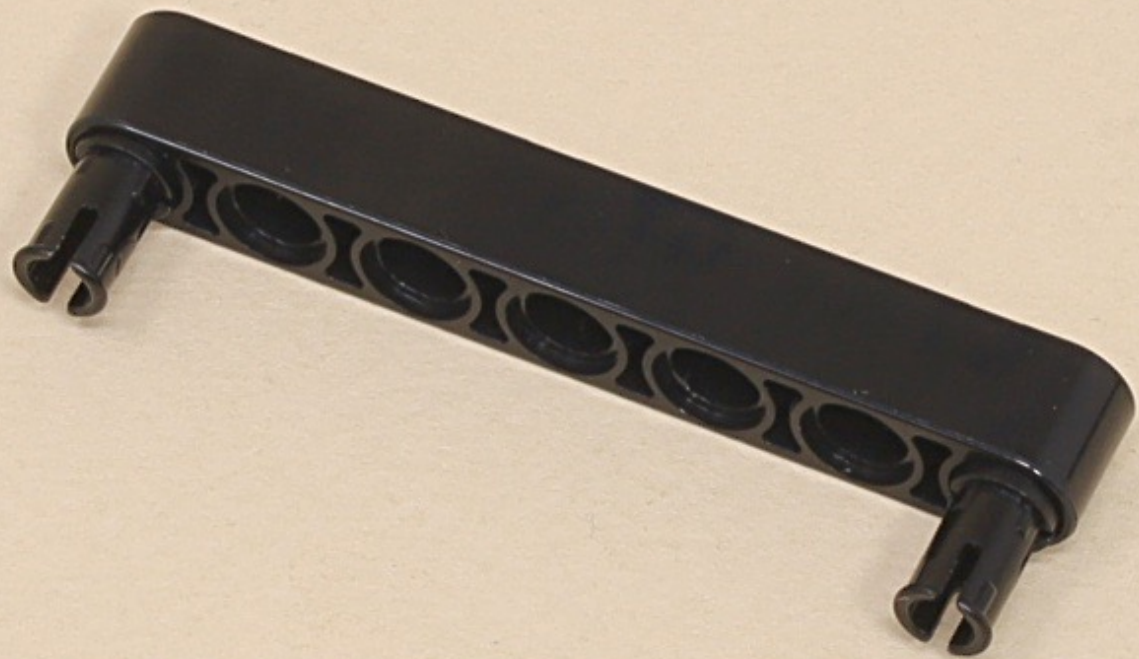


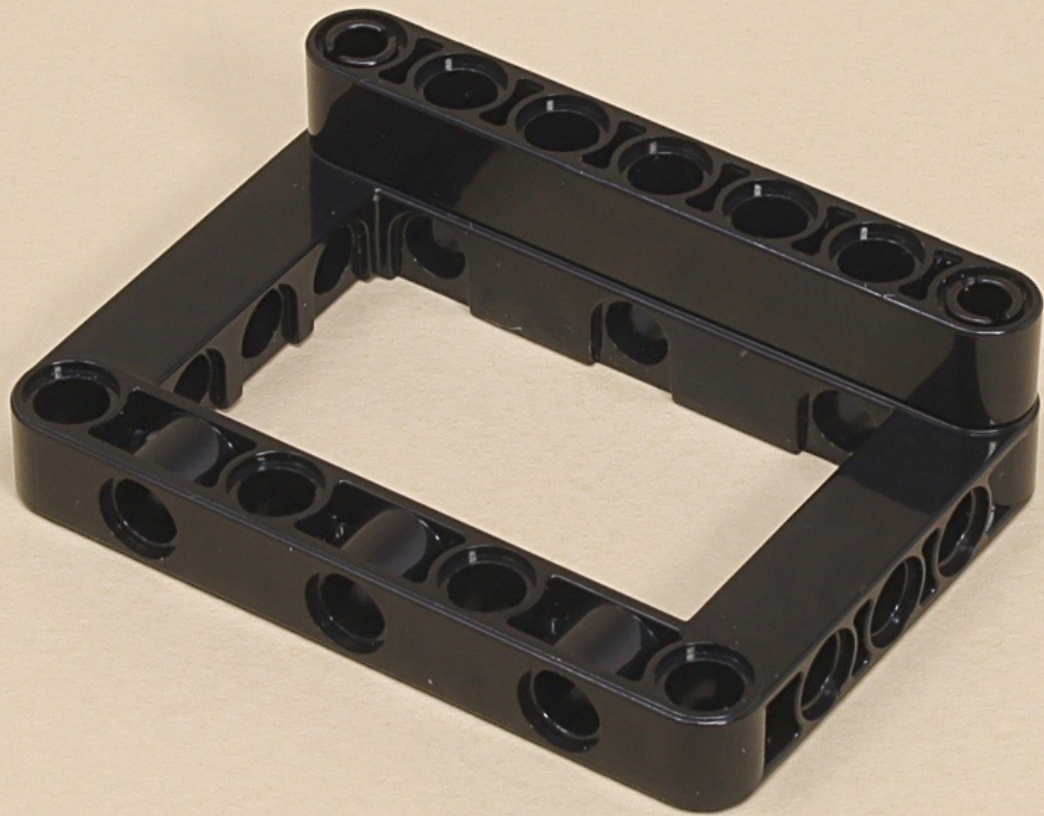
3

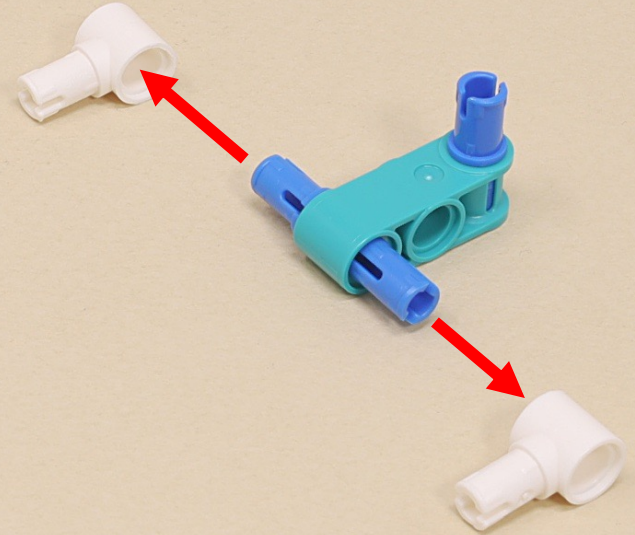
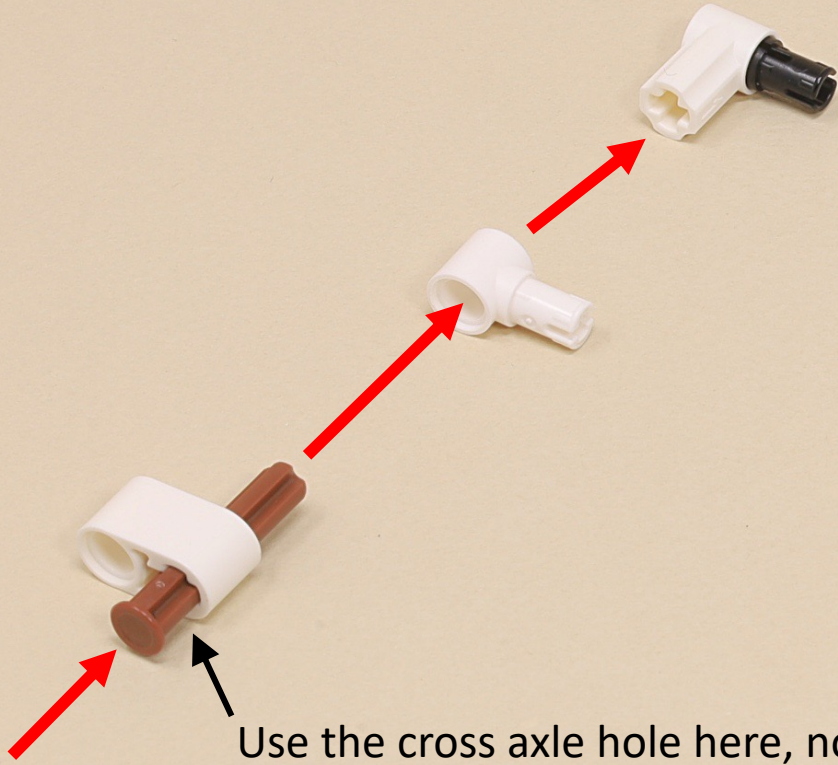


(8 x)



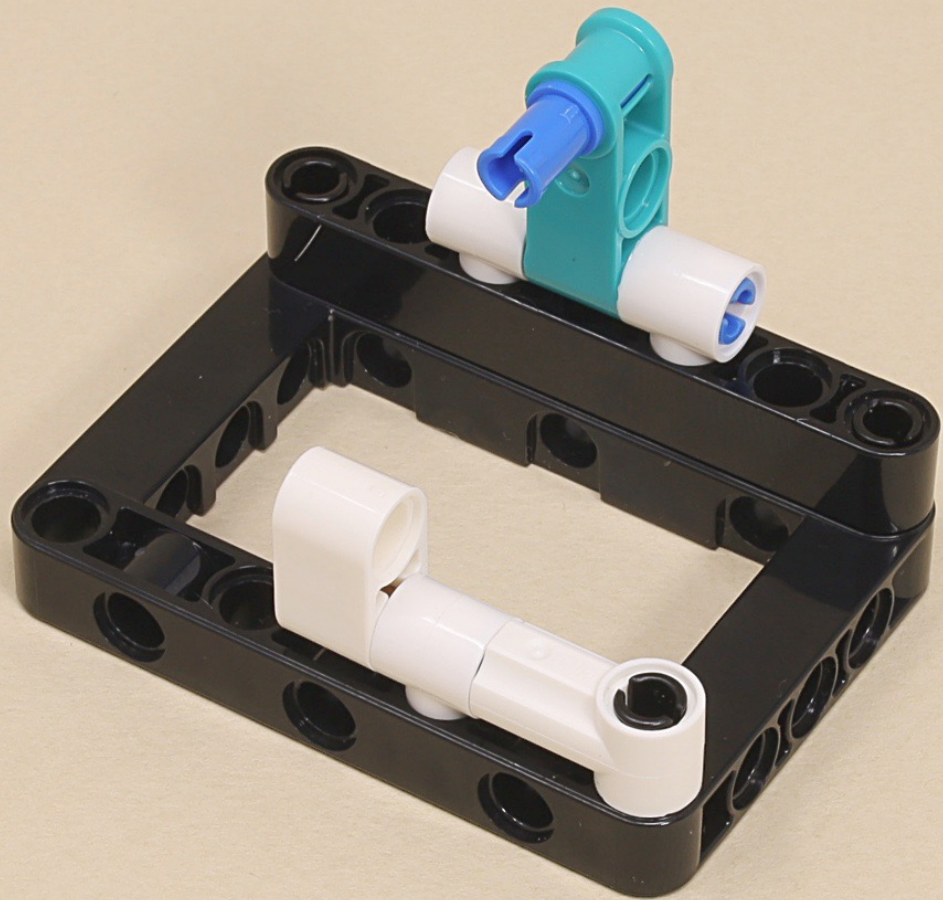


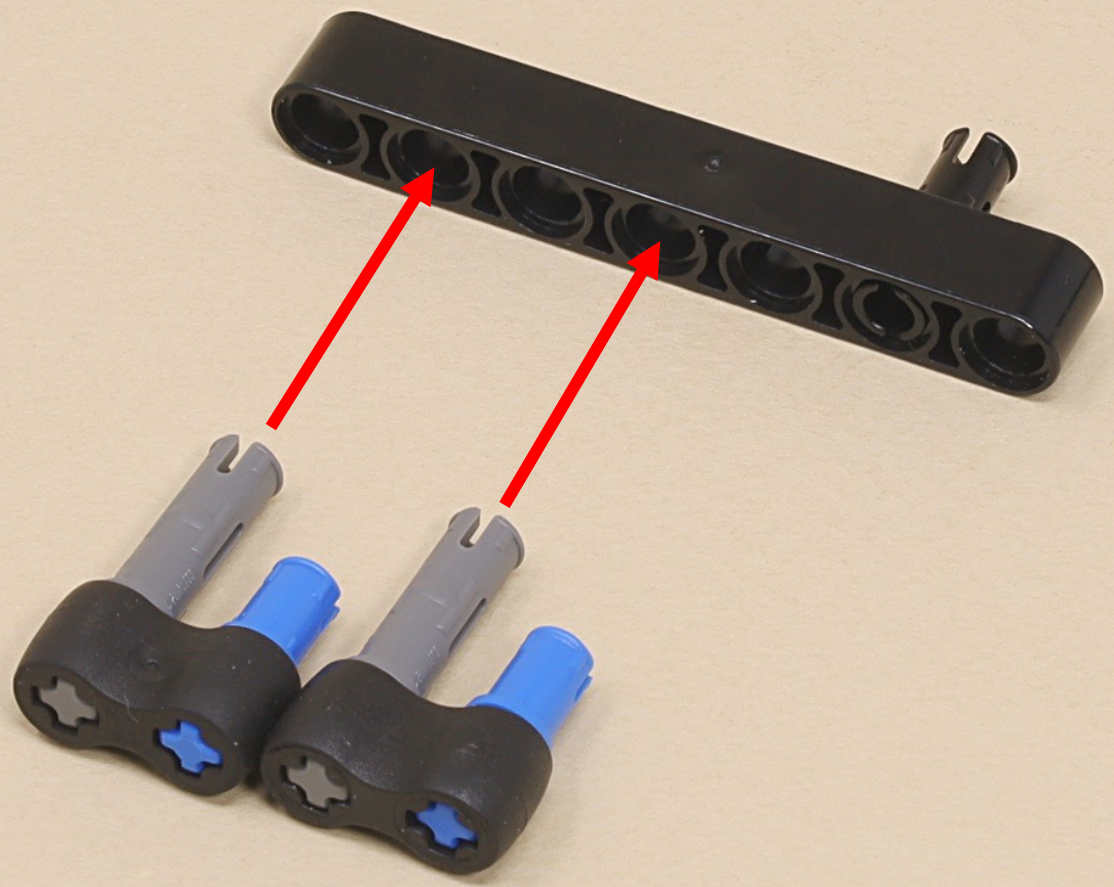


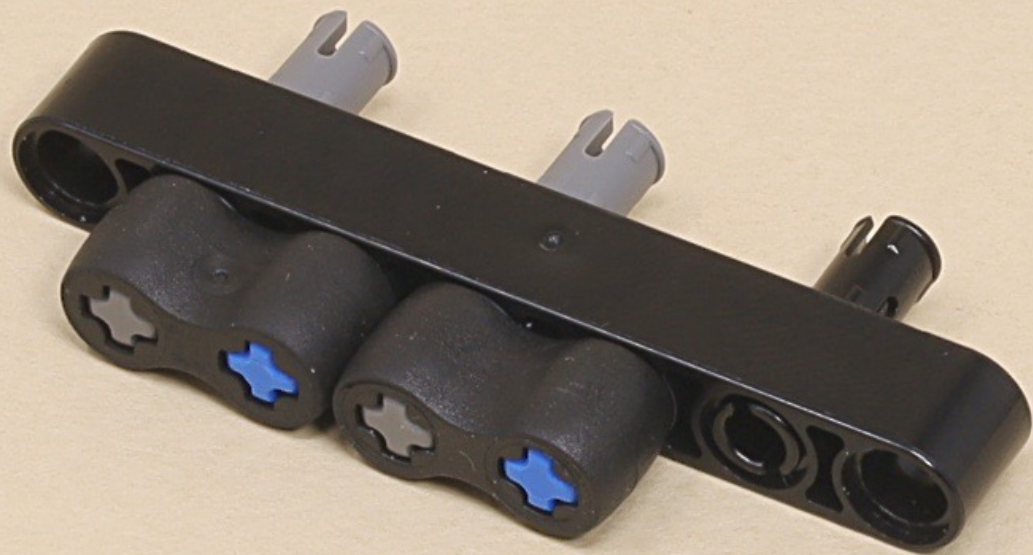


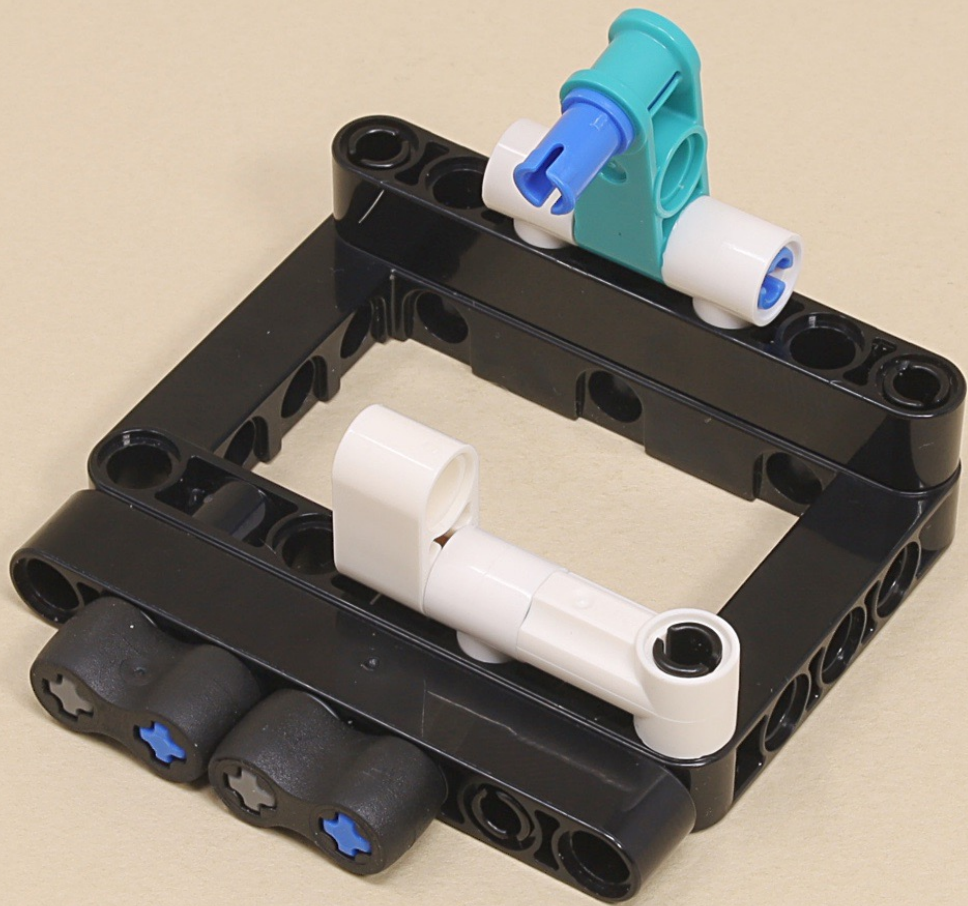
Use the cross axle hole here, not the round hole.

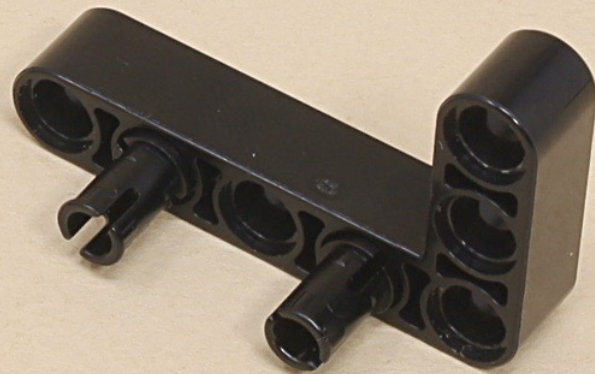


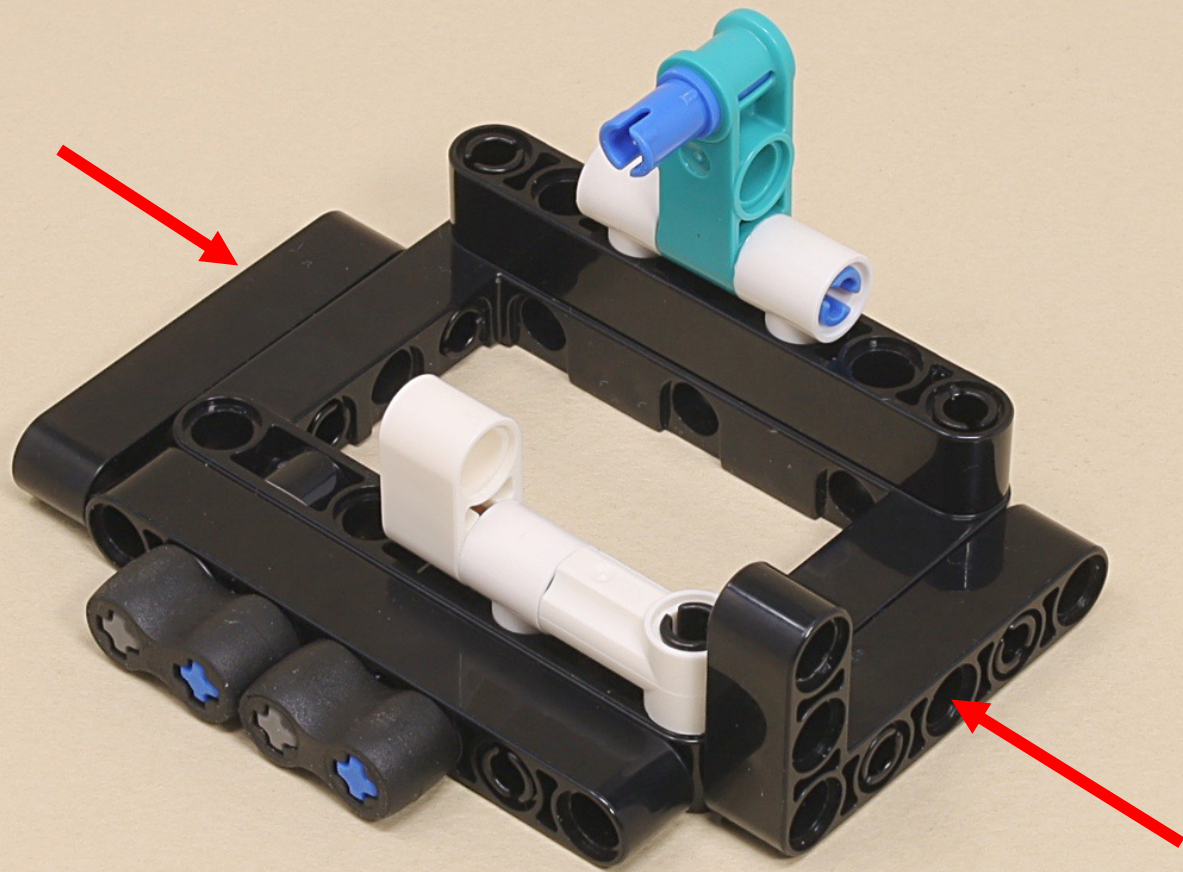


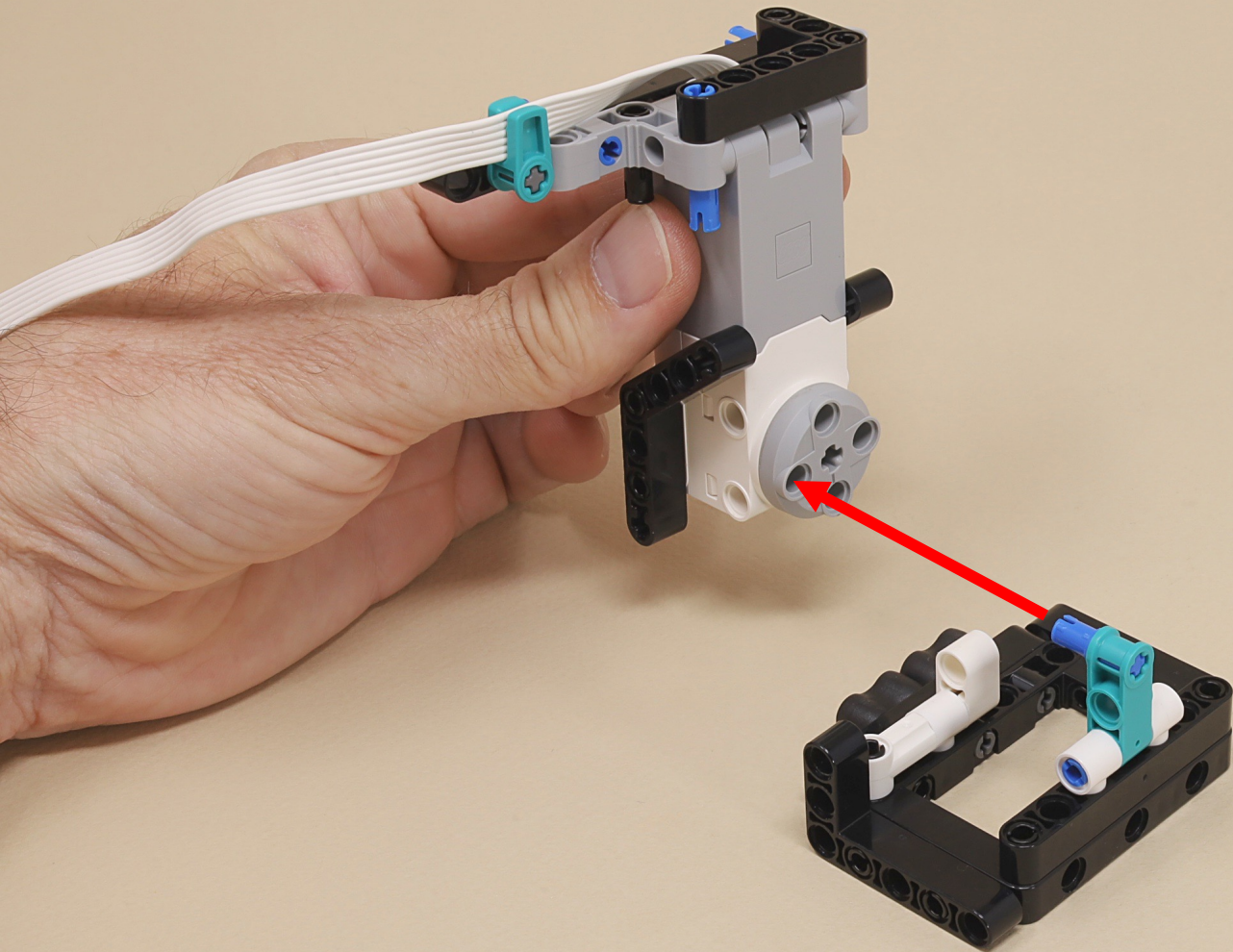


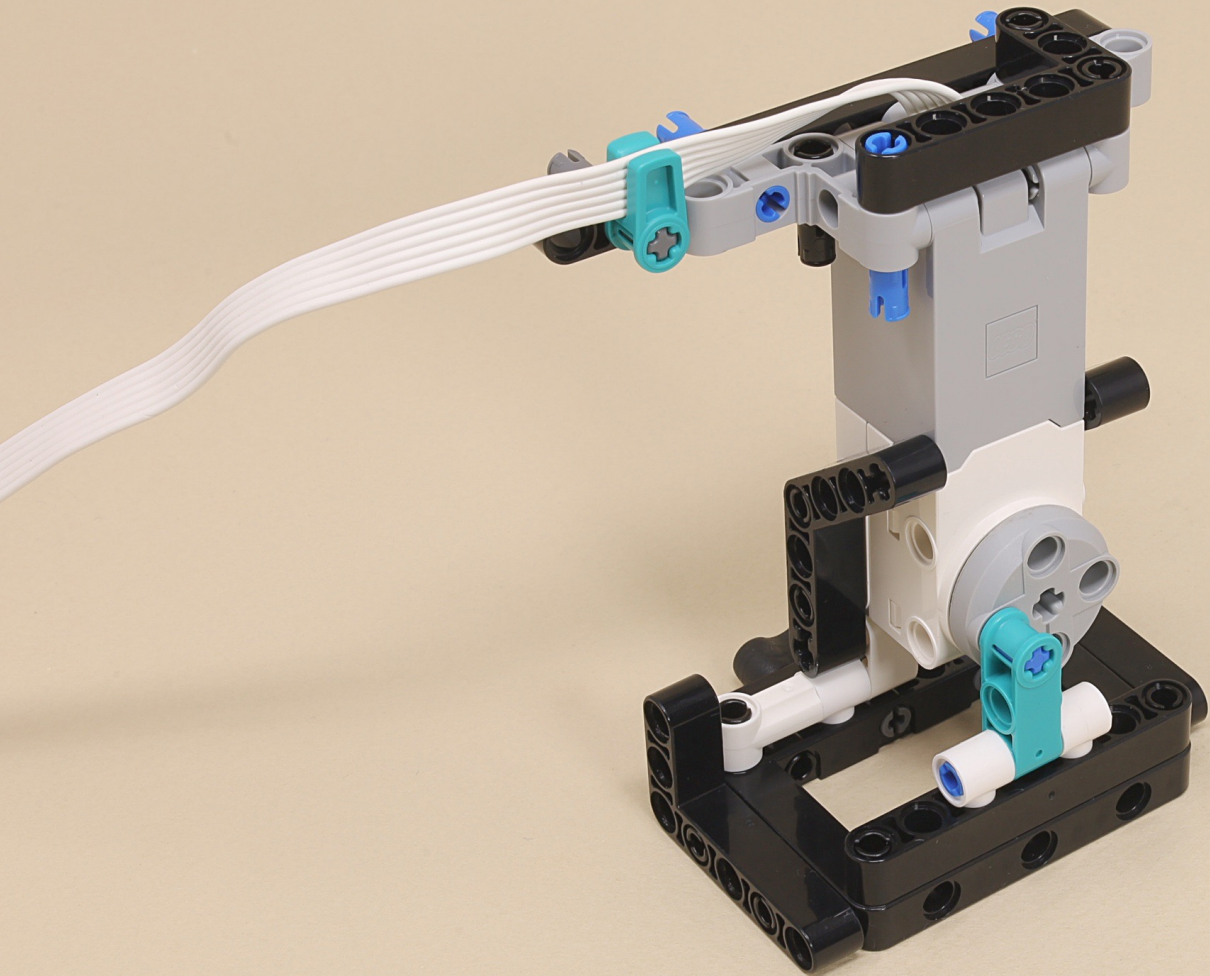


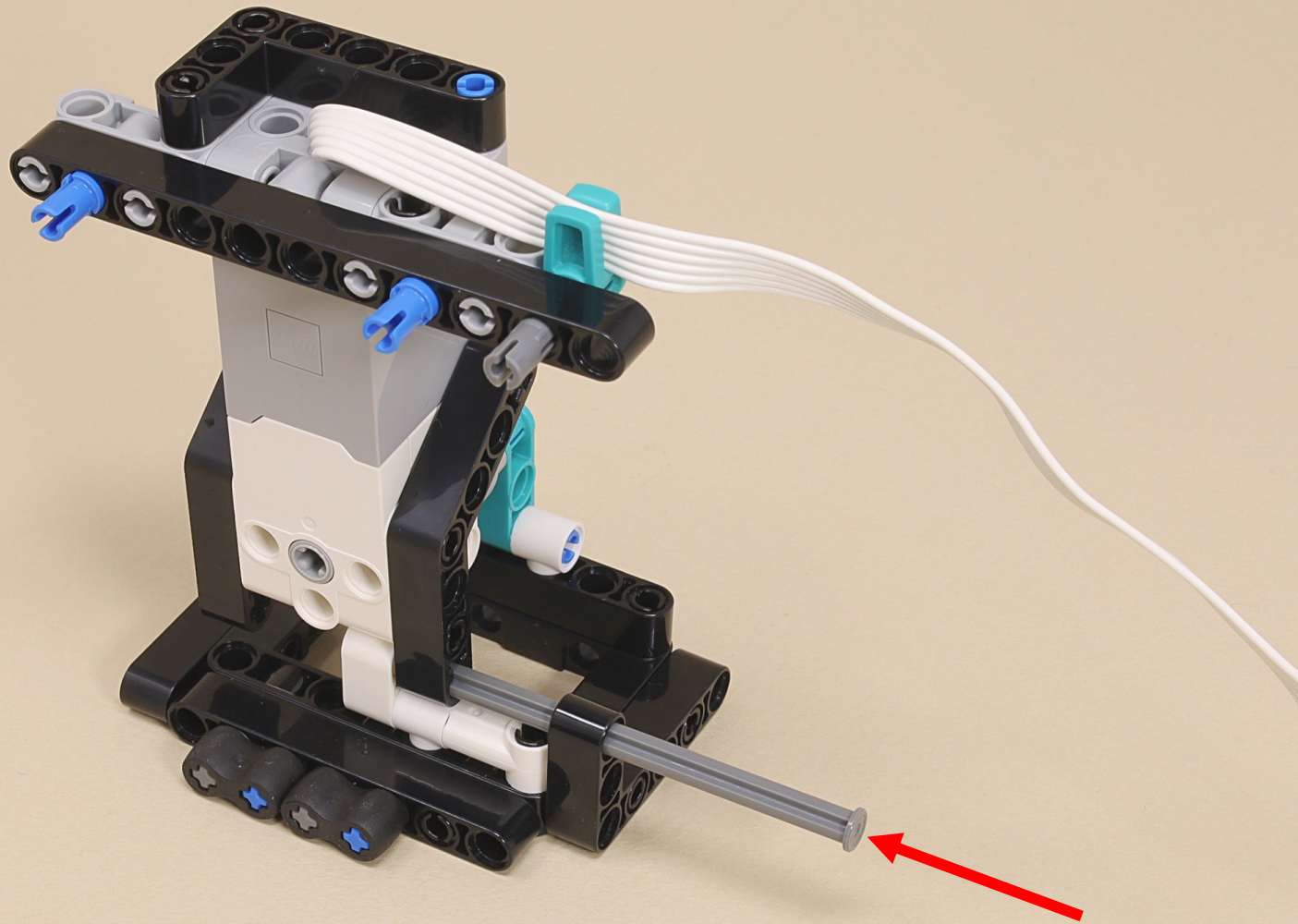


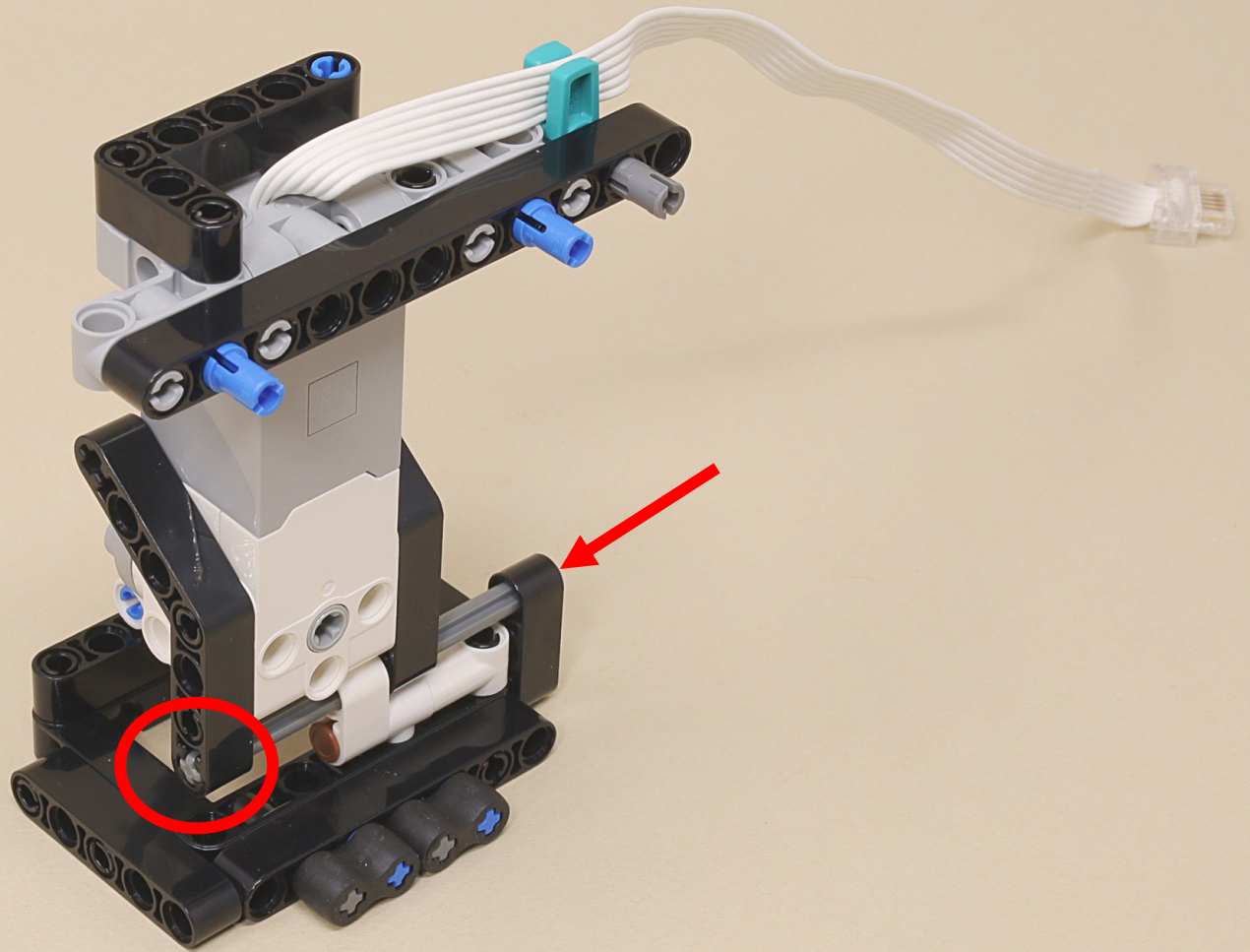


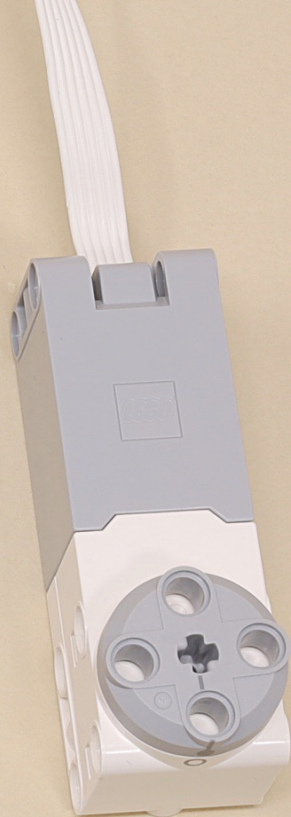
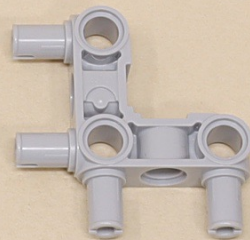
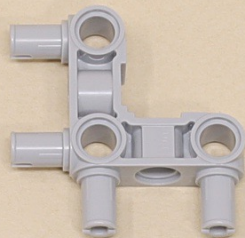
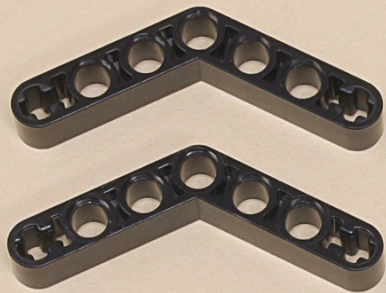
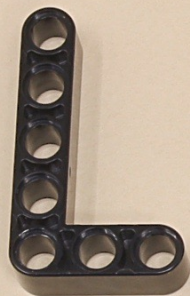










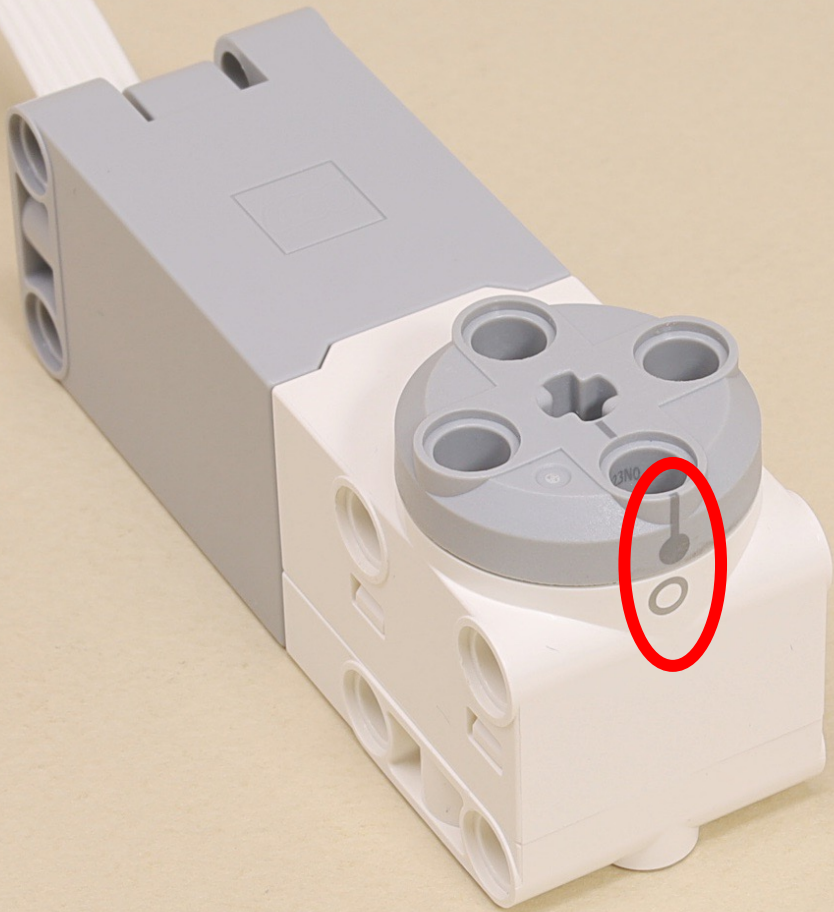


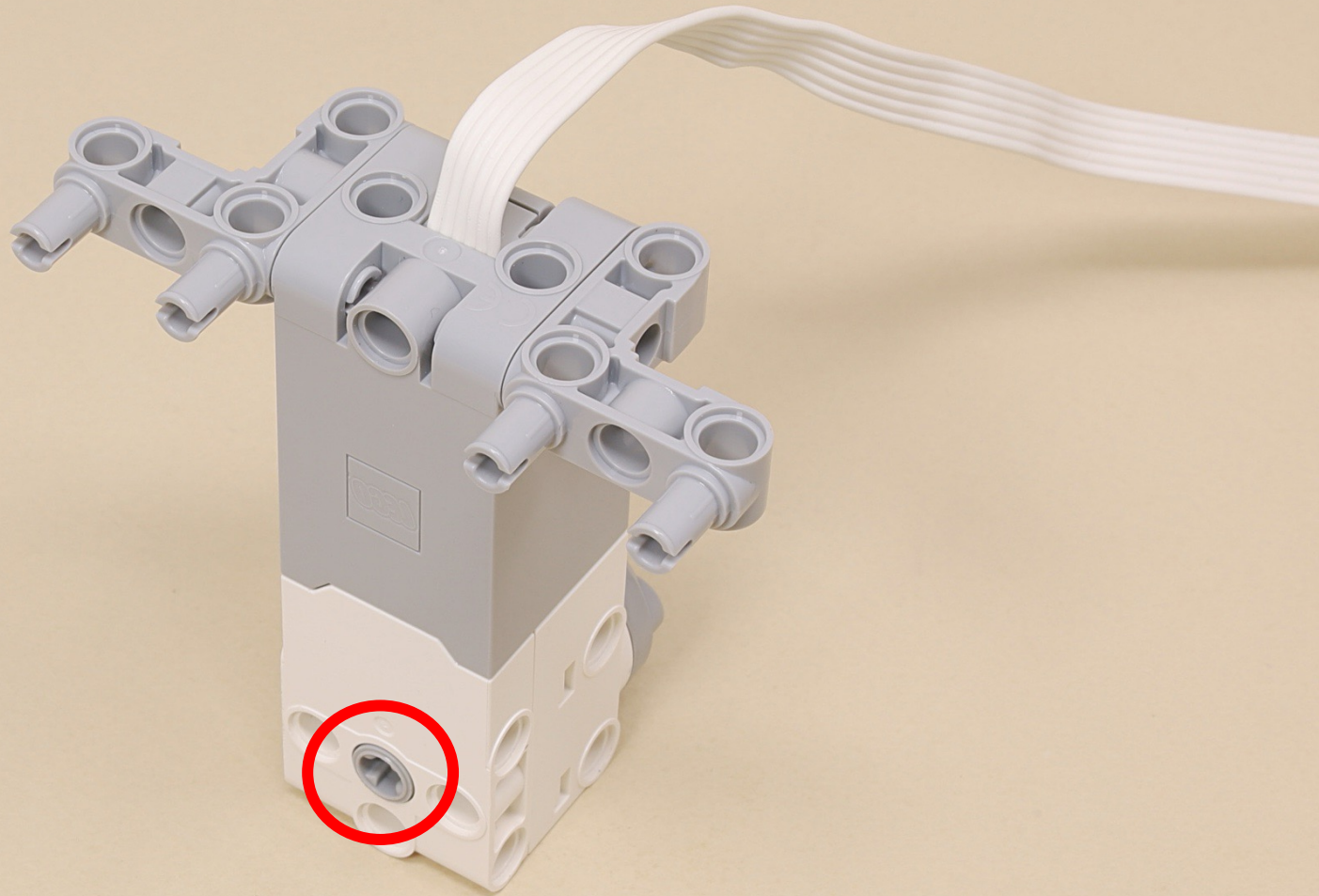
11

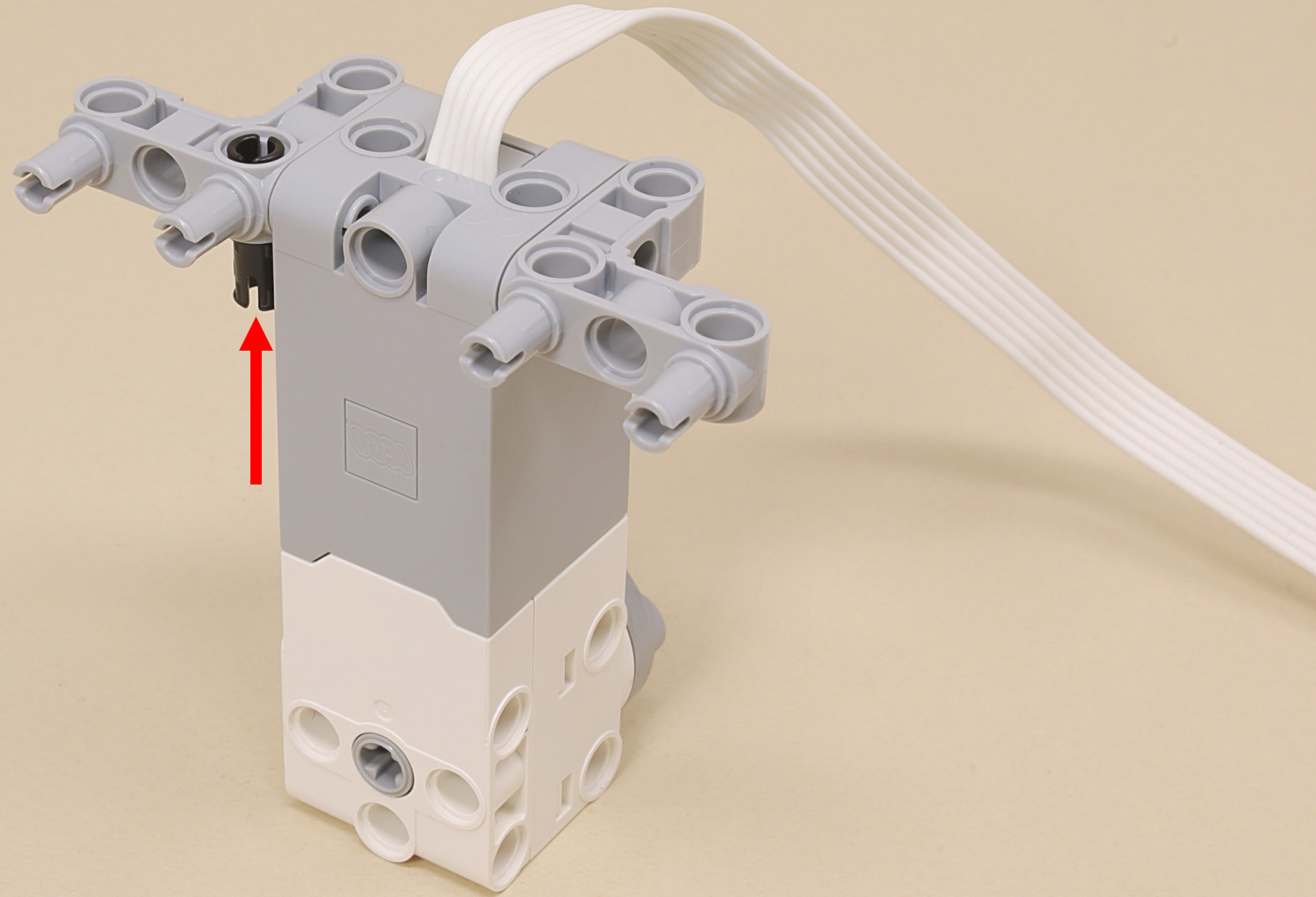


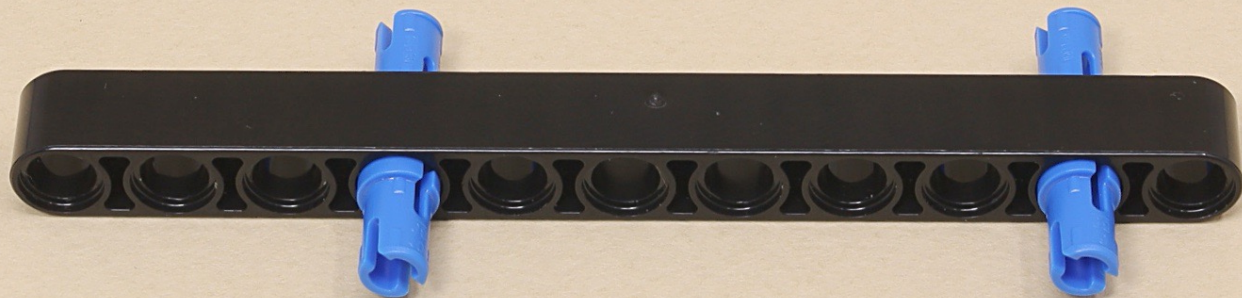
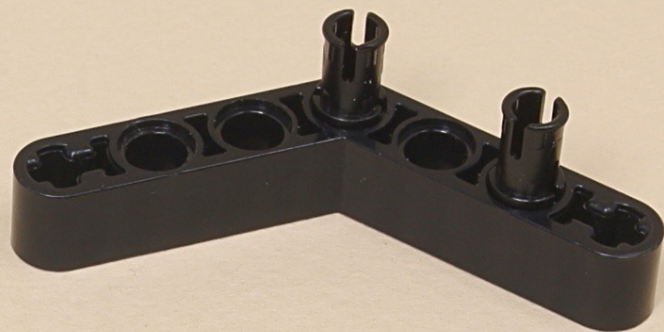
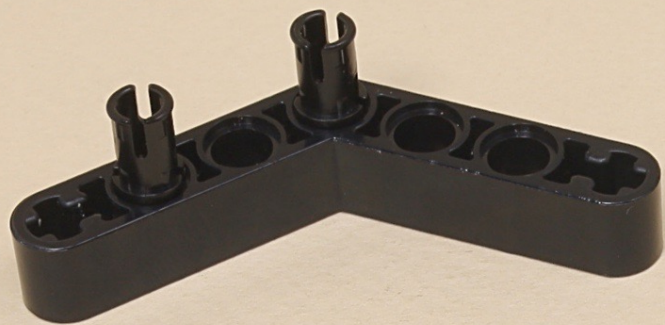
(7 x)

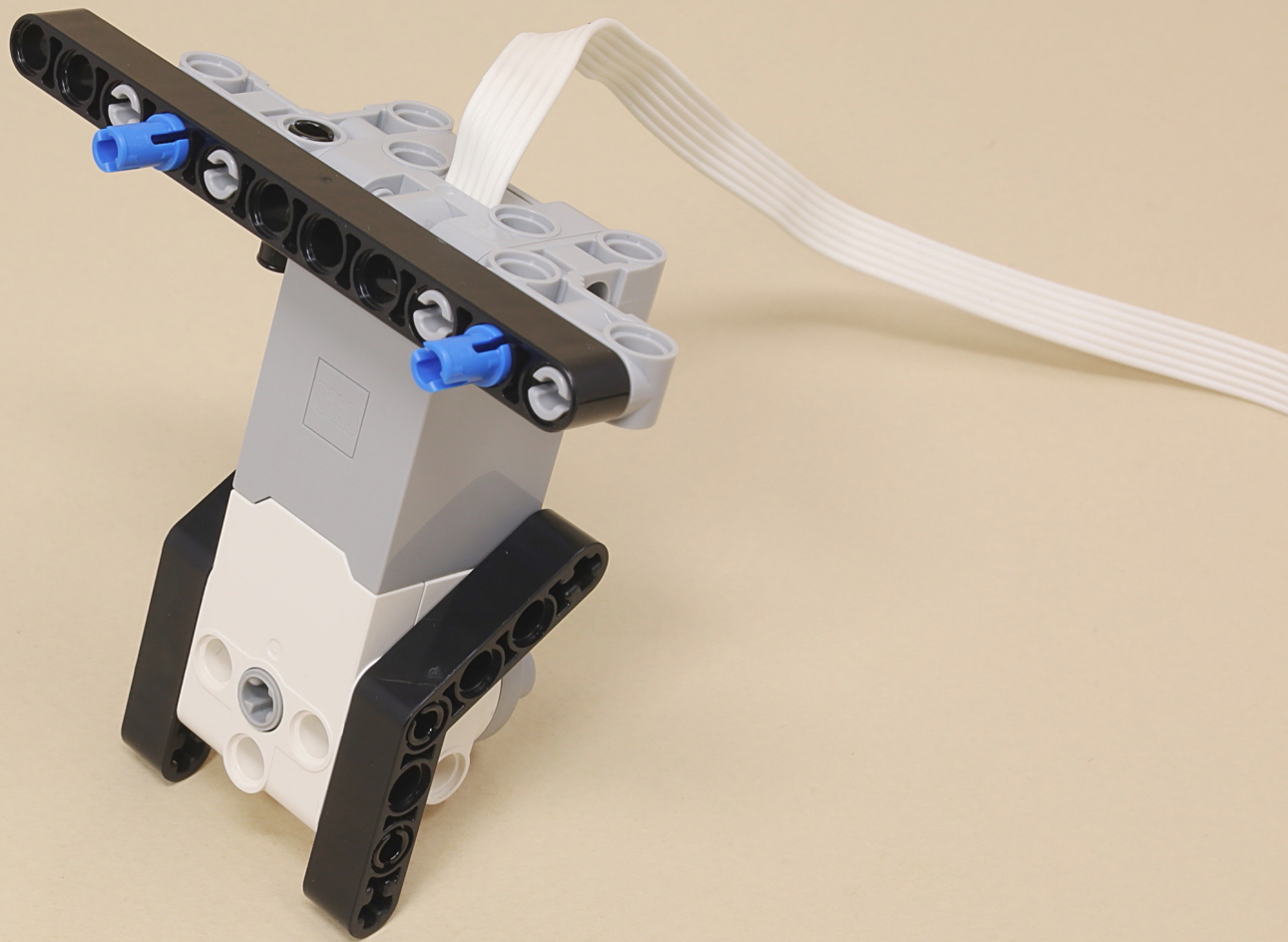


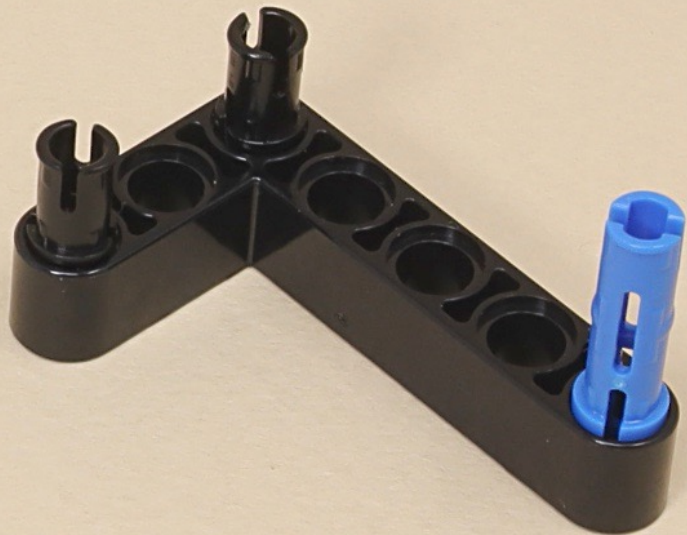


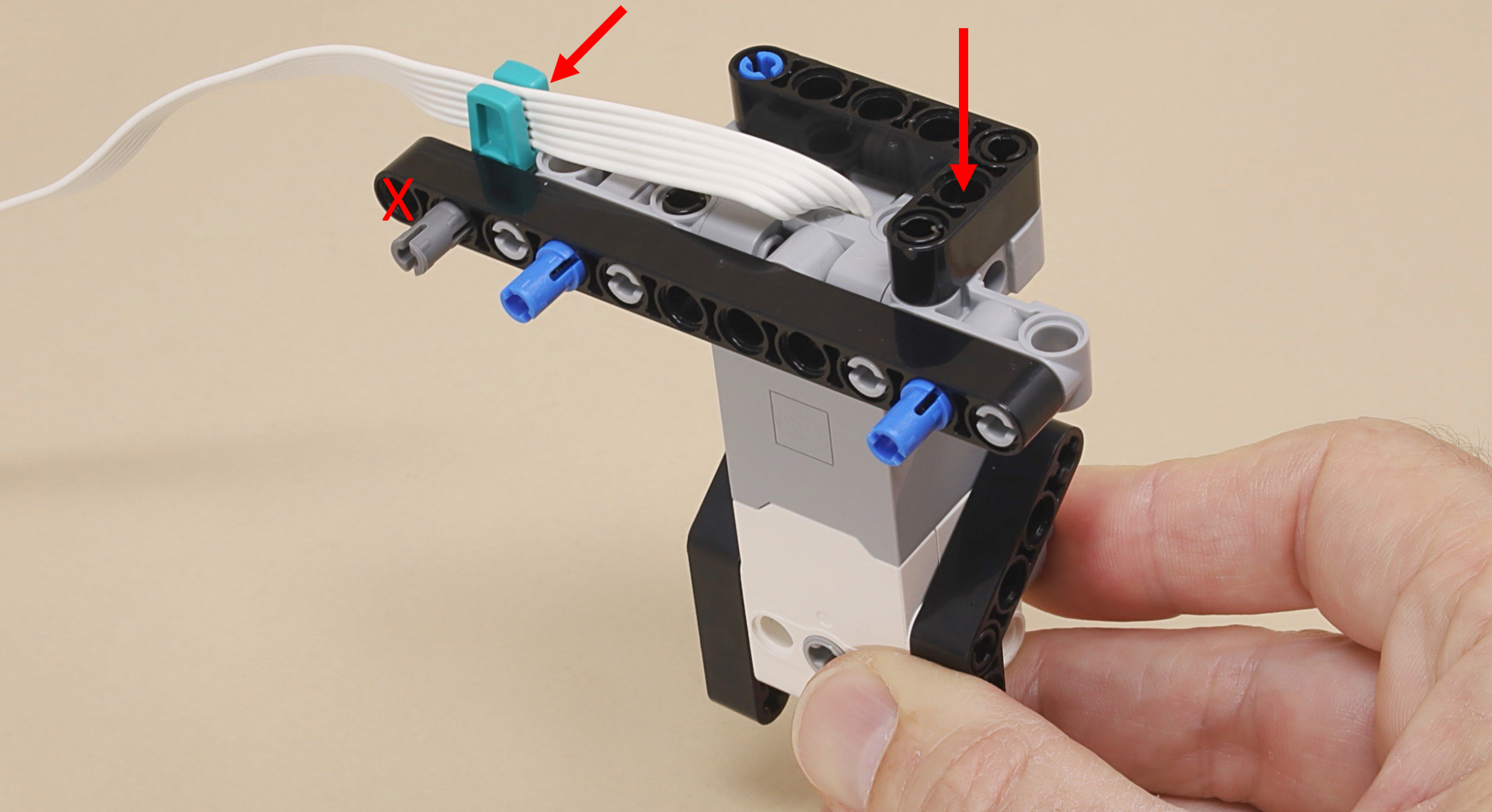


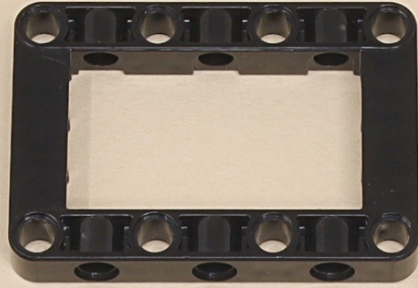
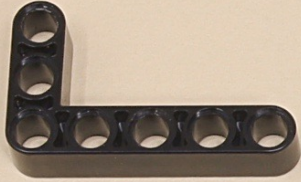












7



7



8

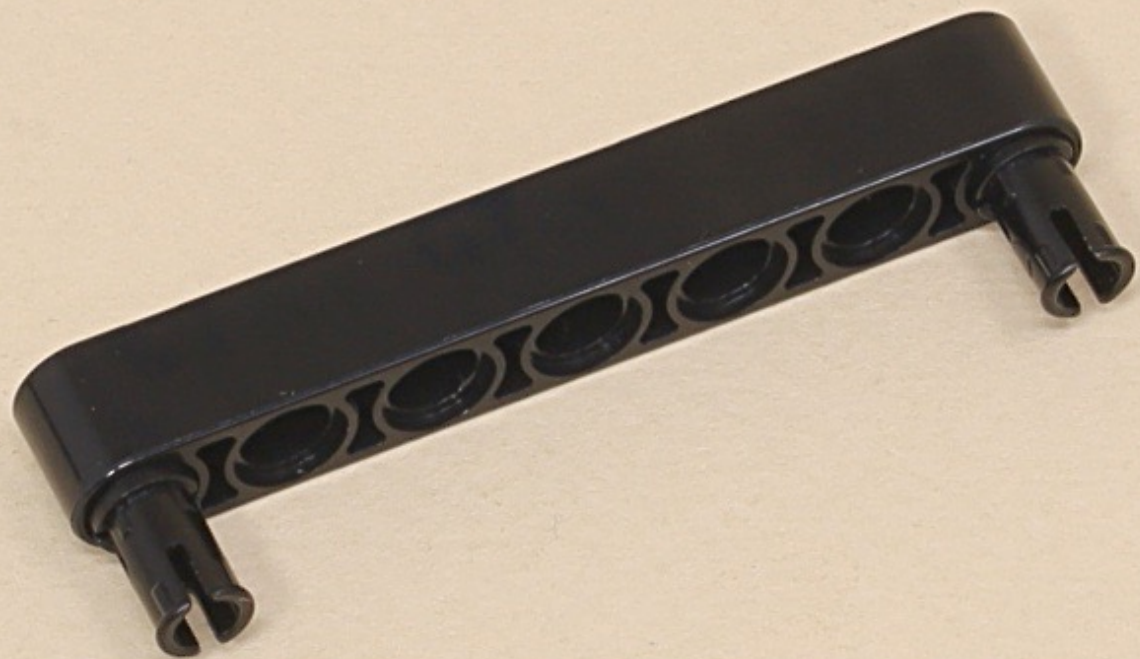


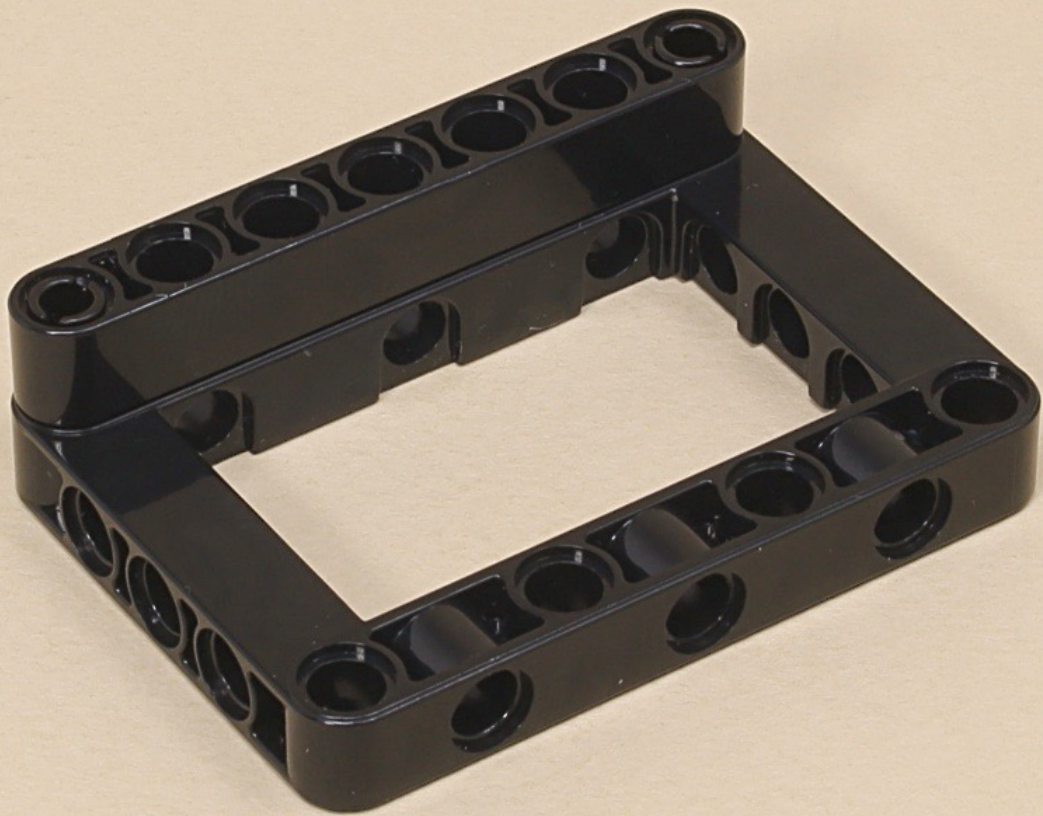
3

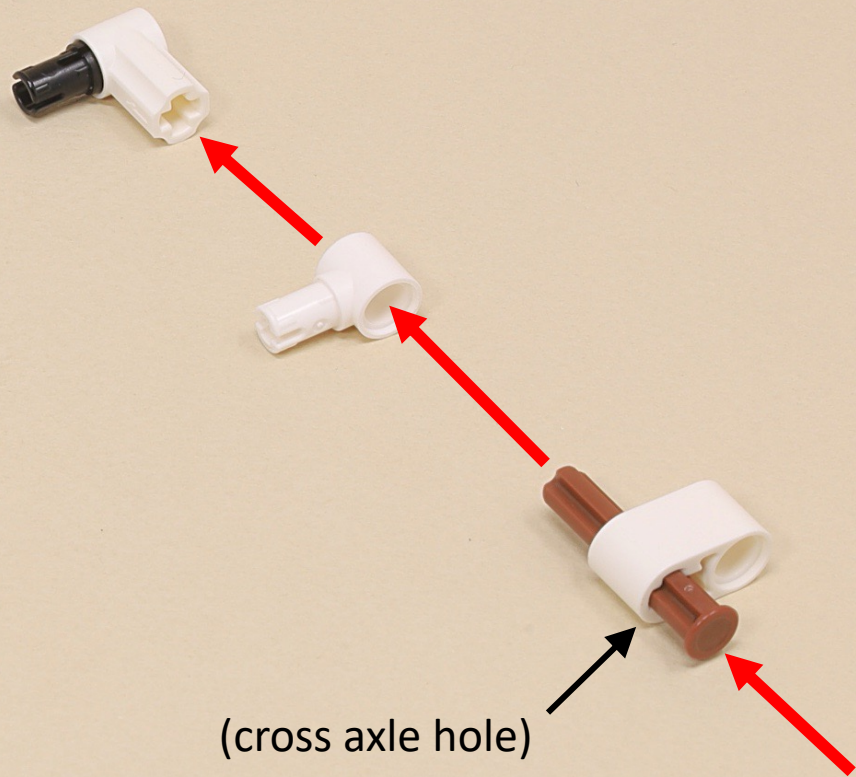
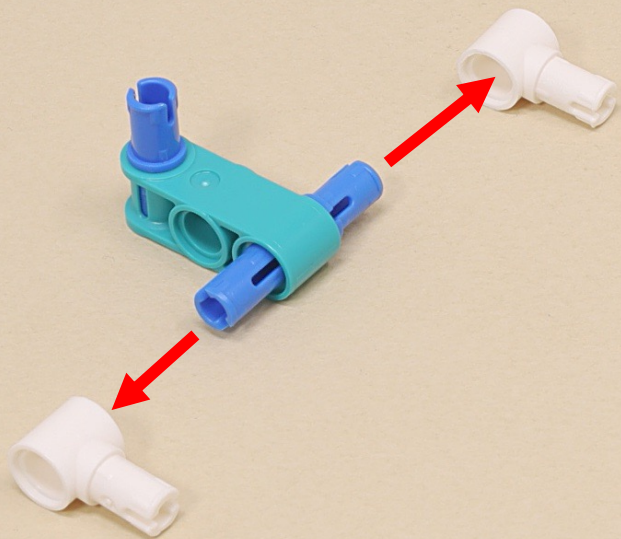


(8 x)

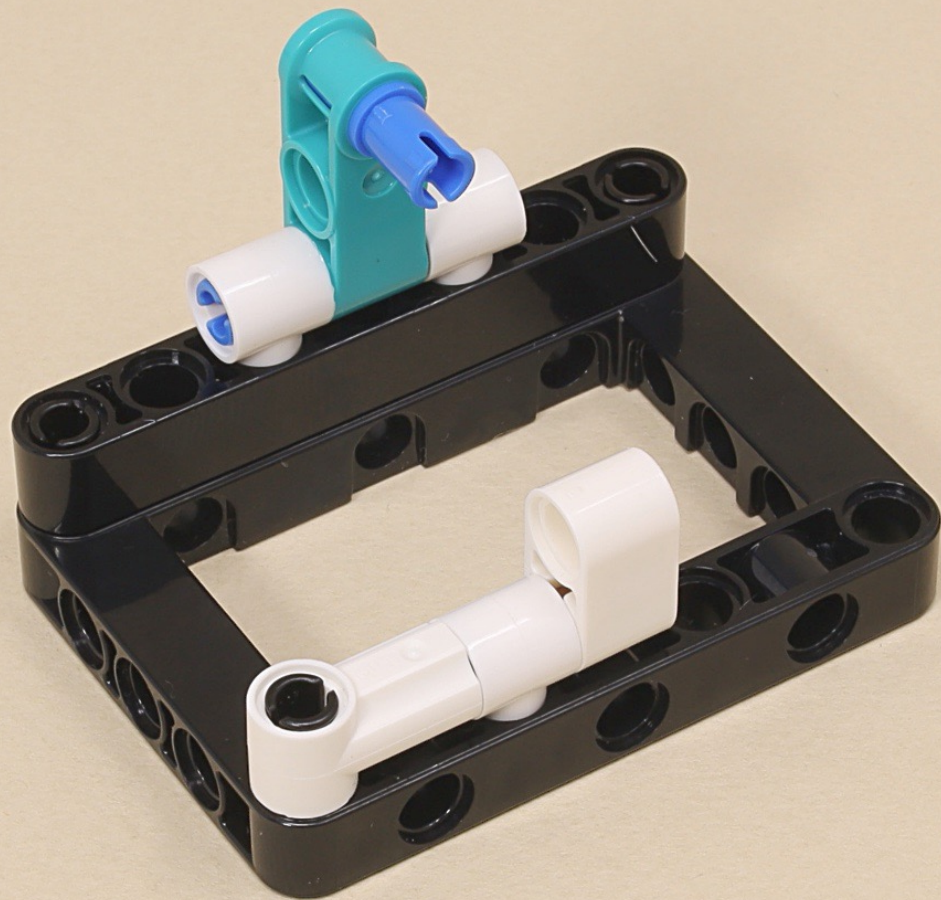


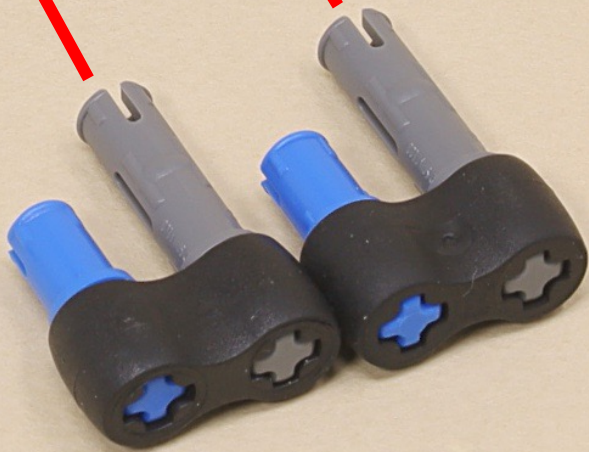
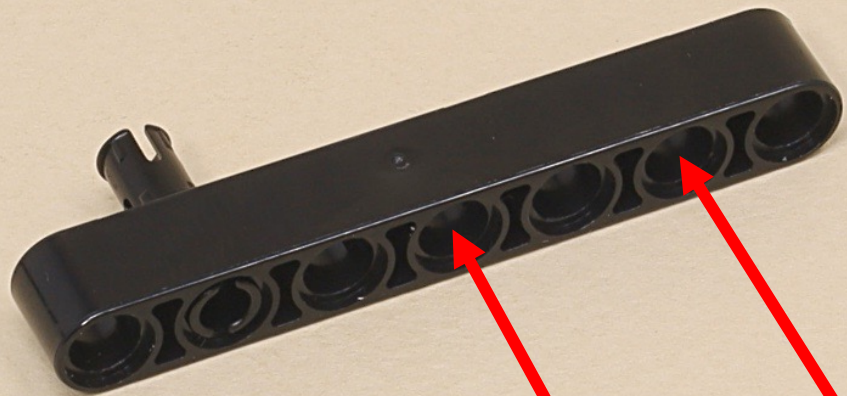


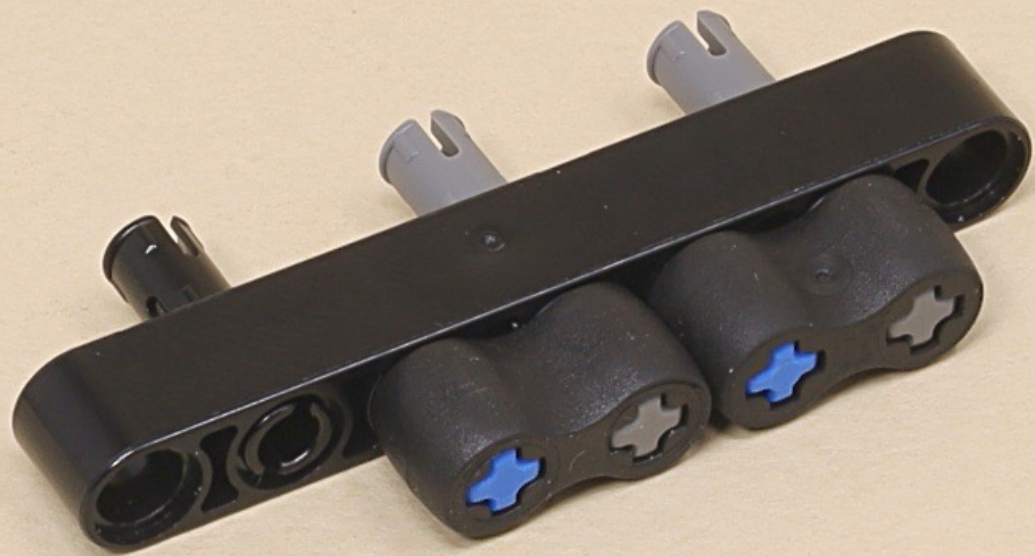


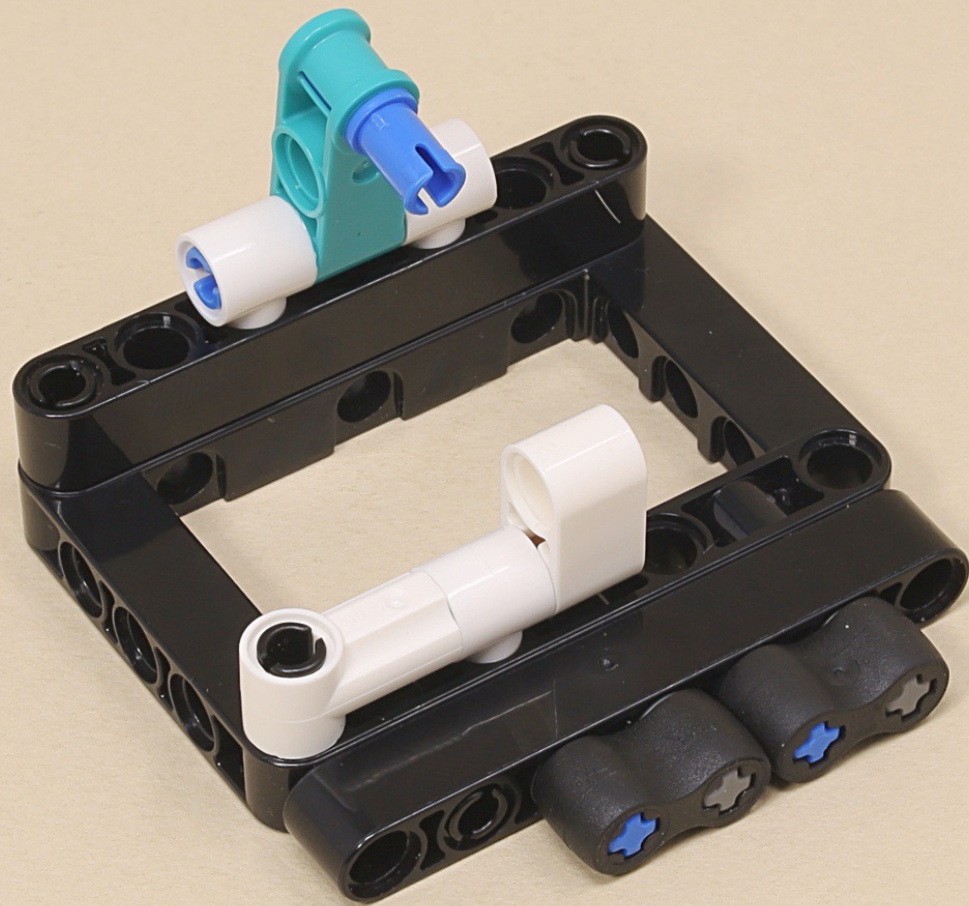


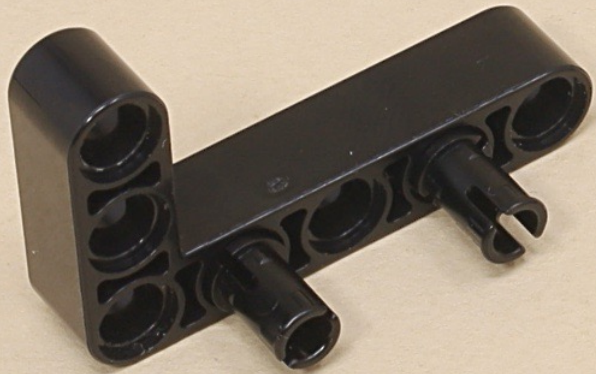


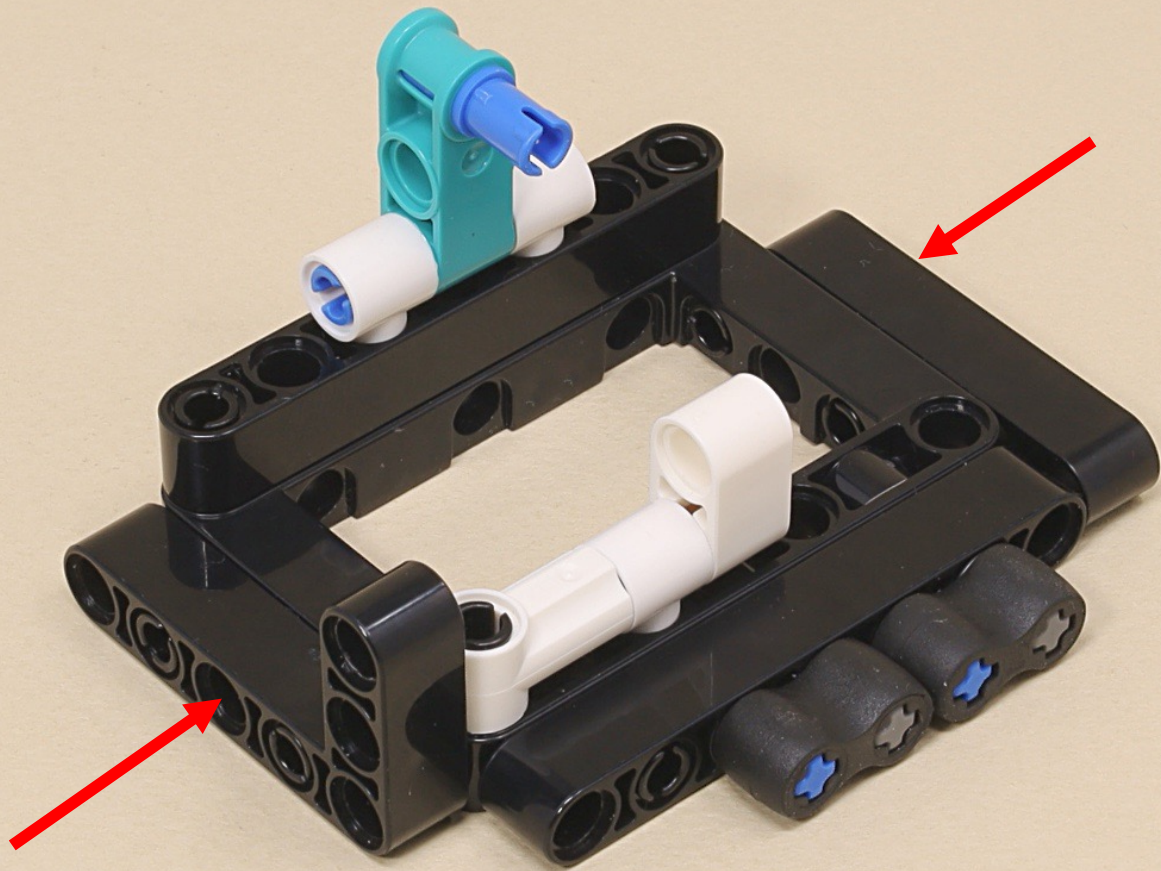


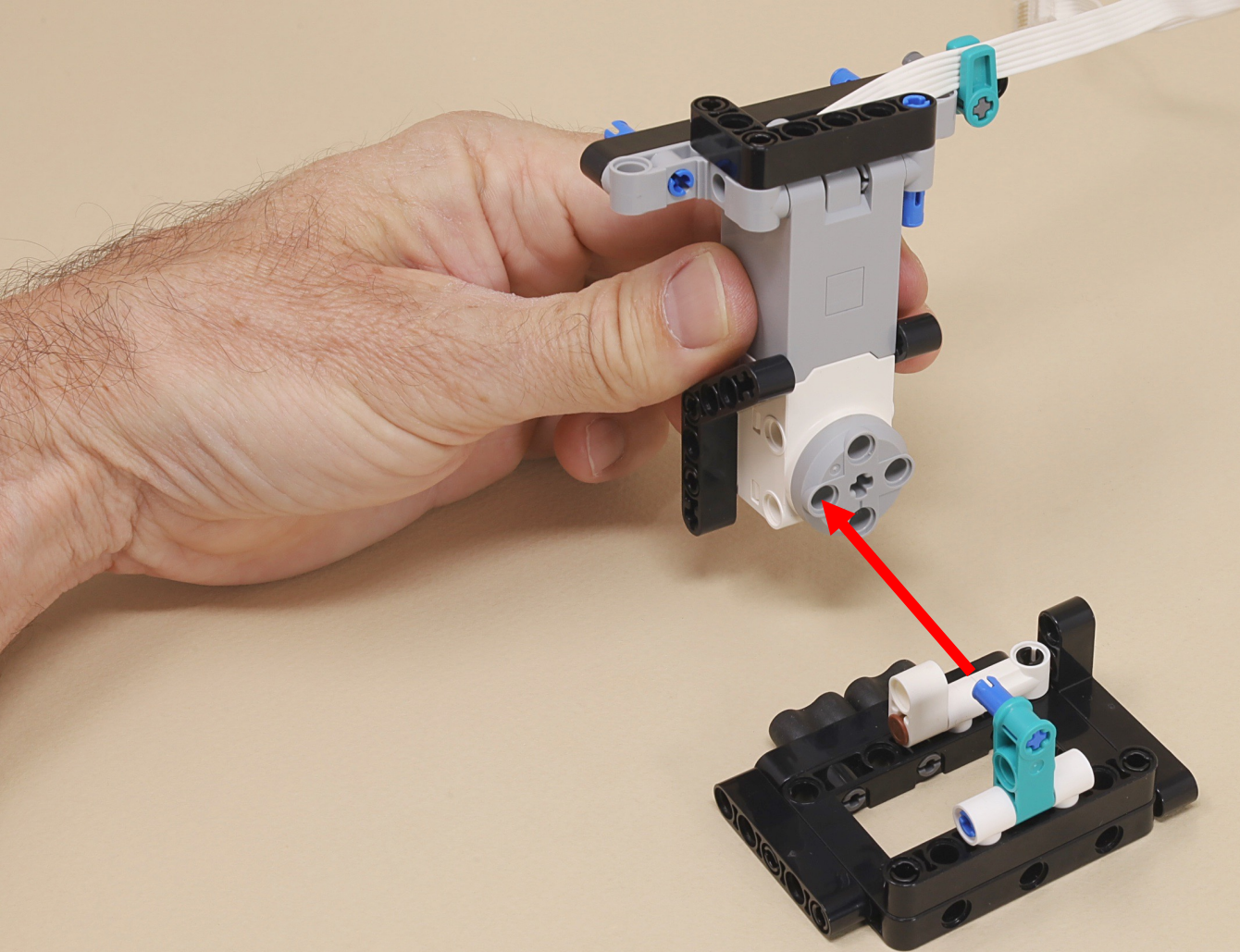


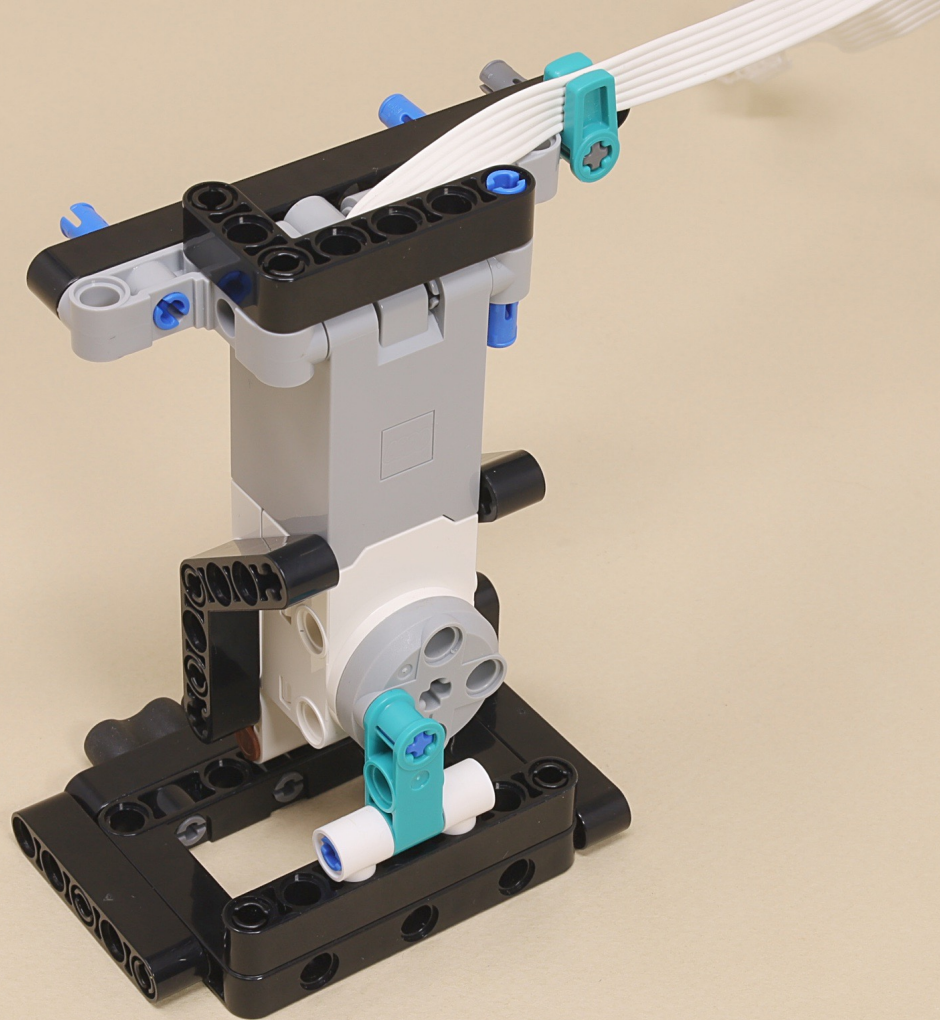


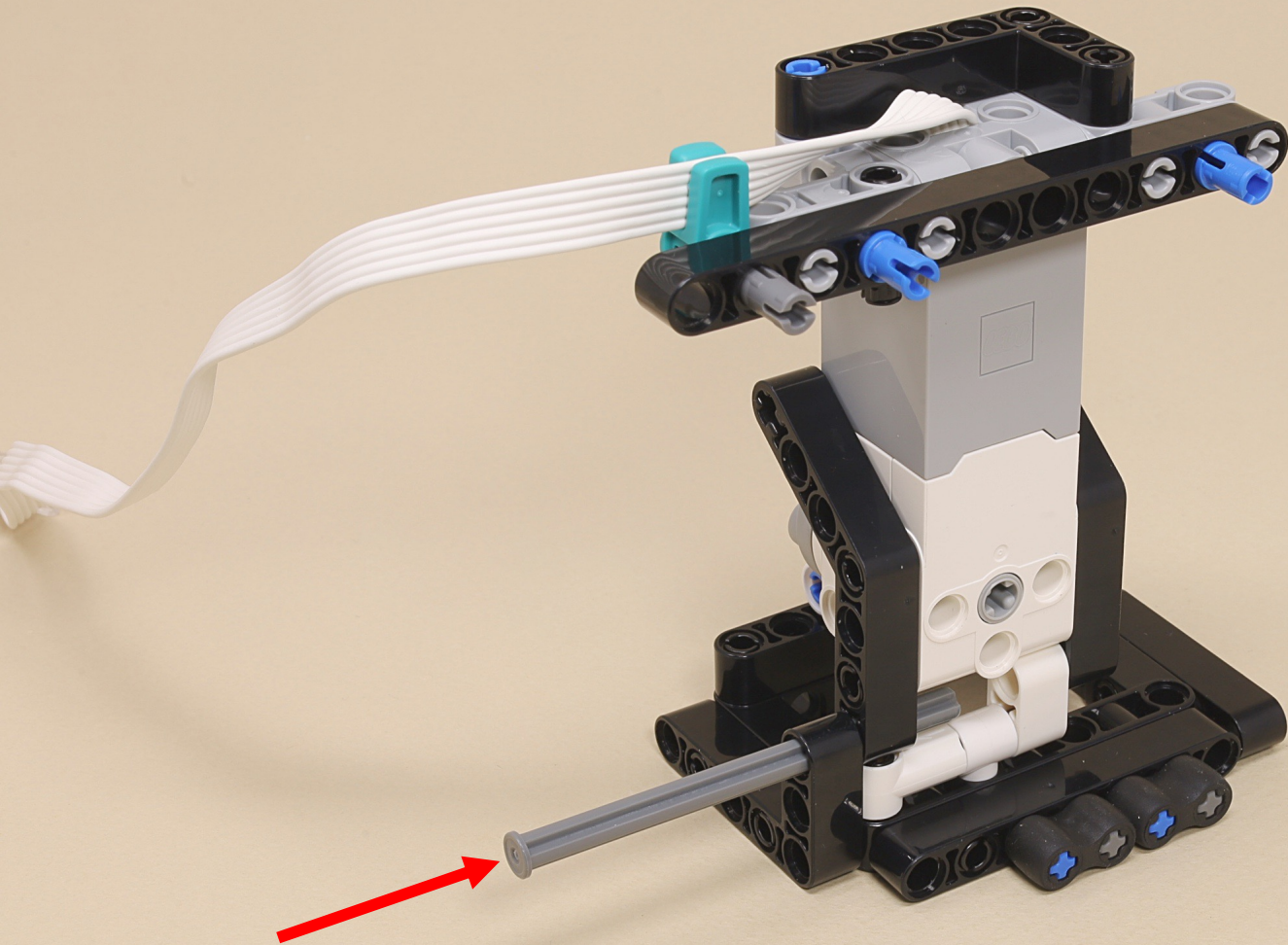


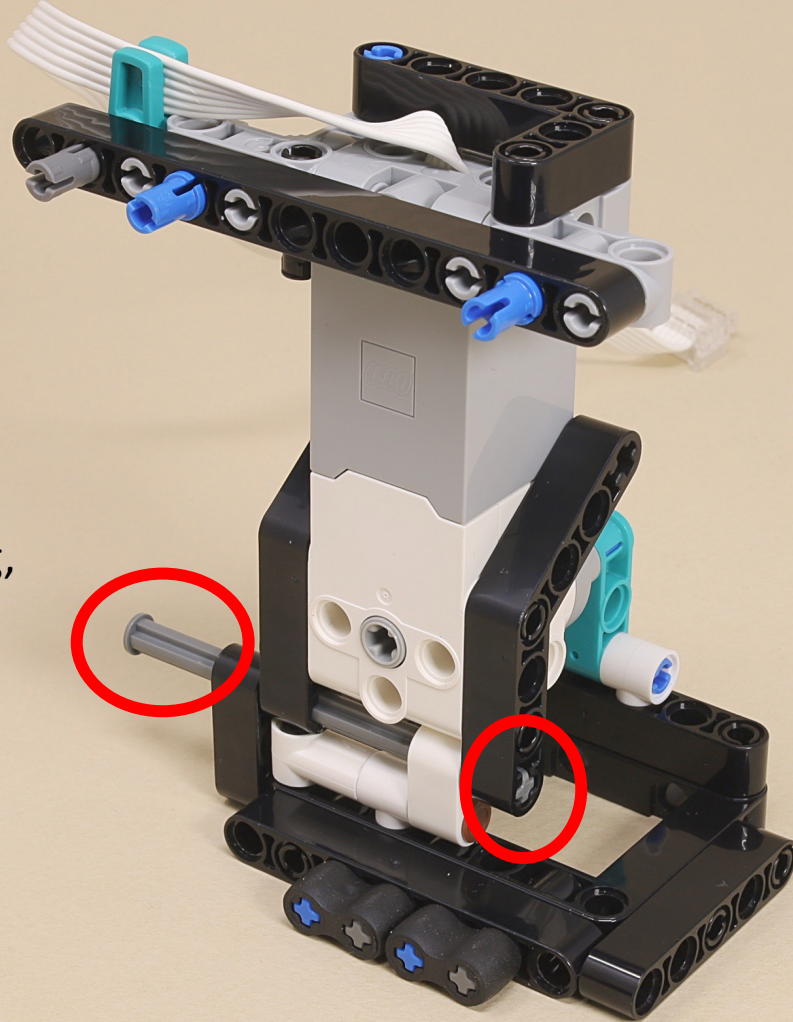








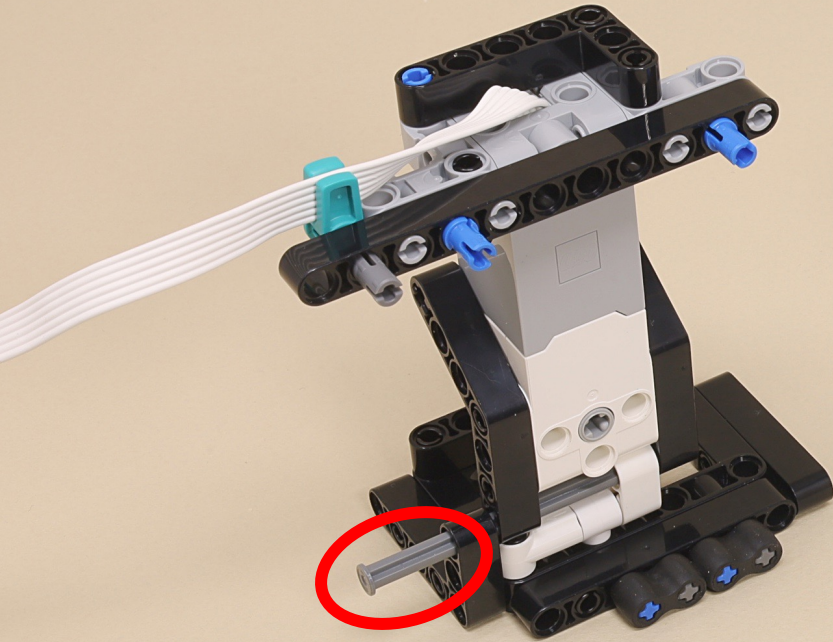




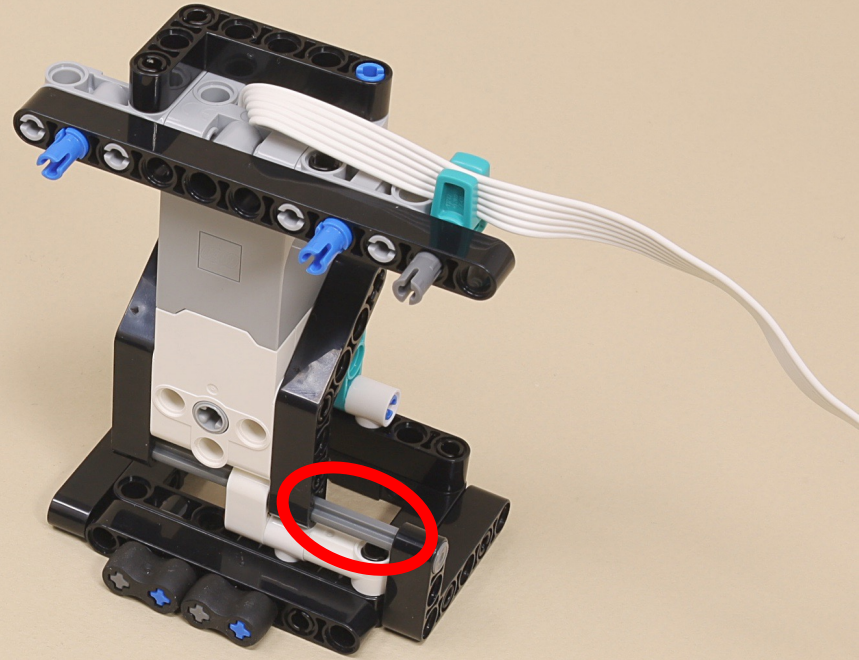
Unlike the other leg,
do **not** push this
axle all the way in.

Push the axle in just
until it becomes flush
with this beam on the
other side.

With both leg motors at their zero positions, the long axles are adjusted differently.



Left Leg



Right Leg



11



11

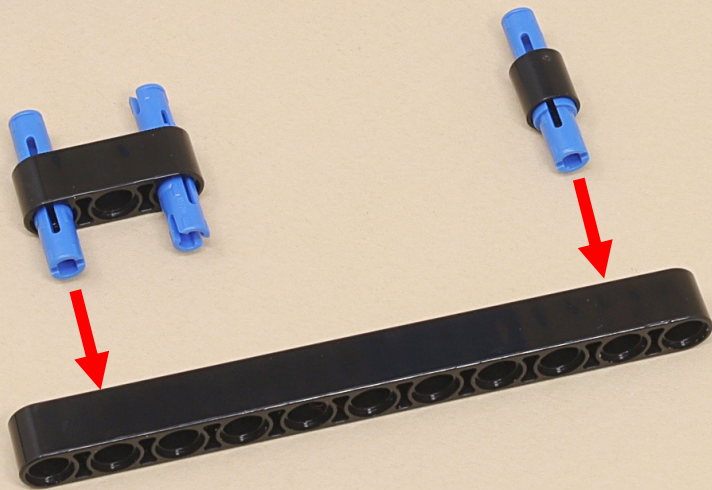
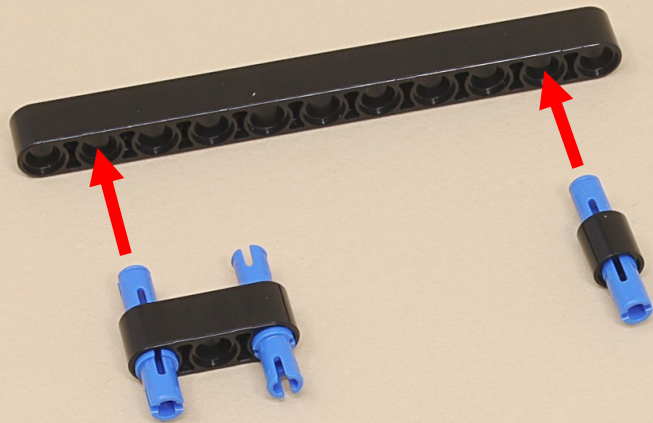


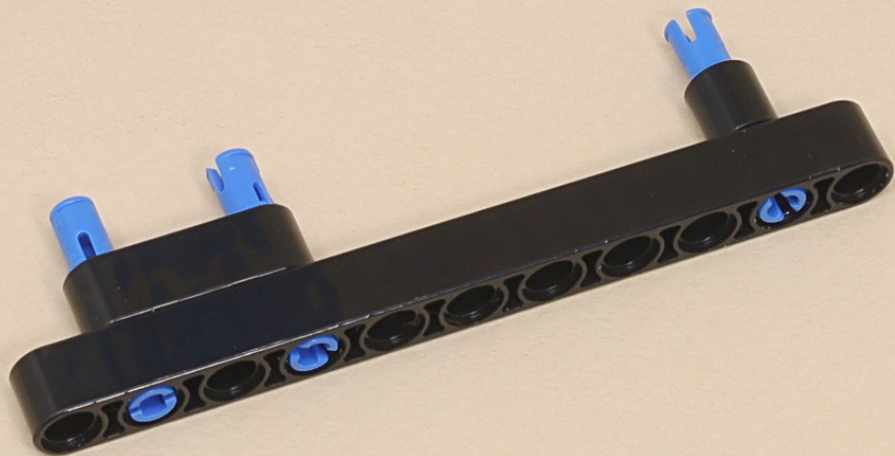
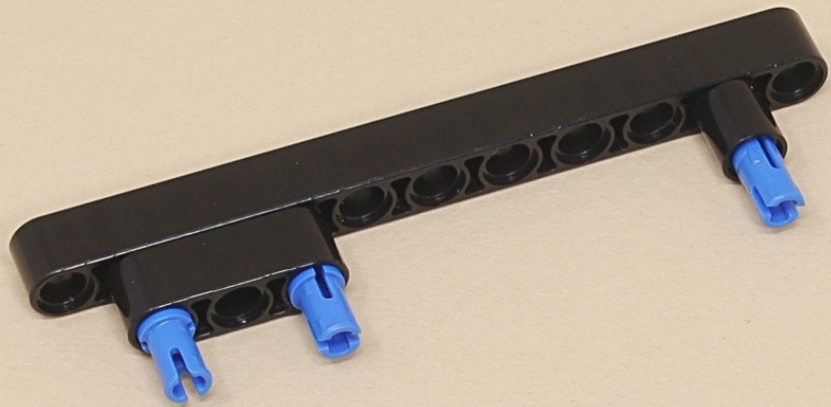
11



(10 x)



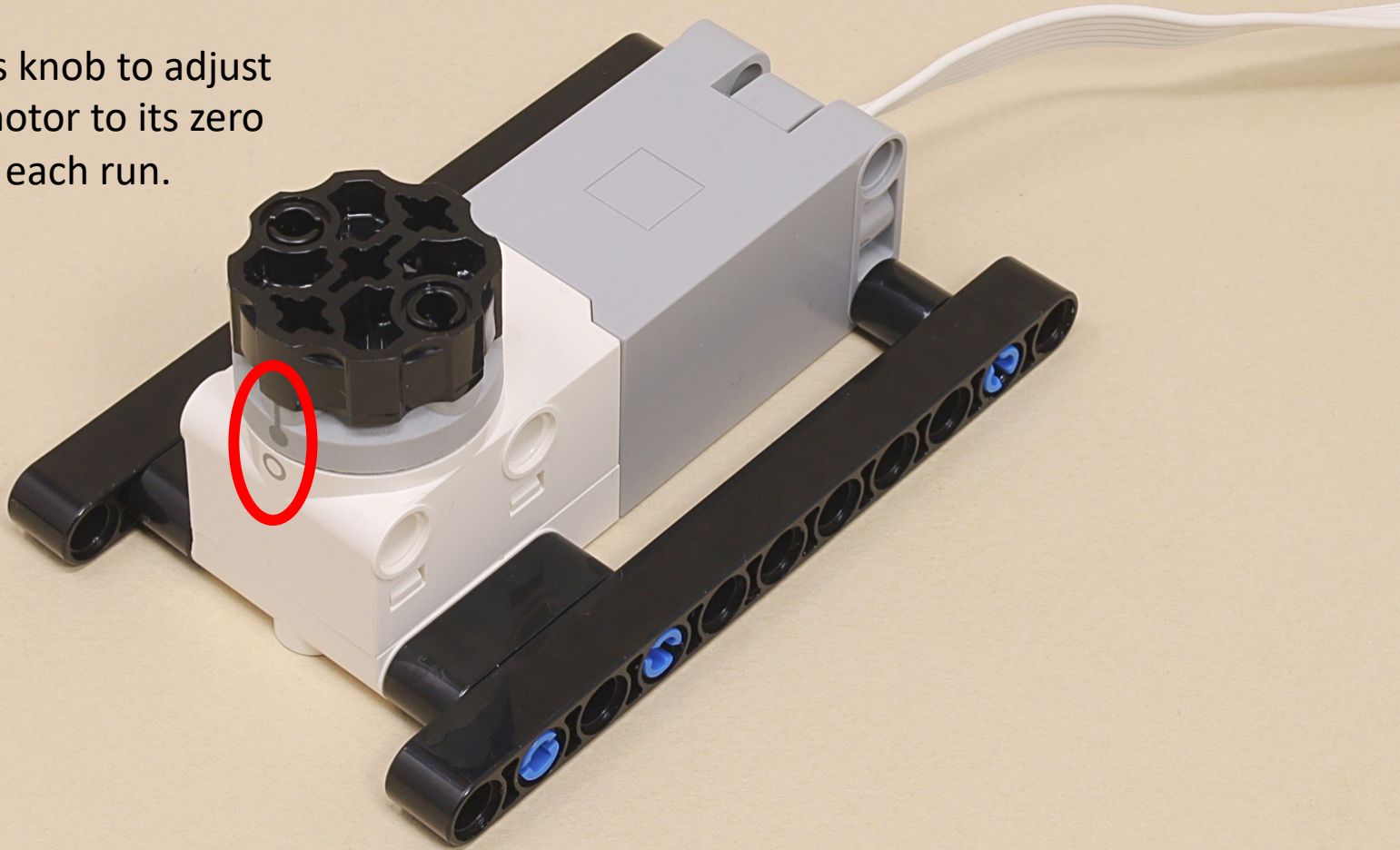


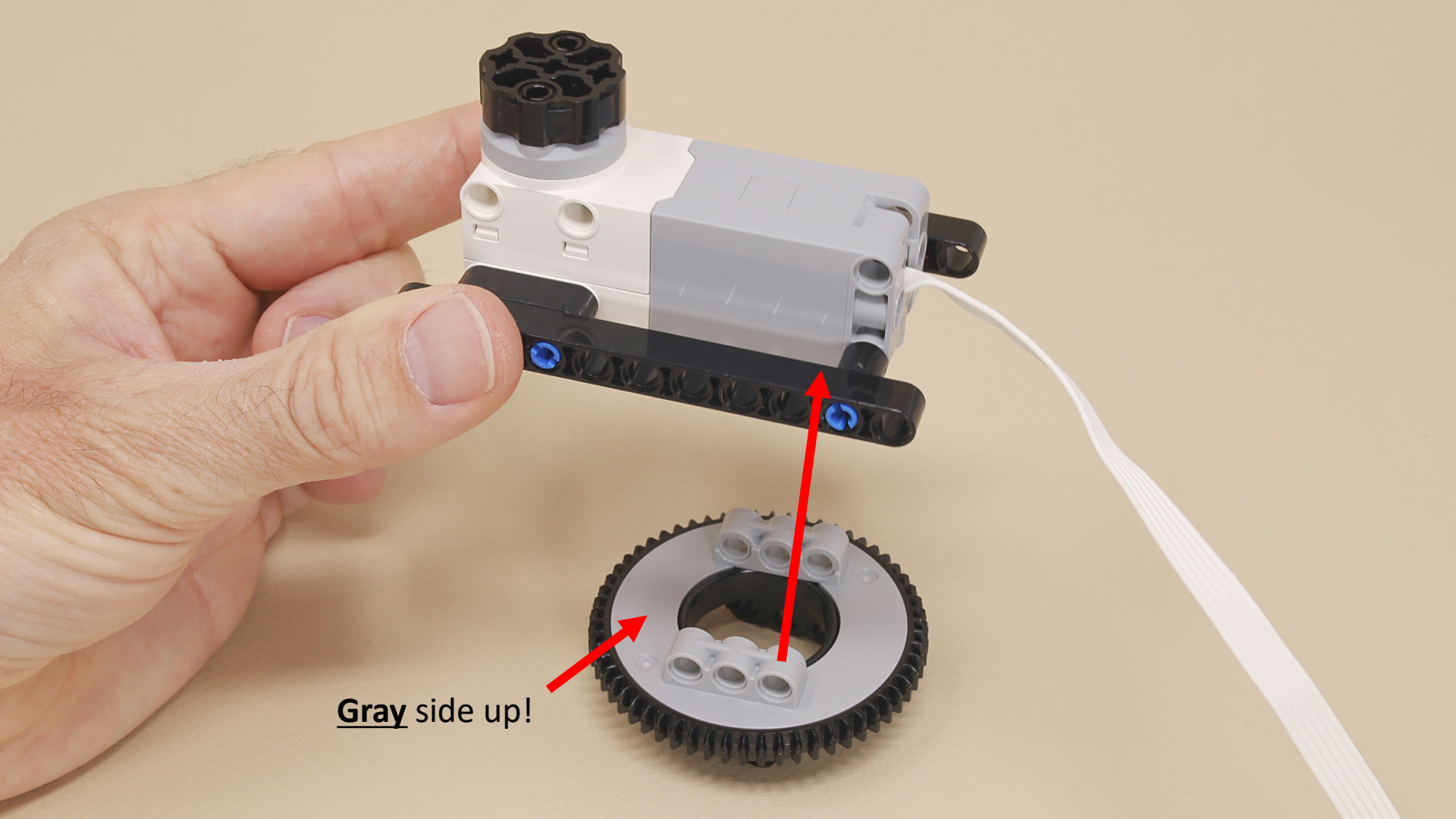




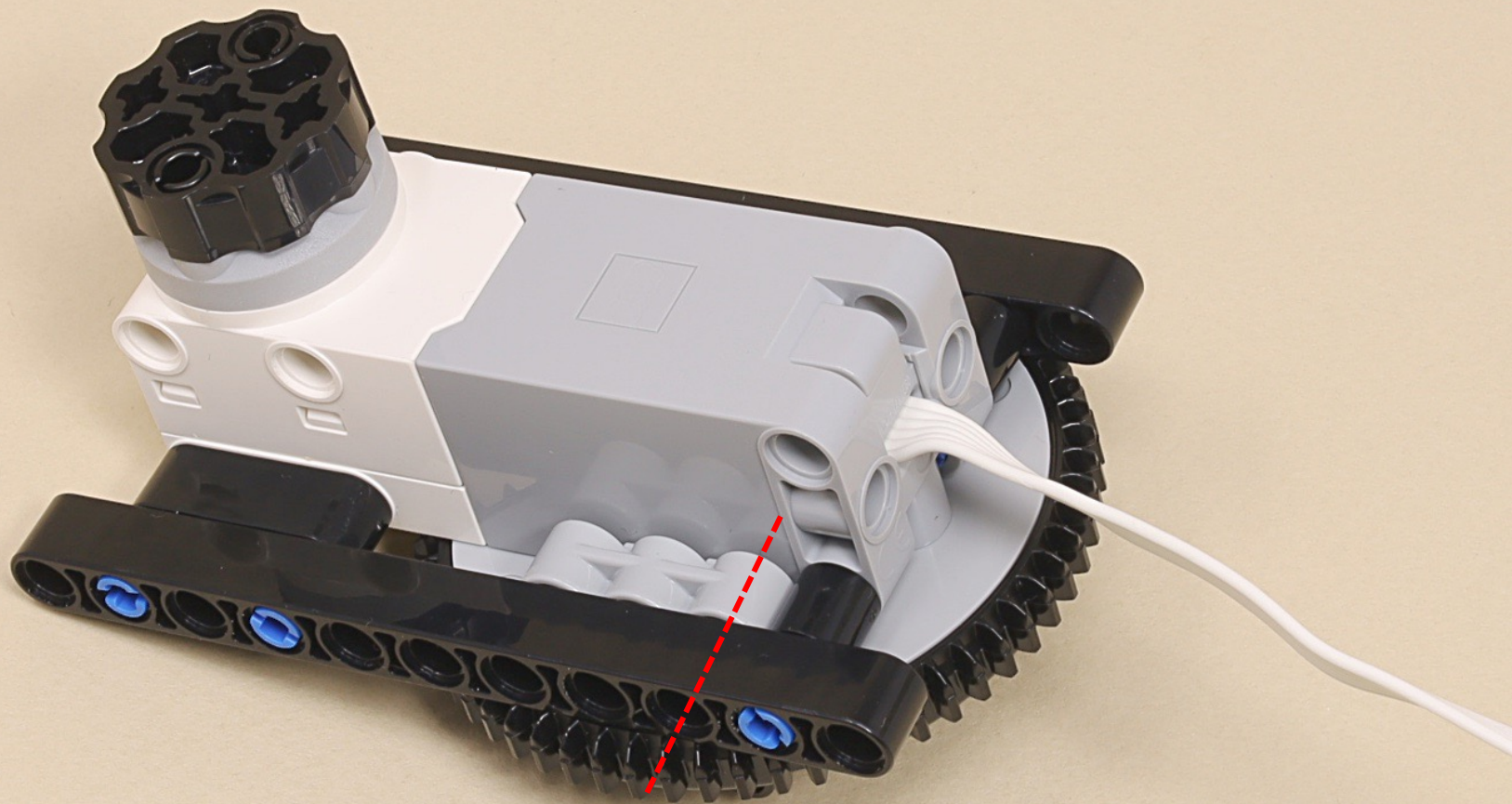


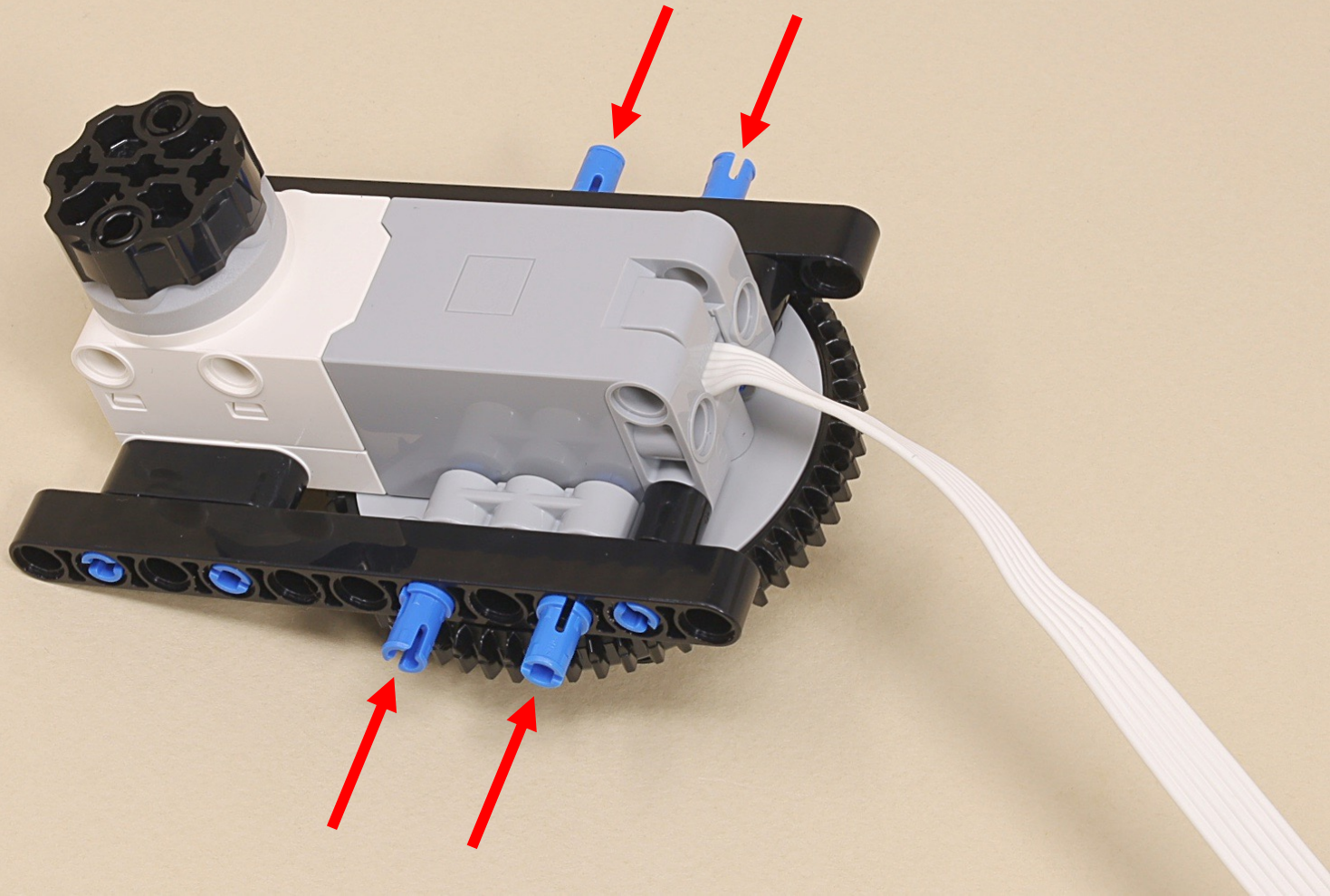
You can use this knob to adjust the turntable motor to its zero position before each run.

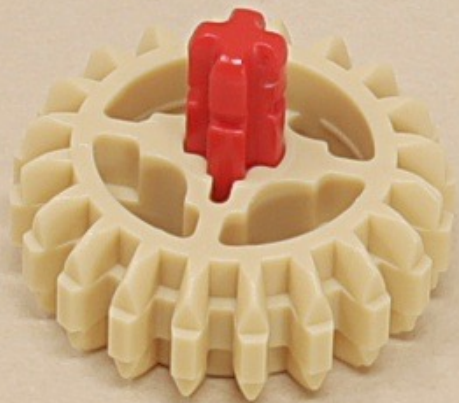




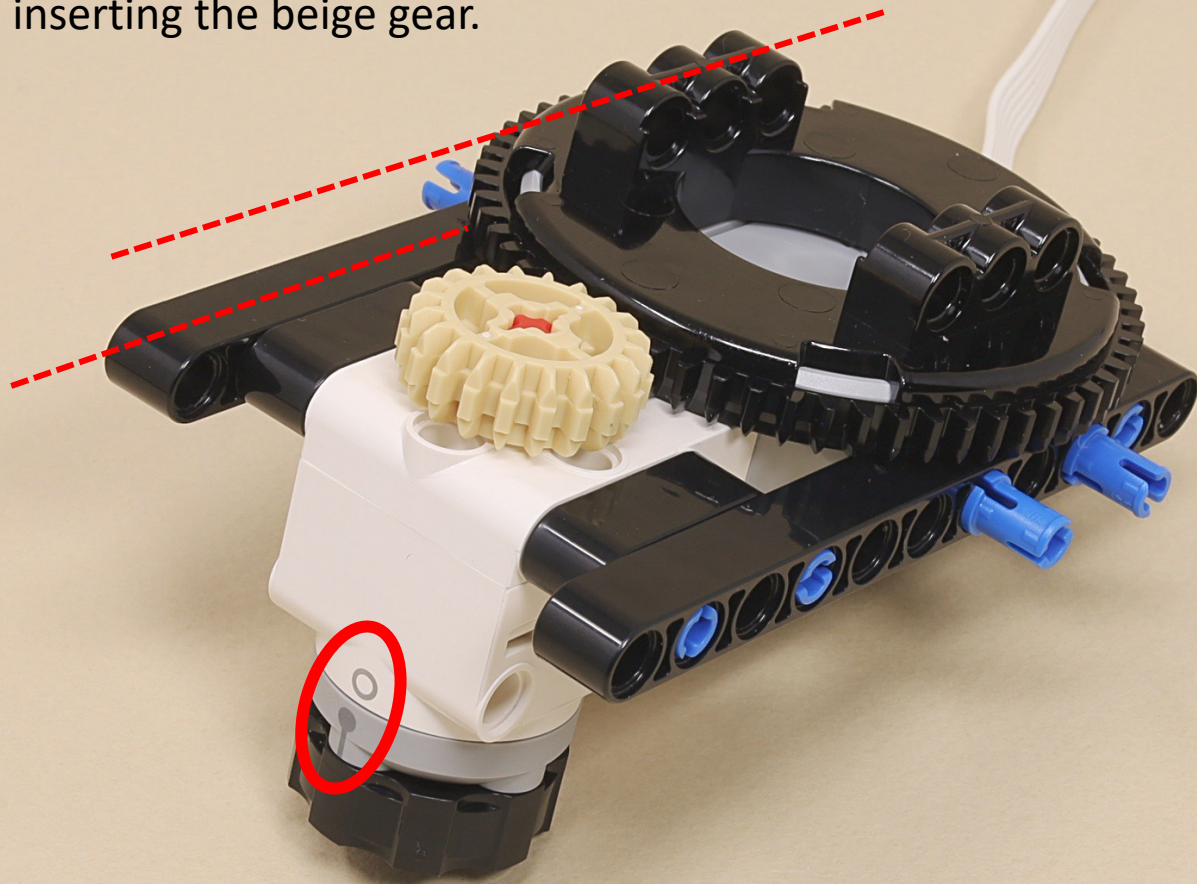
Gray side up!

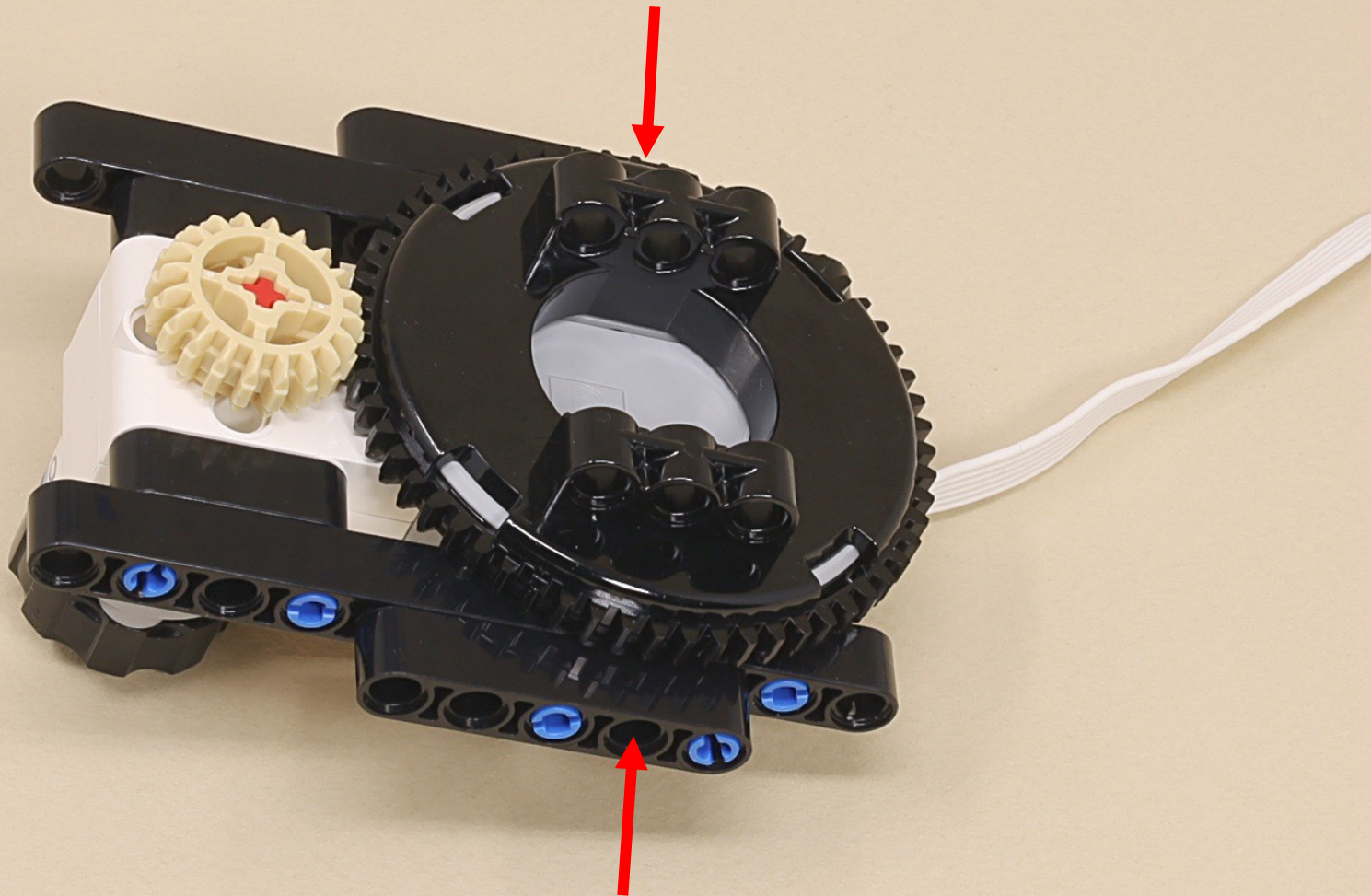


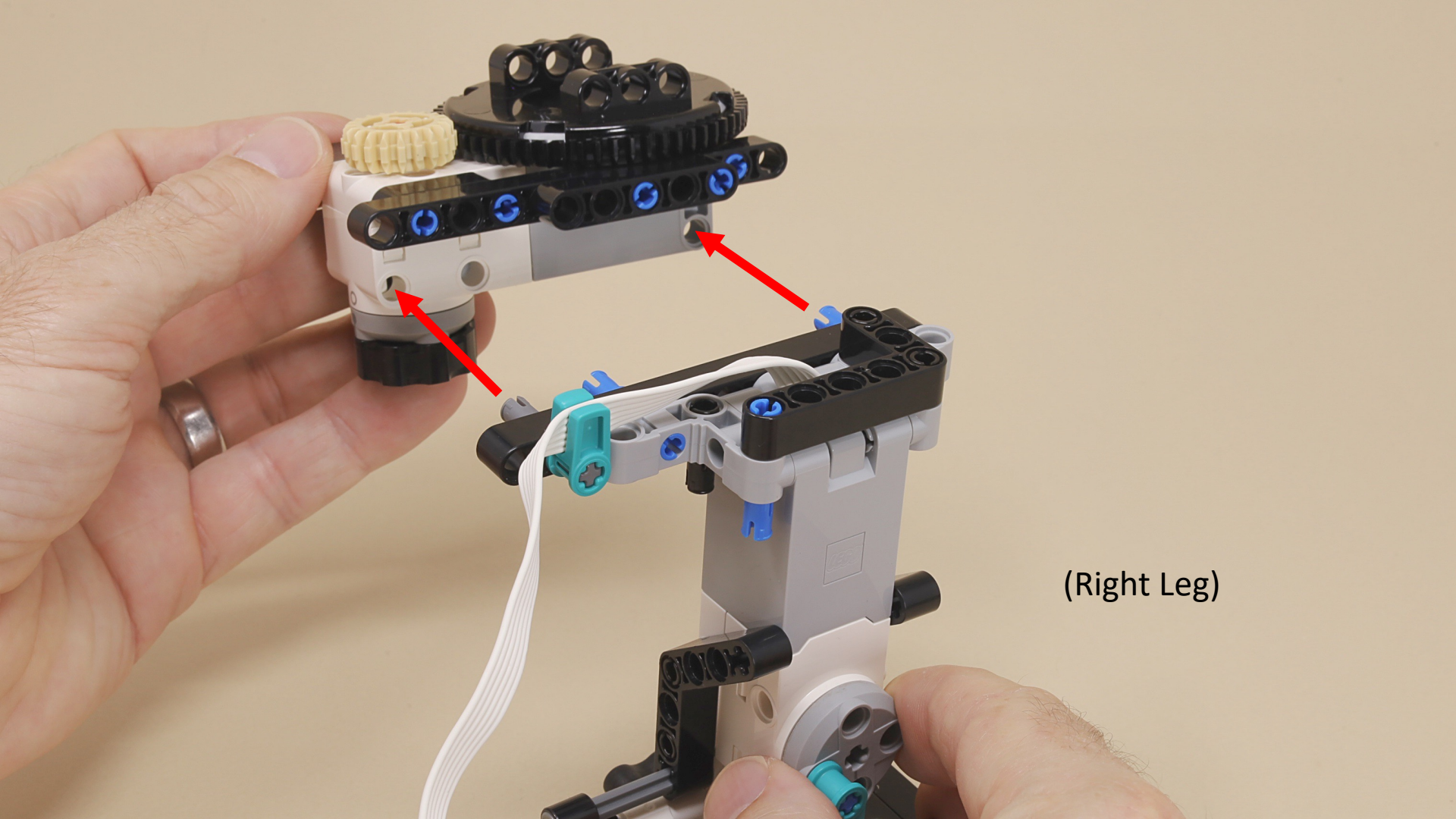




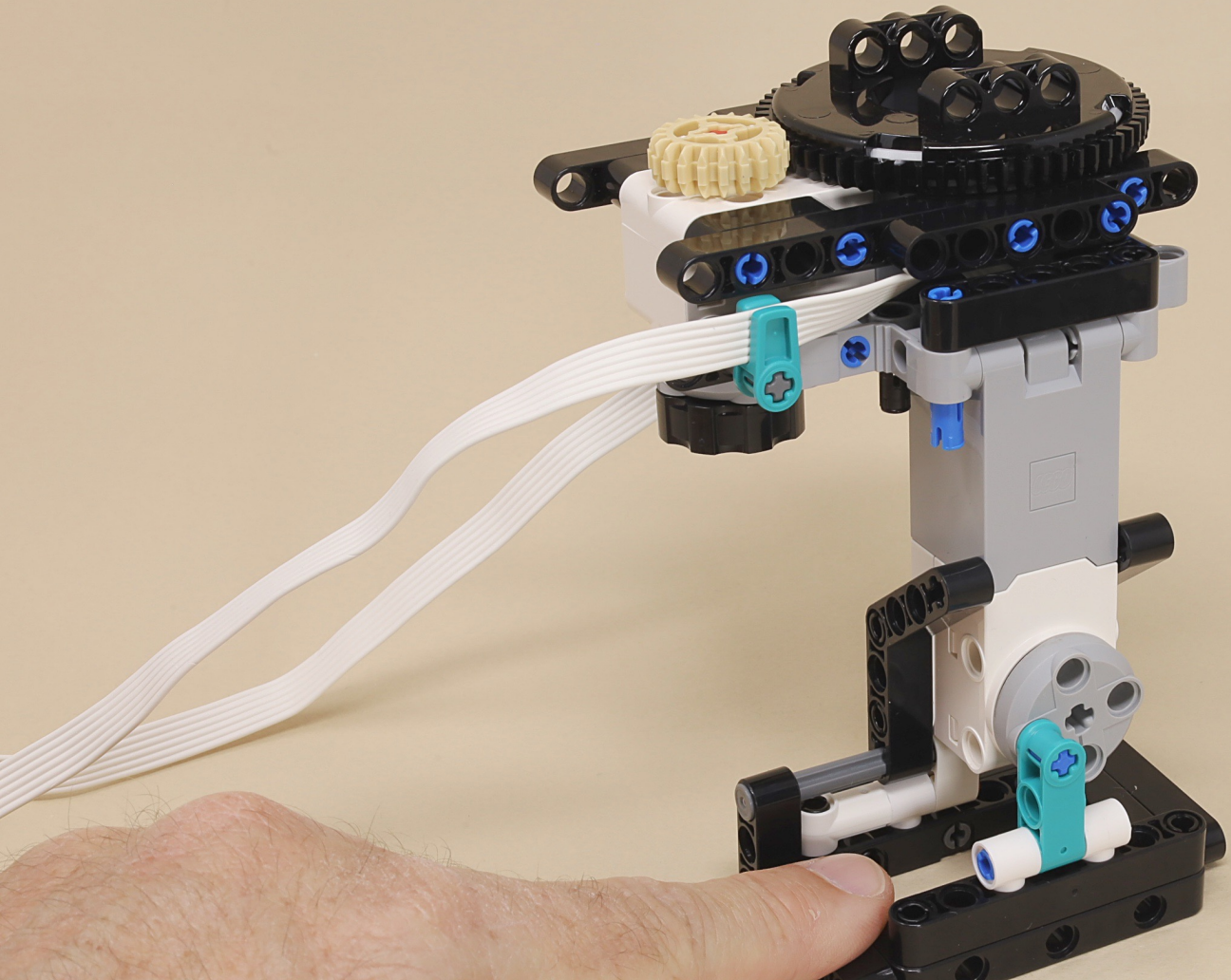
Align the black side of the turntable as shown before inserting the beige gear.







(Right Leg)



Route the turntable wire like this before inserting the other leg.

