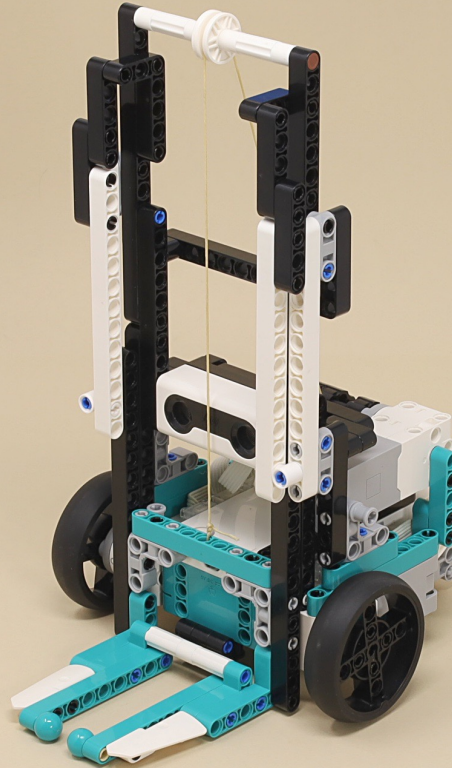


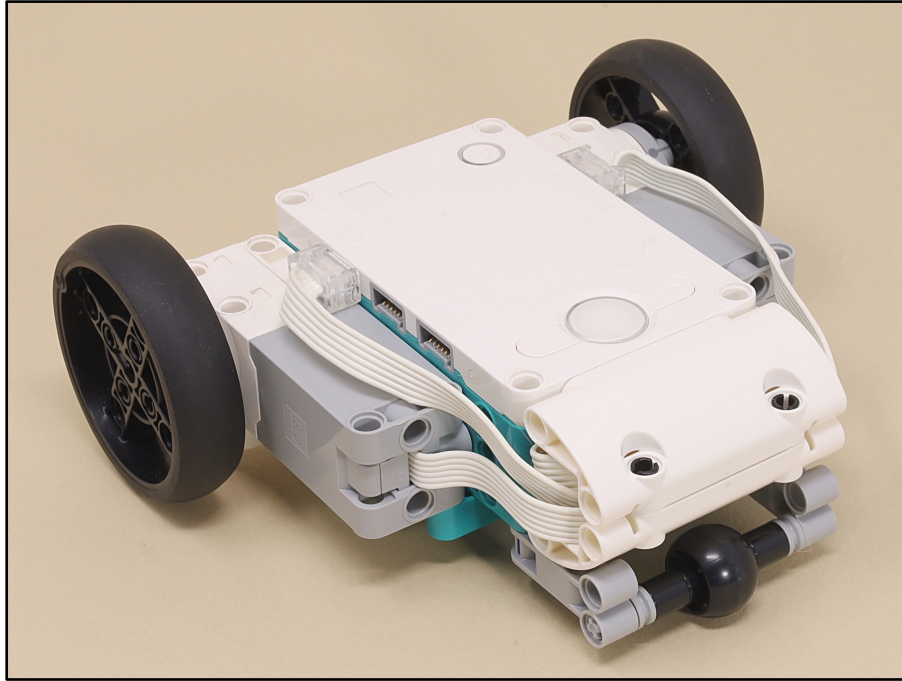
Forklift



Scroll for
building
instructions



First, build:



Front Drive Platform

...then continue here to complete the Forklift 



15



13



11



11

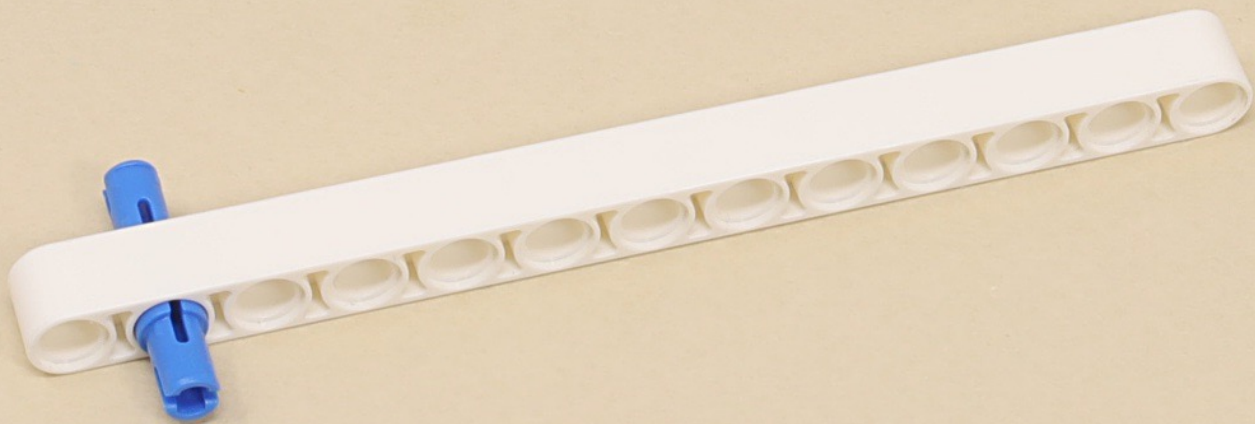


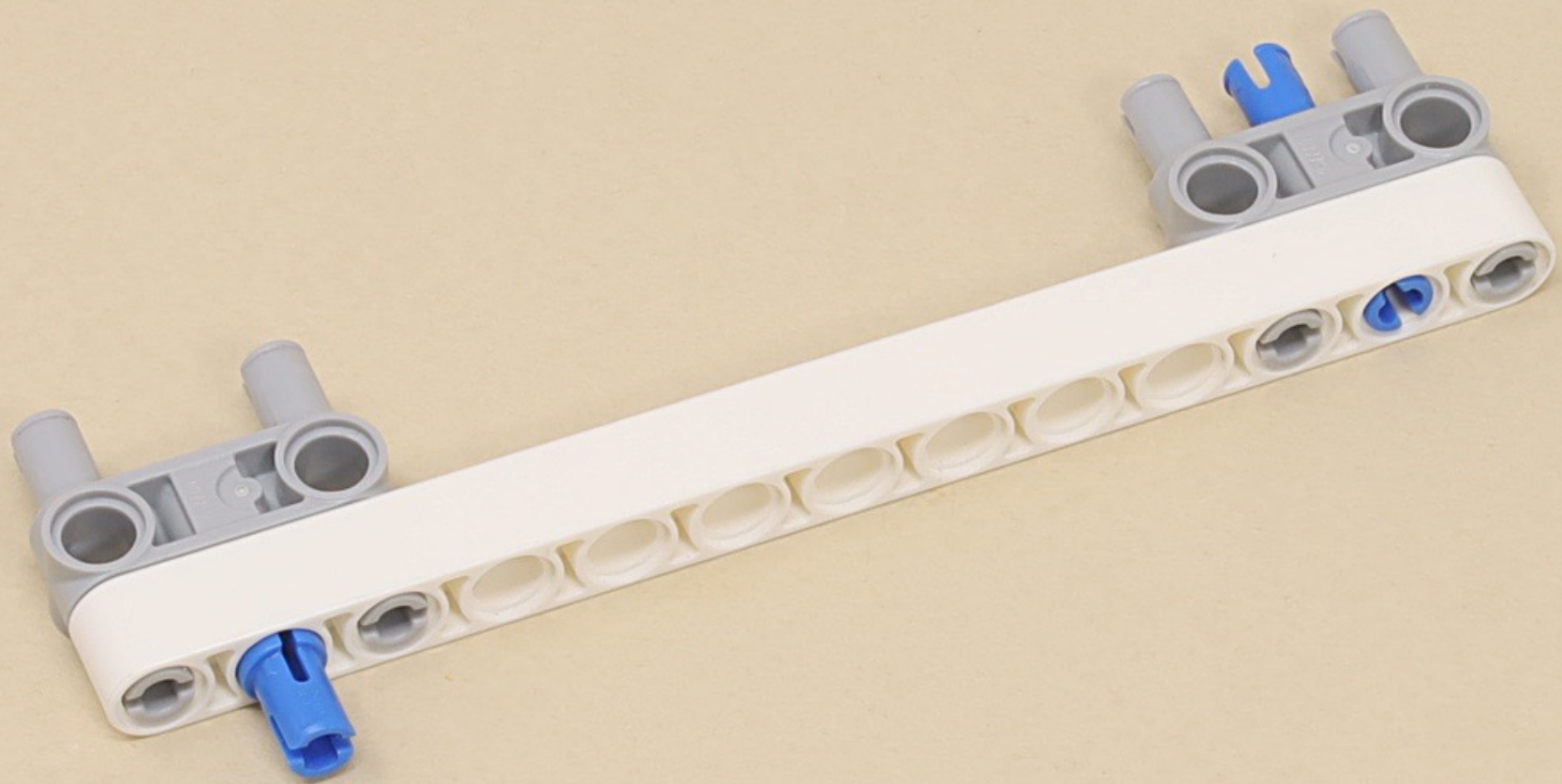
(5 x)

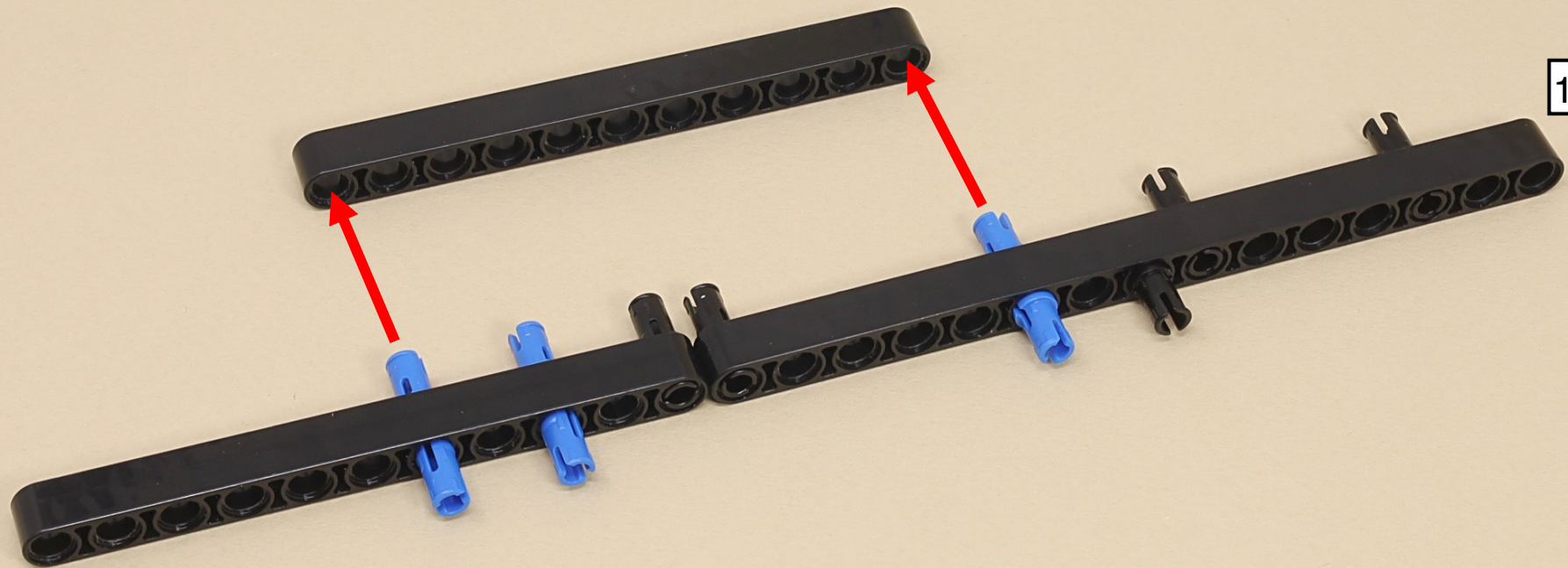


(5 x)

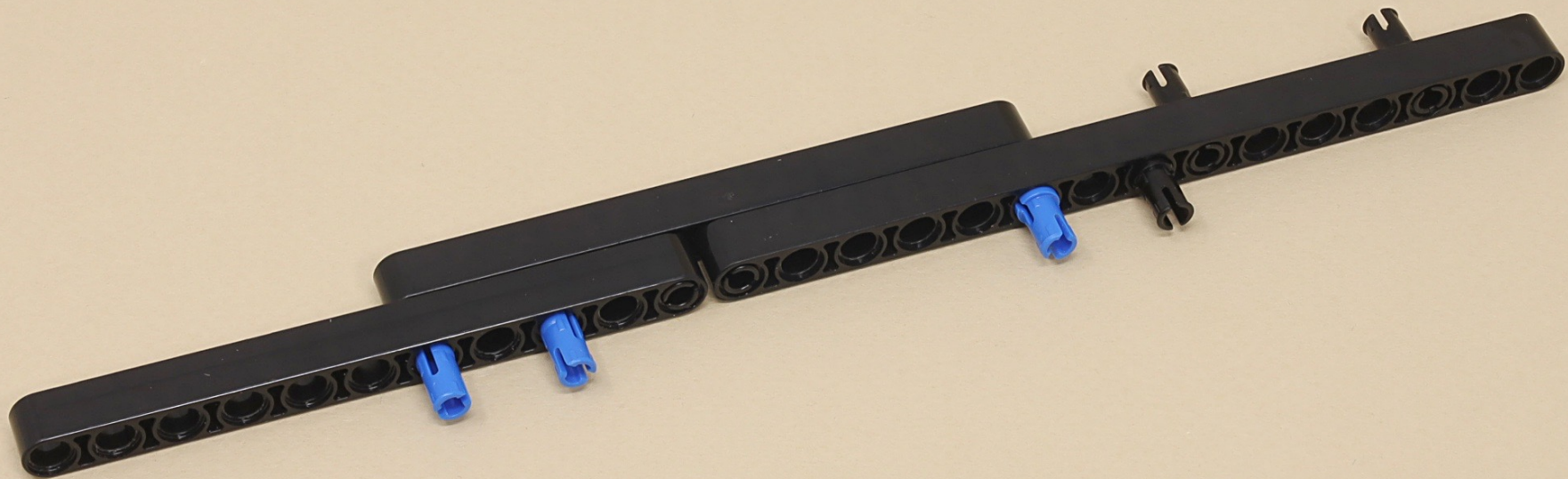


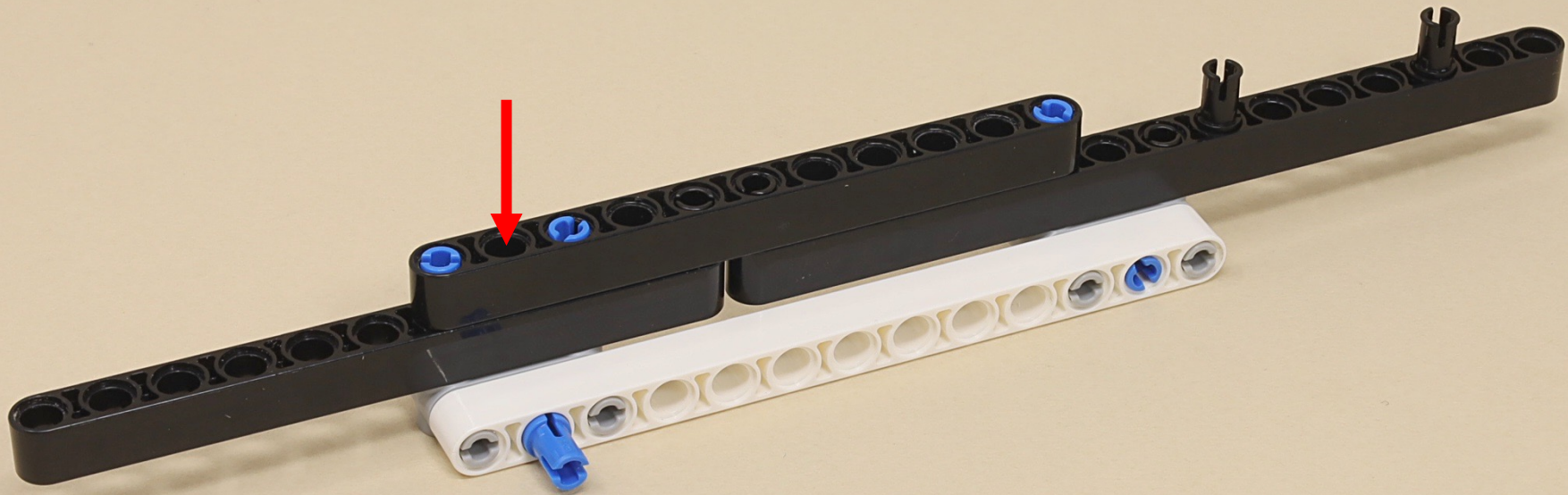






15





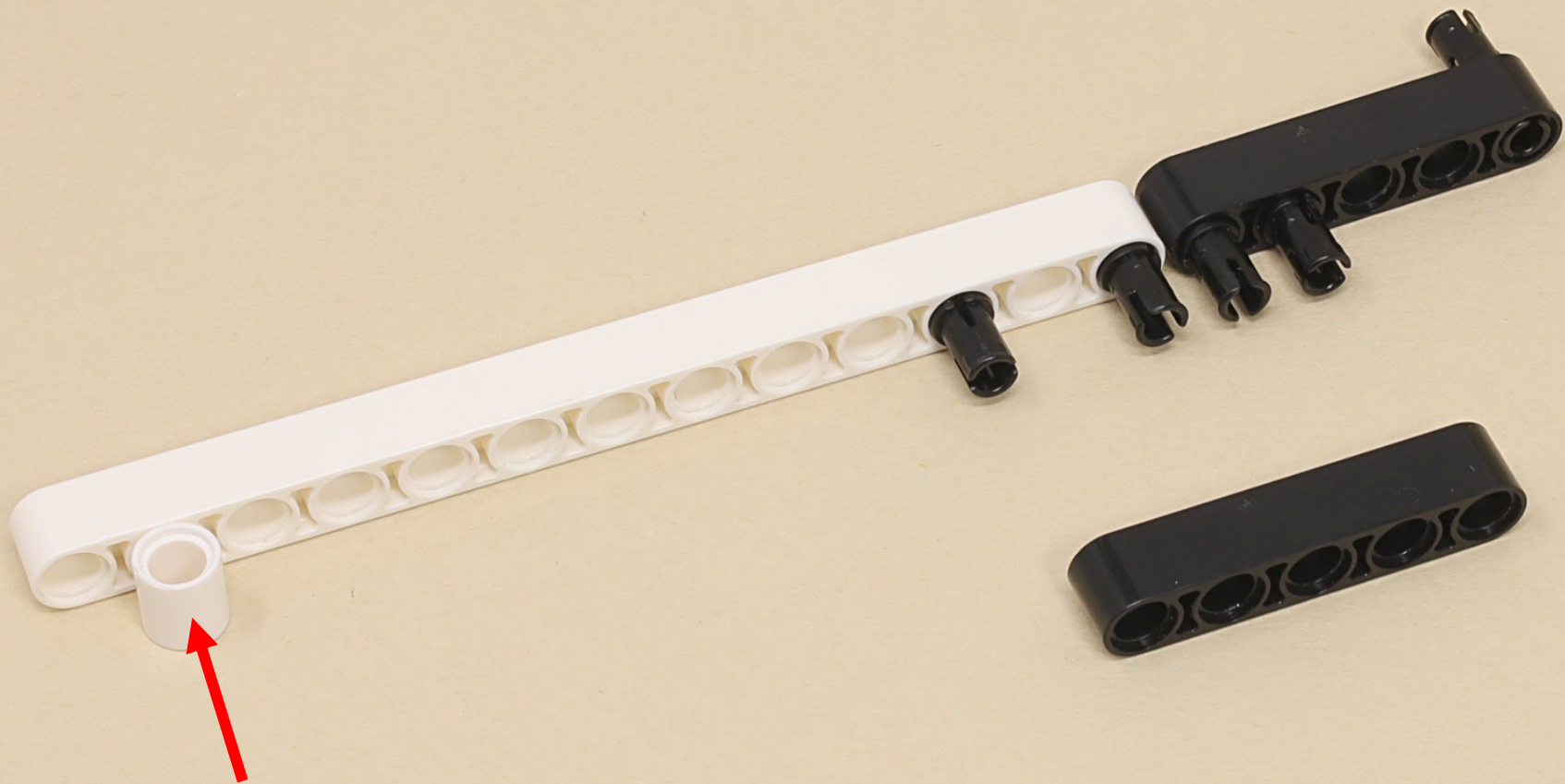


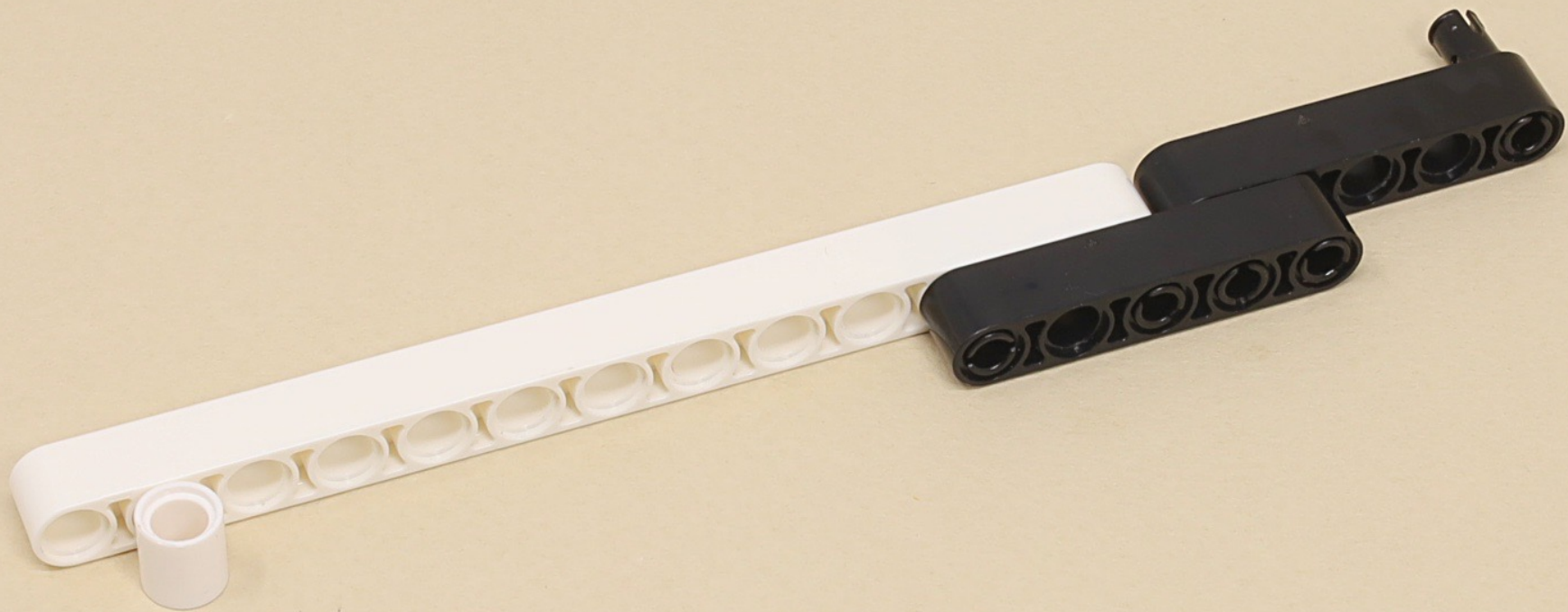
13

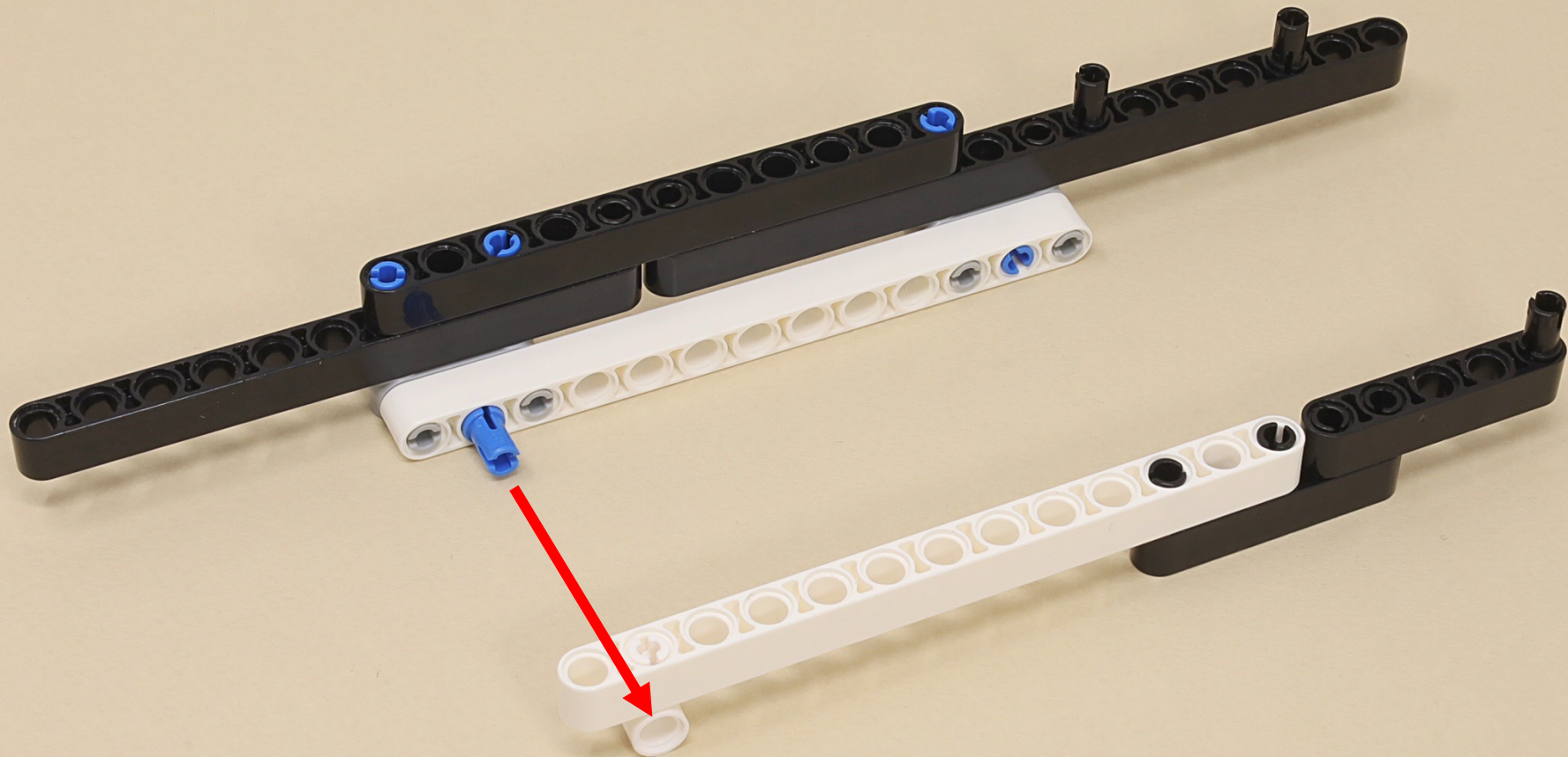


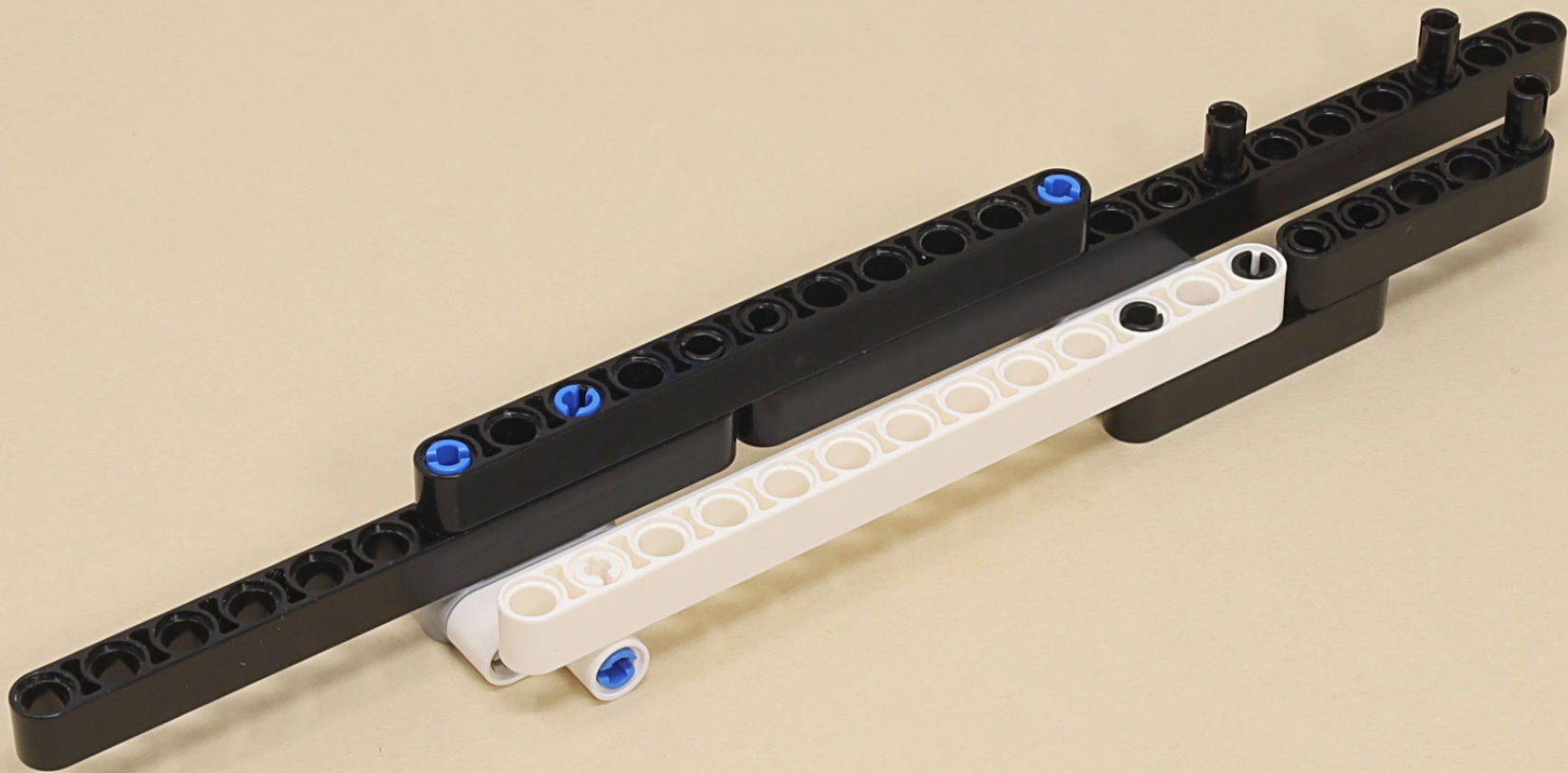
(5 x)

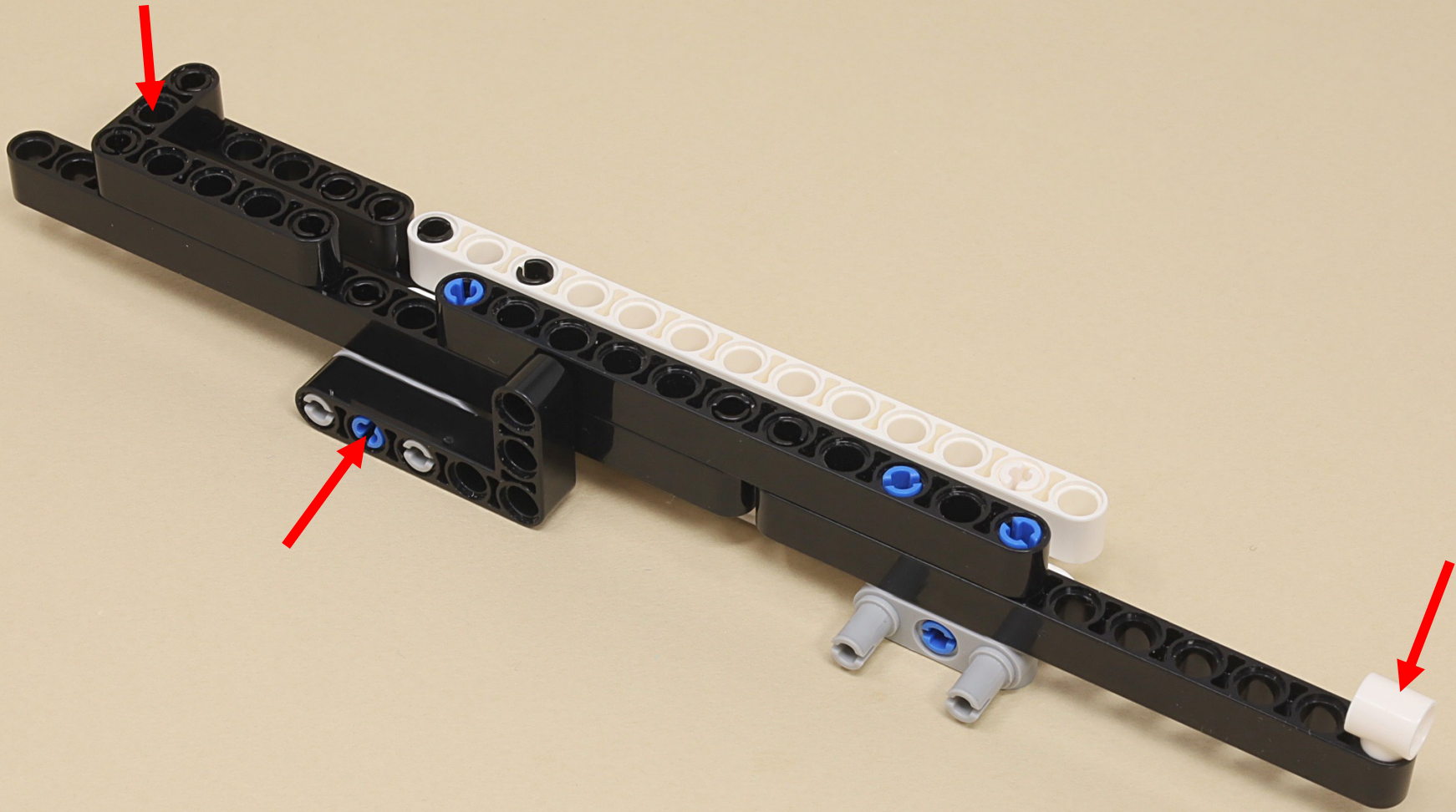














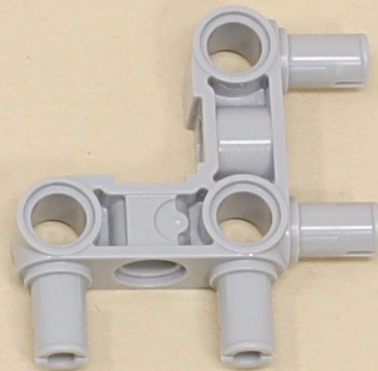
9

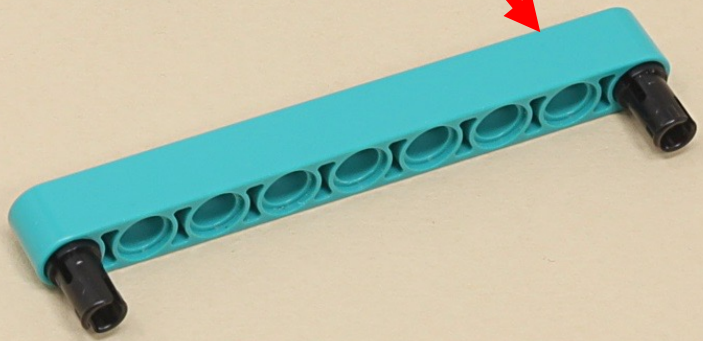
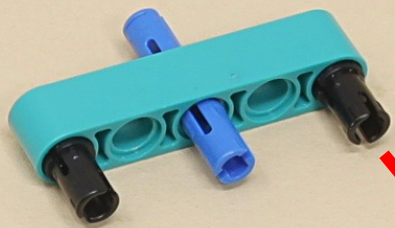
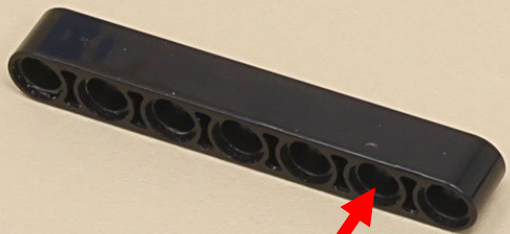


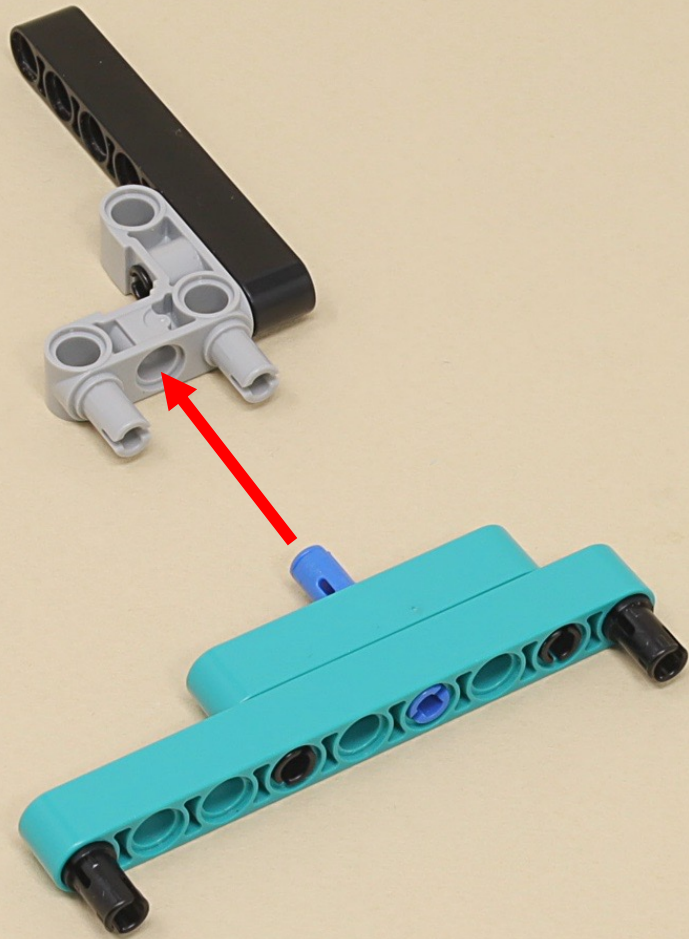
7

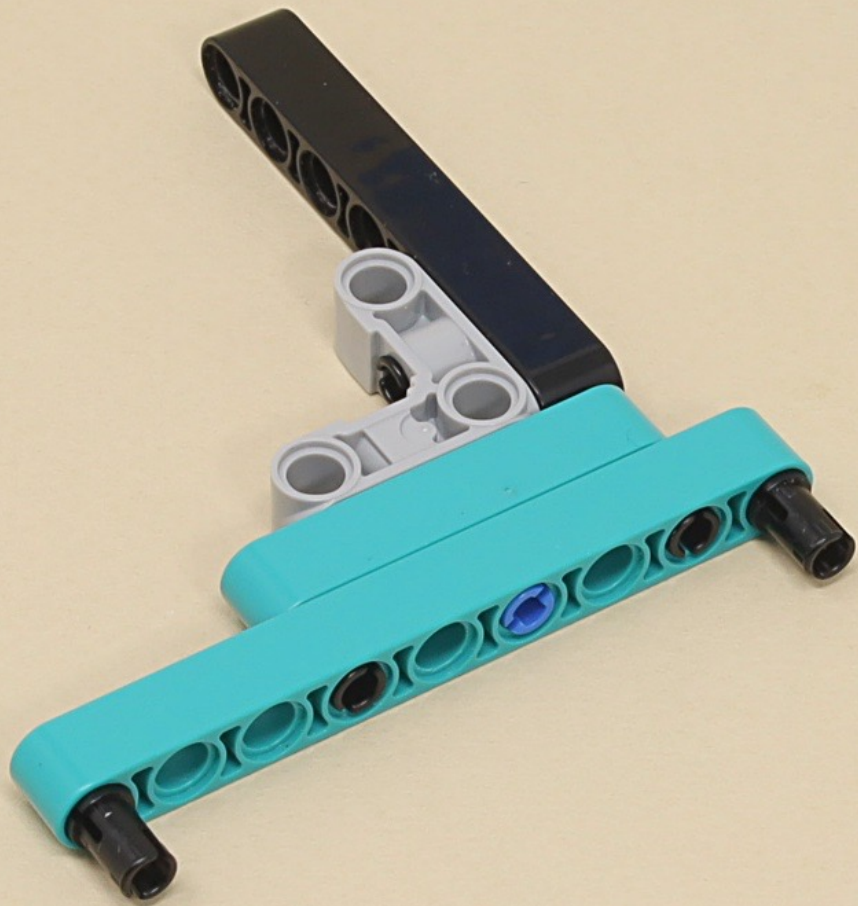


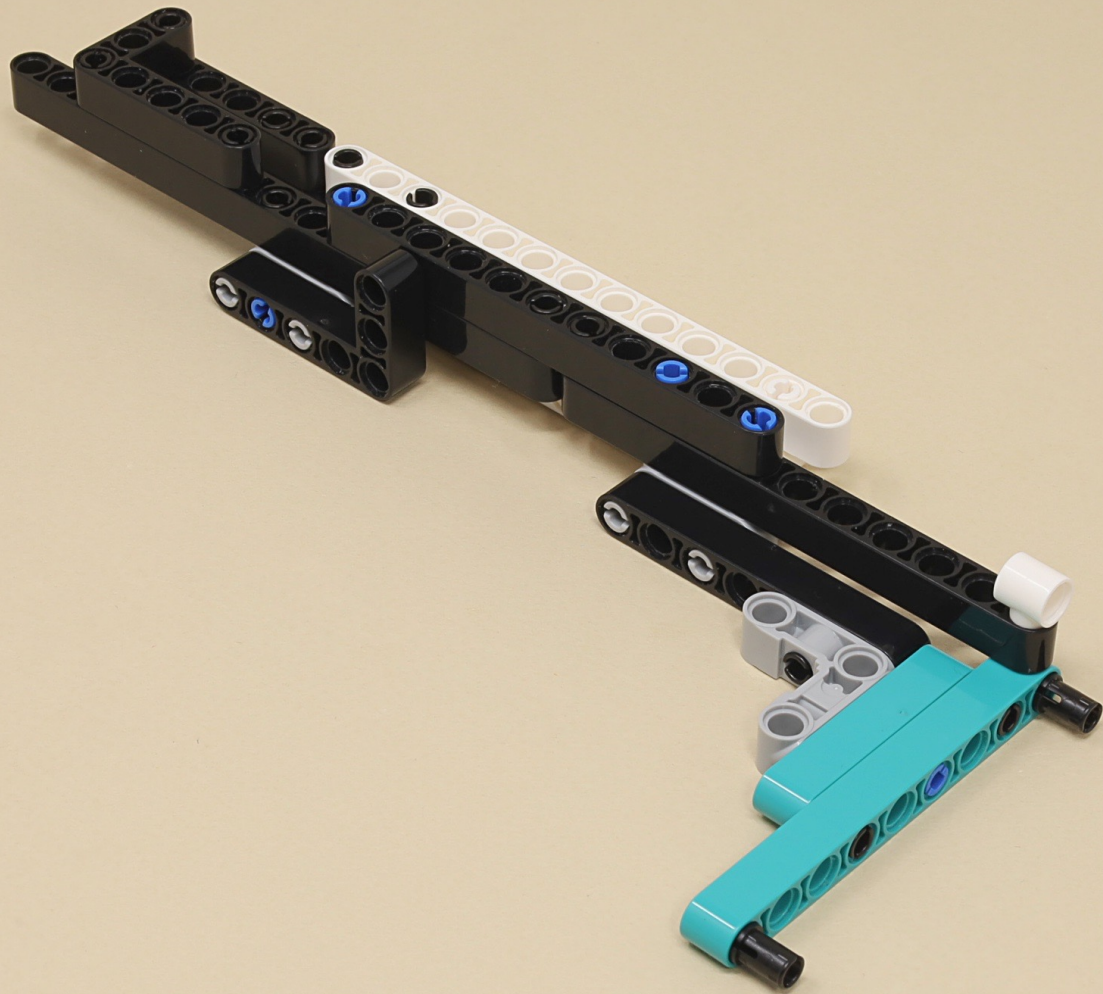
(5 x)













15



13



11



11

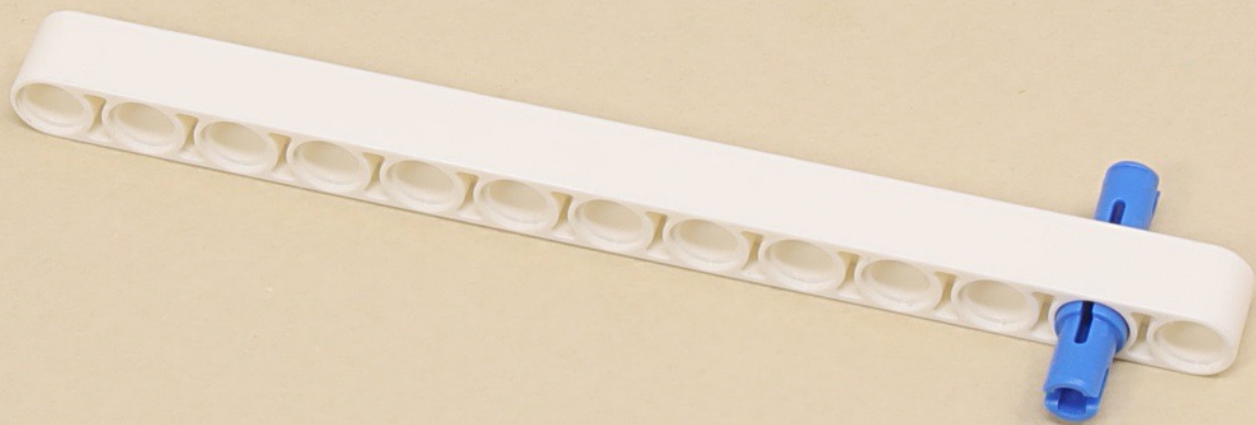


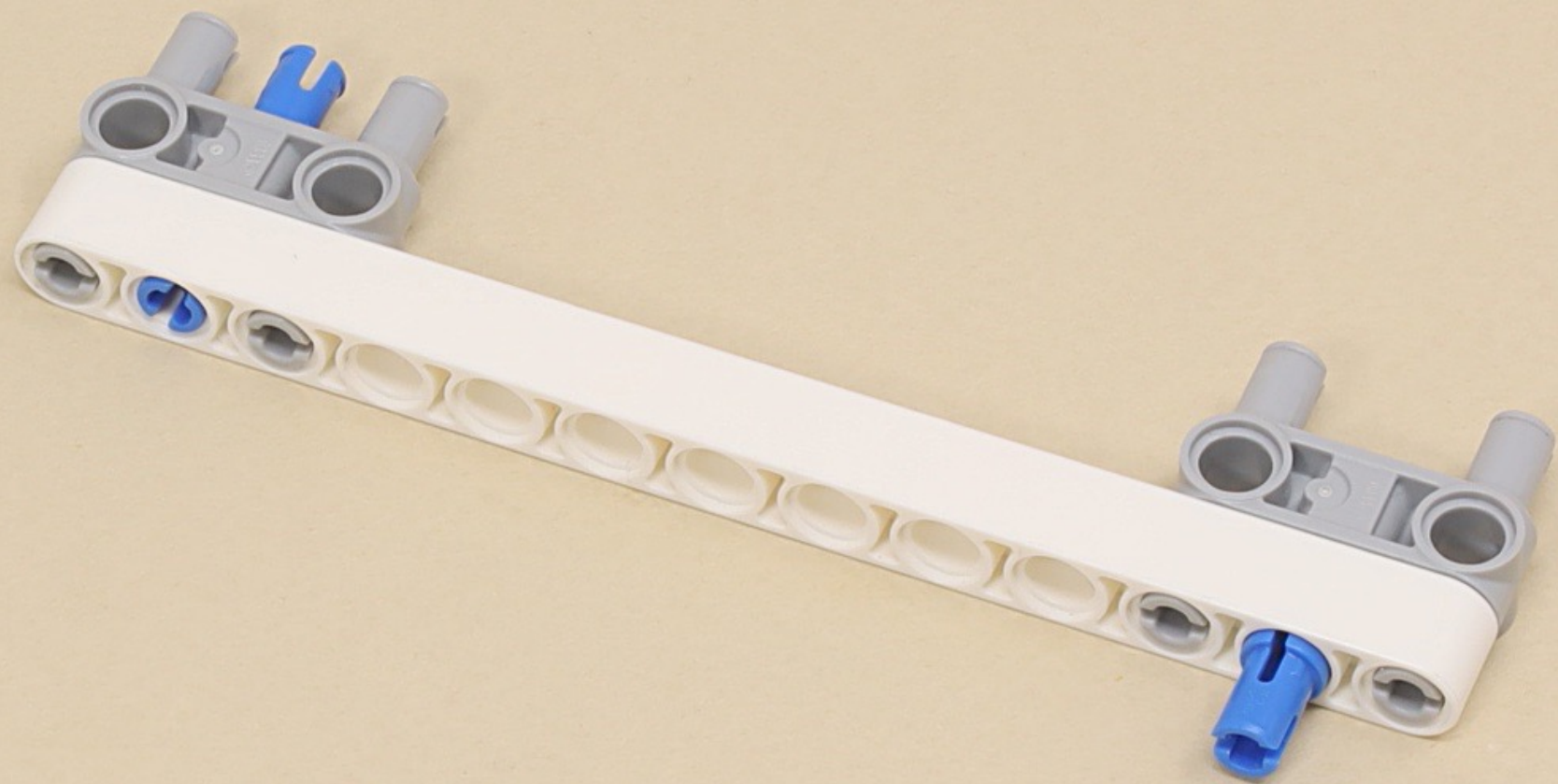
(5 x)



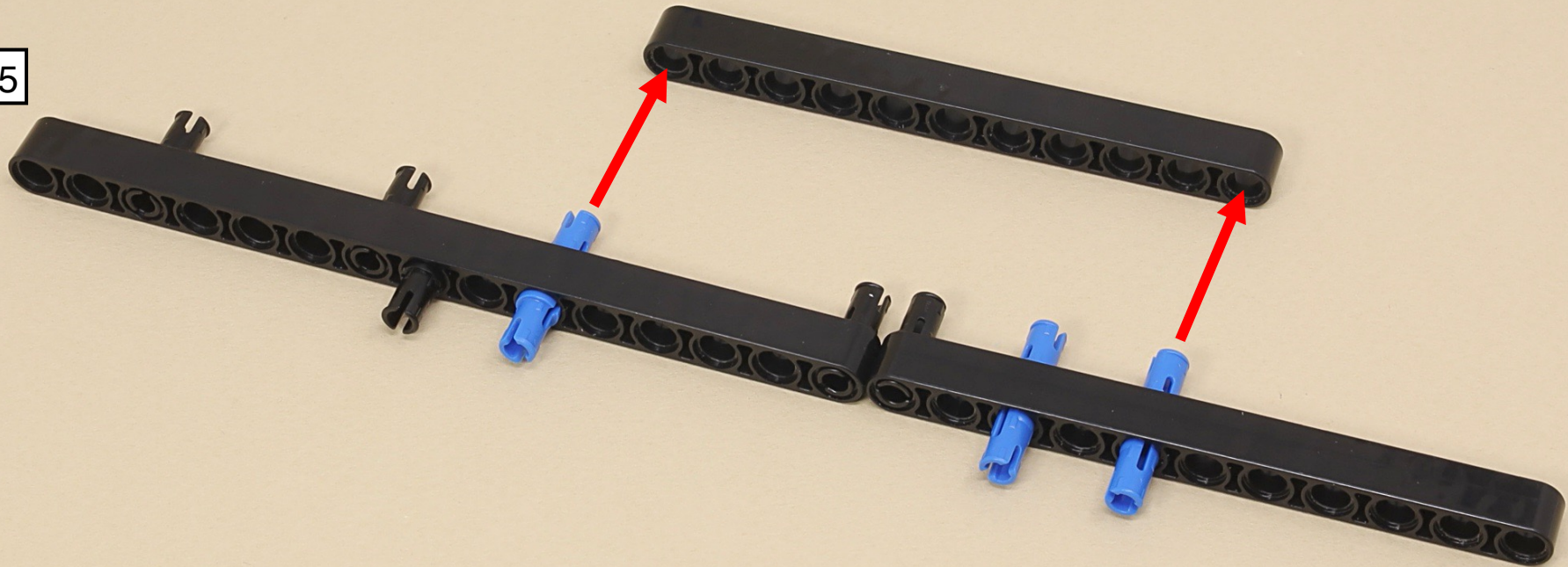
(5 x)

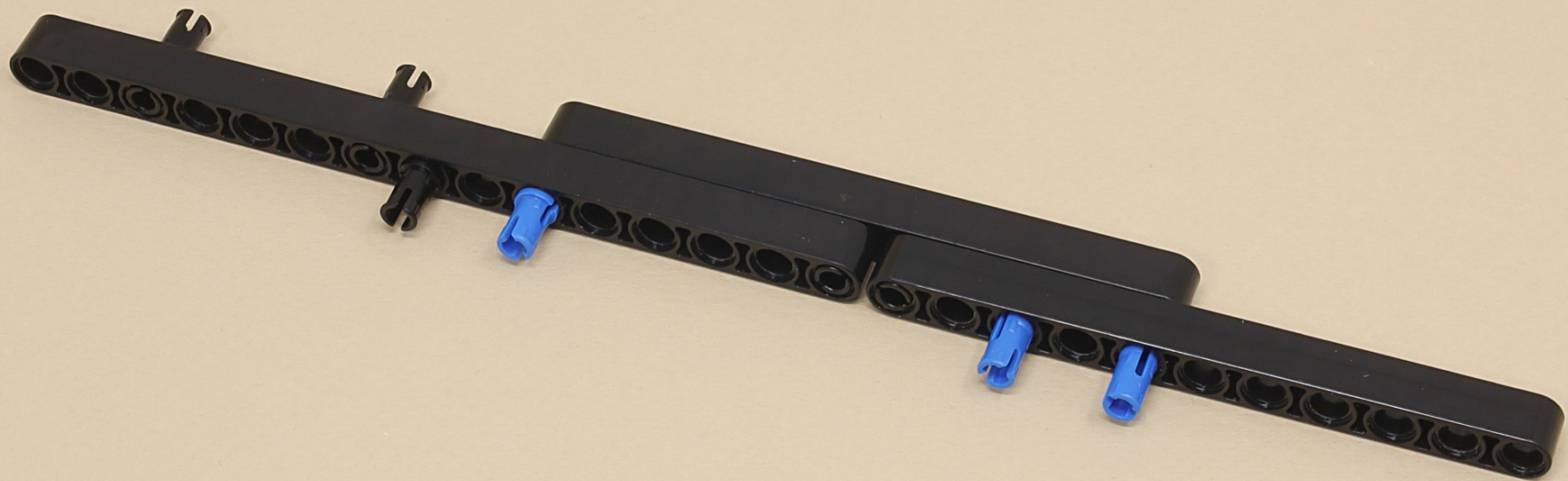


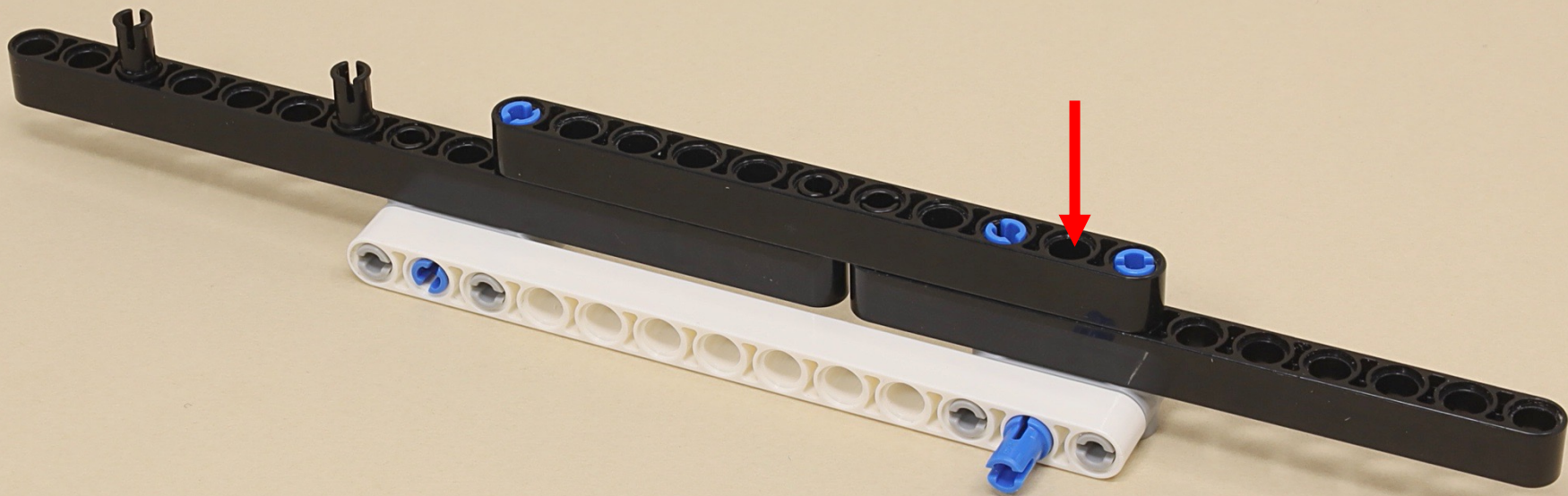




15

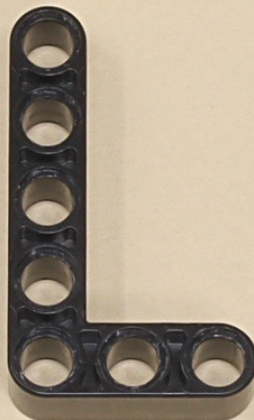








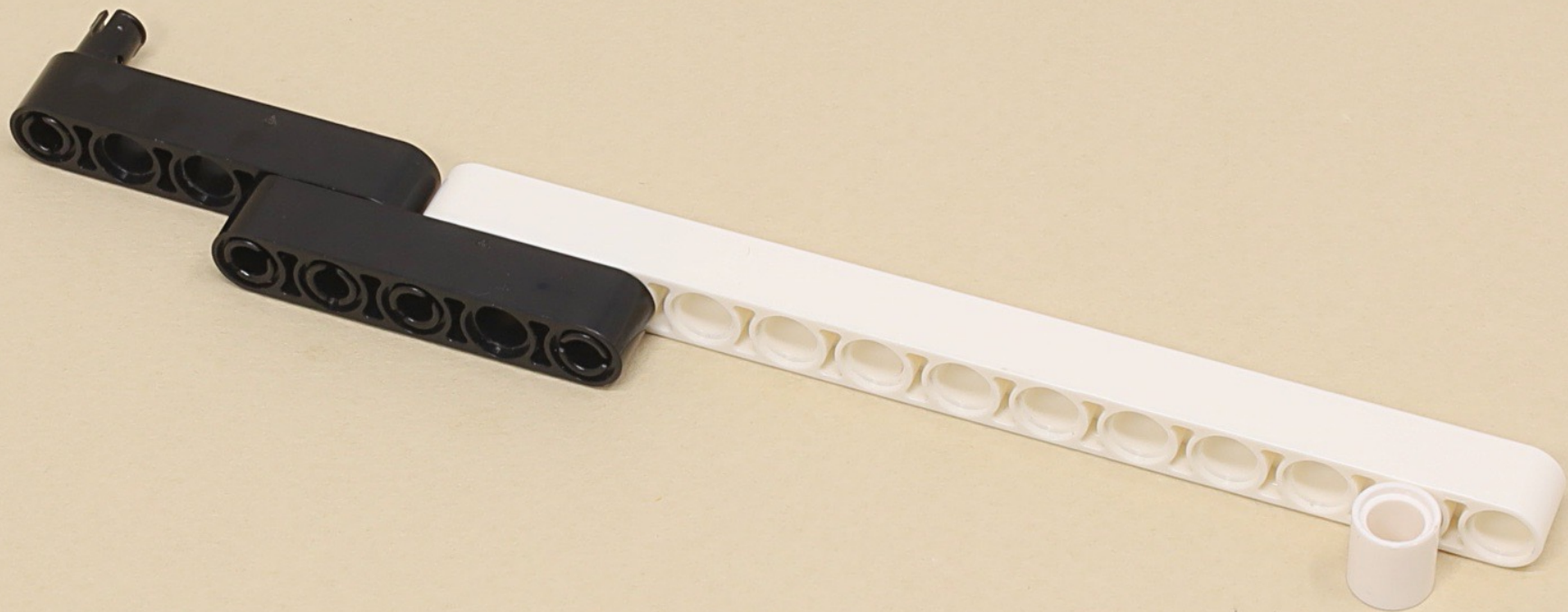
13

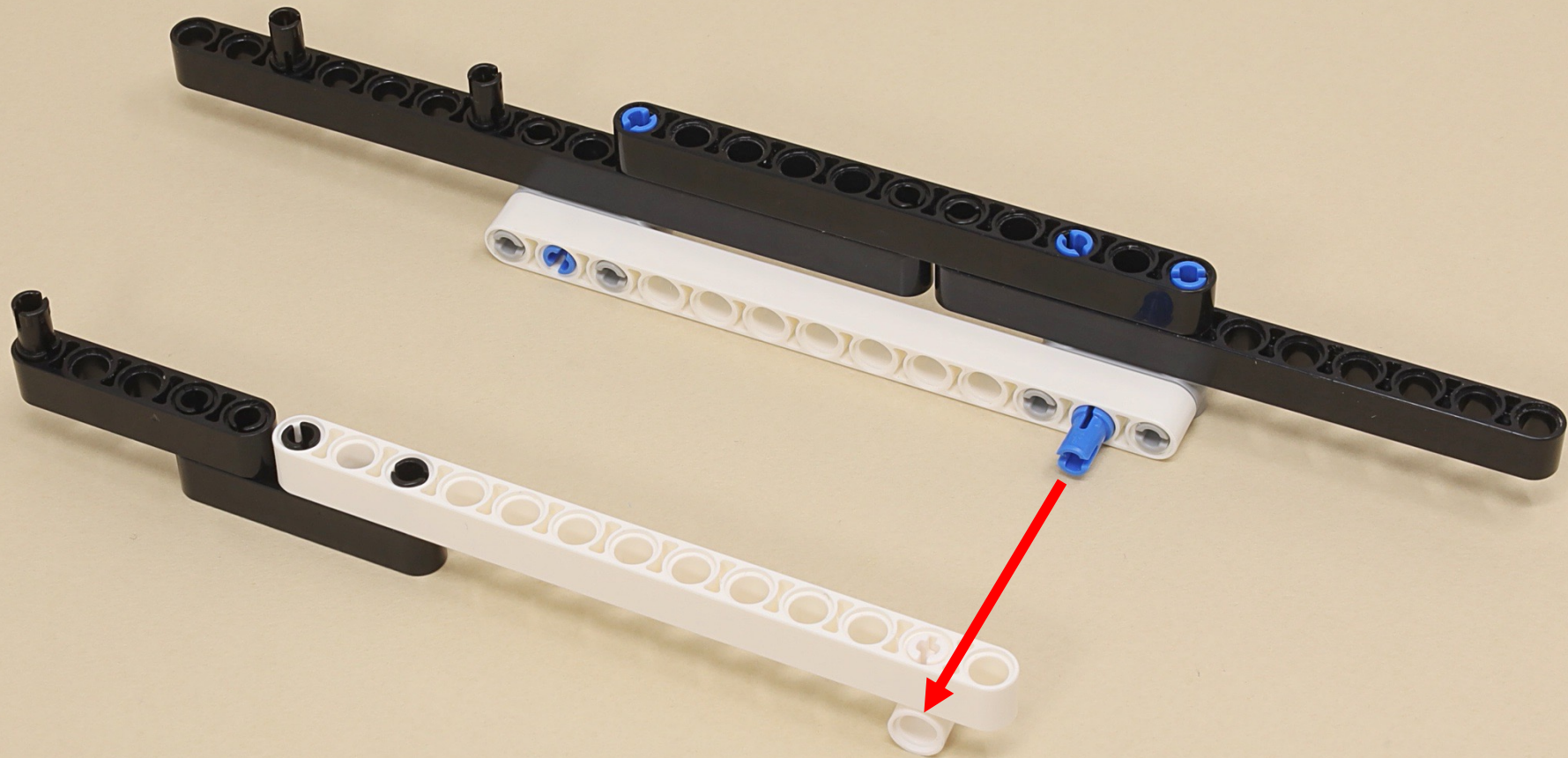


(5 x)

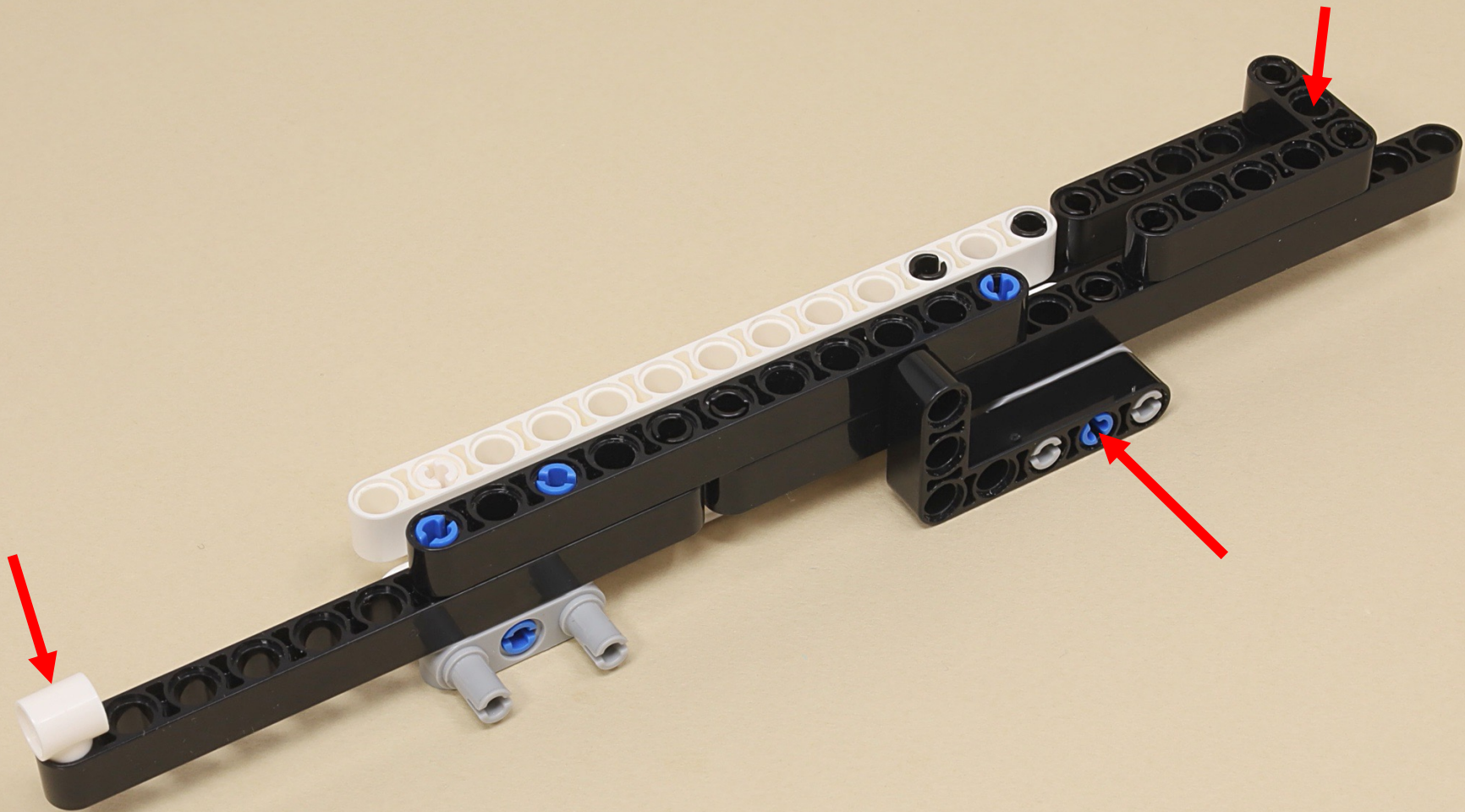














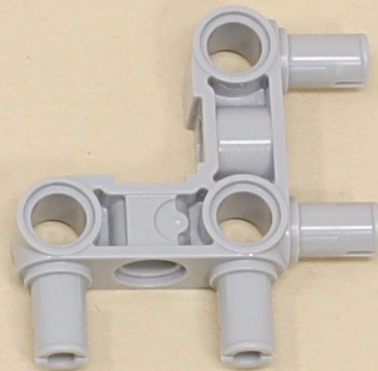
9

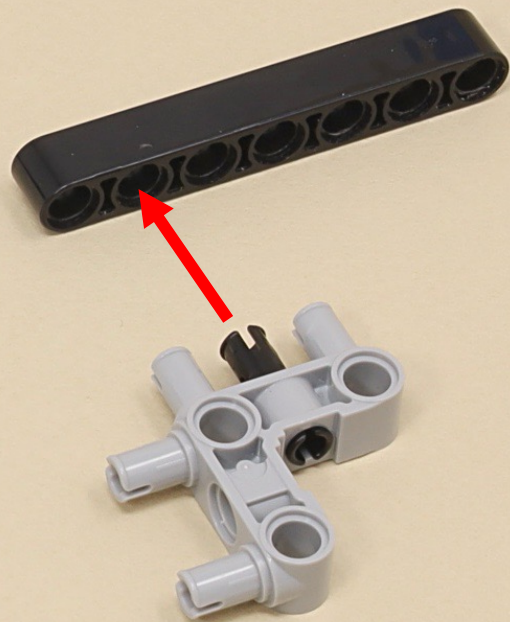
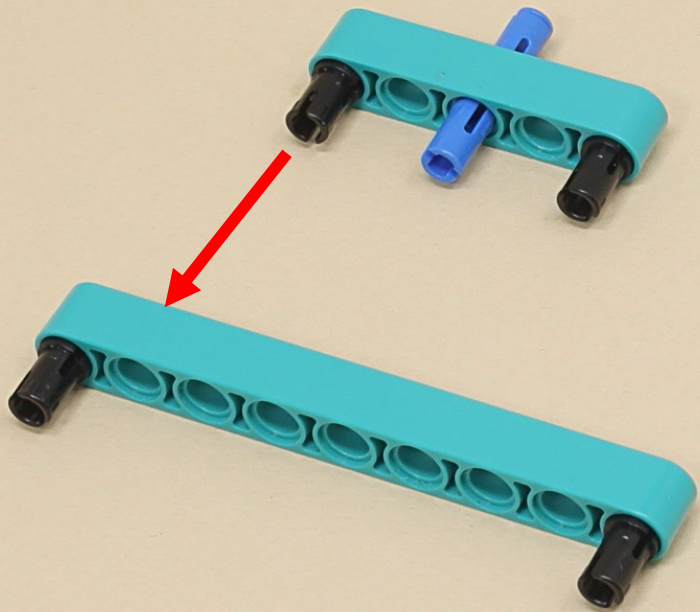


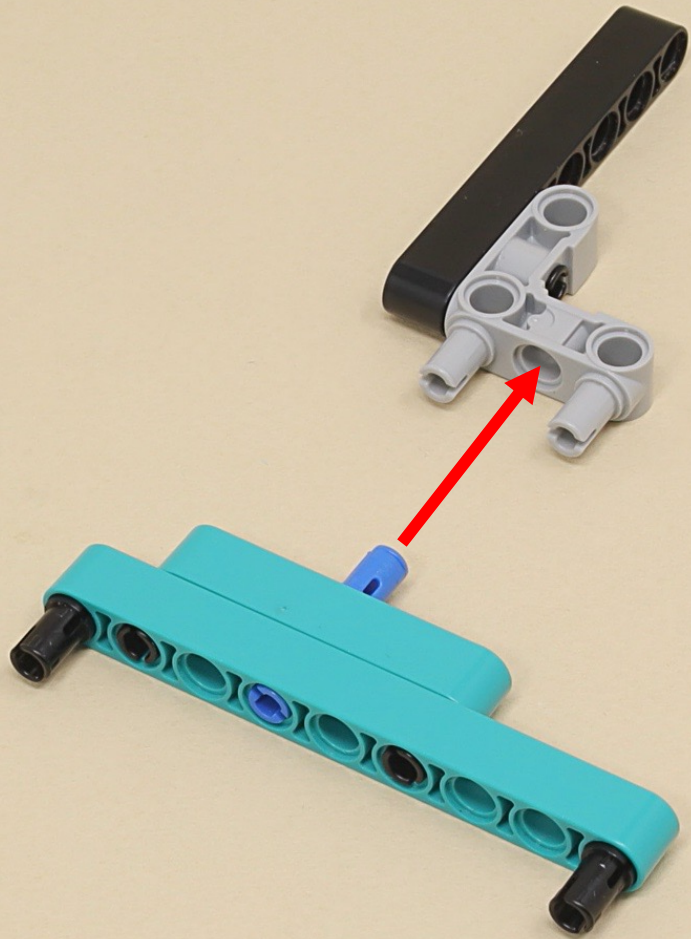
7

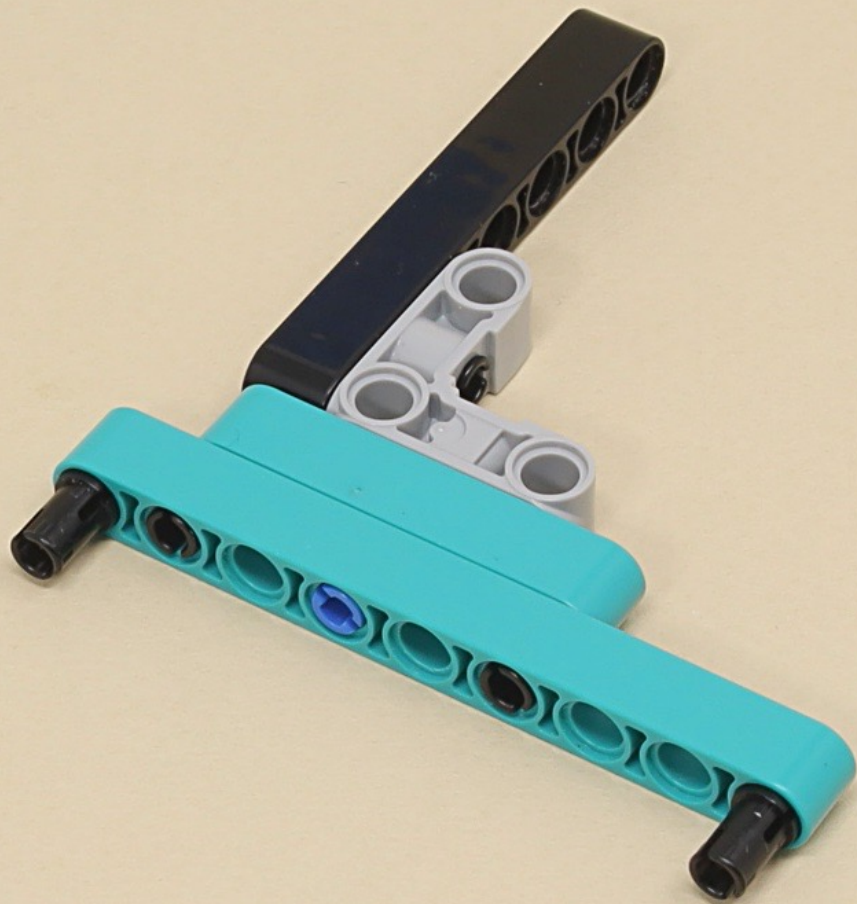


(5 x)











11



5



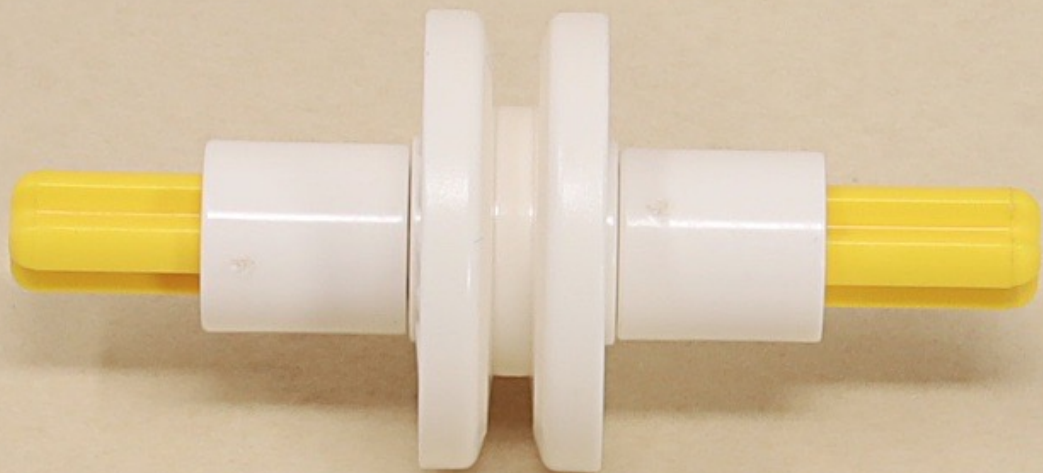
3



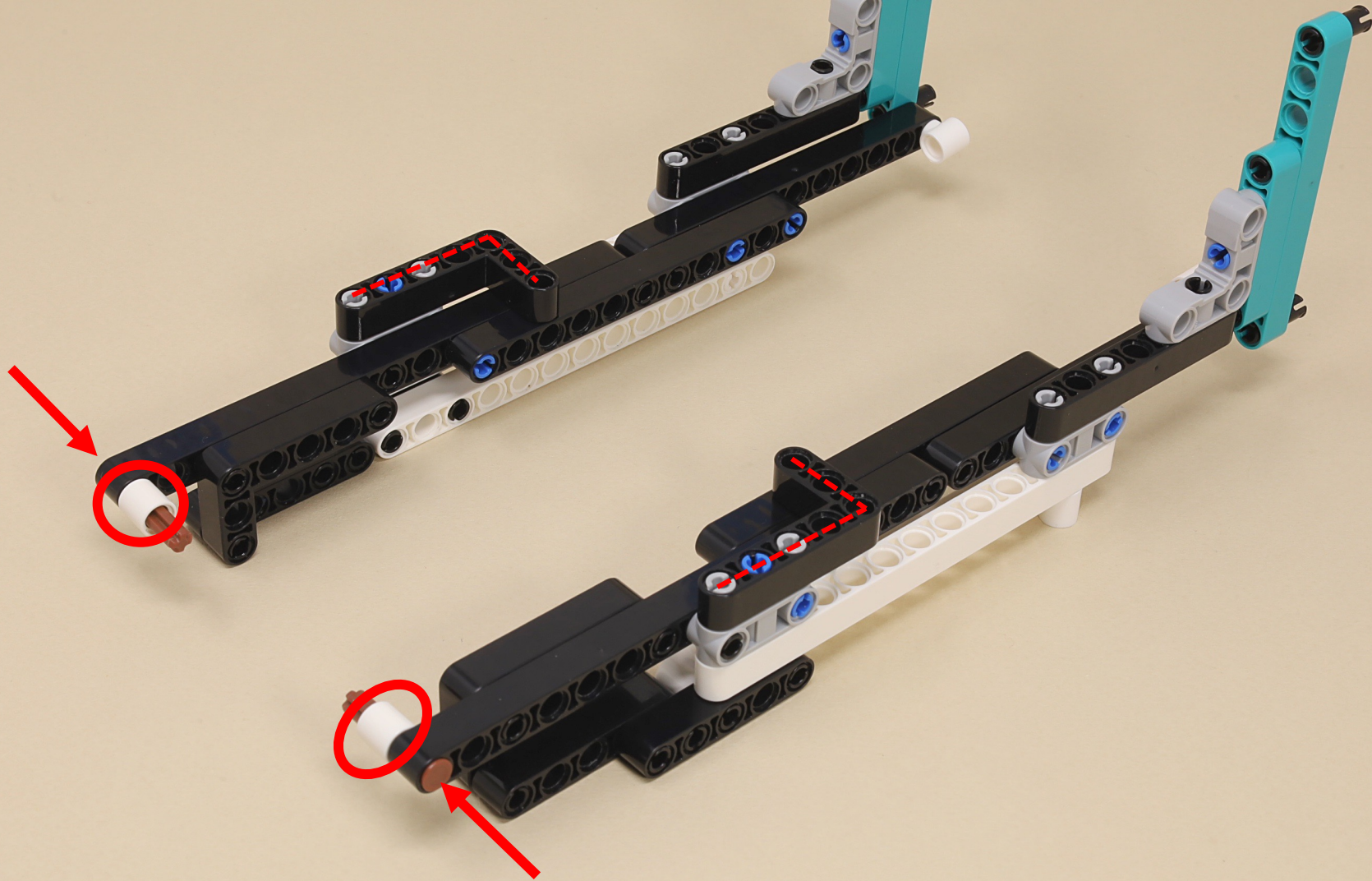
3

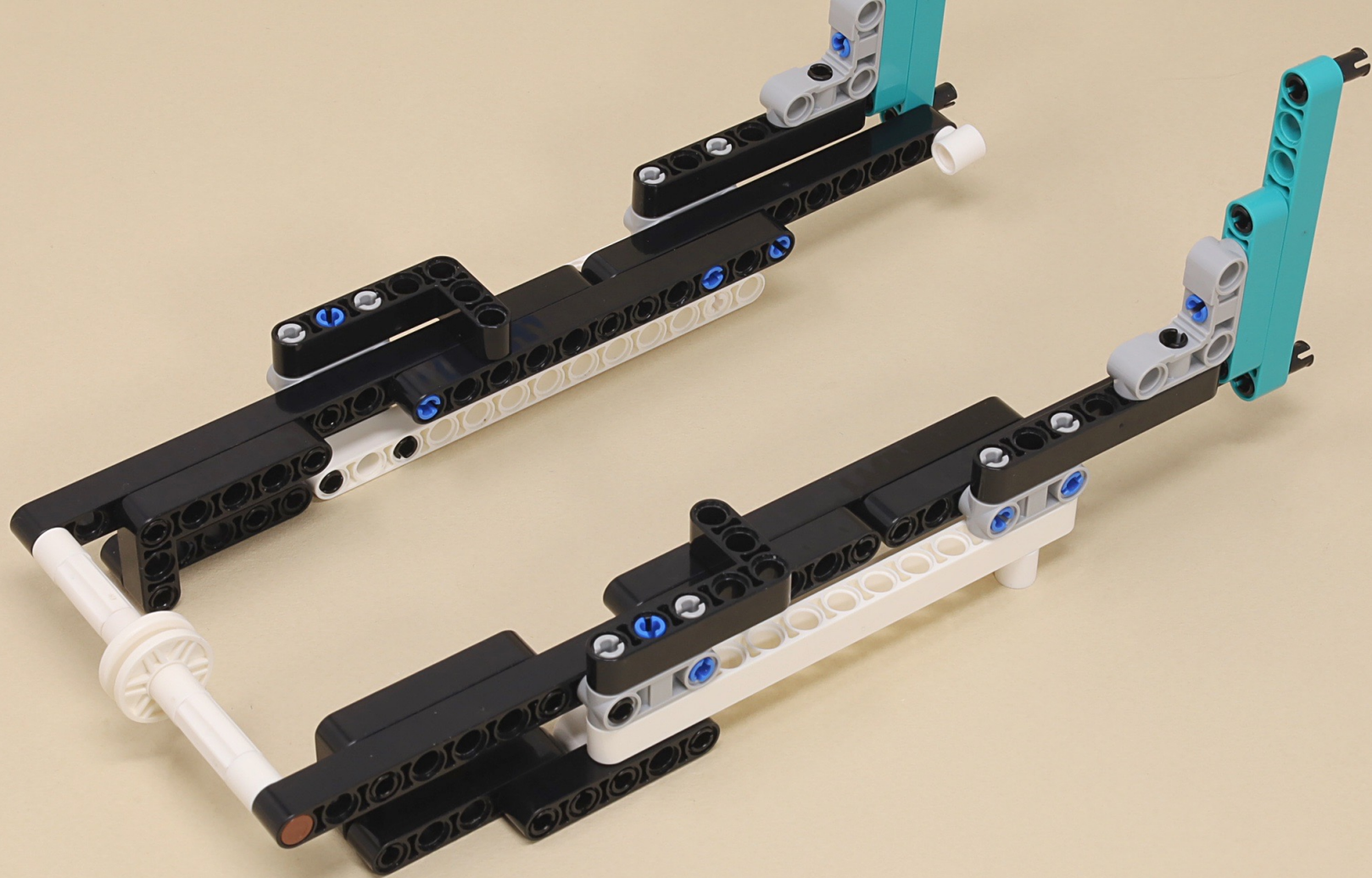


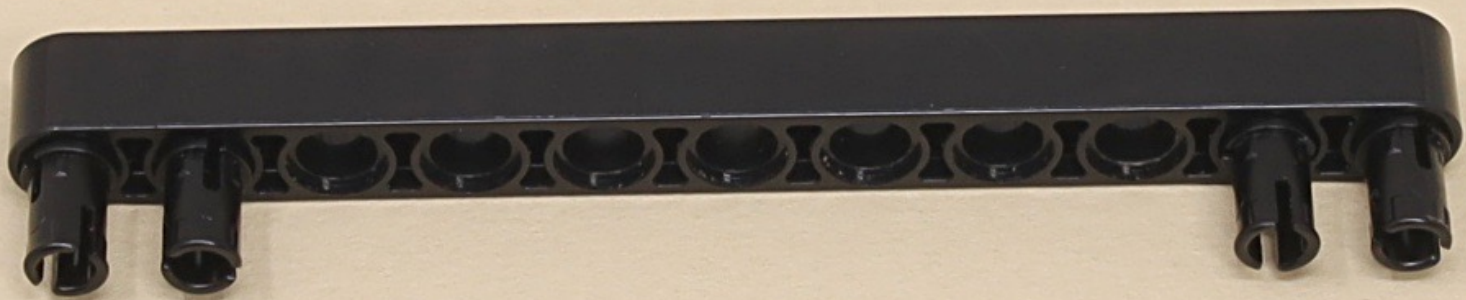


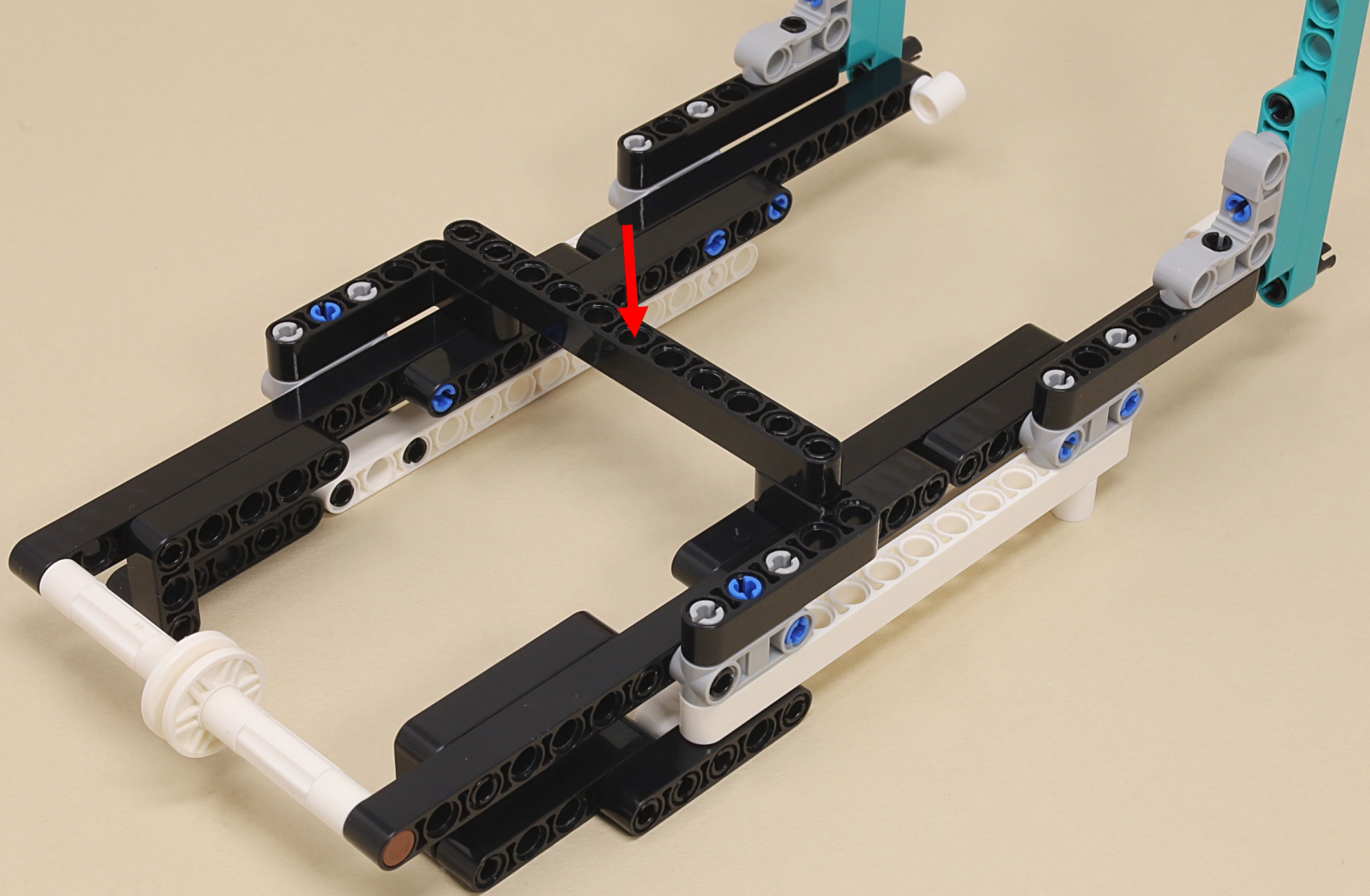


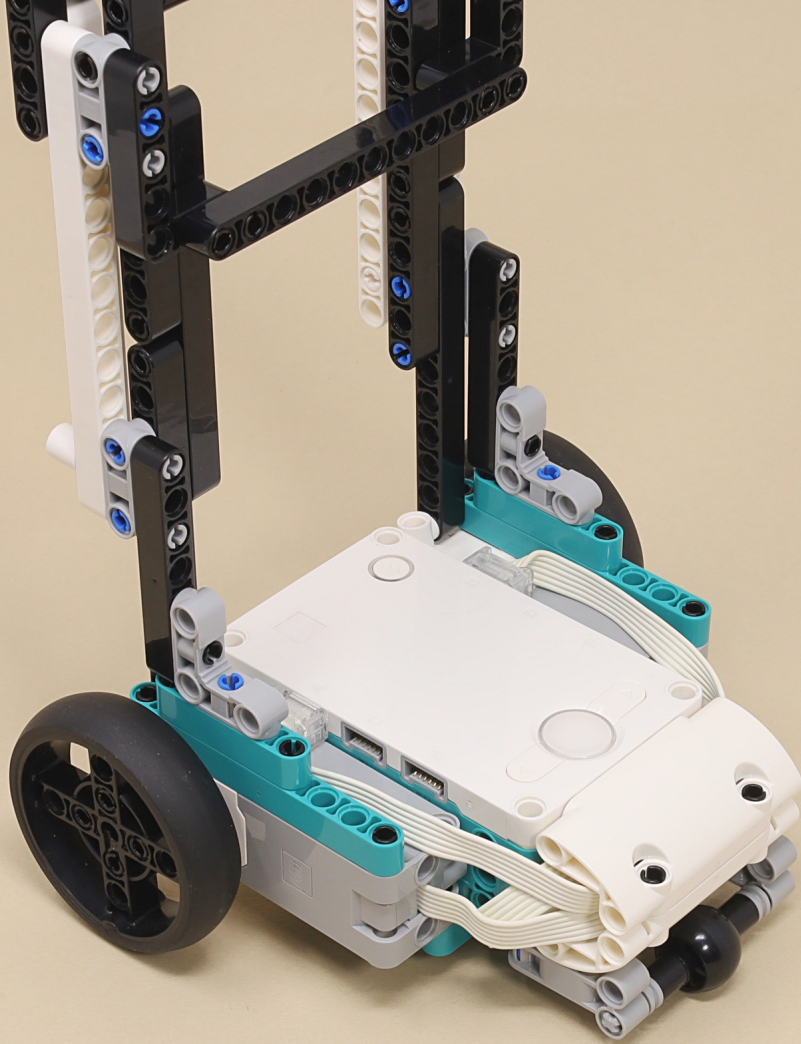


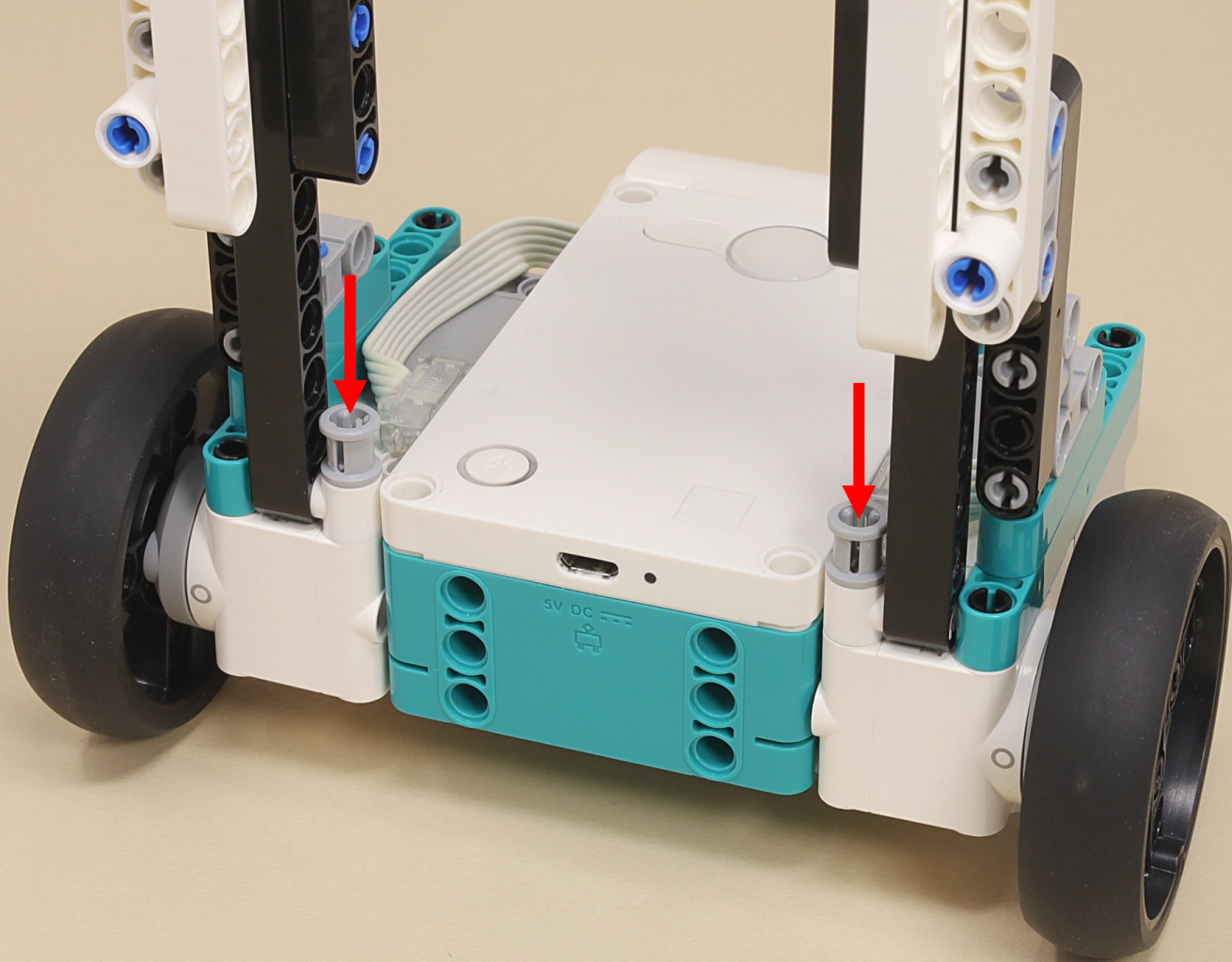










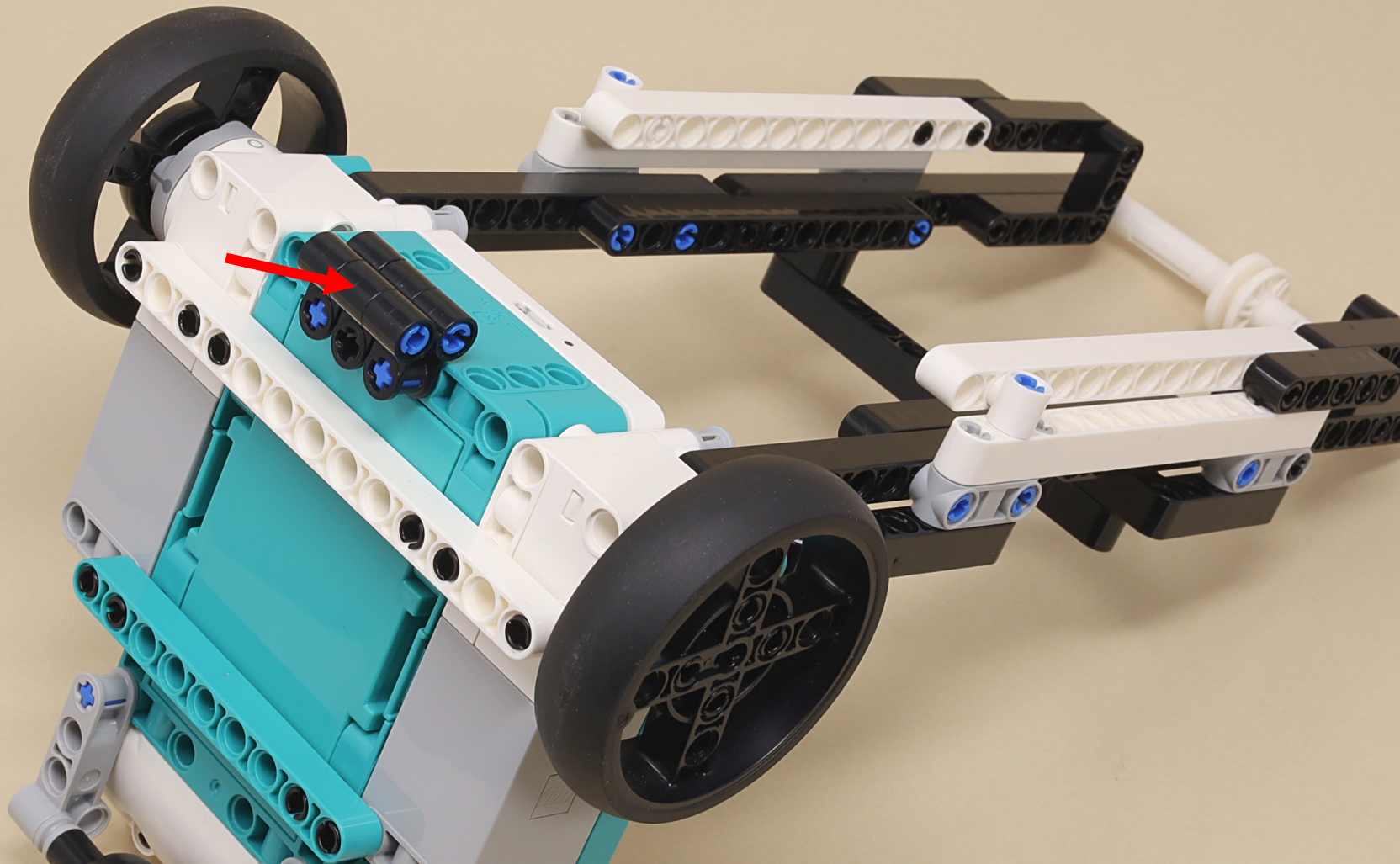














11

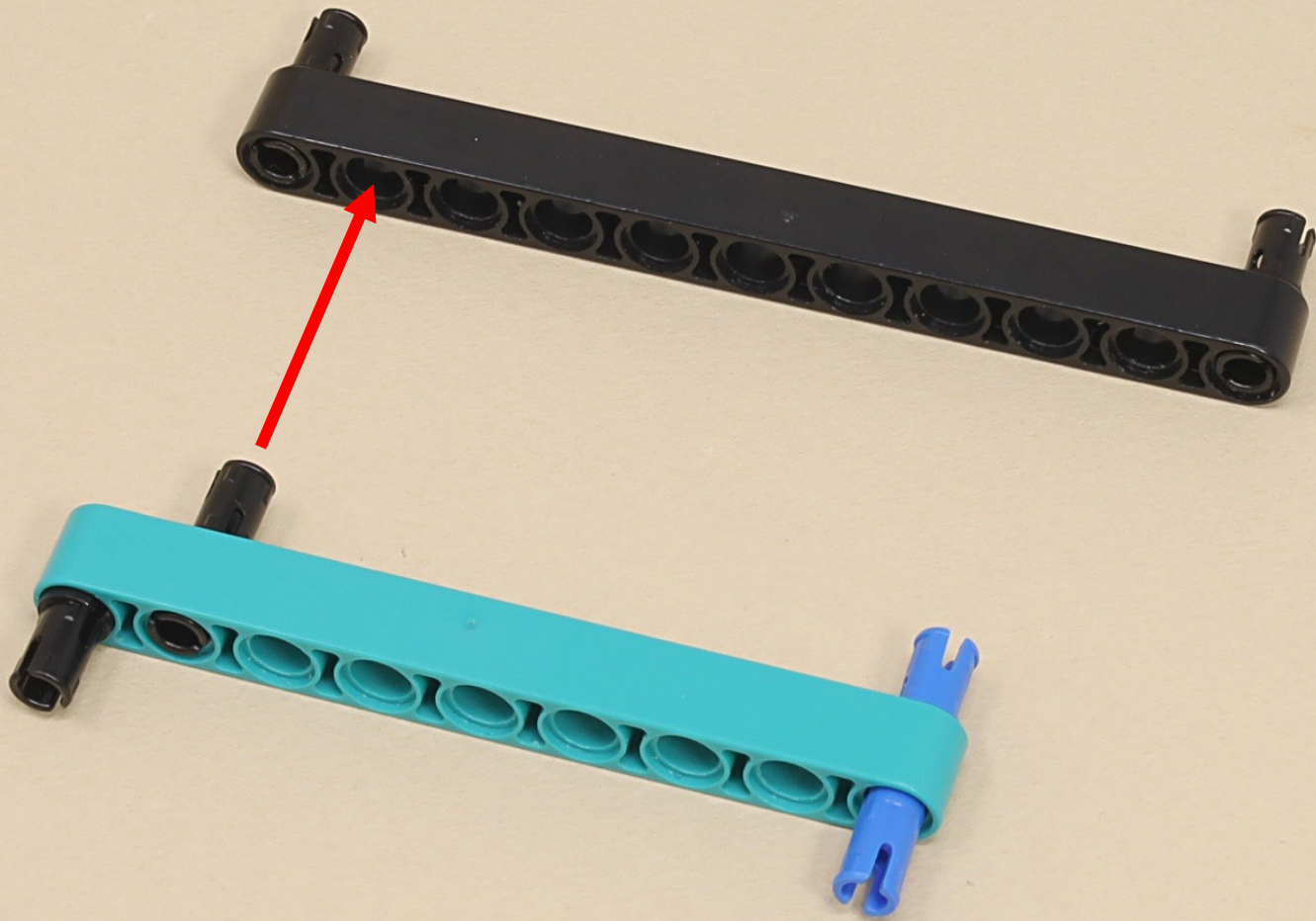


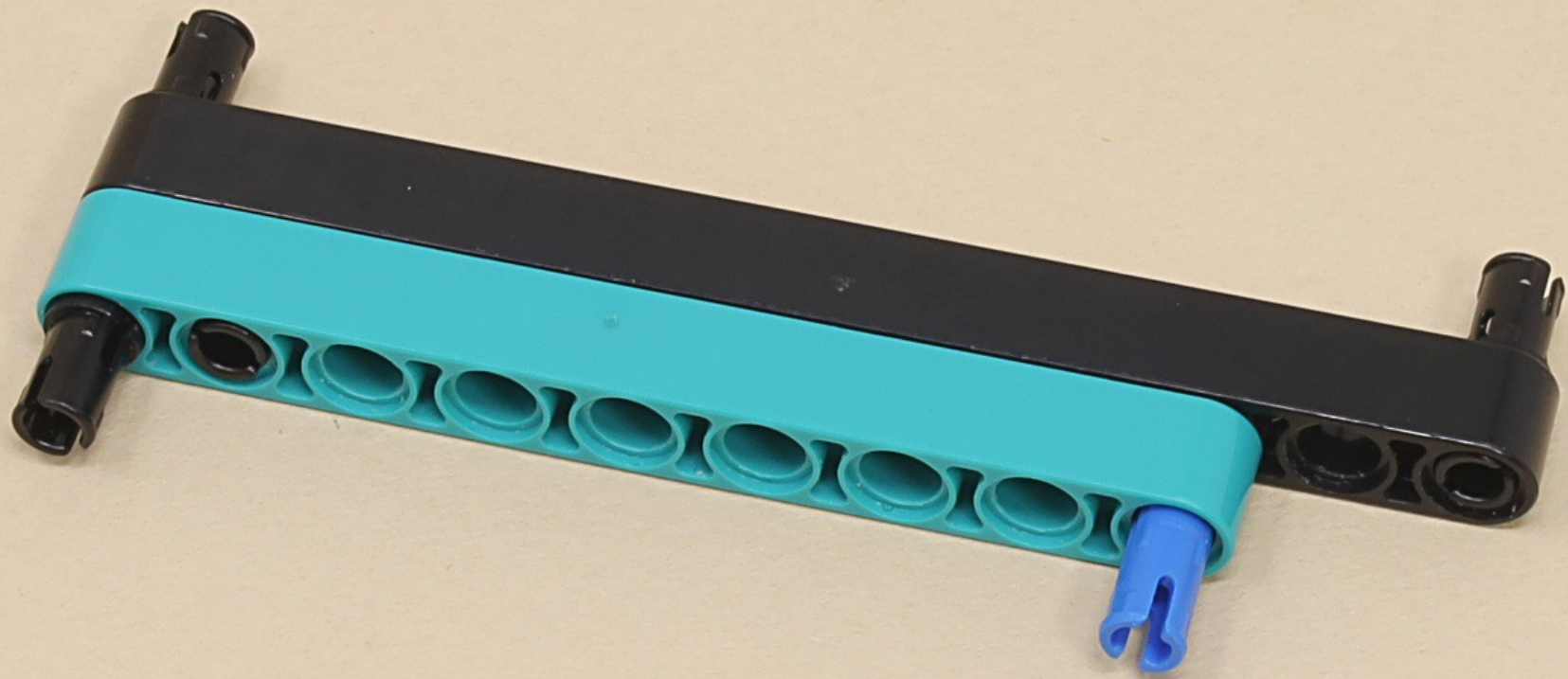
9

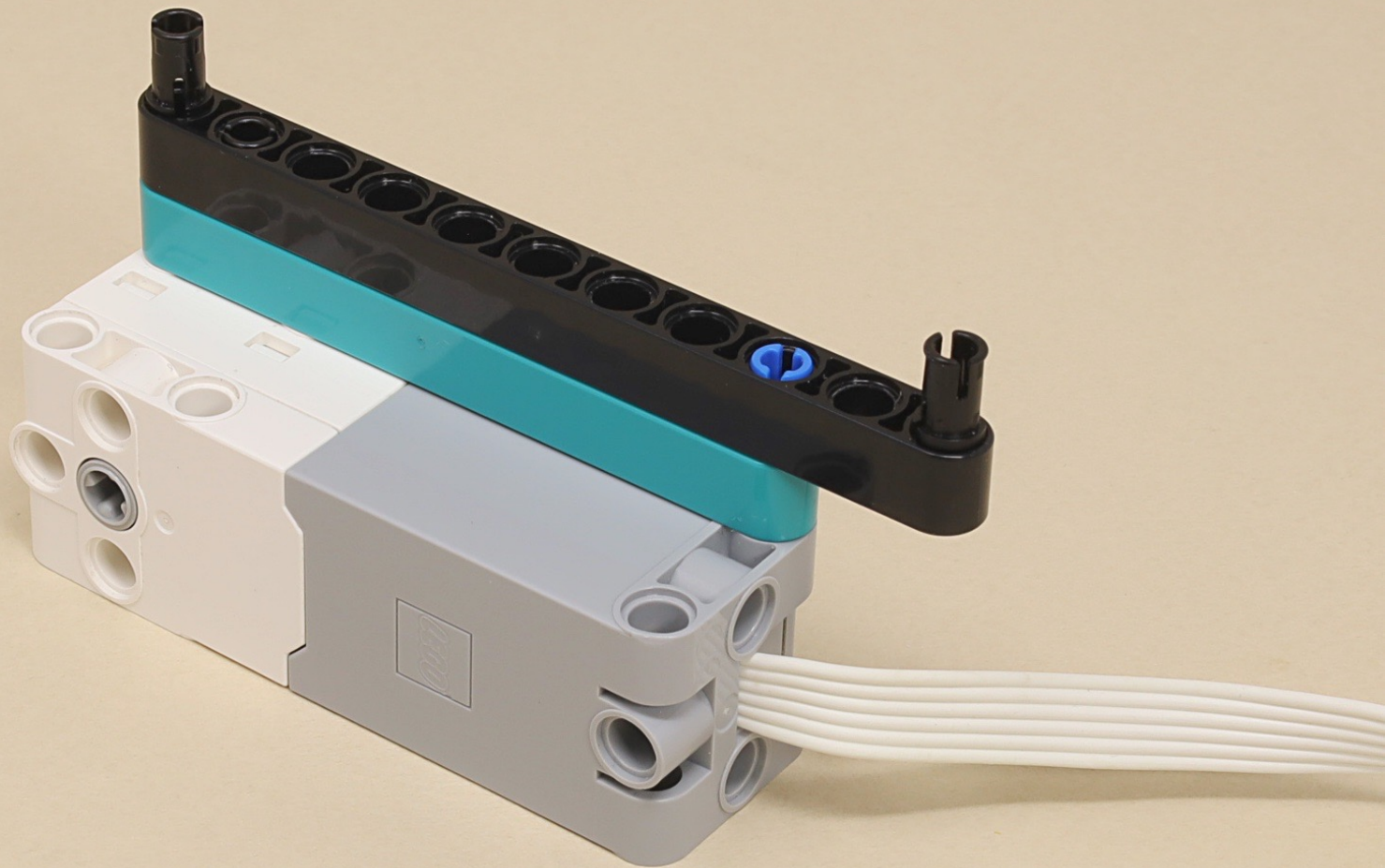


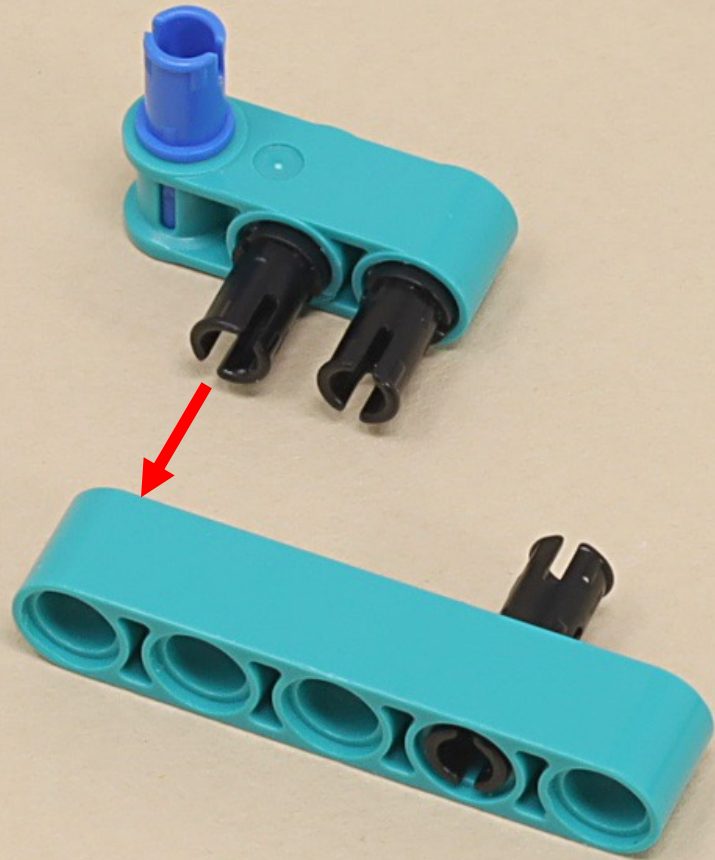
(7 x)

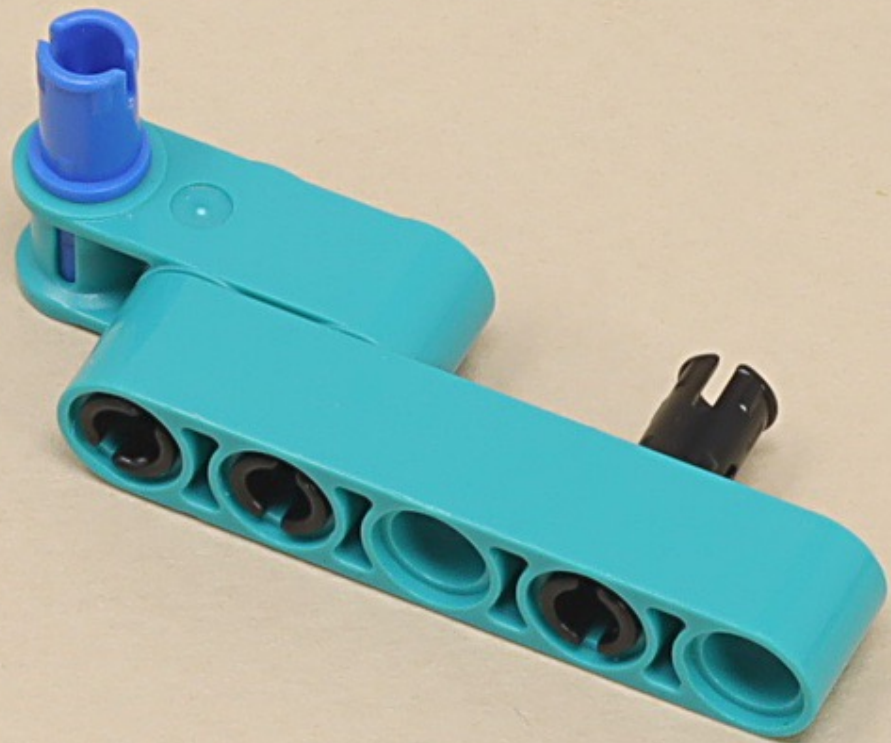


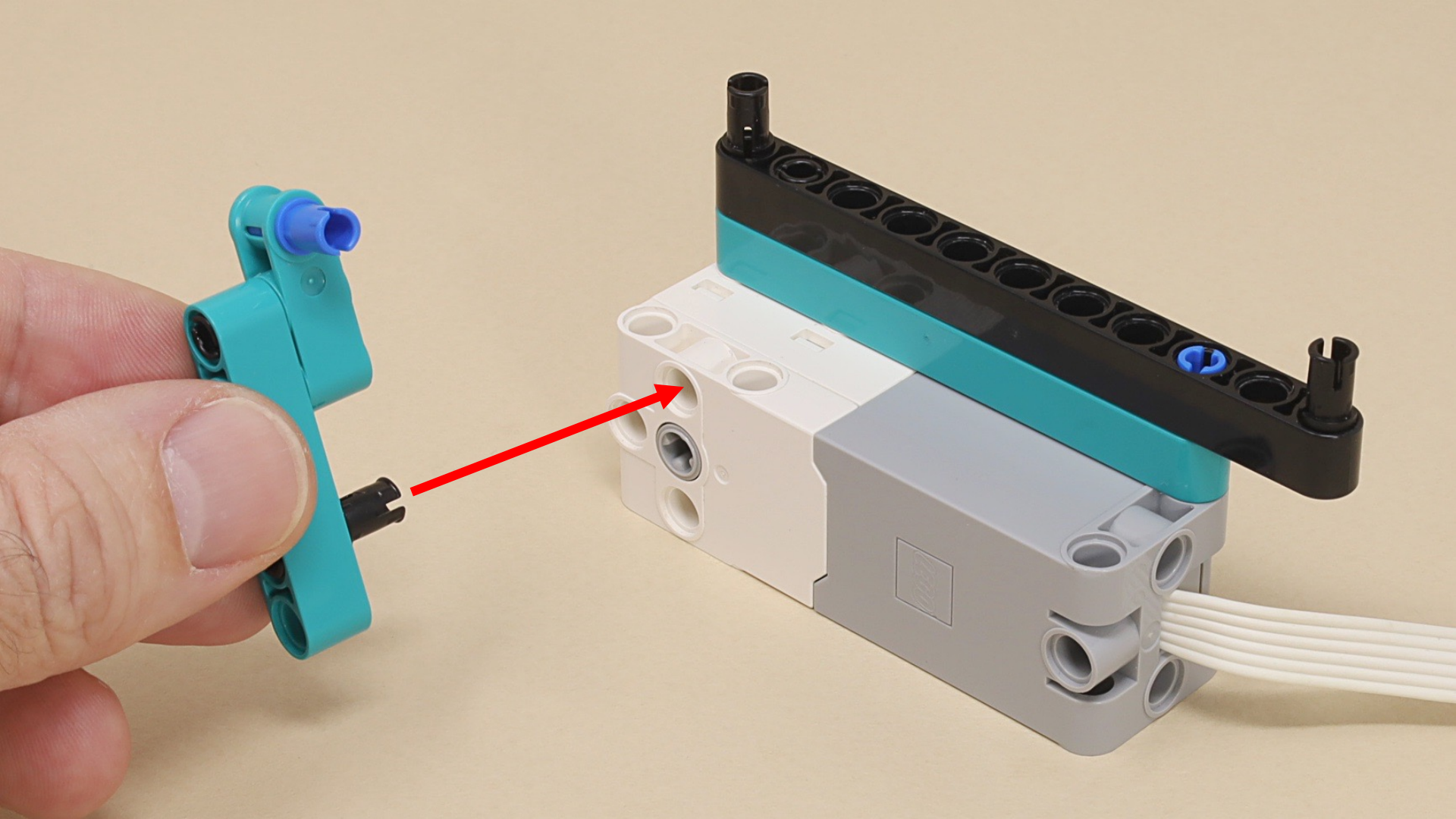


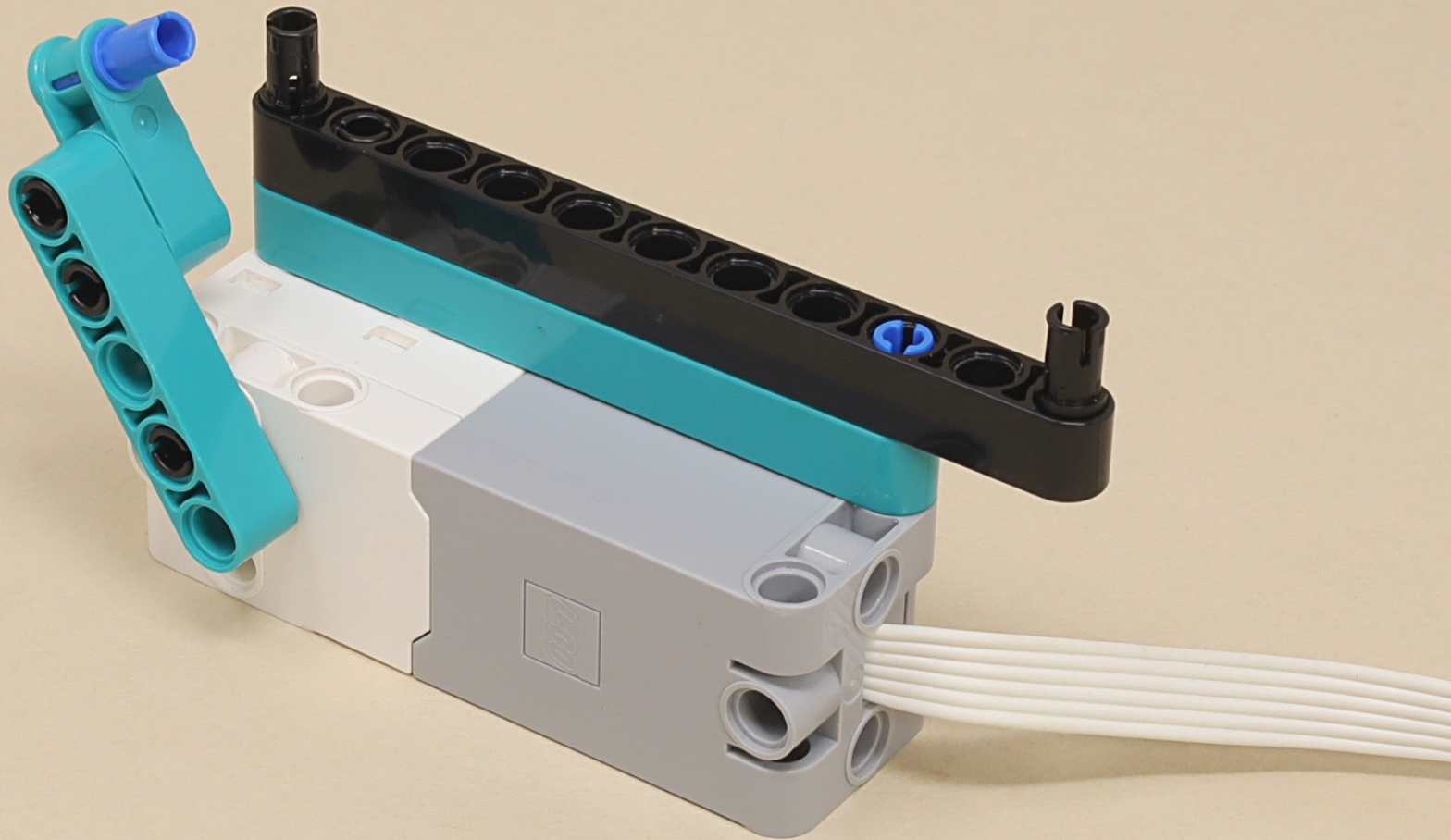


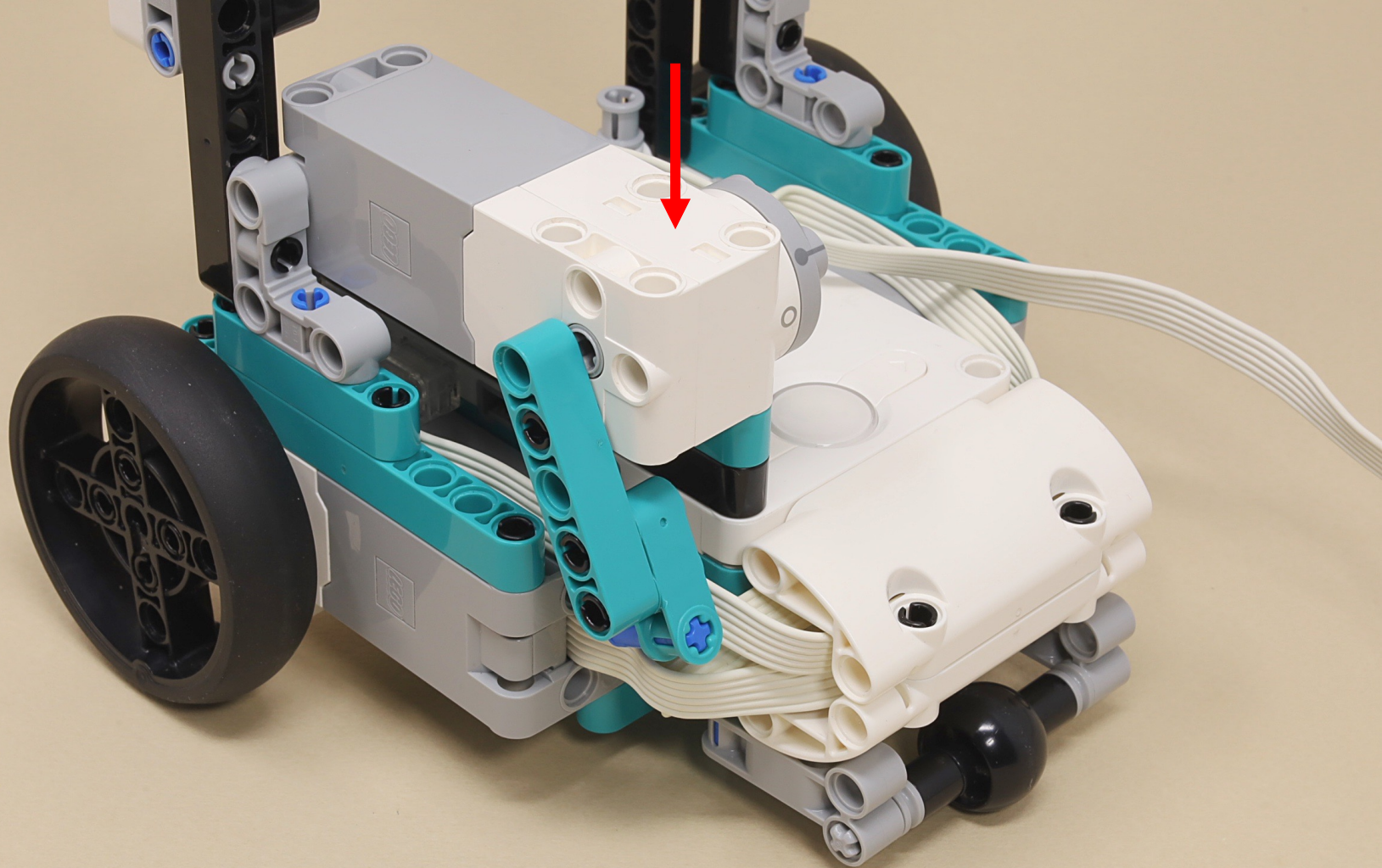


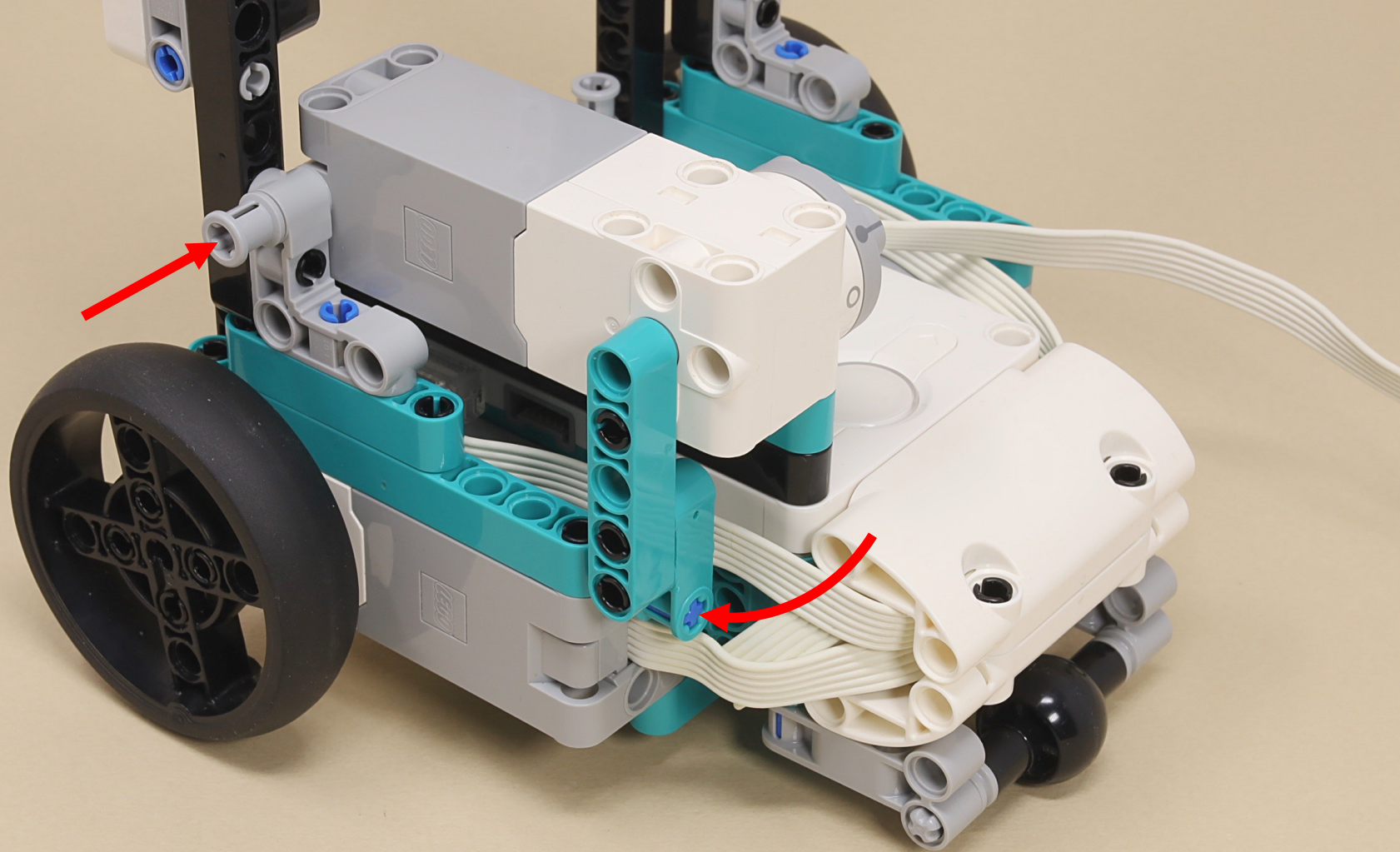


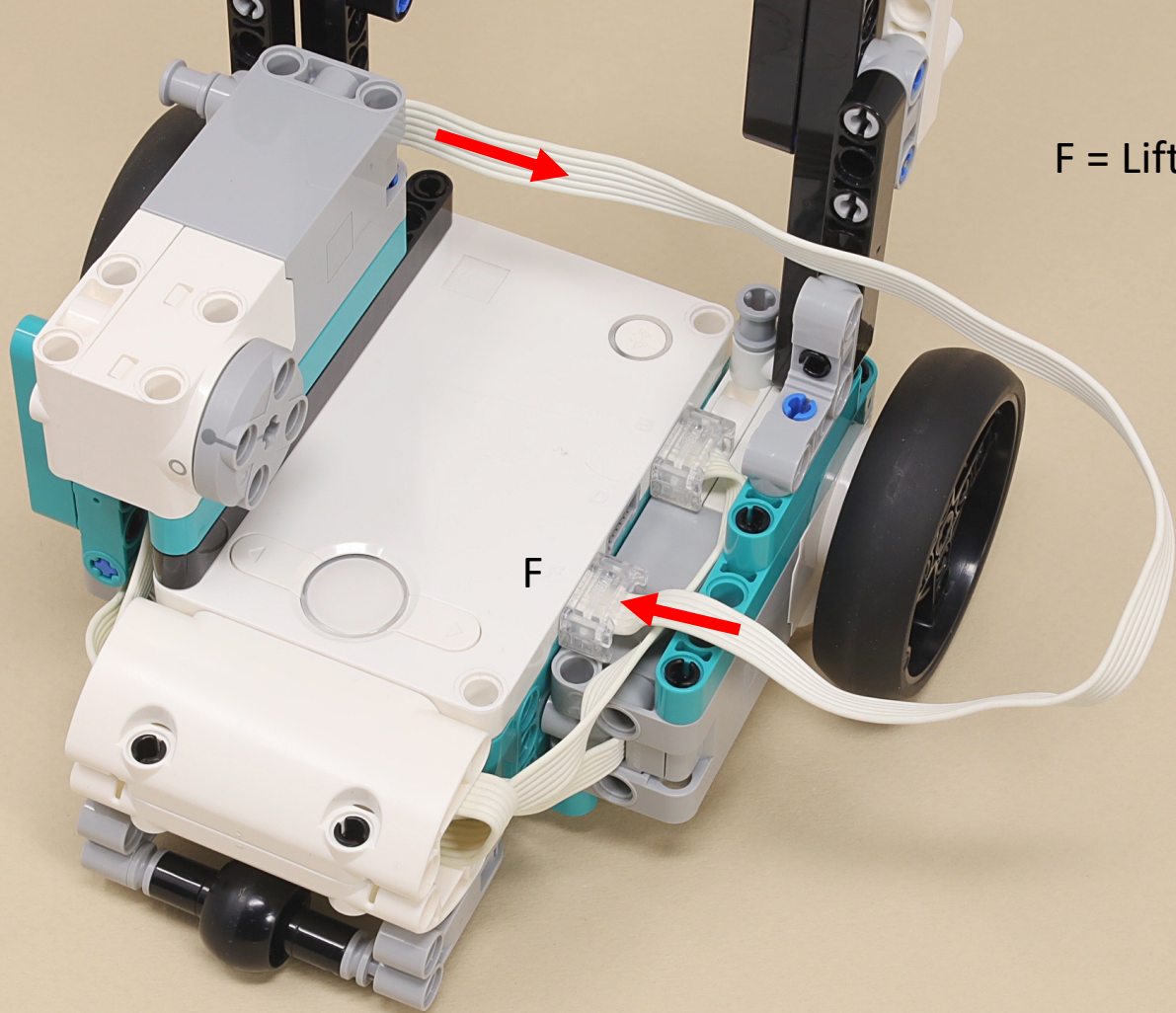








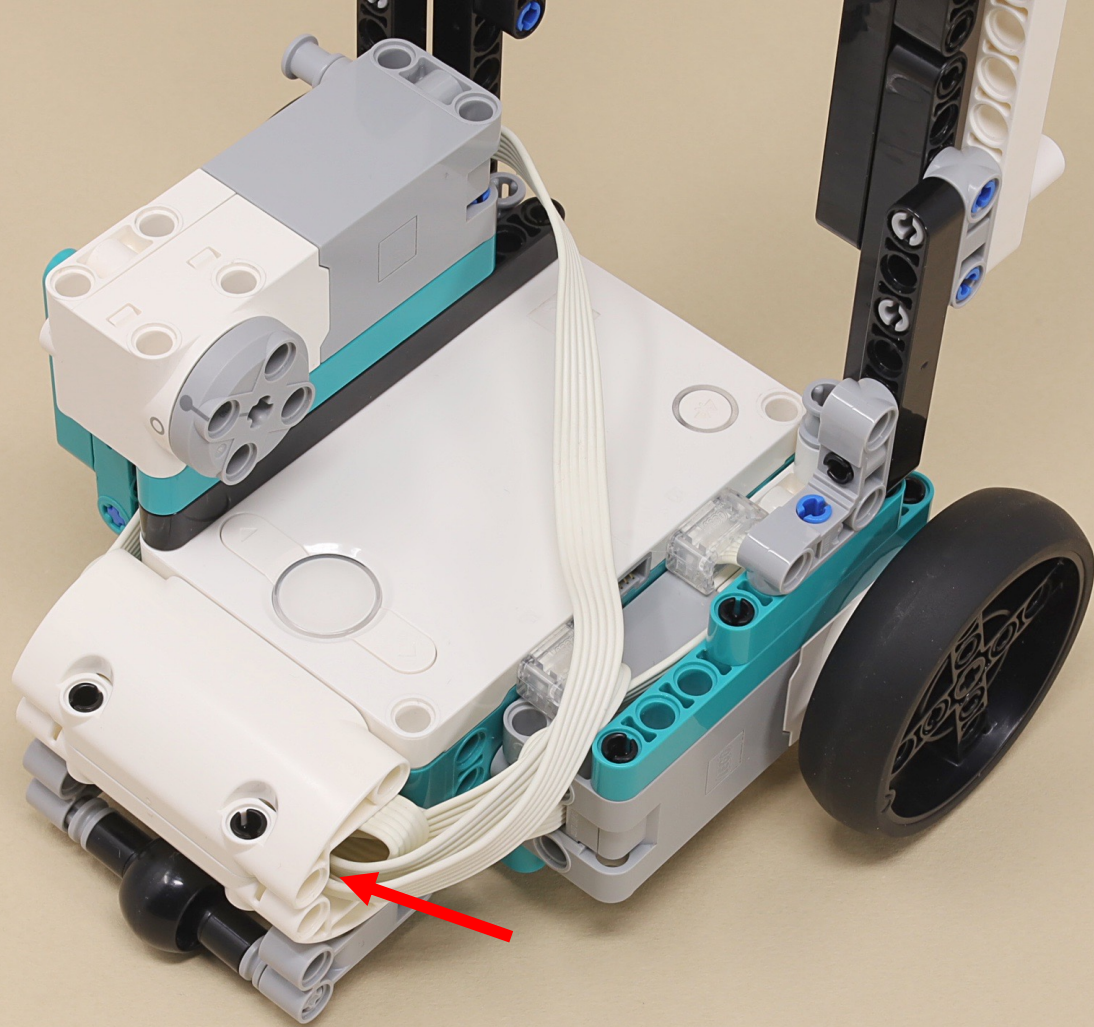




F = Lift Motor

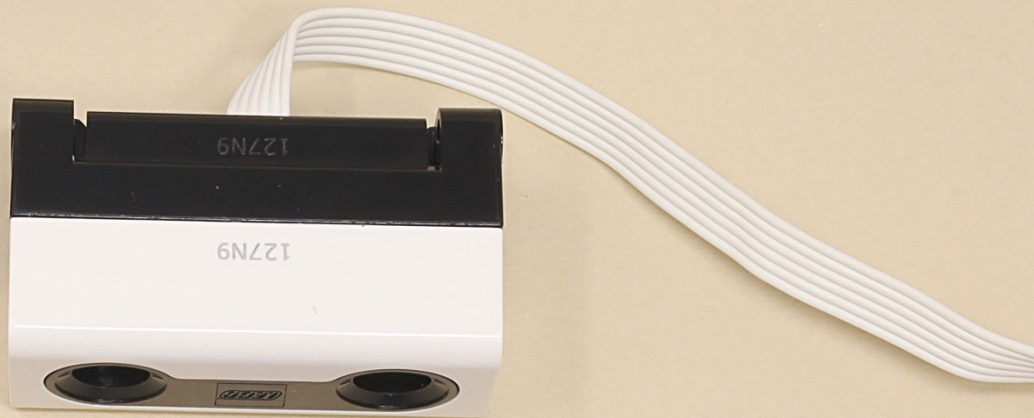
F

F

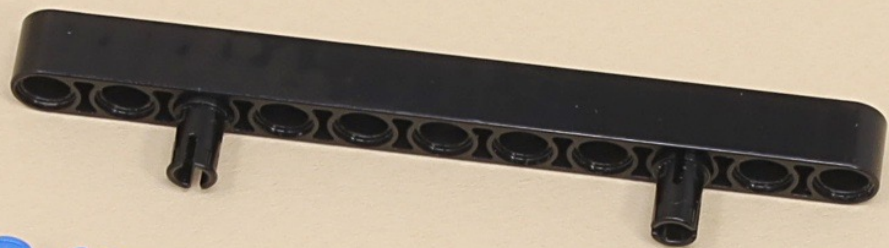




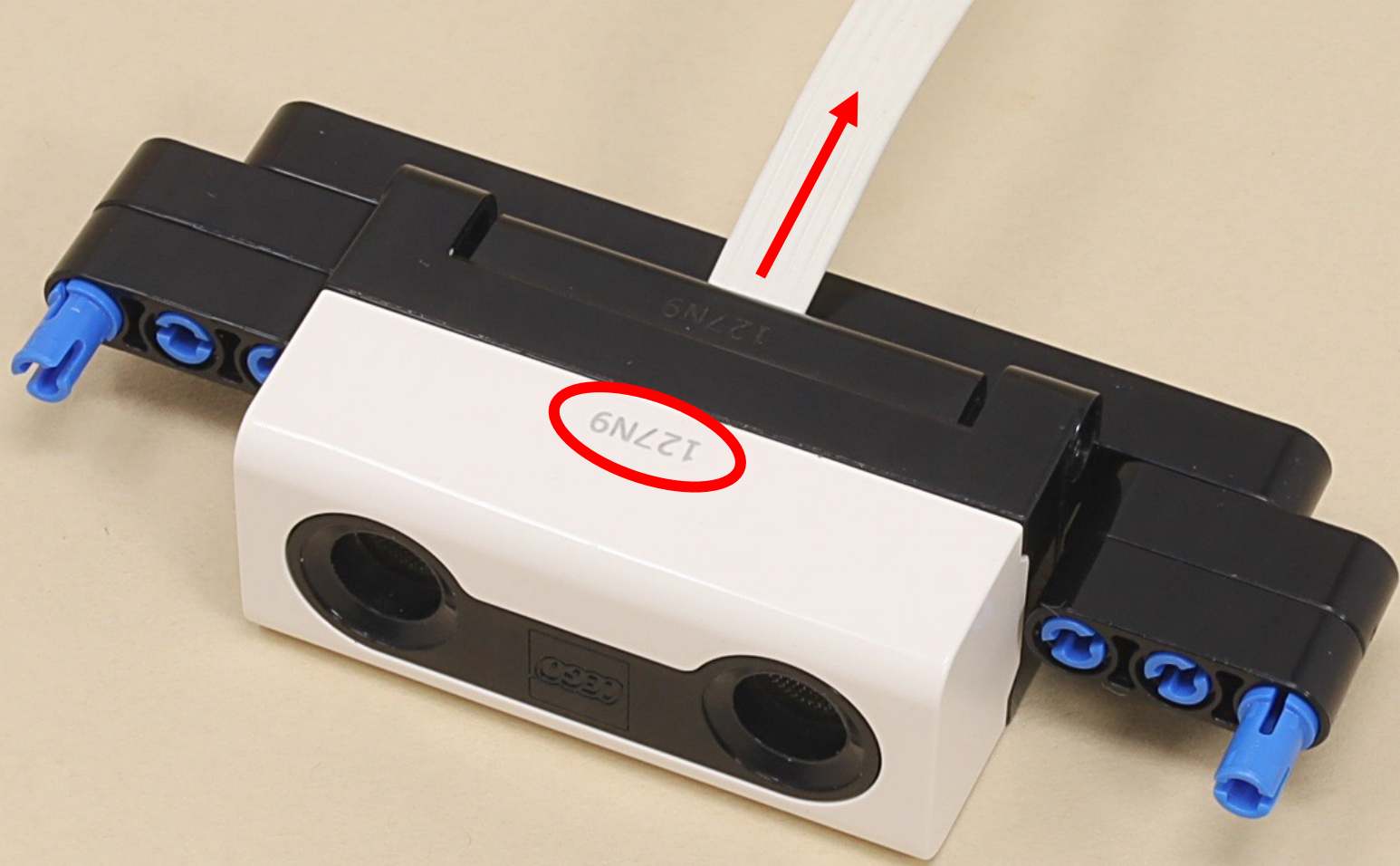
11



(6 x)

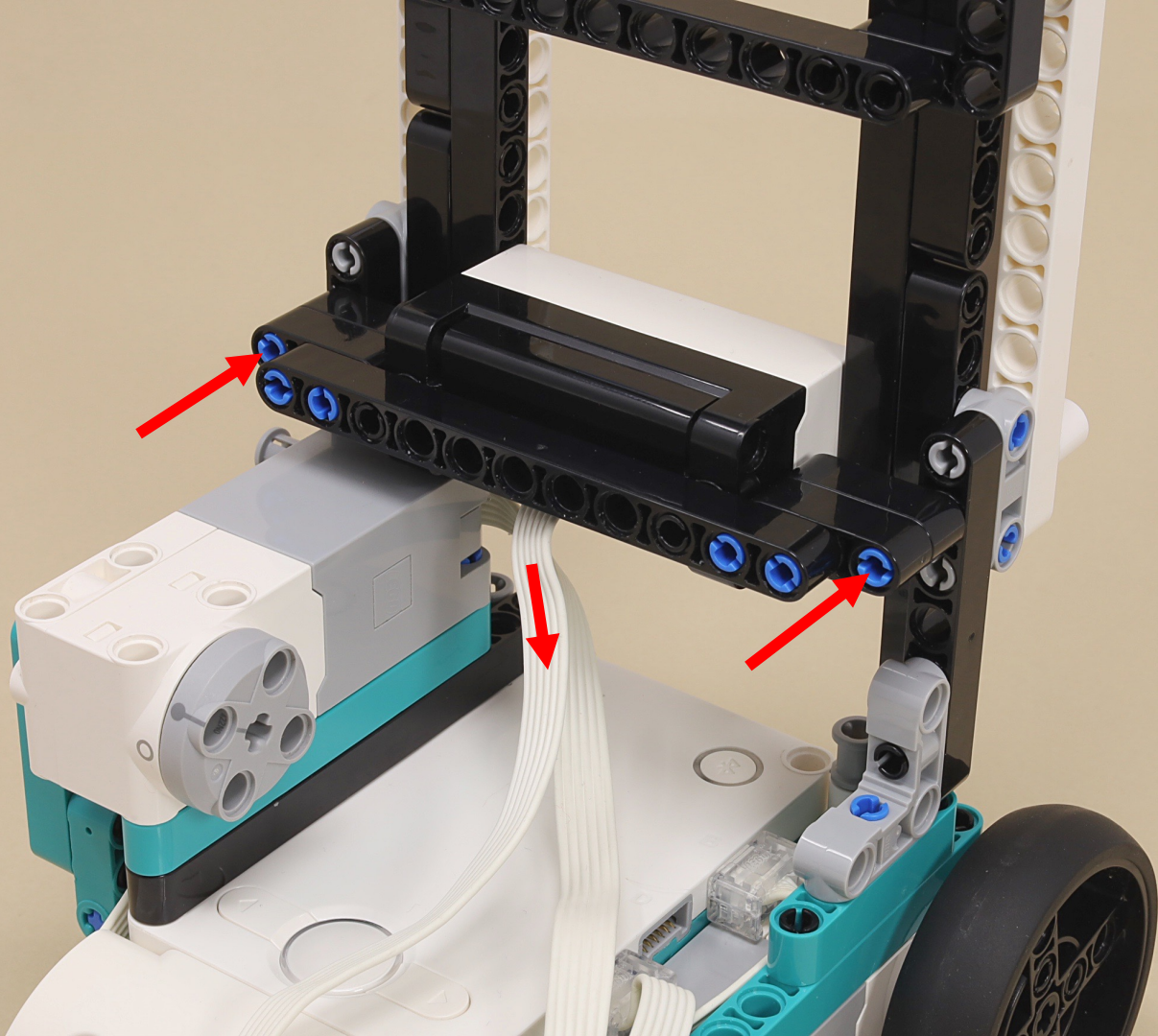


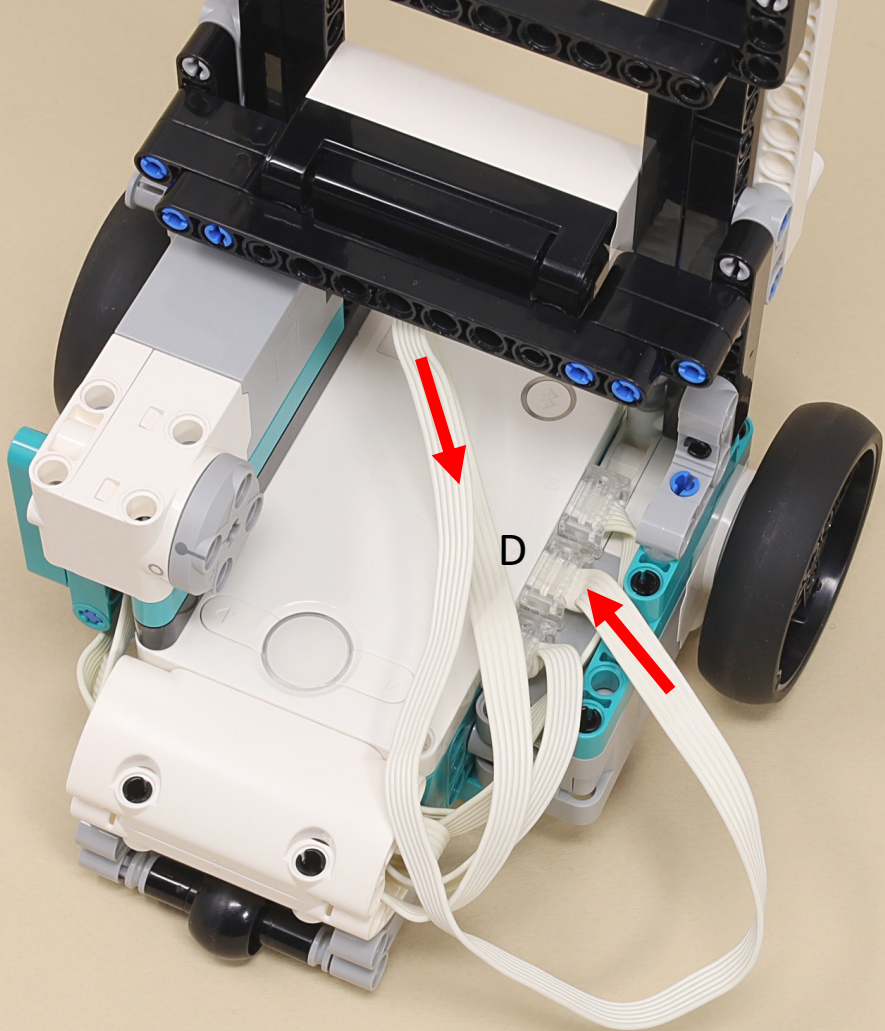




127N9

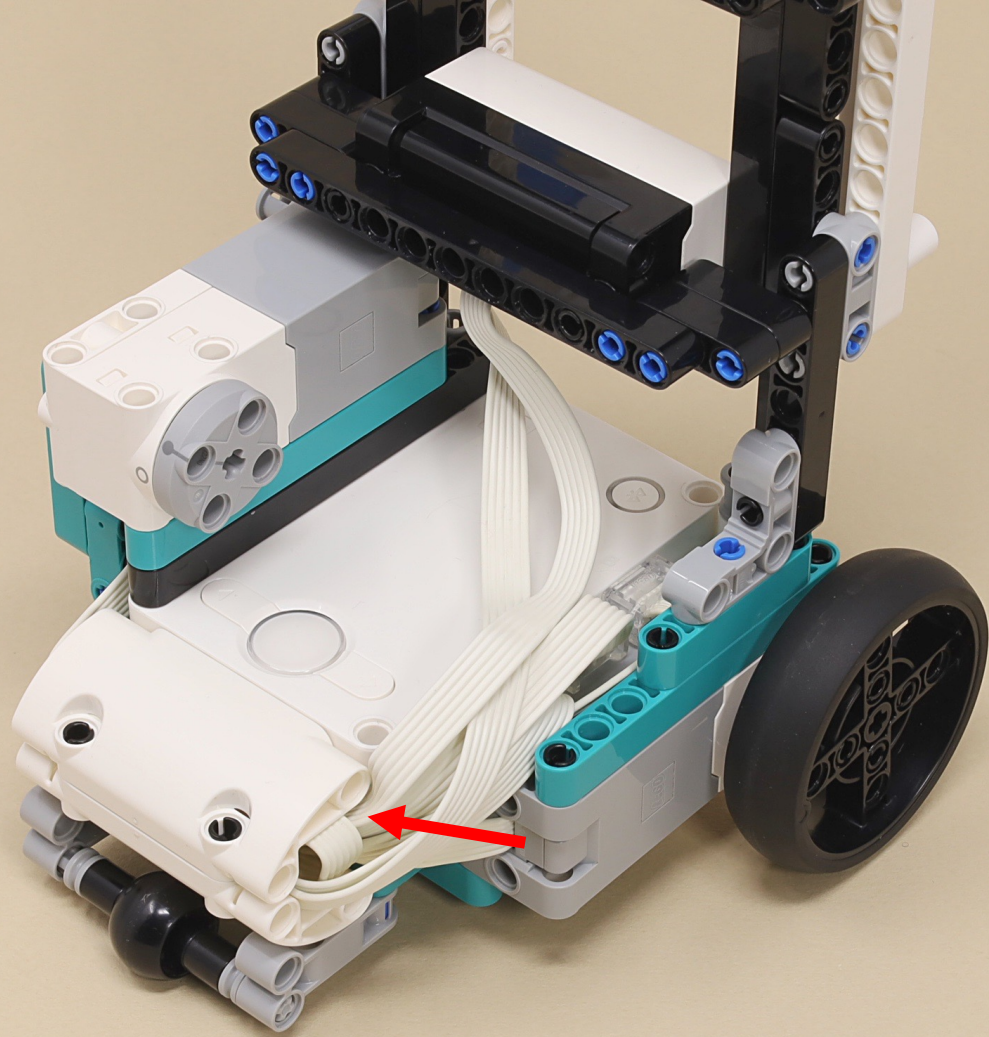
127N9

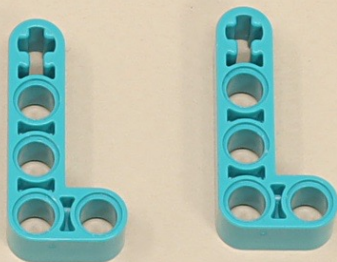
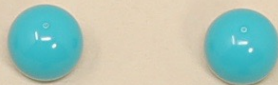
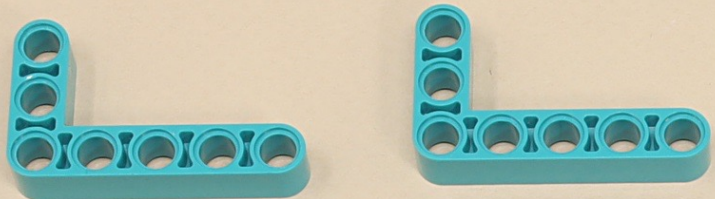




D = Distance Sensor

D



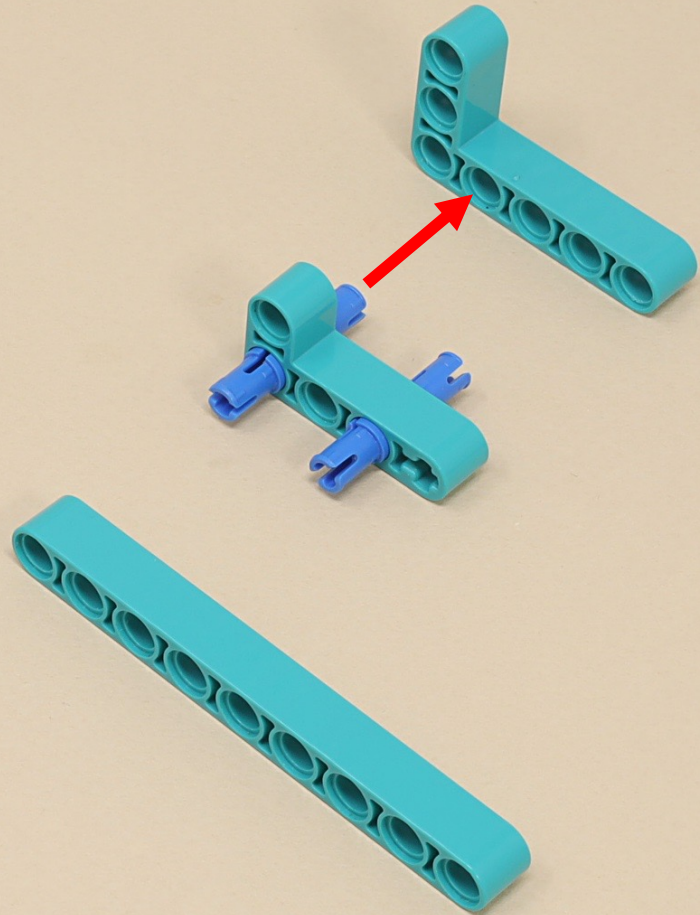
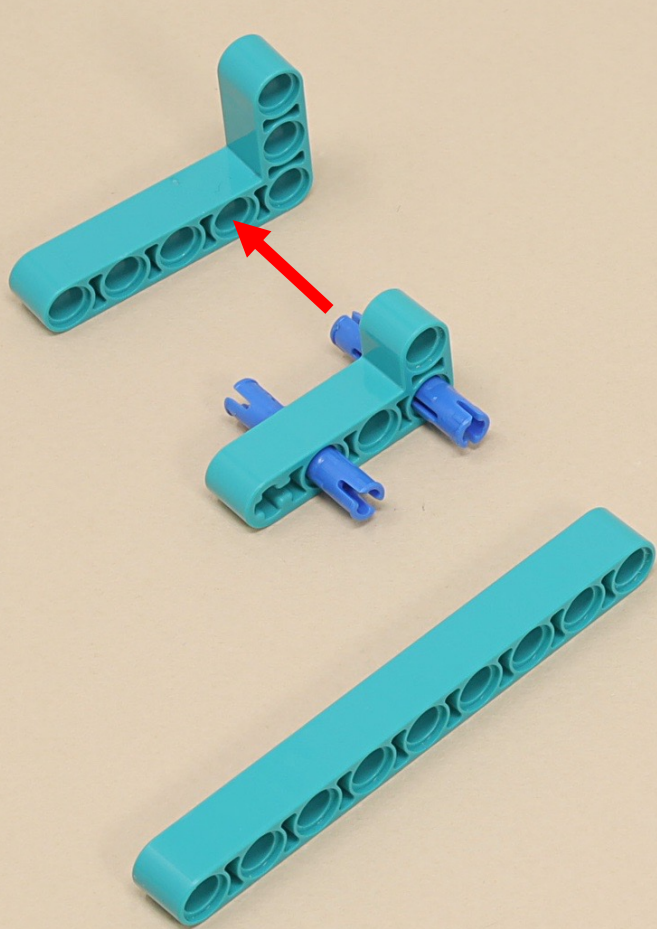


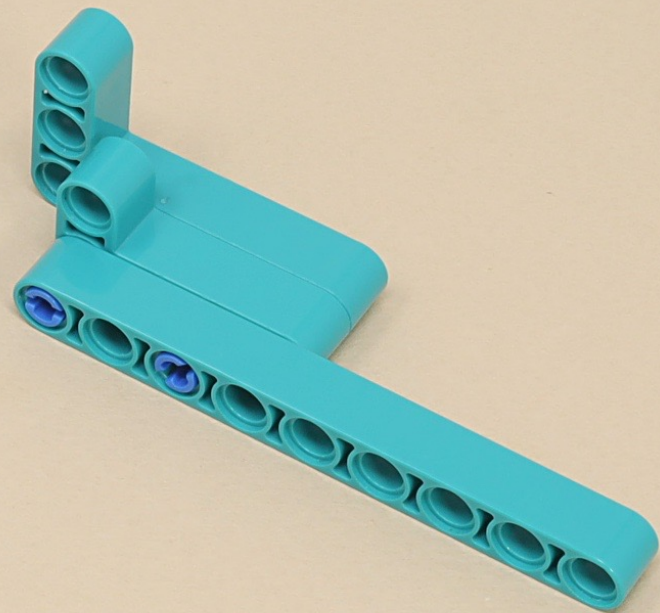
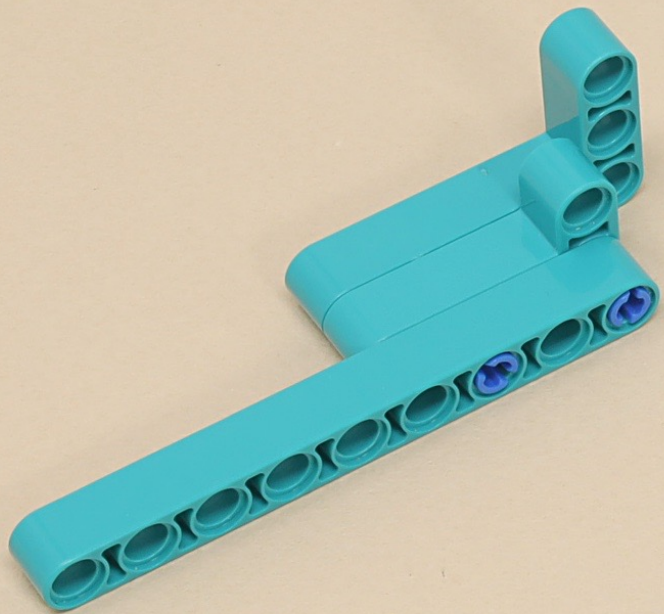
9



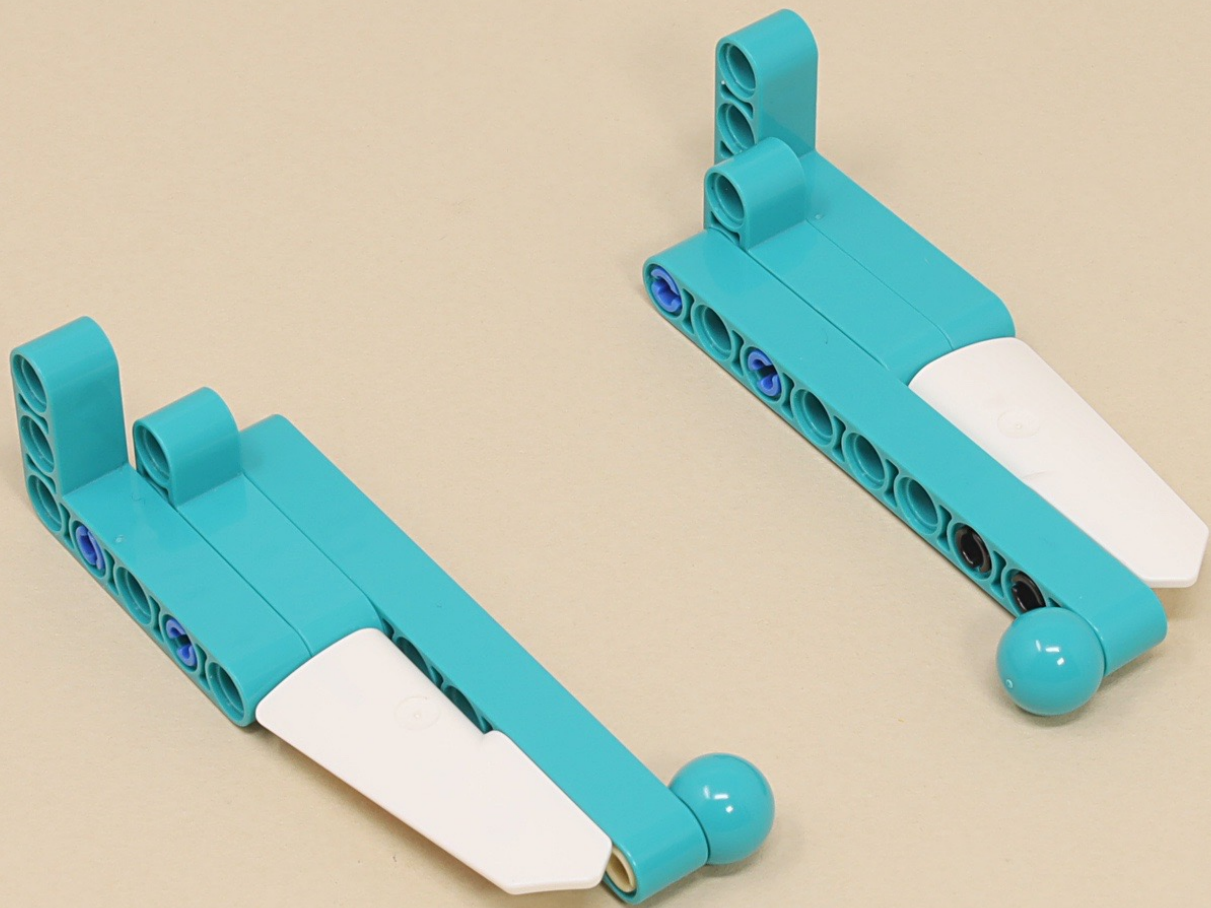
9













15



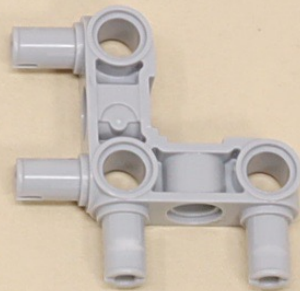
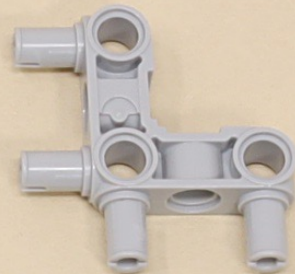
15

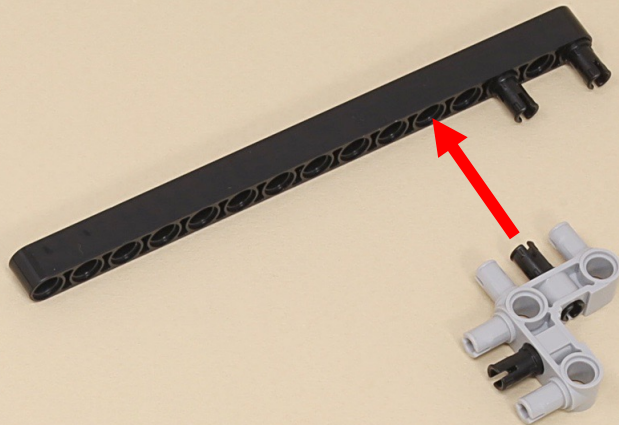
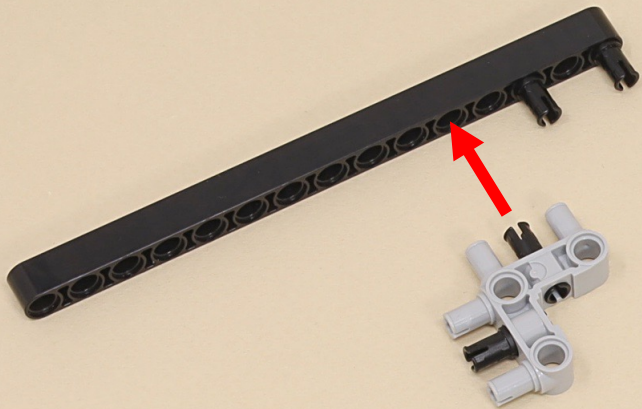


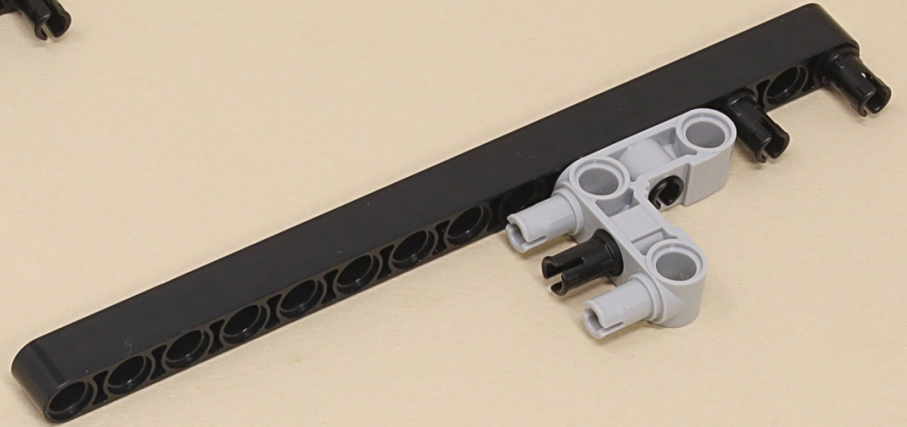
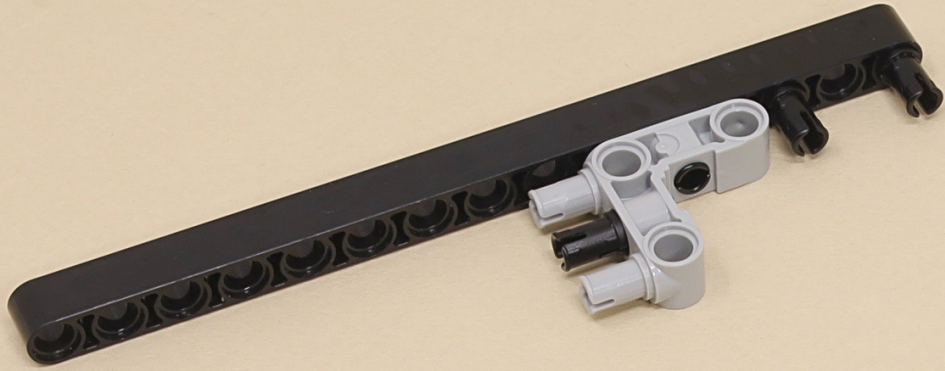
3

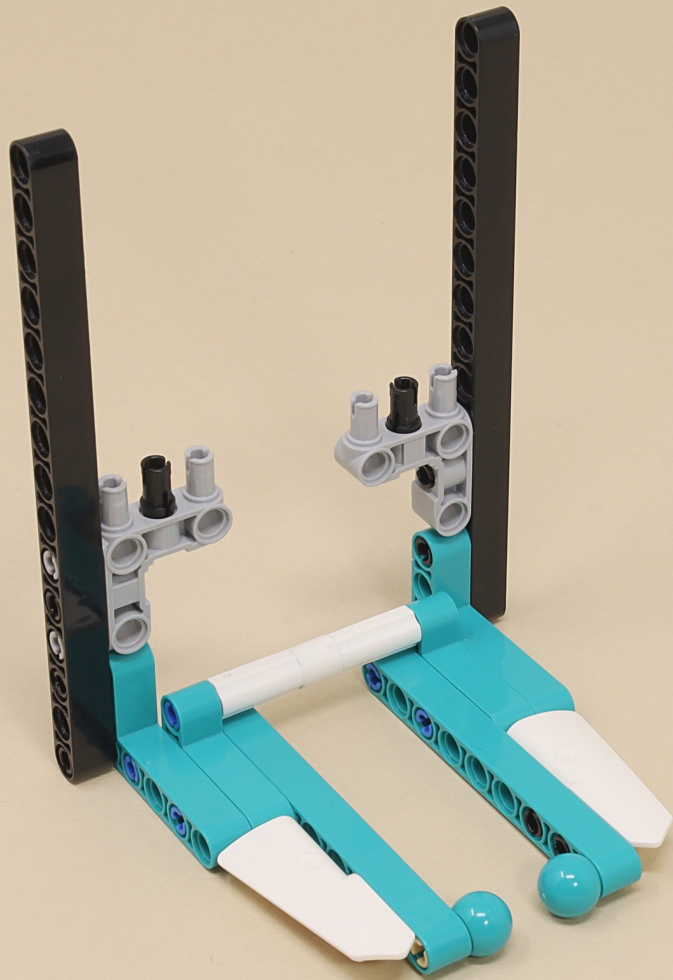


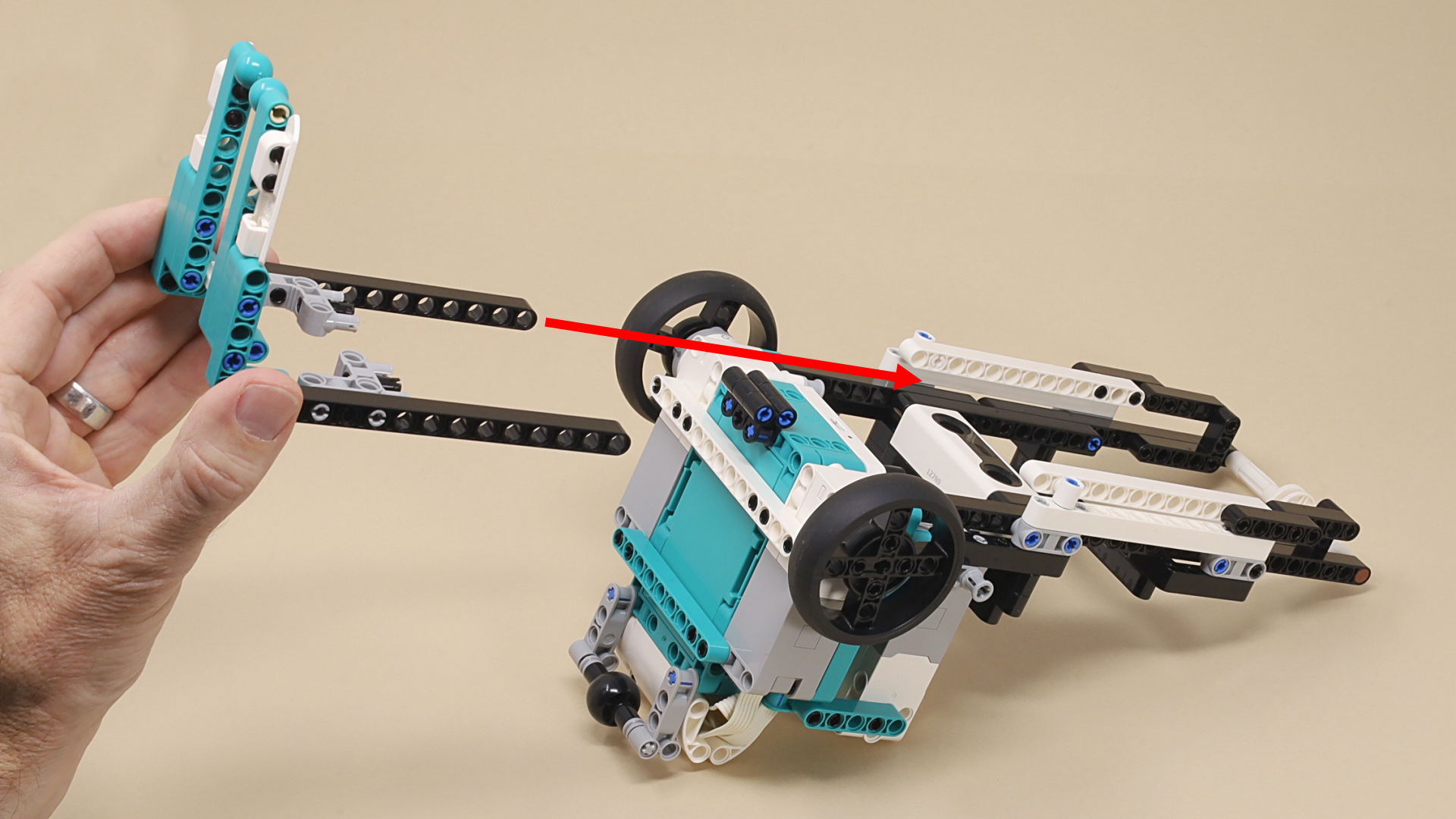
(8 x)

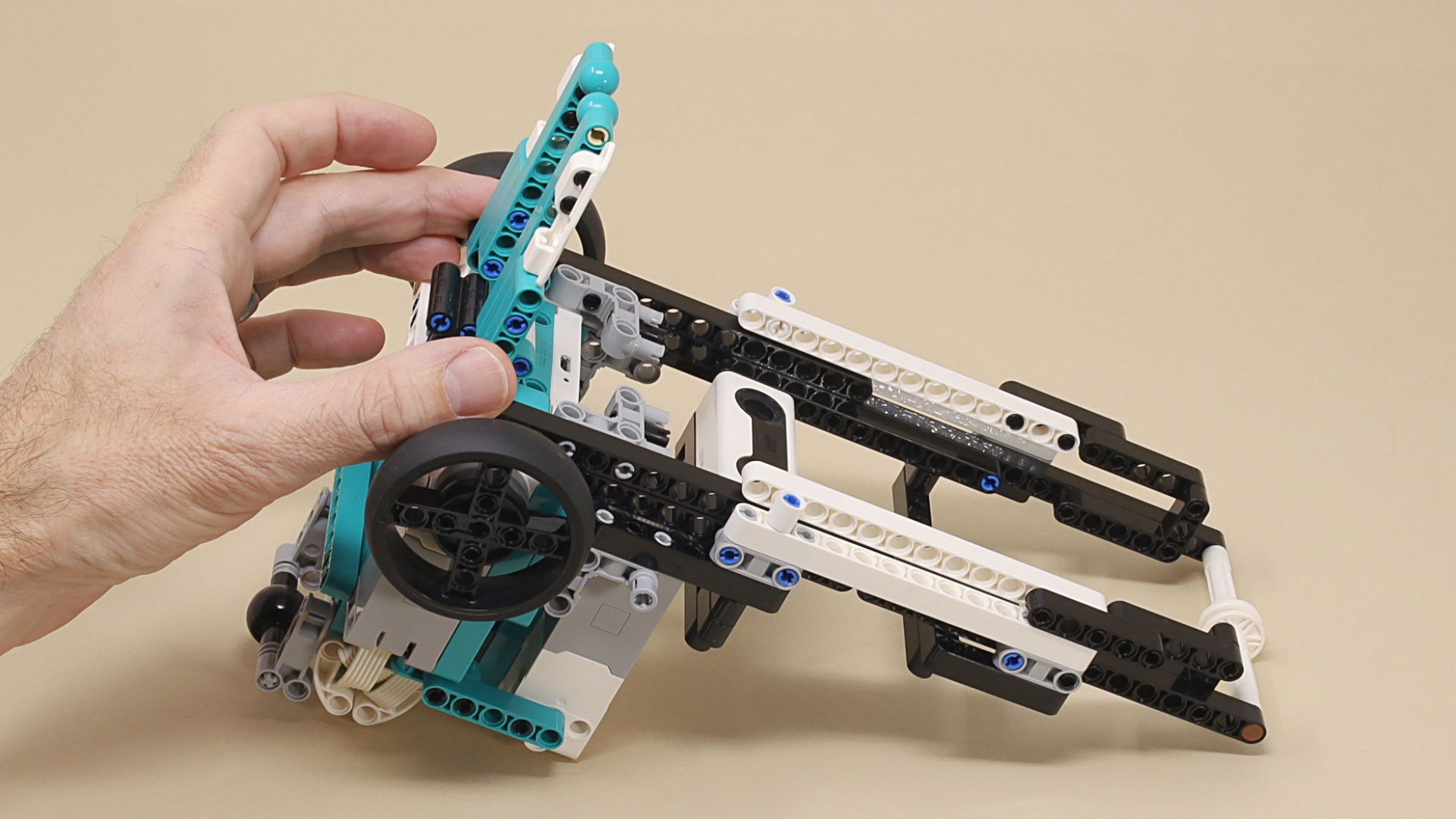


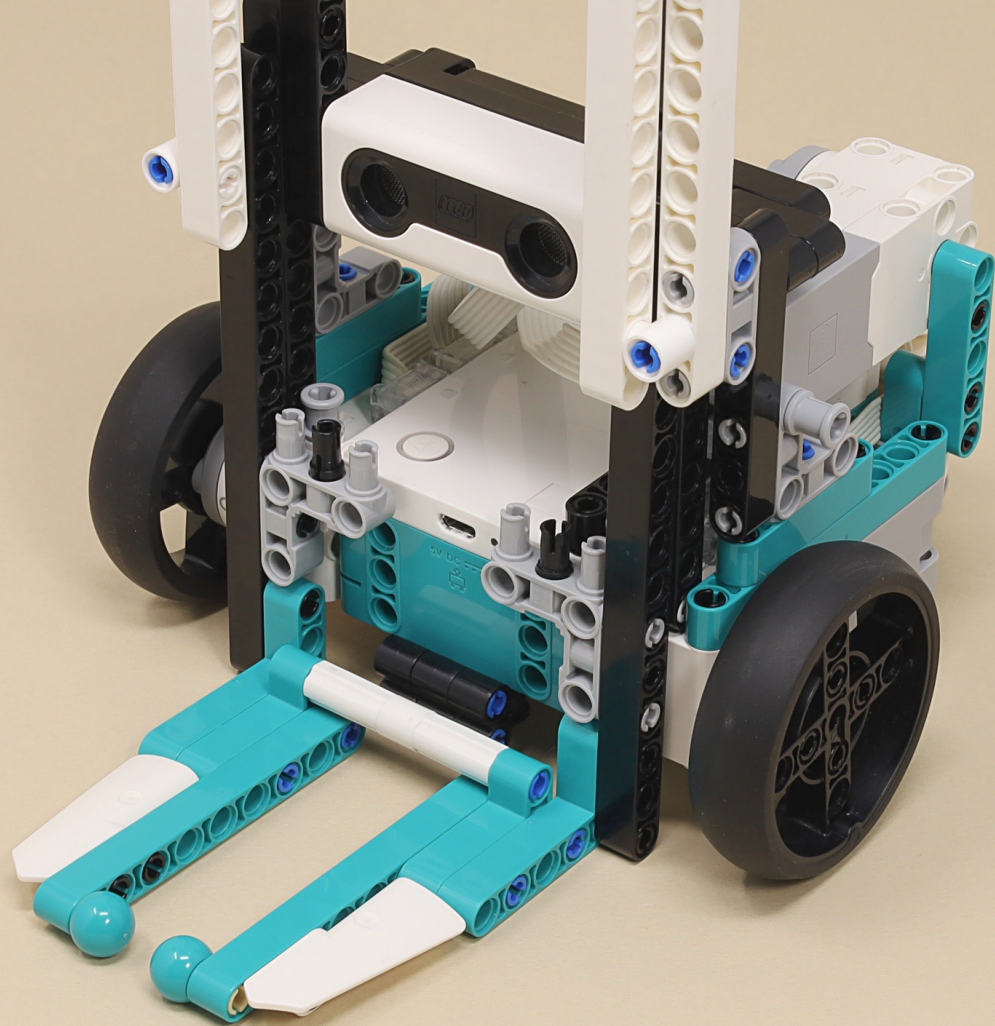














9



5



4



4



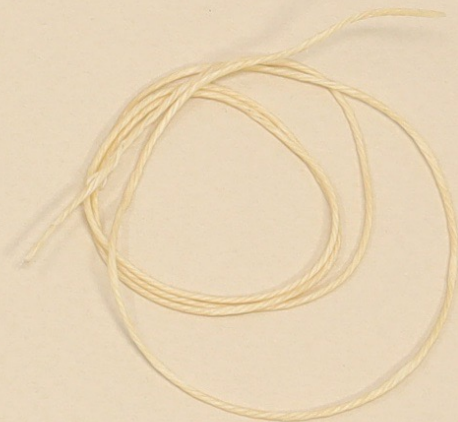
4

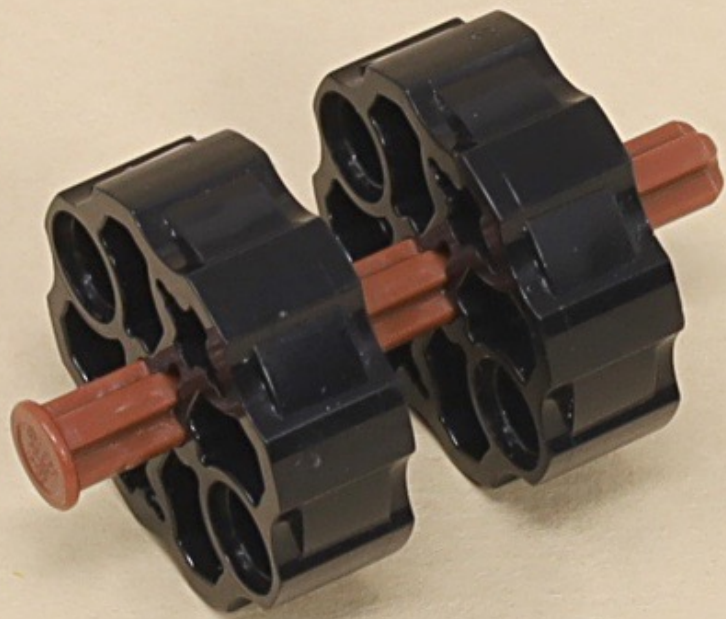


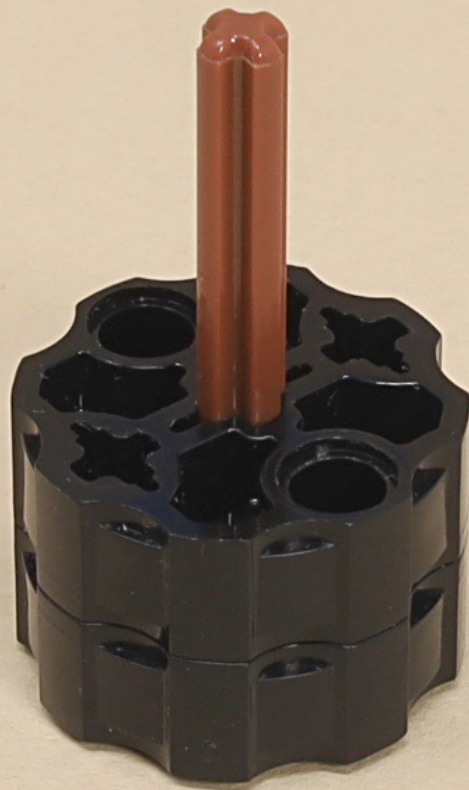
4

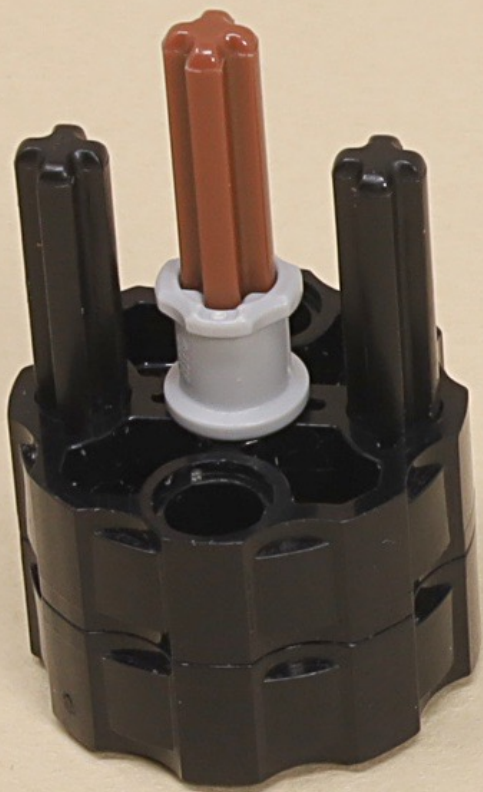


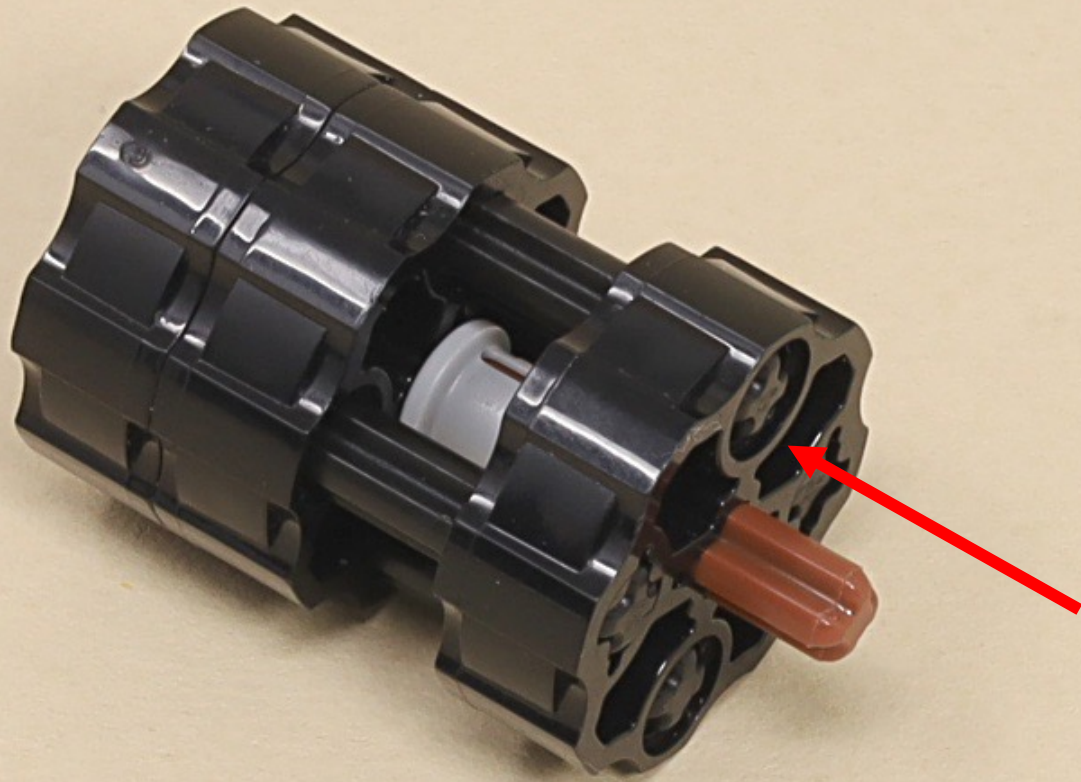
About **50 cm (20 inches)**
of any kind of thin string
(not in the LEGO kit)

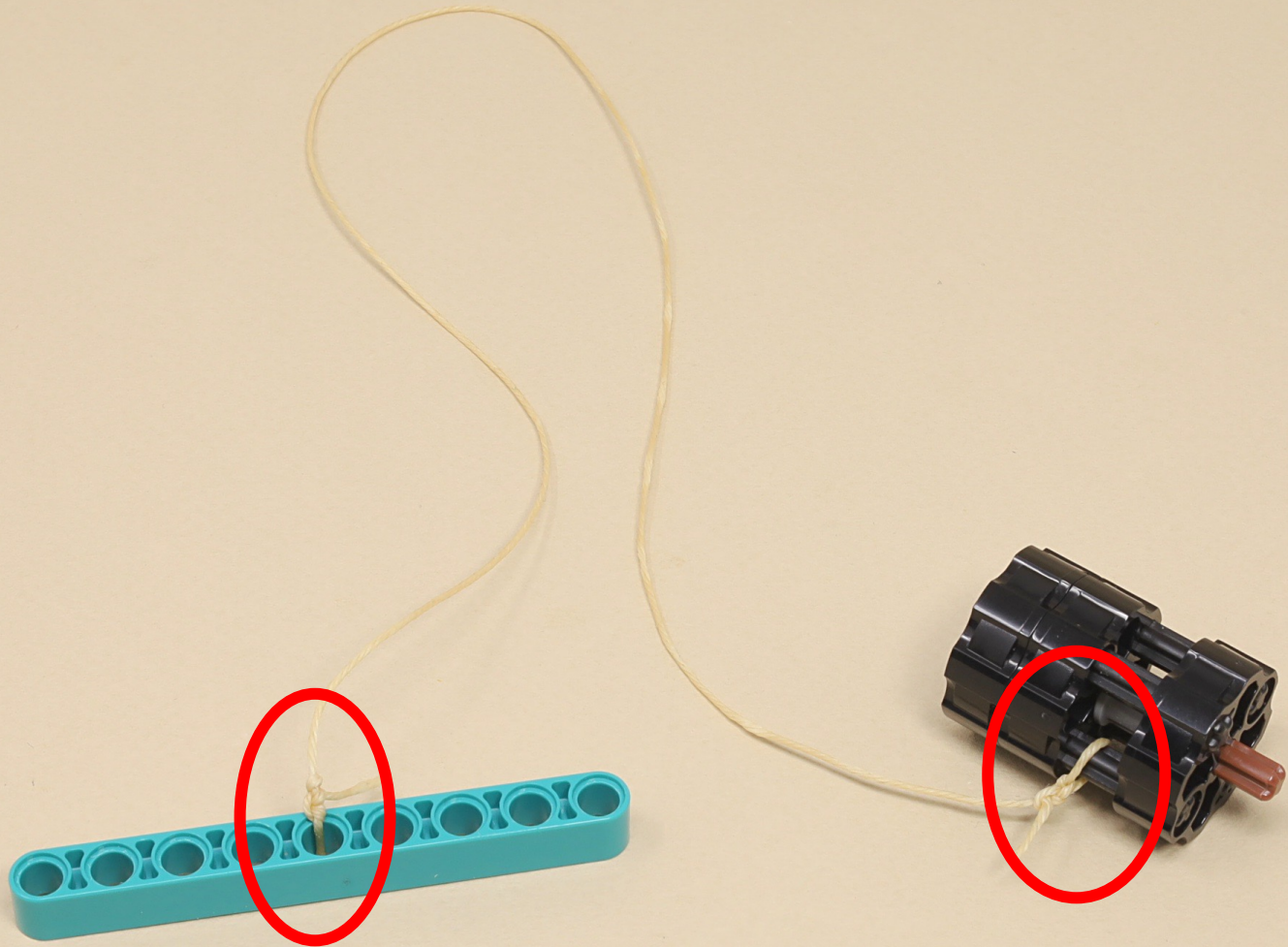


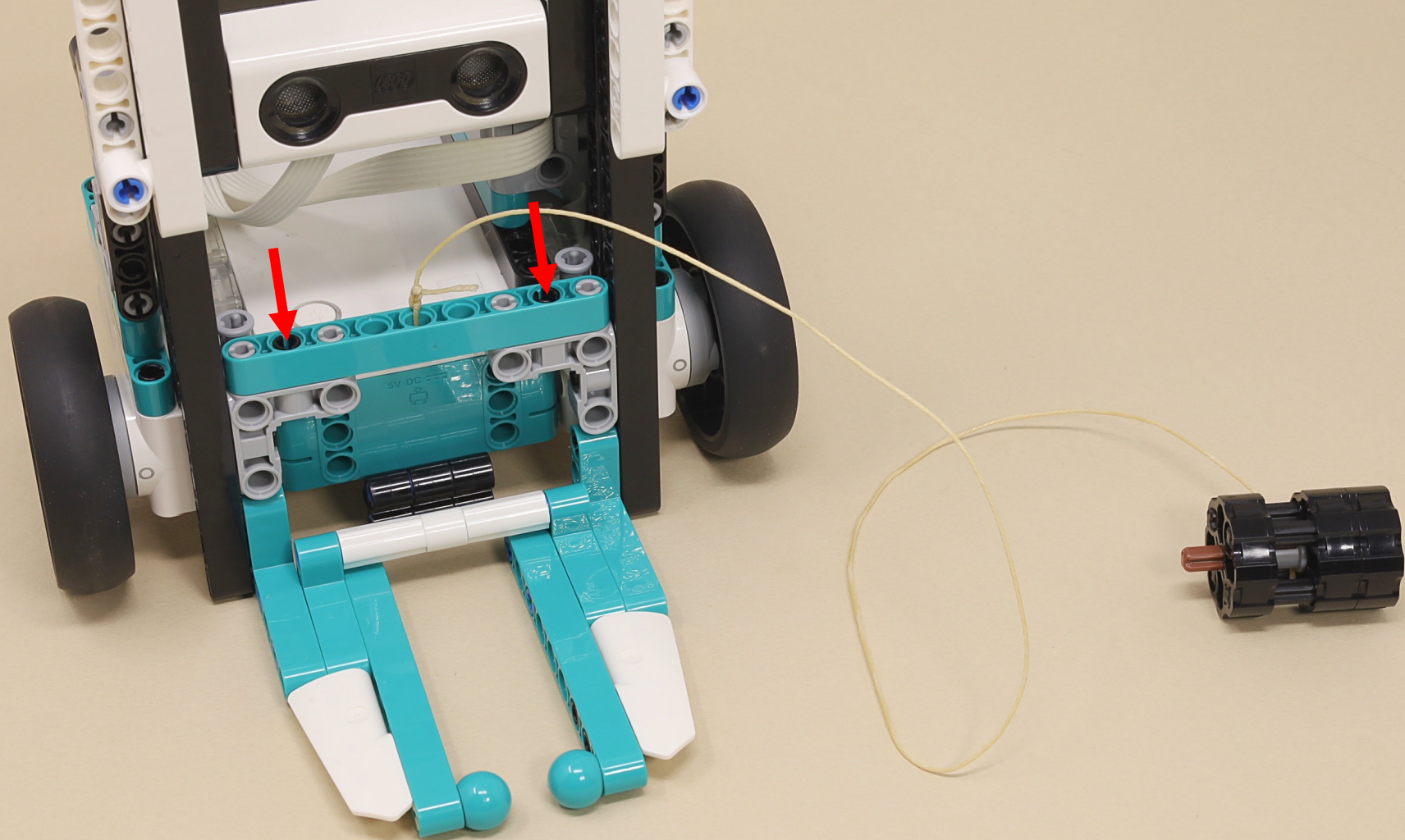


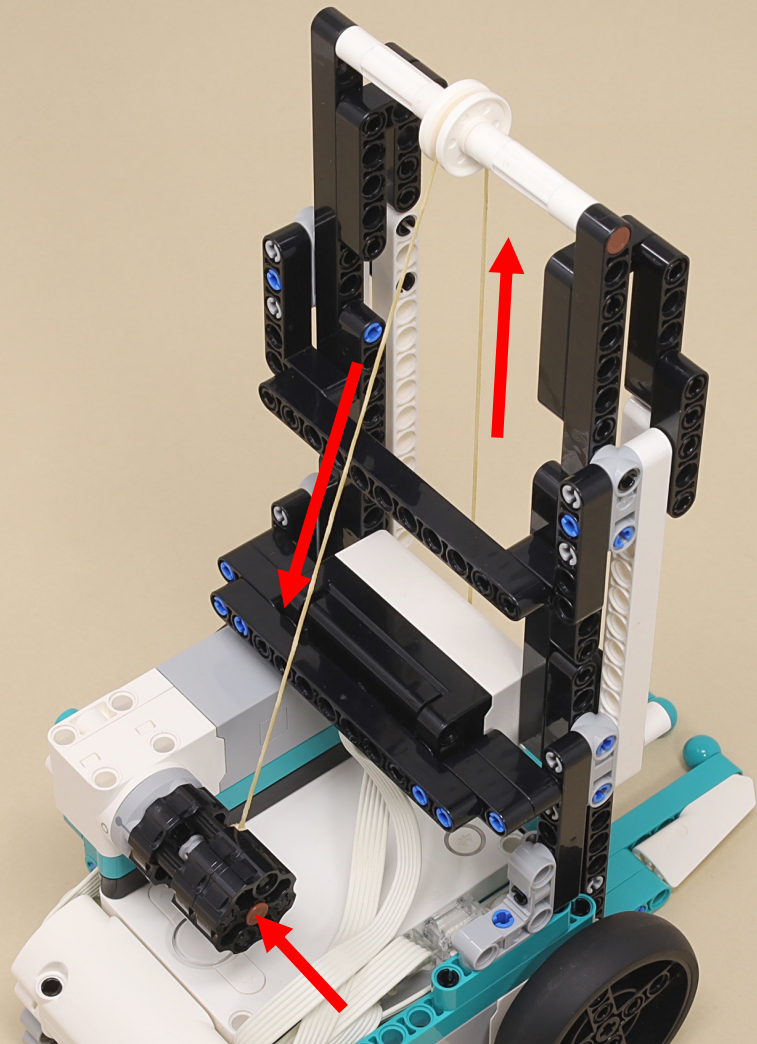












Twist the knob this direction until the slack in the string is taken up while the lift platform is still resting on the ground.

